

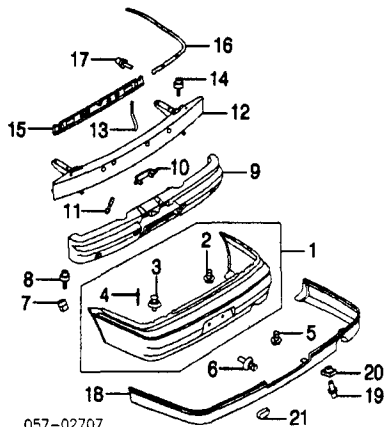
1 Lamp, Stop OZ Rally Model	MR522039	#.4	158.33
#Included in R&R Rear Air Spoiler Assy			
2 Screw, Mounting (2)	MU340036		.60

REAR BUMPER

Use Procedure Explanations 27 and 28 with the following text.

Refinish Rear Cover Assy.....	2.6
Refinish Rear Air Dam.....	1.2
R&I Bumper Assy.....	#1.3
O/H Bumper Assy (Includes R&I).....	#1.8
#Includes R&I/R&R Rear Combination Lamp Assemblies	
Add to R&R or O/H Bumper Assy	
w/Rear Air Dam.....	.2

NOTE: All Parts in this section are included in overhaul unless noted otherwise.



1 Cover Assy, Rear ES, LS Model			
White	MR972565	#1.5	296.92
Paint to Match	MR972565	#1.5	296.92
OZ Rally Model			
White	MR972553	#1.5	296.92
Paint to Match	MR972553	#1.5	296.92
#Includes R&I/R&R Rear Combination Lamp Assemblies			
2 Clip, Lwr Cover (3)	MU488006		.83
3 Clip, Up Cover (5)	MB253964		1.42
4 Rivet, Cover (18)	MR473000		.57
#Included w/Rear Cover Assy			
5 Bolt, Cover (4)	MF244822		.33
6 Clip, Cover (4)	MR138807		1.00
7 Grommet, Cover	R/L MR393386		1.10
8 Bolt, Cover	R/L MB612553		.97
9 Absorber, Impact	MR557670	IOH	93.02
10 Brkt, License Lamp	R/L MR598341		4.43
11 Brkt, Center Cover	R/L MR557671		1.15
12 Bar, Reinforcement	MR557669	1.8	225.00
13 Brkt, Cover Support	R/L MR598370		1.15
14 Bolt, Bar Mtg (4)	MS240129		.88
15 Reinf, Center Support	MS20343		39.52
16 Plate, Upper Bumper	R/L MR520346-5		19.37
17 Bolt, Center Reinf	R/L MS240141		.97
18 Dam, Rear Air			
OZ Rally Model			
White	MR635789	#1.5	371.61
Paint to Match	MR635789	#1.5	371.61
#Includes R&I Bumper Assy			
19 Bolt, Mtg (8)	MS240142		.70
20 Nut, Bolt (8)	MU440009		1.53
21 Clip (7)	MB325298		1.05

MITSUBISHI MIRAGE 1997-02

SECTION INDEX

A/C /Heater/Ventilation.....	133
A/C Refrigerant Capacities.....	133
ABS/Brakes.....	135
Air Bag System.....	135
Air Cleaner.....	138
Back Window.....	146
Center Console.....	141
Clear Coat Identification.....	131
Cooling.....	133
Cowl & Dash.....	140
Cruise Control System.....	136
Electrical.....	139
Emission System.....	139
Engine/Trans.....	138
Engine/Trans Mounts.....	138
Exhaust.....	139
Front Bumper.....	131
Front Door.....	143
Front Drive Axle.....	137
Front Fender.....	134
Front Inner Structure.....	135
Front Lamps.....	132
Front Seat.....	142
Front Steering Linkage/Gear.....	137
Front Suspension.....	136
Fuel Tank.....	148
Grille.....	132
Hood.....	133
Information Labels.....	131
Instrument Panel.....	140
Luggage Lid.....	147
Paint Code Location.....	131
Quarter Glass.....	147
Quarter Panel.....	146
Rear Body.....	148
Rear Bumper.....	149
Rear Door.....	145
Rear Lamps.....	149
Rear Seat.....	143
Rear Suspension.....	148
Rocker/Pillars/Floor.....	141
Roof.....	146
Seat Belts.....	143
Special Cautions.....	131
Steering Pump.....	137
Steering Wheel/Column.....	137
Sunroof.....	146
Underhood Dimensions.....	134
Wheel.....	136
Windshield.....	140

SPECIAL CAUTIONS

AIR BAG
Refer to Procedure Explanation 29 for Supplemental Restraint/
Air Bag Special Cautions.

PAINT CODE LOCATION

Paint code located on firewall.

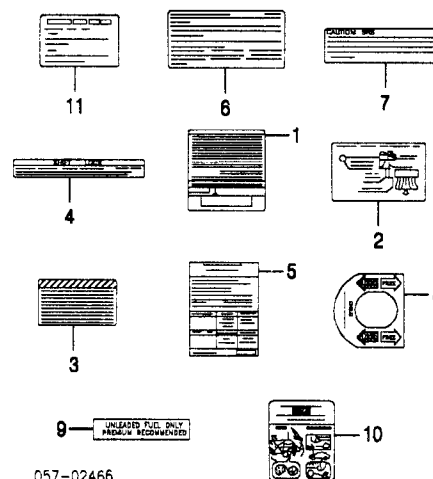
CLEAR COAT IDENTIFICATION

All metallic colors are clear coat.

INFORMATION LABELS

Illustration Located in Next Column

1 Label, Emissions			
1997-00			
Coupe			
DE, ES Model			
w/Calif Emissions	97	MD339883	2.92
	98	MD352566	3.77
	99	MD360470	3.77
	00	MD420894	0.00
w/o Calif Emissions	97	MD339882	2.92
	98	MD350629	2.88
	99	MD360469	3.88
	00	MD420894	0.00



057-02466

LS Model			
w/Calif Emissions	97	MD338132	2.92
	98	MD361781	3.77
	99	MD359735	3.77
	00	MD507136	0.00
w/o Calif Emissions	97	MD338131	2.92
	98	MD352591	3.77
	99-00	MD359734	3.77
Sedan			
DE, ES Model			
w/Calif Emissions	97	MD339883	2.92
	98	MD352566	3.77
	99	MD360470	3.77
	00	MD420894	0.00
w/o Calif Emissions	97	MD339882	2.92
	98	MD350629	2.88
	99	MD360469	3.88
	00	MD420894	0.00
LS Model			
w/Calif Emissions	97	MD338132	2.92
	98	MD361781	3.77
	99	MD359735	3.77
	00	MD507136	3.77
w/o Calif Emissions	97	MD338131	2.92
	98	MD352591	3.77
	99	MD359734	3.77
	00	MD507135	3.88
2001-02			
1.5L Eng		MR514184	4.20
1.8L Eng		MR561189	4.27
2 Label, Vacuum Service			
1.5L Eng	97	MD339885	2.85
	98	MD350631	2.82
	99-02	MD360471	3.88
1.8L Eng	97	MD339390	2.85
	98	MD350474	2.82
	99-02	MD359736	3.88
3 Label, A/C Refrigeration Caution		MR189236	1.32
4 Label, Auto Trans Shift Lock		MB580890	1.47
5 Label, Tire Pressure			
1997-00			
1.5L Eng		MB910333	1.17
1.8L Eng			
Coupe		MR130494	1.32
Sedan			
Man Window		MB910333	1.17
Pwr Window		MR130494	1.32
2001-01		MR491015	1.65
#Order by Application			
6 Label, Air Bag Caution	97-98	MB682048	1.18
	99-02	MR449370	1.52
7 Label, Air Bag Info		MB891604	3.47
Label, Passenger Air Bag		MR381707	.62
#Order by Application			
8 Label, Child Protection	R/L	MB421951-0	7.03
9 Label, Unleaded Fuel	00-02	MR560716	1.25
10 Label, Jack Caution		MR171814	2.18
11 Label, CD Player Theft		MB953761	3.17

FRONT BUMPER

Use Procedure Explanations 1 and 28 with the following text.

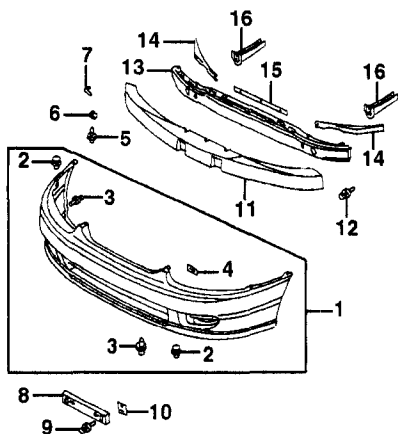
COUPE

Refinish Front Cover.....	2.0
R&I Bumper Assy.....	.8
O/H Bumper Assy (Includes R&I).....	1.6
Add to R&R or O/H Bumper Assy	
w/Fog Lamps.....	.3

NOTE: All Parts in this section are included in overhaul unless noted otherwise.

FRONT BUMPER Cont'd

COUPE Cont'd



057-01520

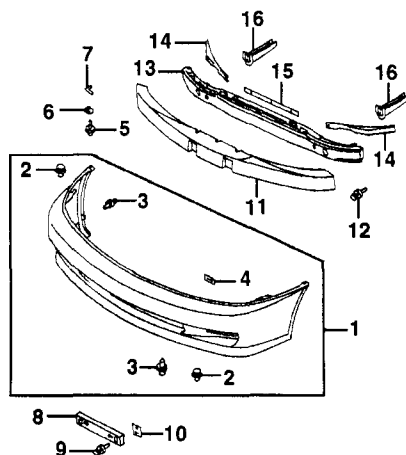
1 Cover Assy, Front (P) w/Fog Lamps	MR296317	1.4	201.67
w/o Fog Lamps	MR296316	1.4	201.67
(P) Paint to Match			
2 Clip (5)	MR200300		.98
3 Clip, Black (4)	MB253964		1.42
4 Clip, Fastener (1)			
1997			
To 9-2-96 (4)	R/L MR288200		1.05
From 9-3-96 (2)	R/L MB325298		1.05
1998-02	R/L MB325298		1.05
Included w/Front Cover Assy			
5 Screw	R/L MS452348		1.00
6 Nut, Blind	R/L MB481588		1.58
7 Pad, Cover	R/L MB575451		.95
8 Garnish, License Plate	MR184904	.3	10.03
9 Bolt, Garnish			
1997			
To 11-2-96	R/L MS240156		.33
From 11-3-96	R/L MS240044		1.32
1998-02	R/L MS240044		1.32
10 Bracket, Bolt	R/L MR311004		1.30
11 Absorber, Impact	MR184870	IOH	49.17
12 Bolt, Bumper (2/Side)	R/L MS240125		.95
13 Reinf, Bumper	MR184890	IOH	125.00
14 Plate, Upper Side	R/L MR264936-5		9.85
15 Plate, Center	MB867680		7.50
16 Bracket, Mounting	R/L MR184893	IOH	29.92

Cover, Fog Lamp Trim-See Front Lamps Section

SEDAN

Refinish Front Cover	2.0
R&I Bumper Assy	.8
O/H Bumper Assy (Includes R&I)	1.6

NOTE: All Parts in this section are included in overhaul unless noted otherwise.



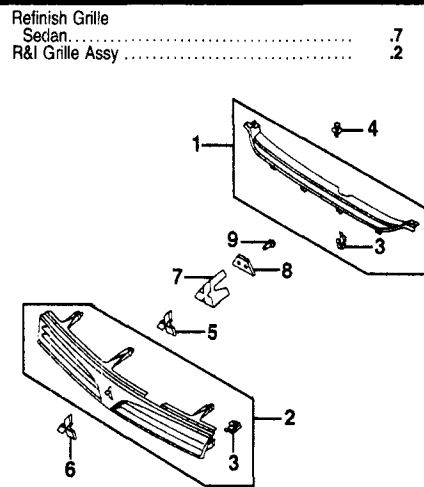
057-01521

1 Cover Assy, Front (P) (P) Paint to Match	MR296315	1.4	201.67
2 Clip (5)	MR200300		.98
3 Clip, Black (2/Side)	R/L MB253964		1.42
4 Clip, Fastener (1)			
1997			
To 9-2-96	R/L MR288200		1.05
From 9-3-96	R/L MB325298		1.05
1998-01	R/L MB325298		1.05

Included w/Front Cover Assy

5 Screw	R/L MS452348	1.00
6 Nut, Blind	R/L MB481588	1.58
7 Pad, Cover	R/L MB575451	.95
8 Garnish, License Plate	MR184903	.3
9 Bolt, Garnish		7.92
1997		
To 11-2-96	R/L MS240156	.33
From 11-3-96	R/L MS240044	1.32
1998-01	R/L MS240044	1.32
10 Bracket, Bolt	R/L MR311004	1.30
11 Absorber, Impact	MR184868	IOH
12 Bolt, Bumper (2/Side)	R/L MS240125	.95
13 Reinf, Bumper	MR184871	IOH
14 Plate, Upper Side	R/L MR264934-3	7.92
15 Plate, Center	MB867680	7.50
16 Bracket, Mounting	R/L MR184893	IOH
		29.92

GRILLE



057-01522

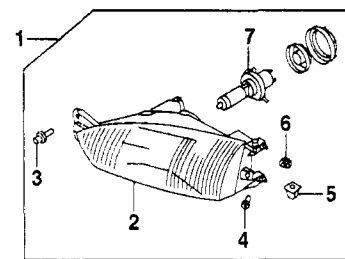
Grille Assy				
1	Coupe	MR273548	.3	53.93
2	Sedan (P)			
	w/Chrome	MR191519	.3	77.17
	w/o Chrome	MR748059	.3	77.17
	(P) Paint to Match			
3 Clip, Grille				
	Coupe (4)	MB153825		.97
	Sedan (6)	MB153825		.97
	Included w/Grille Assy			
4 Clip, Push-in				
	Coupe (2)	MB344737		1.32
Emblem				
5	Coupe	97-01 MB667160	#.2	14.78
		02 MB848718	#.2	17.18
6	Sedan	MR109421	#.2	14.78
	#Included in R&R Grille			
7 Base, Emblem				
	Coupe	MR245201		3.25
8 Bracket, Emblem				
	Coupe	MR245202		.97
9 Screw, Emblem Brkt				
	Coupe (2)	MF453017		.67

FRONT LAMPS

HEADLAMP COUPE

Aim Lamps	.4
R&I Headlamp Assy	R/L #.5
Includes R&I/R&R Park/Signal Lamp	

NOTE: R&R Does Not include aim lamps.



057-01523

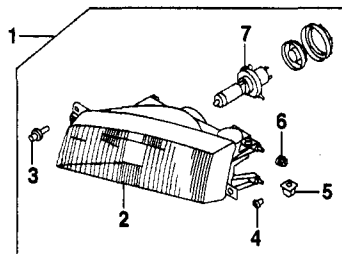
1 Headlamp Assy	R/L MR296308-7	#.5	181.67
2 Lens (1)	R/L MR322764-3	#.6	153.67
Includes R&I/R&R Park/Signal Lamp			
3 Fastener (1)	R/L MS240142		.70
4 Grommet (1)	R/L MR275391		1.15
5 Nut, Blind (1)	R/L MS480009		.98
6 Nut (1/2 Side)	R/L MB440133		.72
7 Bulb (1)	R/L MS820970	.2	23.92

Included w/Headlamp Assy

HEADLAMP SEDAN

Aim Lamps	.4
R&I Headlamp Assy	R/L #.7
Includes R&I Grille & R&I/R&R Park/Signal Lamp, R&I Both Sides 1.2	

NOTE: R&R Does Not include aim lamps.

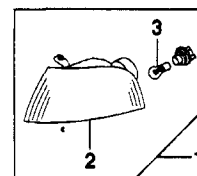


057-01524

1 Headlamp Assy	R/L MR476690-89	#.7	225.67
Includes R&I Grille & R&I/R&R Park/Signal Lamp, R&R Both Sides 1.2			
2 Lens (1)	R/L MR472730-29	#.8	166.18
Includes R&I Grille & R&I/R&R Park/Signal Lamp, R&R Both Sides 1.4			
3 Fastener (2/Side)	R/L MS240602		.72
4 Grommet (1)	R/L MR275295		1.15
5 Nut, Blind (1)	R/L MS480009		.98
6 Nut (1/2 Side)	R/L MS440133		.72
7 Bulb (1)	R/L MS820970	.2	23.92
Included w/Headlamp Assy			

PARK/SIGNAL LAMP

R&I Park/Signal Lamp Assy	R/L	.2
---------------------------	-----	----

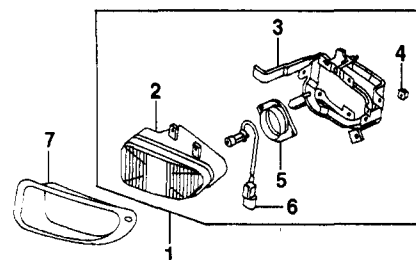


057-01525

1 Lamp Assy, Park/Signal			
Coupe	R/L MR296304-3	.2	44.12
Sedan	R/L MR296306-5	.2	44.12
2 Lens (1)			
Coupe	R/L MR322640-39	.2	44.02
Sedan	R/L MR322642-1	.2	47.63
3 Bulb (1)			
Coupe	R/L MS820037	#.2	5.75
Sedan	R/L AL001157	#.2	.50
Included w/Park/Signal Lamp Assy			
Included in R&R Lamp Assy or Lens			

FOG LAMP

R&I Fog Lamp Assy	R/L	.2
-------------------	-----	----



057-01526

1 Lamp Assy, Fog	R/L MR296312-1	#.2	196.83
2 Lens (1)	R/L MR300340-39	#.2	146.82
Included in R&R or O/H Front Cover			
3 Bracket, Mounting (1)	R/L MR155264-3		33.33
4 Nut, Blind (1)	R/L MB133141		.71
5 O-Ring (1)	R/L MB622624		.78
6 Bulb (1)	R/L MS820964		27.23
Included w/Fog Lamp Assy			
7 Cover, Fog Lamp Trim			
Black (Code X08)	97-00 R/L MR273526-5	#.2	15.78
	01-02 R/L MR586988-7	#.2	26.43
Blue			
Code T73	97-98 R/L MR273538-7	#.2	15.78
Code T38	99-02 R/L MR376994	#.2	17.55
	L MR376993	#.2	17.03
Code T10	02 R/L MR981322-1	#.2	21.82
Brown (Code C86)	99-00 R/L MR439562	#.2	17.55
	L MR439561	#.2	17.03

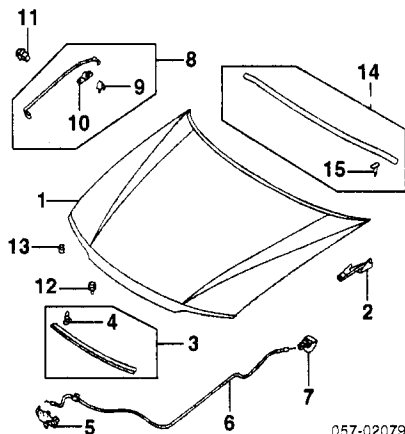
Gold (Code K86)	97-98 R/L	MR296314-3	#.2	15.78
Green Metallic				
Code F89	R/L	MR273532-1	#.2	15.78
Code F26	R/L	MR972440-39	#.2	21.82
Green Pearl				
Code G84	97 R/L	MR273530-29	#.2	15.78
Code G13	98-01 R/L	MR376046-5	#.2	15.57
Red				
Code P85	R/L	MR273528-7	#.2	15.78
Code P78	R/L	MR273542-1	#.2	15.57
Code R20	R/L	MR586990-89	#.2	26.43
Silver (Code A69)	98-01 R/L	MR273524-3	#.2	15.97
White				
Code W83	R/L	MR241376-5	#.2	15.78
Code W13	R/L	MR586992-1	#.2	26.43

#Included in R&R Lamp Assy or Lens

HOOD

Use Procedure Explanations 4 and 28 with the following text.

Refinish Hood Outside	2.5
Add for Underside	1.3
Refinish Hinge	R/L .3
R&I Hood Assy	.4



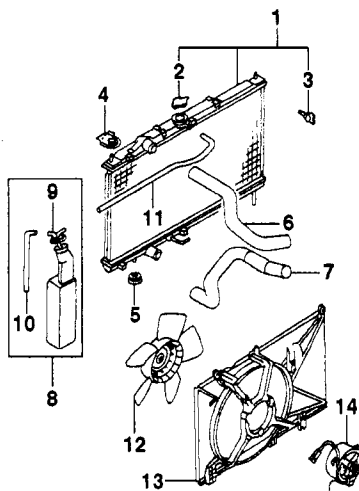
1 Panel, Hood			
Coupe	MR208868	.8	291.67
Sedan	MR208867	.8	291.67
2 Hinge	R/L MB866526-5	#.2	22.30
#w/Hood Removed			
3 W/Strip Assy, Hood Front	MR286902	.2	5.75
4 Clip, Front W/Strip (a)	MU481027		1.22
#Included w/Hood Front W/Strip Assy			
(a) As Required			
5 Latch	MR280776	.3	15.58
6 Cable, Release	MR185813	#.8	11.15
7 Handle, Release			
Black	MR734393	#.8	6.75
Gray	MR732127	#.8	6.75
#R&R Complete			
8 Rod Assy, Support	MR186309	.2	9.20
9 Bushing, Support Rod (a)	MB830953		.55
10 Plate, Support Rod (a)			
1997			
To 8-96	MB401457		.88
From 9-96	MR349476		.88
1998-02	MR349476		.88
#Included w/Support Rod Assy			
11 Clip, Support Rod	MB889049		.97
12 Damper, Center Hood	R/L MR288769	.1	.55
13 Damper, Outer Hood	97-98 R/L MB270408	.1	2.52
	99-02 R/L MR473471	.1	2.52
14 W/Strip Assy, Rear Hood	MR280225	.2	7.27
15 Clip, Rear W/Strip (a)	MU481027		1.22
#Included w/Rear Hood W/Strip Assy			
(a) Use as Required			

COOLING

Use Procedure Explanations 5 and 28 with the following text.

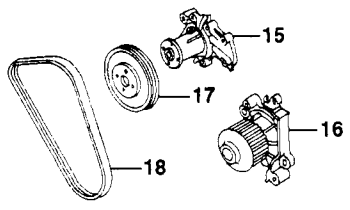
Illustration Located in Next Column

1 Radiator Assy			
1.5L Eng			
Man Trans	MR299619	.8	397.17
Auto Trans	MR299619	1.0	397.17
1.8L Eng			
Man Trans	MR299618	.8	397.17
Auto Trans	MR187964	1.0	397.17
2 Cap, Radiator (a)	MR481216		11.98
3 Plug, Radiator (a)	MB597892		3.15
#Included w/Radiator Assy			
4 Insulator, Upper			
Coupe	R/L MR204569	5.55	
Sedan	R/L MR204721	5.55	
5 Insulator, Lower			
Man Trans	R/L MR299095	1.97	
Auto Trans	R/L MR204333	2.18	



057-01528

6 Hose, Upper Rad			
1.5L Eng	MR204562	#.5	11.12
1.8L Eng	MR204376	#.5	11.98
7 Hose, Lower Rad			
1.5L Eng			
Man Trans	MR204553	#1.1	11.98
Auto Trans	MR497677	#1.1	16.87
1.8L Eng			
Man Trans	MR127883	#1.1	11.98
Auto Trans			
1997			
To 5-2-96	MR258832	#1.1	11.98
From 5-3-96	MR340026	#1.1	11.98
1998-02	MR340026	#1.1	11.98
#R&R Both Upper & Lower 1.4			
8 Tank Assy, Coolant	MR188696	.5	20.95
9 Cap, Coolant Tank (a)	MR241350		3.96
10 Hose, Tank Overflow (a)	MS610718		40.83
#Included w/Coolant Tank Assy			
11 Hose, Rad Overflow (a)	MS600623		10.67
(a) Cut to Fit			
12 Fan, Cooling			
1.5L Eng	MB845072	#.8	24.77
1.8L Eng			
Man Trans	MB845072	#.8	24.77
Auto Trans	MB906062	#.8	38.45
13 Shroud, Fan			
1.5L Eng	MR188151	#.8	51.62
1.8L Eng			
Man Trans	MR188151	#.8	51.62
Auto Trans	MR188152	#.8	51.62
14 Motor, Fan			
1.5L Eng	MR188156	#.8	146.18
1.8L Eng			
Man Trans	MR188156	#.8	146.18
Auto Trans	MR187908	#.8	146.18
#R&R Complete, w/Radiator Removed Deduct .5			



057-01989

15 Pump, Water			
1.5L Eng	MD323372	m #3.2	104.38
16 Pump, Water			
1.8L Eng	MD309756	m #4.3	104.38
#w/ A/C Add .3, w/Pwr Strg Add .2			
17 Pulley, Water Pump (a)			
1.5L Eng	MD320154		33.70
#1.8L Eng-Serviced w/Water Pump			
18 Belt, Drive			
1.5L Eng	MD338513	#.5	16.05
1.8L Eng	MD312400	#.5	16.05
#w/ A/C Add .1, w/Pwr Strg Add .1			

19 Outlet, Thermostat			
1.5L Eng	MD327252	#.6	19.60
1.8L Eng			
Man Trans	MD314597	#.6	19.60
Auto Trans	MD314596	#.6	19.60
20 Thermostat	MD337408	#.6	16.05
#R&R Complete, Included in R&R Thermostat Housing			
21 Housing, Thermostat			
1.5L Eng	MD337036	.8	53.28
1.8L Eng	MD315628	.8	48.20
22 Pipe, Water Inlet			
1.5L Eng	MD331640	1.0	25.90
1.8L Eng	MD343422	1.0	53.92
23 Hose, Throttle Body Return			
1.5L Eng	MD319013	.4	8.80
1.8L Eng	MD316247	.4	11.57
24 Hose, Throttle Body Feed			
1.5L Eng	MD319012	.4	7.57
1.8L Eng	MD331160	.4	3.37

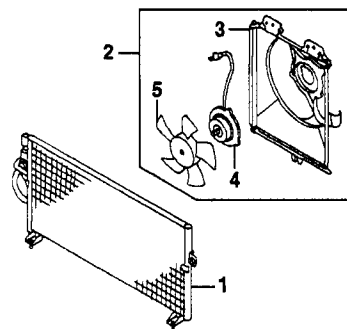
A/C REFRIGERANT CAPACITIES

A/C R-134a Refrigerant Capacity
1997-02: 24 Ozs (1.5 Lbs)

A/C /HEATER/VENTILATION

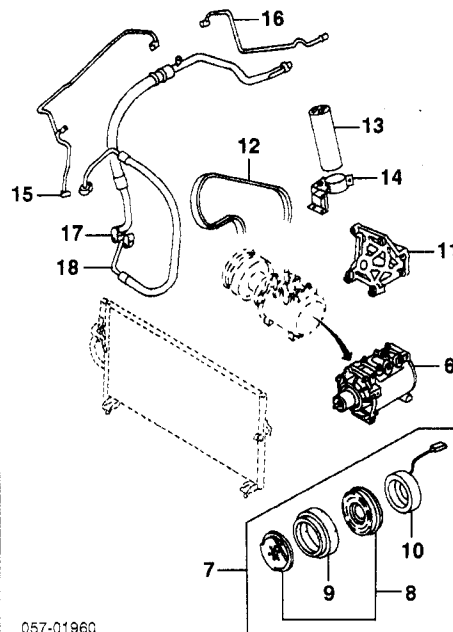
Use Procedure Explanation 6 with the following text.

Evacuate & Recharge System	m 1.4
Refrigerant Recovery	m .3



057-01629

1 Condenser			
Dealer Installed (a)	MR218428	m #1.1	282.93
Factory Installed	MR360276	m #1.1	344.23
#Order by Application			
#w/Radiator Removed Deduct .8			
2 Fan Assy	97-98 MR201374	#.5	252.77
	99-02 MR460922	#.5	252.77
#Included in R&R Condenser			
3 Shroud, Fan (a)	97-00 MR283281	#.8	89.77
	01-02 MR513229	#.8	41.72
4 Motor, Fan (a)	MR315271	#.8	175.00
5 Blade, Fan (a)	MB877089	#.8	221.92
#Included w/Fan Assy			
#R&R Complete			



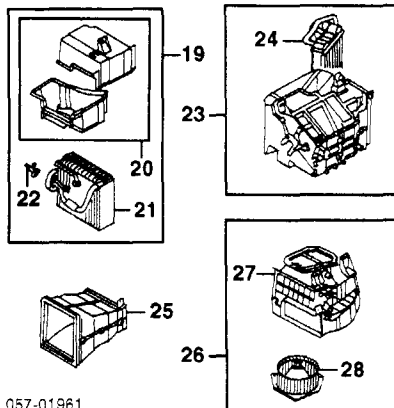
057-01960

MITSUBISHI MIRAGE 1997-02

A/C /HEATER/VENTILATION Cont'd

6 Compressor				
1.5L Eng	97	MR315268	m #1.7	692.83
	98	MR315784	m #1.7	680.17
	99	MR460057	m #1.7	790.31
	00-02	MR500253	m #1.7	762.58
1.8L Eng	97	MR315268	m #1.7	692.83
	98-99	MR315784	m #1.7	680.17
	00-02	MR500250	m #1.7	790.31
7 Clutch Assy, Compressor				
1.5L Eng	1997	MR360257	m #1.7	231.70
	1998-99	MR398108	m #1.7	246.90
	2000-02	MR500258	m #1.7	231.70
1.8L Eng	1997	MR270704	m #1.7	231.70
	To 5-96	MR315817	m #1.7	257.33
	From 6-96	MR398109	m #1.7	257.33
	1998-99	MR398109	m #1.7	257.33
	2000-02	MR500259	m #1.7	257.33
#R&R Complete				
8 Rotor & Clutch, Compressor				
1.5L Eng	97	MR360242	m #.4	329.03
	98-99	MR315787	m #.4	131.77
	00-02	MR460108	m #.4	104.08
1.8L Eng	97	MR360242	m #.4	329.03
	98-99	MR398110	m #.4	131.77
	00-02	MR500236	m #.4	141.37
9 Pulley, Compressor (a)				
1.5L Eng	1997	MR168204	m #.4	0.00
1.8L Eng		MR201698	m #.4	86.25
(a) 1998-02-Serviced w/Compressor Clutch Assy				
10 Coil, Compressor				
1.5L Eng	97	MR398908	m #.5	98.37
	98-99	MR398101	m #.5	96.65
	00-02	MR500244	m #.5	79.53
1.8L Eng	97	MR398908	m #.5	98.37
	98-99	MR398101	m #.5	96.65
	00-02	MR500244	m #.5	79.53
#Included w/Compressor Clutch Assy				
#Included in R&R Compressor				
11 Bracket, Mounting				
1.5L Eng	97	MR201200	#.2	56.23
	98-02	MR360566	#.2	73.38
1.8L Eng	97	MR240920	#.2	47.10
	98-02	MR360567	#.2	65.38
#w/Compressor Removed				
12 Belt, Drive				
1.5L Eng	97	MD325601	#.5	19.92
	98-99	MD339525	#.5	35.40
	00-02	MD325599	#.5	21.05
1.8L Eng	97-99	MD331884	#.5	36.63
	00-02	MD319917	#.5	21.05
#w/Pwr Strg Add .1				
13 Receiver/Drier				
14 Brkt, Receiver/Drier	MR2017457	m	.8	104.77
	MR201377	m	#.1	8.60
#w/Receiver/Drier Removed				
15 Pipe, Condenser				
16 Pipe, Evaporator	MR201388	m	.6	44.03
17 Hose, Suction	MR201440	m		28.27
1.5L Eng	97	MR201833	m #1.0	113.15
	98	MR360629	m #1.0	133.18
	99-02	MR360574	m #1.0	114.53
1.8L Eng		MR360576	m #1.0	130.05
Dealer Installed	97	MR201840	m #1.0	115.23
Factory Installed	98	MR360631	m #1.0	131.47
	99-02	MR360576	m #1.0	130.05
18 Hose, Discharge				
1.5L Eng	1997	MR206834	m #1.0	94.18
	1998-02	MR360628	m #1.0	110.02
1.8L Eng		MR360571	m #1.0	93.42
Dealer Installed	1997	MR201380	m #1.0	110.02
Factory Installed	1998-02	MR360630	m #1.0	114.80

#Order by Application
#Each Additional .5



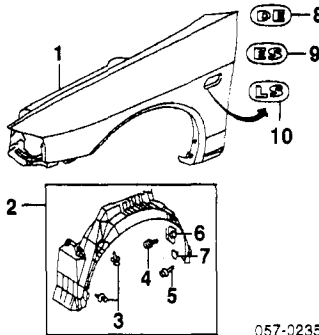
057-01961

19 Evaporator Assy				
Dealer Installed				
1997				
To 10-96		MR283260	m 2.8	369.15
From 11-96		MR315745	m 2.8	462.63
1998-02		MR315745	m 2.8	462.63
Factory Installed		MR315745	m 2.8	462.63
20 Case, Evaporator		MB939447	m #3.0	88.00
21 Core, Evaporator				
Dealer Installed				
1997				
To 10-96		MR168194	m #3.0	303.27
From 11-96		MR360015	m #3.0	413.97
1998-02		MR360015	m #3.0	413.97
Factory Installed		MR360015	m #3.0	413.97
#R&R Complete, Includes R&R Expansion Valve				
22 Valve, Expansion				
Dealer Installed				
1997				
To 10-96		MR168050	m 2.1	124.25
From 11-96		MR250697	m 2.1	0.00
1998-02		MR250697	m 2.1	0.00
Factory Installed		MR250697	m 2.1	0.00
#Included w/Evaporator Assy				
23 Heater Assy				
		MR360883	m #5.5	293.97
24 Core, Heater				
	97	MR308005	m #6.2	193.62
	98-02	MR270016	m #6.2	225.27
#Included w/Heater Assy				
#w/ A/C Add .2, Includes R&I Instrument Panel				
25 Duct, Air Intake				
		MR168723	m	20.40
26 Blower Assy				
		MR201746	m #1.0	204.37
27 Case, Blower				
		MR308013	m #1.0	39.73
28 Fan & Motor				
		MB918830	m #1.0	208.83
#Included w/Blower Assy				
#R&R Complete, w/ A/C Add .5				

FRONT FENDER

Use Procedure Explanations 7 and 28 with the following text.

Refinish Fender Outside	R/L	2.0
Add to Edge Fender	R/L	.5
R&I Fender Assy	R/L	#2.0
#Includes R&I Bumper Assy & R&I/R&R Park/Signal Lamp & Fender Liner		
Add to R&I or R&R Fender		
w/Side Air Dam	R/L	.5

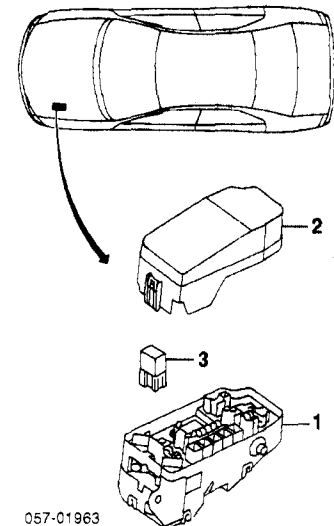


057-02355

1 Fender				
Coupe	R	MR208880	#2.3	171.70
	L	MR208879	#2.3	171.70
Sedan	R	MR208878	#2.3	171.70
	L	MR208877	#2.3	171.70
#Includes R&I Bumper Assy & R&I/R&R Park/Signal Lamp & Fender Liner				
2 Liner Assy, Fender				
Coupe	R/L	MR241356-5	.4	27.65
Sedan	R/L	MR241358-7	.4	27.65
3 Clip, Liner (5/Side)				
	R/L	MR288150		.93
4 Screw, Liner (2/Side)				
	R/L	MS452348		1.00
5 Bolt, Liner				
	R/L	MS100242		.33
6 Nut, Clip (3/Side)				
	R/L	MB138567		1.63
7 Plug				
	R/L	MB586869		1.32
#Included w/Fender Liner Assy				
8 Emblem (Adhesive)				
Black				
Code X08	R/L	MR768696	.2	14.57
Code X42	R/L	MR620990	.2	19.73
Blue				
Code T73	97-98 R/L	MR768698	.2	14.57
Code T38	99-02 R/L	MR791627	.2	16.93
Brown (Code C86)	99-00 R/L	MR791628	.2	16.93
Gold (Code K86)	97-98 R/L	MR768701	.2	14.57
Green Metallic				
Code F89	R/L	MR768702	.2	14.57
Code F26	R/L	MR636080	.2	20.10
Green Pearl				
Code G84	97 R/L	MR768695	.2	14.57
Code G13	98-01 R/L	MR777595	.2	14.22
Red				
Code P85	R/L	MR768700	.2	14.57
Code P78	97-00 R/L	MR768699	.2	14.57
Code R20	R/L	MR625266	.2	19.95
Silver (Code A69)	R/L	MR768697	.2	14.57
White				
Code W83	R/L	MR768694	.2	14.57
Code W13	R/L	MR625875	.2	17.15

9 "ES"				
Black				
Code X08	R/L	MR764653	.2	14.65
Code X42	R/L	MR620989	.2	19.73
Blue				
Code T73	97-98 R/L	MR764654	.2	13.87
Code T38	99-01 R/L	MR791625	.2	18.25
Brown (Code C86)	99-01 R/L	MR791626	.2	18.25
Gold (Code K86)	97-98 R/L	MR764655	.2	13.87
Green Metallic (Code F89)	97-98 R/L	MR759186	.2	13.28
Green Pearl (Code G13)	98-01 R/L	MR777594	.2	13.80
Red				
Code P85	R/L	MR755920	.2	14.60
Code P78	97-00 R/L	MR755919	.2	14.25
Silver (Code A69)	R/L	MR764662	.2	13.80
White				
Code W83	R/L	MR700223	.2	15.87
Code W13	R/L	MR625874	.2	19.73
10 "LS"				
Black				
Code X08	97-00 R/L	MR764650	.2	14.15
Code X42	01-02 R/L	MR620988	.2	19.15
Blue				
Code T73	97-98 R/L	MR764651	.2	14.15
Code T38	99-01 R/L	MR791623	.2	16.43
Code T10	02 R/L	MR639317	.2	20.10
Brown (Code C86)	99-00 R/L	MR791624	.2	15.73
Gold (Code K86)	97-98 R/L	MR764652	.2	14.15
Green Metallic				
Code F89	97-98 R/L	MR759185	.2	13.03
Code F26	R/L	MR636078	.2	20.10
Green Pearl				
Code G84	97 R/L	MR752295	.2	15.13
Code G13	98-01 R/L	MR777593	.2	13.92
Red				
Code P85	R/L	MR755918	.2	14.18
Code P78	R/L	MR755917	.2	14.33
Silver (Code A69)	R/L	MR768693	.2	14.15
White				
Code W83	R/L	MR700216	.2	15.42
Code W13	R/L	MR625873	.2	19.37

ELECTRICAL COMPONENTS



057-01963

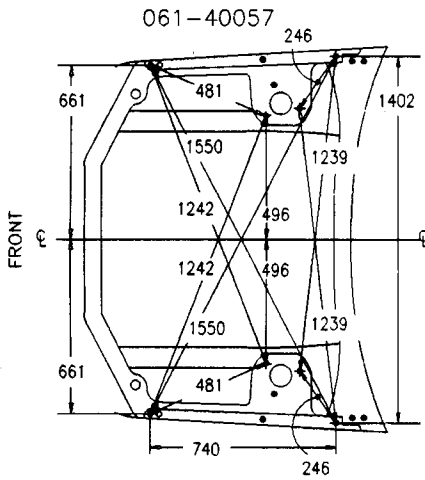
1 Box, Fuse	MR203448	m	48.20
2 Cover, Fuse Box	MR203446		5.90
3 Fuse	MU840021		10.05

#Order by Application

UNDERHOOD DIMENSIONS

1997-2001

Illustration Located in Next Column



2002

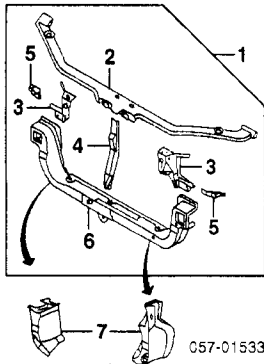
Information not available at time of publication.

FRONT INNER STRUCTURE

Use Procedure Explanations 8 and 28 with the following text.

FRONT

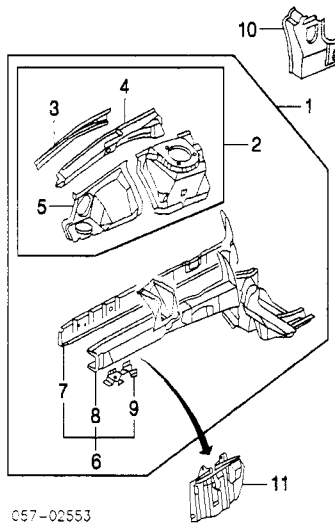
Refinish Radiator Support Assy	1.5
Refinish Upper Tie Bar	.5
Refinish Side Support	R/L .5
Refinish Lower Tie Bar	.5
Add to R&R Radiator Support w/ A/C	m #.3
#Includes R&R/R Condenser	
w/Auto Trans.	.2
To Air Lamps	.4
Evacuate & Recharge System	m 1.4
Refrigerant Recovery	m .3



1 Support Assy, Radiator Coupe	MR208734	s #7.4	232.33
#Includes R&R/R H/Lamp Assemblies, Park/ Signal Lamps, R&R Washer Reservoir Assy, Hood Latch, Battery, Radiator, Coolant Tank Assy, Cooling Fan, Motor & Shroud as an Assy & Disconnect & Connect Hood Release Cable, Wiring &/or Harness			
Sedan	MR208733	s #7.6	232.33
#Includes R&I Grille, R&I/R&R H/Lamp Assemblies, Park/Signal Lamps, R&R Washer Reservoir Assy, Hood Latch, Battery, Radiator, Coolant Tank Assy, Cooling Fan, Motor & Shroud as an Assy & Disconnect & Connect Hood Release Cable, Wiring &/or Harness			
2 Bar, Upper Tie	MR208718	s 2.5	50.47
Coupe	MR208714	s 2.5	50.47
3 Support, Side	R/L MR296404-3	s 3.0	37.02
Sedan	R/L MR296402-1	s 3.0	37.02
4 Brace, Support Center	MR208732	.3	15.97
Coupe	MR208731	.3	15.58
5 Bracket, Horn	R/L MR296408-7		3.98
Sedan	R/L MR296406-5		3.98
6 Bar, Lower Tie	MR208726	s 2.5	113.55
#Included w/Radiator Support Assy			
7 Guide, Air	R/L MR236448-7	.3	5.07

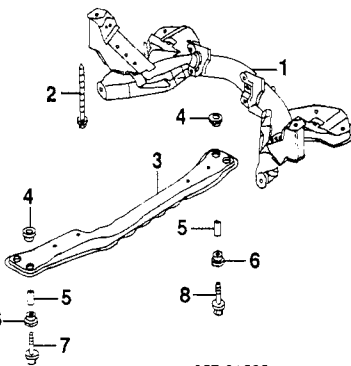
SIDE

Refinish Apron Assy	R/L	1.5
Refinish Inner Wheelhouse Assy	R/L	1.0
Refinish Frt Fender Apron	R/L	1.0
Refinish Sidemember Assy	R/L	1.0



1 Apron Assy	R	MR273760	s #9.5	465.42
	L	MR273759	s #9.5	462.35
2 Wheelhouse Assy, Inner	R/L	MR208716-5	s #7.0	183.65
#w/Radiator Support or Side Support Removed Deduct 1.5				
3 Frame, Outer (a)	R/L	MR208708-7	s #3.0	24.62
4 Frame, Inner (a)	R/L	MR208710-9	s #3.0	37.47
#R&R One Side Complete				
5 Apron, Frt Fender (a)	97 R	MR208712	s #3.0	42.87
	L	MR208711	s #3.0	39.93
	98-02 R	MR208712	s #3.0	42.87
	L	MR208713	s #3.0	54.07
(a) Included w/Inner Wheelhouse Assy				
#w/Radiator Support or Side Support Removed Deduct 1.5				
6 Sidemember Assy	R	MR273762	s #9.0	332.40
	L	MR273761	s #9.0	330.22
#w/Radiator Support or Side Support Removed Deduct .5				
7 Plate, Outer (b)	R/L	MR296410-9	s 2.0	67.70
8 Member, Side (b)	R/L	MR296412-1	s	131.72
9 Bracket, Bumper (b)	R/L	MR296414-3	s	4.27
(b) Included w/Apron Assy				
(b) Included w/Sidemember Assy				
10 Reinf, Side Sill	R/L	MR208720-19	s 2.5	36.93
11 Cover, Side	R	MR185648	.2	17.95
	L	MR185645	.2	17.95

SUB-FRAME

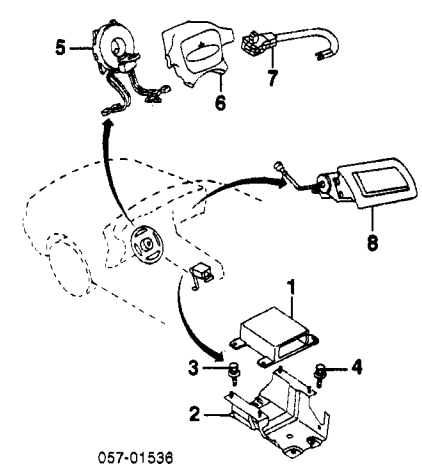


1 Sub-Frame	MR223256	m #4.2	442.67
#Includes R&R Front Member, w/One Side Suspension Removed Deduct .6			
2 Bolt, Mounting	R/L	MR102863	8.15
3 Member, Front	1.5L Eng	MR223255	1.0 171.20
	1.8L Eng	MR197177	1.0 131.13
4 Bushing, Upper (4)		MR198875	1.62
5 Spacer (4)		MB844447	2.98
6 Bushing, Lower (4)		MR198876	1.62
7 Bolt, Front Mounting (2)		MB176661	4.18
8 Bolt, Rear Mounting (2)		MB176660	3.37

AIR BAG SYSTEM

Disable & Enable Air Bag System m .3
 Diagnose Air Bag System (if Required) m .5
 NOTE 1: R&R Does Not include disable & enable or diagnose Air Bag System.

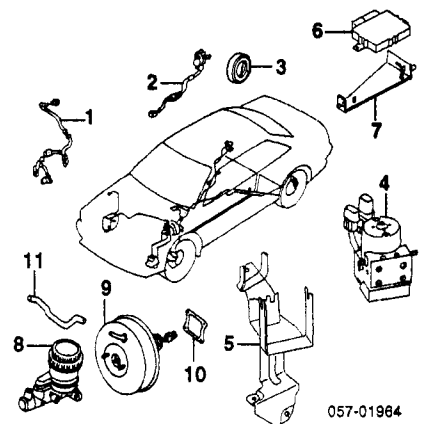
NOTE 2: Refer to Procedure Explanation 30 for Supplemental Restrain/Air Bag Systems Component Inspection and Replacement information.



1 Control Unit, SRS	97-99	MB953175	m #.9	195.72
	00-02	MR490882	m #.9	288.62
#Includes R&I Center Console Assy				
2 Brkt, Control Unit		MB953176		13.25
3 Bolt, Ground		MB133472		1.58
4 Bolt, Mounting (3)		MS240125		.95
5 Clockspring		MR228113	m .9	83.25
1.5L Eng				
1.8L Eng	97-98	MR228114	m .9	112.83
w/Cruise Cont	99-02	MR372517	m .9	104.23
		MR228113	m .9	83.25
6 Module, Driver Air Bag Coupe	97-99	MR763197	m .3	606.95
	00-02	MR617701	m .3	646.00
Sedan Black	97-99	MR763197	m .3	606.95
	00-01	MR617701	m .3	646.00
Gray	97-99	MR307236	m .3	577.13
	00-01	MR617702	m .3	646.00
		MR203491	m	21.20
7 Harness, Air Bag				
8 Module, Pass Air Bag Coupe	97-99	MR366110	m 1.1	852.49
	00-02	MR456998	m 1.1	847.05
Sedan Black	97-99	MR366110	m 1.1	852.49
	00-01	MR456998	m 1.1	847.05
Gray	97-99	MR366111	m 1.1	852.49
	00-01	MR456999	m 1.1	847.05

ABS/BRAKES

Bleed System m .6
 R&R Does Not include bleed system.



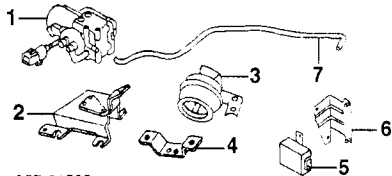
1 Sensor, Front ABS	R/L	MR129957-6	m .9	178.40
2 Sensor, Rear ABS	R/L	MR235956	m .7	41.93
1997				
1998				
To 2-98	R/L	MR235956	m .7	41.93
From 3-98	R/L	MR407839	m .7	55.37
1999-02	R/L	MR407839	m .7	55.37
3 Ring, ABS Sensor	R/L	MR205399	m #.8	53.28
#Includes R&R Rear Hub Assy				
4 Modulator, ABS		MR129948	m 2.2	1347.06
5 Brkt, ABS Modulator		MR205432	m #.2	33.98
#w/Modulator Removed				
6 Control Unit, ABS				
1997		MR527980	m .7	540.70
1998				
To 2-98		MR527980	m .7	540.70
From 3-98		MR527980	m .7	540.70
1999-01		MR527980	m .7	540.70

MITSUBISHI MIRAGE 1997-02

ABS/BRAKES Cont'd

7 Brkt, Control Unit	MR182159			
8 Cylinder, Brake Master				
w/ABS	MR129915	m	1.4	233.37
w/o ABS	MR129910	m	1.0	212.05
9 Booster, Brake	MR205970	m	#1.8	316.12
10 Seal, Brake Booster	MB238089	m	#1.8	2.23
11 Hose, Brake Booster	MR205936	m	#1.8	17.95
#R&R Complete				

CRUISE CONTROL SYSTEM



057-01538

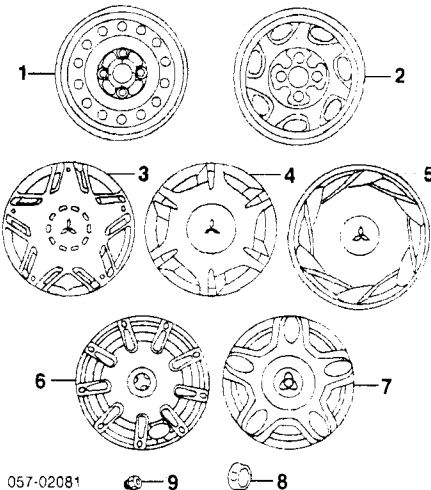
1 Pump, Vacuum	97	MR309271	m	.5	78.78
	98-02	MR309795	m	.5	117.10
2 Brkt, Vacuum Pump	97	MR194842			13.90
	98-02	MR329443			13.70
3 Actuator, Cruise Cont		MD614905	m	.7	261.12
4 Brkt, Actuator		MR194847			5.67
5 Computer, Cruise Cont	97	MR194850	m	.3	187.98
	98-99	MR372877	m	.3	242.77
	00-02	MR490823	m	.3	236.47
6 Brkt, Cruise Computer		MR207532			4.98
7 Hose, Vacuum¶		MR329444			2.30
¶Sold in Rolls, Cut to Fit					

WHEEL

Use Procedure Explanation 10 with the following text.

STEEL WHEEL

Refinish Wheel	.5
Add to R&I Spare Wheel & Tire Assy	.2

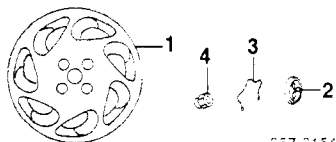


057-02081

1 Wheel, Std				
13x5				
14 Hole	97-00	MR244459	.3	101.95
16 Hole	97-00	MR198212	.3	101.95
14x5.5		MR198214	.3	101.95
2 Wheel, Styled (13x5)	97-99	MB816144	.3	101.95
Cover, Wheel				
3 Type 1	97-98	MR758822		45.15
4 Type 2	97-99	MR758823		45.15
5 Type 3	97-98	MR760552		45.15
6 Type 4	99-02	MR781660		47.42
7 Type 5	99	MR781659		47.42
8 Cap, Wheel Center		MB910100		6.18
9 Nut, Lug				
w/Wheel Cover		MB057636	2.45	
w/o Wheel Cover		MA103087	1.50	

ALLOY WHEEL

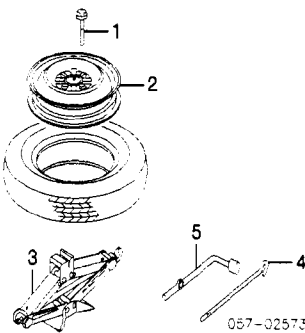
Add to R&I Spare Wheel & Tire Assy .2



057-01540

1 Wheel, Alloy (14x5.5)	MR758092	.3	270.83
2 Cap, Wheel Center			
Black	MB844010		6.18
Silver	MB910100		6.18
3 Spring, Ctr Cap	MB816438		2.30
4 Nut, Lug	MA103087		1.50

SPARE WHEEL & HARDWARE



057-02573

1 Clamp, Spare Wheel	MB870008		5.90
2 Wheel, Spare	97-99	MB816431	71.32
	00-02	MB816432	93.63
3 Jack		MB621154	31.63
4 Handle, Jack		MR297379	10.28
5 Wrench, Lug		MB621148	10.00

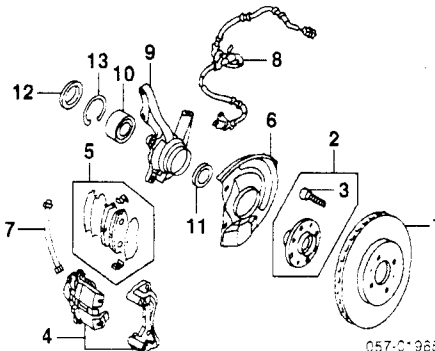
FRONT SUSPENSION

Use Procedure Explanation 11 with the following text.

R&I Suspension (One Side)	R/Lm	1.5
O/H Suspension (Includes R&I)		
One Side	R/Lm	3.3
Both Sides		6.2
Adjust Four Wheel Alignment		2.1
Adjust Front Alignment		1.3

Bleed Brake System
w/ABS m .6
w/o ABS m .3
NOTE 1: R&I/R&R or O/H Does Not include alignment or bleed brake system.

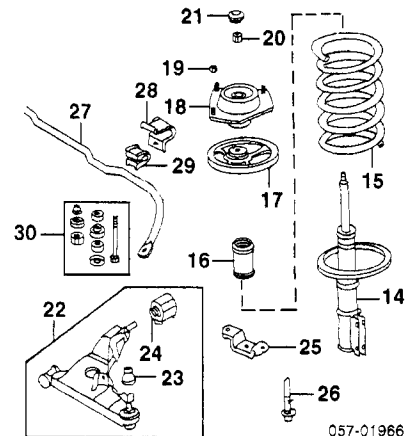
NOTE 2: All Parts in this section are included in overhaul unless noted otherwise.



057-C*965

1 Rotor, Brake				
13" Wheel	R/L	MR449769	m	#6 98.33
14" Wheel	R/L	MR449771	m	#6 95.93
#R&R Both Sides 1.0				
2 Hub Assy, Wheel				
	R/L	MB948961	m	#1.8 71.55
#Includes R&R Knuckle & Brake Rotor, R&R Both Sides 3.4				
3 Stud, Wheel				
	R/L	MB911495	m	1.80
¶Included w/Wheel Hub Assy				
4 Caliper, Brake¶				
13" Wheel	97-00	R/L	RMB928425-4	m #5 R184.50
14" Wheel		R/L	RMB928409-8	m #5 R189.12
¶Remanufactured Part. Contact Dealer for Core Charge & Exchange Information				
#w/Rotor Removed Deduct .3, R&R Both Sides .8				
5 Pad Set, Brake				
13" Wheel	97-00	MR389511	m	#1.0 58.25
14" Wheel	98-99	MR389537	m	#1.0 58.25
	00-02	MR475244	m	#1.0 58.25
#Deduct .5 for Each Caliper Removed				
6 Shield, Splash				
13" Wheel	97-00	R/L	MB857769-8	m #1.8 8.98
14" Wheel		R/L	MB699277-6	m #1.8 11.16
#Included in R&R Knuckle, R&R Both Sides 3.4				
7 Hose, Brake				
13" Wheel	97-00	R/L	MR129882	m #3 25.80
14" Wheel		R/L	MR129881	m #3 15.35
#w/Caliper Removed Deduct .2				
8 Sensor, Front ABS-See ABS/Brakes Section				
9 Knuckle, Steering				
w/ABS	97-99	R	MR198490	m #1.8 226.62
		L	MR198489	m #1.8 232.28
	00-02	R/L	MR455872-1	m #1.8 145.98

w/o ABS	97-99	R/L	MR198488-7	m #1.8	232.28
	00-02	R/L	MR455872-1	m #1.8	145.98
Bearing, Wheel	97-98	R/L	MR449797	m #1.8	35.65
	99	R/L	MR449797	m #1.8	35.65
	00-02	R/L	MR403500	m #1.8	35.65
Seal, Outer		R/L	MB808444	m #1.8	4.80
Seal, Inner		R/L	MB808443	m #1.8	4.80
Ring, Snap		R/L	MB808445	m #1.8	7.72
#R&R One Side Complete, Includes R&R Brake Rotor, R&R Both Sides 3.4					



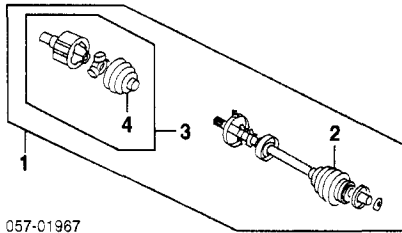
057-01966

14 Strut				
Coupe				
1.5L Eng	R/L	MR297578-7	m	#1.4 93.00
1997	R/L	MR316068-7	m	#1.4 93.00
1998-02				
1.8L Eng	R/L	MR297578-7	m	#1.4 93.00
1997	R/L	MR297998-7	m	#1.4 93.00
1998-02				
Sedan				
1.5L Eng	R/L	MR297578-7	m	#1.4 93.00
1997	R/L	MR316068-7	m	#1.4 93.00
1998-01				
1.8L Eng	R/L	MR297578-7	m	#1.4 93.00
1997	R/L	MR297998-7	m	#1.4 93.00
1998-01				
15 Spring, Coil				
Coupe				
Man Trans	R/L	MR197451	m	#1.4 56.92
Auto Trans	R/L	MR197452	m	#1.4 62.00
Sedan				
1.5L Eng	R/L	MR197452	m	#1.4 62.00
1.8L Eng	R/L	MR197452	m	#1.4 62.00
Man Trans	R/L	MR197453	m	#1.4 62.00
Auto Trans	R/L	MR197453	m	#1.4 66.40
16 Damper, Strut				
1.5L Eng				
1997	R/L	MB349462	m	#1.4 10.78
1998-02	R/L	MR197462	m	#1.4 8.90
1.8L Eng	R/L	MB349462	m	#1.4 10.78
17 Seat, Spring				
1997	R/L	MR297570	m	#1.4 9.18
1998-02	R/L	MR297936	m	#1.4 10.43
18 Insulator, Strut				
1997	R/L	MR131420	m	#1.4 37.40
1998-99	R/L	MR455018	m	#1.4 52.35
2000-02	R/L	MR455018	m	#1.4 52.35
¶Order by Application				
#R&R One Side Complete, R&R Both Sides 2.6, w/Knuckle Removed Deduct 1.0				
19 Nut, Insulator (3/Side)	R/L	MF434105		1.17
20 Nut, Strut	R/L	MU431503		1.47
21 Cover, Strut	R/L	MB109960		1.80
22 Arm Assy, Lwr Cont	97-98	R/L	MR241342-1	m #1.1 125.00
	99-02	R/L	MR439702-1	m #1.1 141.40
#w/Knuckle Removed Deduct .7				
23 Cover, Dust	R/L	MB176047		6.27
24 Bushing, Arm				
1997				
To 8-96	R/L	MR102654-3	m	#1.1 13.67
From 9-96	R	MB808910	m	#1.1 20.42
	L	MB808909	m	#1.1 15.50
1998	R	MB808910	m	#1.1 20.42
	L	MB808909	m	#1.1 15.50
1999-02	R/L	MR102654-3	m	#1.1 13.67
¶Included w/Lwr Cont Arm Assy				
#w/Knuckle Removed Deduct .7				
25 Bracket, Arm				
	R/L	MB808264	m	5.03
26 Bolt, Arm (2/Side)	R/L	MR102862		2.93
27 Bar, Stabilizer		MR198869	m	#2.7 53.30
#Not Included in O/H, Deduct .9 for Each Lower Control Arm Removed				
28 Brkt, Stabilizer				
1997	R/L	MR171442	m	#3 2.97
1998-02	R/L	MR369446	m	#3 3.72
29 Bushing, Stabilizer				
1997				
To 10-97	R/L	MR171441	m	#3 2.25
From 11-97	R/L	MR403082	m	#3 1.63
1998-02	R/L	MR403082	m	#3 1.63
#Not Included in O/H, Included in R&R Stabilizer Bar, R&R One Side Complete				
30 Link Kit, Stabilizer	97-00	R/L	MR954887	m #7 9.65
	01-02	R/L	MR954887	m #7 9.65

#Not Included in O/H

FRONT DRIVE AXLE

R&I Axle Shaft Assy R/Lm #1.1
#w/Knuckle or Hub Removed Deduct .9



057-01967

1 Shaft Assy, Axle				
1.5L Eng	R	MR222052	m #1.1	492.95
	L	MR232357	m #1.1	492.95
1.8L Eng				
Coupe				
w/ABS	R	MR222054	m #1.1	492.95
	L	MR222055	m #1.1	480.93
w/o ABS	R/L	MR222056-7	m #1.1	492.95
Sedan				
w/ABS	R	MR222054	m #1.1	492.95
	L	MR232363	m #1.1	480.93
w/o ABS	R	MR222056	m #1.1	492.95
	L	MR232361	m #1.1	492.95

¶Order by Application

#w/Knuckle or Hub Removed Deduct .9

2 Boot Kit, Outer				
	R/L	MR276442	m #.3	57.98
3 Joint Assy, Inner				
1.5L Eng	R/L	MR276443	m #.3	235.77
1.8L Eng	R/L	MR276445	m #.3	236.12
4 Boot Kit, Inner (a)				
	R/L	MR276444	m #.3	56.57

¶Included w/Axle Shaft Assy

(a) Included w/Inner Joint Assy

#R&R One Side Complete, w/Axle Shaft Removed

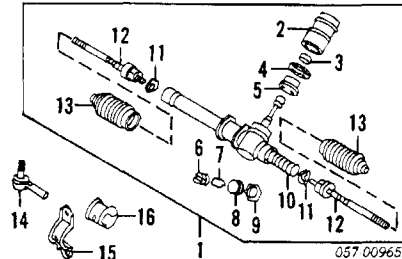
FRONT STEERING LINKAGE/GEAR

MANUAL

R&I Steering Gear m 1.9
O/H Steering Gear (Includes R&I) m 3.9

NOTE 1: R&R Does Not include adjust wheel alignment.

NOTE 2: All Parts in this section are included in overhaul unless noted otherwise.



057 00965

1 Gear Assy, Steering				
		MB870949	m 2.1	853.23
2 Cover, Pinion				
		MB910935	m	7.65
3 Seal, Pinion				
		MB412315	m	9.10
4 Nut, Pinion				
		MB412314	m	5.04
5 Cover, Housing				
		MB489508	m	12.64
6 Plug, Housing				
		MB532526	m	8.31
7 Spring				
		MB315560	m	1.40
8 Cover, Plug				
		MB315174	m	6.92
9 Nut, Retaining				
		MB006415	m	4.13
10 Rack, Steering Gear				
		MB910943	m	157.23
11 Washer, Thrust				
	R/L	MB266164	m	4.60
12 Rod, Tie				
	R/L	MR297969	m #2.2	52.83
13 Boot				
	R	MB532531	m #2.2	17.65
	L	MB501711	m #2.2	16.52

¶Included w/Steering Gear Assy

#R&R One Side Complete, Includes R&I Steering Gear Assy & R&R Tie Rod End

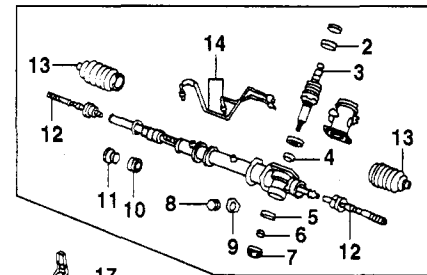
14 End, Tie Rod				
	R/L	MR476457	m .3	27.60
15 Bracket, Gear Mount				
	R	MB288982	m .2	2.33
	L	MR197376	m .2	3.28
16 Bushing, Gear Mount				
	R	MB532397	m	6.08
	L	MR197377	m	4.03

POWER

R&I Steering Gear m 2.8
O/H Steering Gear (Includes R&I) m 4.8

NOTE 1: R&R Does Not include adjust wheel alignment.

NOTE 2: All Parts in this section are included in overhaul unless noted otherwise.



057-01968

1 Gear Assy, Steering				
97-98		MR244928	m 3.0	1099.28
99-02		MR272471	m 3.0	1283.83
2 Bearing, Pinion				
		MB636916	m	14.30
3 Pinion				
		MR316957	m	282.53
4 Bearing, Housing Upper				
		MB350616	m	11.03
5 Bearing, Housing Lower				
		MB870071	m	11.52
6 Nut, Pinion				
		MB243335	m	4.38
7 Plug, Lower				
		MB243336	m	11.90
8 Cover, Plug				
		MR297968	m	4.25
9 Nut, Retaining				
		MB006415	m	4.13
10 Bushing, Inner				
		MR103272	m	23.31
11 Stopper, End				
		MR316959	m	6.58
12 Rod, Tie				
	R/L	MR297969	m #3.1	52.83
13 Boot				
	R/L	MR297971	m #3.1	15.72

#R&R One Side Complete, Includes R&I Steering Gear Assy & R&R Tie Rod End

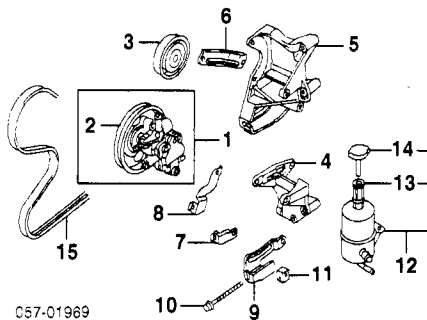
14 Tube, Oil Feed				
	R	MR333003	m #.4	37.97
	L	MR103279	m #.4	51.03

¶Included w/Steering Gear Assy

#R&R Both .6

15 End, Tie Rod				
	R/L	MR476457	m .3	27.60
16 Bracket, Gear Mount				
1997				
	R	MB553744	m .2	4.47
	L	MR316594	m .2	3.12
1998-02				
	R	MB553744	m .2	4.47
	L	MR403288	m .2	4.75
17 Bushing, Gear Mount				
1997		MR197377	m	4.03
1998-02		MB864381	m	5.43

STEERING PUMP

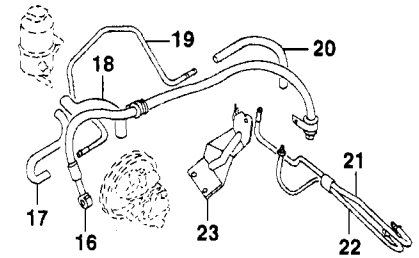


057-01969

1 Pump Assy, Steering				
1997-98		MR198180	m 1.0	659.40
1999-02		MR403656	m 1.0	659.40
2 Pulley, Strg Pump				
		MR491327	m #.2	66.58
3 Pulley, Tensioner				
1.8L Eng				
w/ A/C		MD308882	m	81.27
w/o A/C		MD312403	m	16.22
Bracket, Pump Mtg				
4 1.5L Eng	97-00	MD323913	#.2	32.88
	01-02	MD374377	#.2	32.88
5 1.8L Eng		MD335665	#.2	44.05

#w/Pump Assy Removed

6 Stay, Pump Bkt				
1.8L Eng		MD331807		8.52
Bracket, Pump Rear				
7 1.5L Eng		MR277725		2.22
8 1.8L Eng		MR285269		2.35
9 Bracket, Adjust				
1.5L Eng		MR197569		12.45
10 Bolt, Adjust				
1.5L Eng		MD320270		3.70
11 Block, Adjust				
1.5L Eng		MD332340		.72
12 Reservoir Assy, Fluid				
		MR131449	m #.8	39.70
13 Filter, Reservoir				
		MB350950	m #.8	8.35
#R&R Complete				
14 Cap, Reservoir	97	MB288989		10.12
	98-02	MR272335		10.12
¶Included w/Fluid Reservoir Assy				
15 Belt, Drive-See Cooling Section				



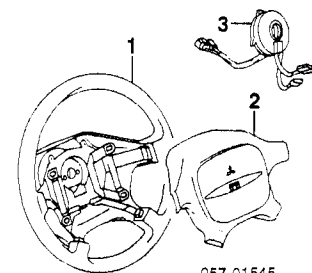
057-01970

16 Hose, Pressure				
1.5L Eng				
	97-99	MR333192	m .8	147.77
	00-02	MR272677	m .8	102.80
1.8L Eng				
	97-99	MR333193	m .8	147.77
	00-02	MR272678	m .8	100.80
17 Hose, Return				
18 Hose, Suction				
1.5L Eng		MR197572	m .5	16.00
1.8L Eng		MR197573	m .5	18.40
19 Pipe, Return				
		MR244852	m .6	6.50
20 Hose, Return				
		MR297533	m .6	11.23
21 Pipe, Gear Return				
		MR316593	m #.6	8.90
22 Pipe, Gear Pressure				
		MR198188	m #.6	11.05
#R&R Complete				
23 Bracket, Strg Hose				
		MR197595		20.22

STEERING WHEEL/COLUMN

NOTE: All Parts in this section are included in overhaul unless noted otherwise.

WHEEL & TRIM



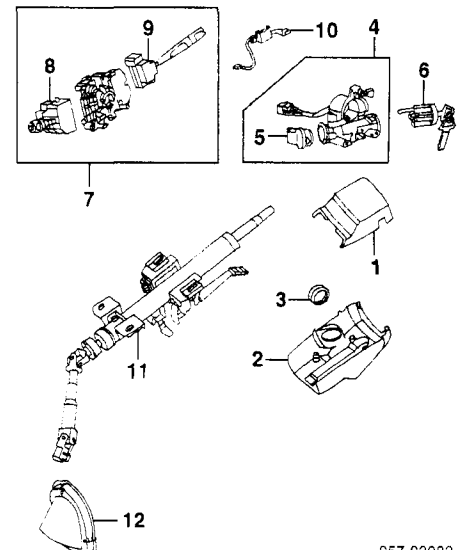
057-01545

1 Wheel, Steering				
w/Cruise Control				
Black		MR767468	m .5	208.13
Gray		MR307230	m .5	208.13
w/o Cruise Control				
Black		MR763193	m .5	208.13
Gray		MR307228	m .5	212.30
2 Module, Air Bag-See Air Bag System Section				
3 Clockspring-See Air Bag System Section				

COLUMN

R&I Steering Column m 1.3
O/H Steering Column (Includes R&I) m 2.5

NOTE: All Parts in this section are included in overhaul unless noted otherwise.



057-02082

MITSUBISHI MIRAGE 1997-02

STEERING WHEEL/COLUMN Cont'd

COLUMN Cont'd

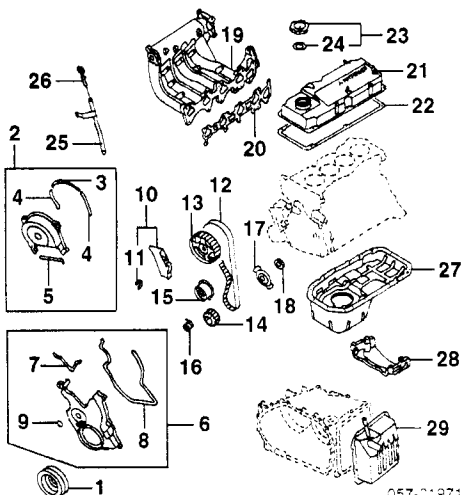
1 Cover, Upper					
Black	MR759307	m	#.2	7.57	
Gray	MR756092	m	#.2	7.70	
2 Cover, Lower					
Black	MR759306	m	#.2	10.52	
Gray	MR756091	m	#.2	10.52	
#R&R Complete					
3 Grommet	MB522123	m		1.50	
4 Switch Assy, Ignition					
Man Trans	MR203248	m	.8	45.23	
Auto Trans	MR203249	m	.8	45.60	
5 Switch, Ignition	MB903644	m	.8	37.30	
<i>†Included w/Ignition Switch Assy</i>					
6 Cylinder, Lock					
Man Trans	MR289334	m	.8	25.15	
Auto Trans	MR296628	m	.8	25.15	
7 Switch Assy, Combination					
1.5L Eng					
1997-99					
Std Wiper	97-98 MR277910	m		176.87	
	99 MR459863	m		137.63	
Variable Wiper	97-98 MR277906	m		100.60	
	99 MR459859	m		197.70	
2000-02	MR495729	m		221.87	
1.8L Eng					
w/Cruise Cont	97-98 MR277907	m		148.92	
	99 MR459860	m		133.63	
	00-02 MR495707	m		187.45	
w/o Cruise Cont	97-98 MR277906	m		100.60	
	99 MR459859	m		197.70	
	00-01 MR495729	m		221.87	
	97-99 MR277924	m	.9	71.28	
	00-02 MR459916	m	.9	80.75	
8 Switch, Turn Signal					
1.5L Eng					
1997-99					
Std Wiper	MR277926	m	.7	63.75	
Variable Wiper	MR277927	m	.7	68.43	
2000-02	MR459912	m	.7	90.93	
1.8L Eng					
1997-99					
w/Cruise Cont	MR277928	m	.7	64.87	
w/o Cruise Cont	MR277927	m	.7	68.43	
2000-02	MR459913	m	.7	90.93	
<i>†Included w/Combination Switch Assy</i>					
10 Switch, Cruise Cont					
97-98	MB903174	m	.8	50.95	
99-02	MR409940	m	.8	49.70	
11 Column, Steering					
w/Tilt	MR198187	m	1.5	406.75	
w/o Tilt	97-99 MR235037	m	1.5	175.40	
	00-02 MR235461	m	1.5	165.95	
12 Cover, Dust	MR307585	m		12.28	

ENGINE/TRANS

Use Procedure Explanation 12 with the following text.

1.5L ENG

R&I Engine/Trans Assy	m	7.9
Add to R&I Engine/Trans Assy		
w/ A/C	m	.3
w/Auto Trans	m	.5
w/Pwr Strg	m	.2



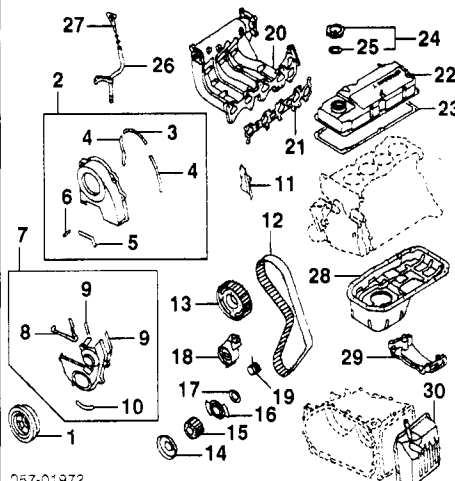
1 Pulley/Damper, Crank	97-99 MD331249	m	#1.1	81.56
	00-02 MD356151	m	#1.1	96.92
#w/ A/C Add .2, w/Pwr Strg Add .3				
2 Cover Assy, Upper Timing	MD328003	m	#.3	17.77
3 Gskt, Upper Center	MD325907	m	#.3	1.07
4 Gskt, Upper Side	R MD188123	m	#.3	.88
	L MD325406	m	#.3	.48
5 Gskt, Lower	MD320454	m	#.3	.82
<i>†Included w/Upper Timing Cover Assy</i>				
#R&R Complete				
6 Cover Assy, Lower Timing	MD331679	m	#1.7	20.28

#Includes R&R Crankshaft Pulley & Upper Timing

7 Gskt, Outer (a)	MD326456	m		.82
8 Gskt, Inner (a)	MD331584	m		8.52
9 Plug, Cover (a)	MD006668	m		2.42
<i>(a) Included w/Lower Timing Cover Assy</i>				
10 Cover Assy, Lower Inner	MD331681	m		9.20
11 Gskt, Lwr Inr Cover (b)	MD312314	m		1.10
<i>(b) Included w/Lower Inner Cover Assy</i>				
12 Belt, Timing	MD340625	m	#2.4	43.12
#w/ A/C Add .2, w/Pwr Strg Add .3				
13 Sprocket, Camshaft	MD312638	m	#.1	20.80
14 Sprocket, Crankshaft	MD356723	m	#.3	21.73
#w/Timing Belt Removed				
15 Tensioner, Timing Belt	97-99 MD329976	m	#.2	45.67
	00-02 MD356509	m	#.2	47.48
	MD332276	m	#.2	3.35
16 Spring, Tensioner				
#R&R Complete, w/Timing Belt Removed				
17 Blade, Crank Angle	97-98 MD300345	m		5.63
	99-02 MD362576	m		6.83
18 Spacer, Crank Sprocket	MD300344	m		2.02
19 Manifold, Intake	MD323130	m	#3.1	306.25
20 Gasket, Intake Manifold	MD322825	m	#3.1	8.67
#R&R Complete				
21 Cover, Valve	MD352038	m	#.6	226.72
22 Gasket, Valve Cover	MD312914	m	#.6	8.27
#R&R Complete				
23 Cap Assy, Oil	MD363392	m		8.67
24 Seal, Oil Cap	MD311638	m		.98
<i>†Included w/Oil Cap Assy</i>				
25 Tube, Engine Dipstick	MD317688	m		11.23
26 Dipstick, Engine Oil	MD127058	m		14.75
27 Pan, Eng Oil	MD322857	m	#1.1	89.53
Sealant, Eng Oil Pan	A990ZC1X01			16.67
28 Stay, Frt Lwr Cover				
1997				
To 3-97	MD324701	m	#1.1	21.48
From 4-97	MD344807	m	#1.1	21.17
1998-02	MD344807	m	#1.1	21.17
#R&R Complete				
29 Pan, Trans Oil	MD758639	m	.9	43.00
Sealant, Trans Oil Pan	A990ZC1X02			17.13

1.8L ENG

R&I Engine/Trans Assy	m	7.9
Add to R&I Engine/Trans Assy		
w/ A/C	m	.3
w/Auto Trans	m	.5
w/Pwr Strg	m	.2

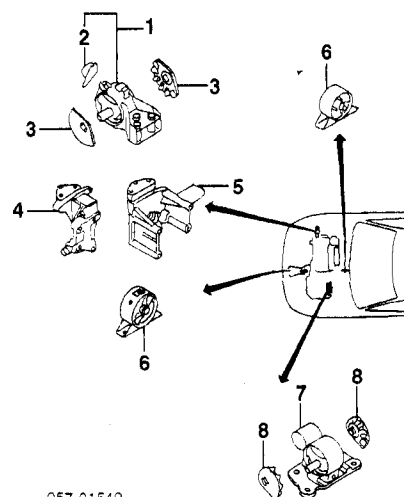


057-01972

1 Pulley/Damper, Crankshaft	97-00 MD350781	m	#1.1	99.33
	01-02 MD373417	m	#1.1	122.27
#w/ A/C Add .2, w/Pwr Strg Add .3				
2 Cover Assy, Upper Timing	MD319942	m	#.3	30.97
3 Gskt, Upper Center	MD191939	m	#.3	2.88
4 Gskt, Upper Side	R MD302600	m	#.3	1.57
	L MD302602	m	#.3	1.52
5 Gskt, Lower Outer	MD302598	m	#.3	1.07
6 Gskt, Lower Side	MD188121	m	#.3	.90
<i>†Included w/Upper Timing Cover Assy</i>				
#R&R Complete				
7 Cover Assy, Lower Timing	97-00 MD309888	m	#1.7	18.95
	01-02 MD372750	m	#1.7	36.50
#Includes R&R Crankshaft Pulley & Upper Timing				
Cover				
8 Gskt, Upper Outer (a)	97-00 MD309898	m		1.07
	01-02 MD348761	m		1.77
9 Gskt, Upper Inner (a)	R MD191939	m		2.88
	L MD309897	m		3.33
	MD307409	m		5.68
10 Gskt, Lower (a)				
<i>(a) Included w/Lower Timing Cover Assy</i>				
11 Cover, Lower Inner	MD317332	m		9.20
12 Belt, Timing	MD191982	m	#2.4	59.53
#w/ A/C Add .2, w/Pwr Strg Add .3				
13 Sprocket, Camshaft	MD301986	m	#.1	21.42
#w/Timing Belt Removed				
14 Flange, Crankshaft Sprocket	MD096940	m	#.3	7.38
15 Sprocket, Crankshaft	MD190863	m	#.3	32.02
16 Blade, Crankshaft Angle	MD190865	m	#.3	50.52
17 Spacer, Crankshaft Sprocket	MD309036	m	#.3	5.02

18 Tensioner, Timing Belt	MD320174	m	#.2	42.30
19 Spring, Tensioner	MD314047	m	#.2	1.93
#R&R Complete, w/Timing Belt Removed				
20 Manifold, Intake	97 MD330835	m	#3.1	420.95
	98 MD330836	m	#3.1	414.65
	99-00 MD359880	m	#3.1	402.83
	01-02 MR507800	m	#3.1	374.70
	MD312441	m	#3.1	8.67
21 Gasket, Intake Manifold				
#R&R Complete				
22 Cover, Valve	MD346963	m	#.6	126.05
23 Gasket, Valve Cover	MD307705	m	#.6	8.10
#R&R Complete				
24 Cap Assy, Oil	MD363392	m		8.67
25 Seal, Oil Cap	MD311638	m		.98
<i>†Included w/Oil Cap Assy</i>				
26 Tube, Engine Dipstick	MD317671	m		11.23
27 Dipstick, Engine Oil	MD373036	m		8.68
28 Pan, Eng Oil	MD318675	m	#1.1	107.67
Sealant, Eng Oil Pan	A990ZC1X01			16.67
29 Stay, Frt Lwr Cover				
Man Trans	MD325332	m	#1.1	24.02
Auto Trans	MD325333	m	#1.1	23.87
#R&R Complete				
30 Pan, Trans Oil	MD758639	m	.9	43.00
Sealant, Trans Oil Pan	A990ZC1X02			17.13

ENGINE/TRANS MOUNTS



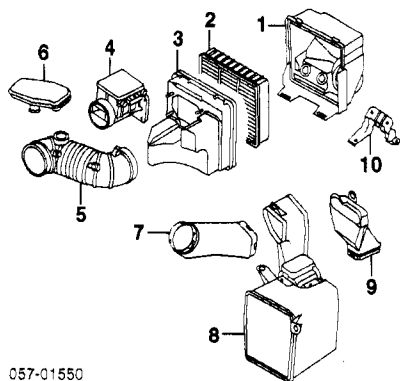
057-01549

1 Mount Assy, Eng Front				
1.5L Eng				
Manual Strg	97-98 MR244345	m	1.0	49.40
	99-02 MR403065	m	1.0	61.60
Power Strg				
1997	MR223925	m	1.0	49.40
1998				
To 12-97	MR223925	m	1.0	49.40
From 1-98	MR403065	m	1.0	61.60
1999-02	MR403065	m	1.0	61.60
1.8L Eng	MR130551	m	1.0	44.35
2 Damper, Dynamic	MB914969	m	.9	12.50
<i>†Included w/Eng Front Mount Assy</i>				
3 Stop, Eng Front Mount (2)	MR197613			3.90
Brkt, Eng Front Mount				
4 1.5L Eng	MD321891	m		60.23
5 1.8L Eng	97-00 MD314973	m		85.90
	01-02 MD354840	m		127.88
6 Mount, Eng Side				
Man Trans	R MR333577	m	.6	34.33
	L MR297256	m	.6	33.03
Auto Trans	R MR131296	m	.6	42.85
	L MR316526	m	.6	33.03
7 Mount, Trans				
1.5L Eng				
Man Trans	MR272063	m	1.0	88.05
Auto Trans	MR272062	m	1.0	89.88
1.8L Eng				
Man Trans	MR131307	m	1.0	88.05
Auto Trans	MR131308	m	1.0	79.88
8 Stop, Trans Mount	R MR197613	m		3.90
	L MR197612	m		3.90

AIR CLEANER

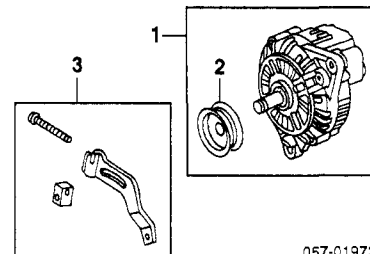
Illustration Located in Next Column

1 Body, Air Cleaner	MR188653	m	#.6	79.57
2 Element, Filter	97-00 MR481794	m	#.6	16.92
	01-02 MR552951	m	#.6	16.92
3 Cover, Air Cleaner				
1.5L Eng	MR188654	m	#.6	48.20
1.8L Eng	MR188656	m	#.6	55.17
4 Meter, Air Flow				
1.8L Eng	97 MD172449	m	#.6	434.63
	98-02 MD343605	m	#.6	256.98



057-01550

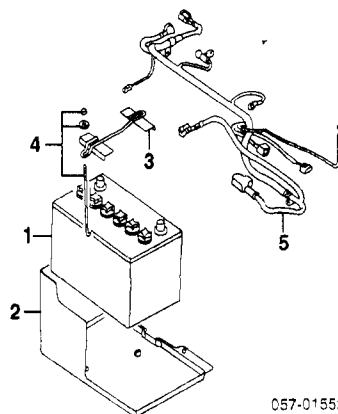
9 Shield, Converter Heat	MR199084	17.25
10 Pipe, Center Exhaust		
1.5L Eng		
Coupe		
1997-00		
w/Calif Emissions	97 MR188849	.8 182.87
	98-00 MR323640	.8 180.13
w/o Calif Emissions	97 MR188850	.8 182.87
	98-00 MR355498	.8 180.13
	98-00 MR323640	.8 180.13
2001-02		
Sedan		
1997-00		
w/Calif Emissions	97 MR188856	.8 178.40
	98-00 MR323638	.8 180.13
w/o Calif Emissions	97 MR188857	.8 182.87
	98-00 MR355500	.8 180.13
	98-00 MR323638	.8 180.13
2001		
1.8L Eng		
Coupe		
1997-00		
w/Calif Emissions	97 MR188851	.8 182.87
	98-00 MR323641	.8 180.13
w/o Calif Emissions	97 MR188852	.8 182.87
	98-00 MR355499	.8 180.13
	98-00 MR323641	.8 180.13
2001-02		
Sedan		
1997-00		
w/Calif Emissions	97 MR188861	.8 182.87
	98-00 MR323639	.8 180.13
w/o Calif Emissions	97 MR188862	.8 182.87
	98-00 MR355501	.8 180.13
	98-00 MR323639	.8 180.13
2001		
1.5L Eng	MB925950	.8 187.93
1.8L Eng	MR188883	.8 187.93



057-01973

2 Pulley, Alternator (a)			
1.5L Eng	MD619386	m	41.78
1.8L Eng	MD618930	m	55.67
(a) Included w/Alternator Assy			
3 Brkt, Adjusting			
1.5L Eng	MD314092	#.2	15.78
1.8L Eng	MD345409	#.2	8.90
#w/Alternator Removed			
Belt, Drive-See Cooling Section			

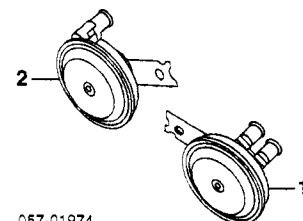
BATTERY



057-01552

1 Battery	N.A.	.2	0.00
2 Tray, Battery	97 MR220529		7.08
	98-02 MR396821		8.18
3 Holder, Battery	MR194569		6.38
4 Bolt, Battery (2)	MB241245		4.40
5 Cable Harness, Battery			
1.5L Eng			
Man Trans	MR207667	.9	99.25
Auto Trans	MR217557	.9	100.03
1.8L Eng			
w/ABS	MR207668	.9	99.25
w/o ABS	MR217557	.9	100.03
¶Order by Application			

HORN



057-01974

1 Horn			
1 High Note	MR275937	#.8	39.70
2 Low Note	MR275938	#.8	39.70
#w/Bumper Removed Deduct .7			

IGNITION

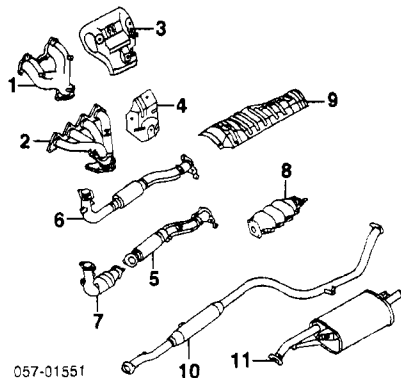
R&R Ignition Coils Complete.....m .5

Illustration Located in Next Column

1 Distributor Assy			
1.5L Eng	MD326834	m .8	435.48
2 Cap, Distributor			
1.5L Eng	MD619219	m #.5	30.18
3 Rotor, Distributor			
1.5L Eng	MD619216	m #.5	13.00
#R&R Complete			
4 Cover, Breaker			
1.5L Eng	MD619218	m	4.23

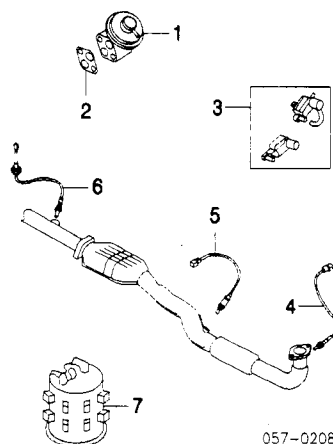
EXHAUST

R&R Exhaust System Complete..... #1.3
#Does Not Include Exhaust Manifold



057-01551

EMISSION SYSTEM



057-02083

1 Valve, EGR	MD327127	m .5	123.63
2 Gskt, EGR Valve	MD119127	m	2.30
3 Valve, Solenoid			
1.5L Eng			
	97 MR224704	m .4	60.60
	98 MR340165	m .4	34.08
	99-02 MR431981	m .4	68.22
1.8L Eng			
	97 MR212660	m .4	60.60
	98 MR212664	m .2	34.08
	99-02 MR385716	m .2	68.22
4 Sensor, Oxygen			
Front			
w/Calif Emissions			
1.5L Eng	97 MD327610	m .5	217.75
	98-02 MD342775	m .5	217.75
1.8L Eng	97 MD331050	m .5	217.75
	98-02 MD342323	m .5	217.75
5 Center			
1.5L Eng	MD327611	m .5	217.75
1.8L Eng			
w/Calif Emissions	MD338846	m .5	217.75
w/o Calif Emissions	MD335431	m .5	217.75
6 Rear			
w/Calif Emissions	MD328152	m .5	217.75
	97 MR161731	m .5	31.63
7 Canister, Vapor			
	98 MR323442	m .5	31.18
	99-02 MR386174	m .5	35.18

ELECTRICAL

ALTERNATOR

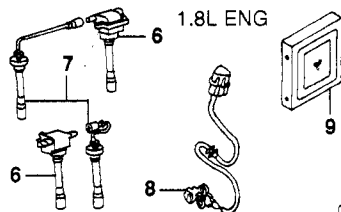
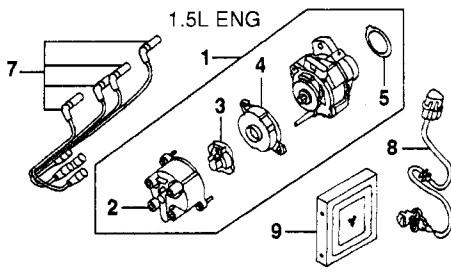
Illustration Located in Next Column

1 Alternator Assy			
1.5L Eng	M325696D	m 1.0	R254.73
1.8L Eng	M317862D	m 1.0	R254.73
¶Remanufactured Part. Contact Dealer for Core Charge & Exchange Information			

MITSUBISHI MIRAGE 1997-02

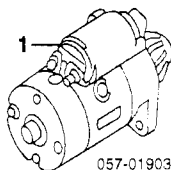
ELECTRICAL Cont'd

IGNITION Cont'd



5 Seal, Distributor [†]				
1.5L Eng	MD618292		2.83	
[†] Included w/Distributor Assy				
6 Coil, Ignition (2)				
1.8L Eng	MD362907	m #.5	89.25	
#R&R One or Both				
7 Wire Set, Ignition				
1.5L Eng	MD332343	m .5	44.92	
1.8L Eng	MD334043	m .5	44.92	
8 Sensor, Eng Crank				
1.5L Eng	MD330891	m #1.3	70.35	
1.8L Eng	MD327122	m #1.3	70.35	
#w/ A/C Add .2, w/Pwr Strg Add .3				
9 Module, Eng Control [†] (a)				
1.5L Eng	MD319563	m .5	540.97	
1.8L Eng	MD322254	m .5	761.37	
[†] Order by Application				
(a) Located behind Left Kick Panel				

STARTER



1 Starter [†] (a)				
1.5L Eng				
1997-98				
Man Trans	M301348D	m 1.3	R165.47	
Auto Trans	M301350D	m 1.3	R165.47	
1999-02	M360368D	m 1.3	R165.47	
1.8L Eng				
1997				
Man Trans	M301348D	m 1.3	R165.47	
Auto Trans	M360368D	m 1.3	R165.47	
1998-02	M360368D	m 1.3	R165.47	
[†] Order by Application				
(a) Remanufactured Part. Contact Dealer for Core Charge & Exchange Information				

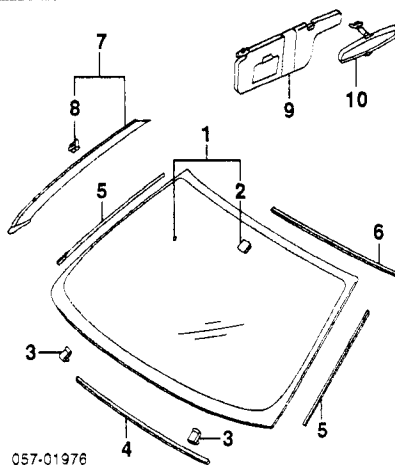
WINDSHIELD

Use Procedure Explanation 13 with the following text.

R&I Windshield Glass..... #3.1
#Includes Clean Up Old Adhesive as Necessary

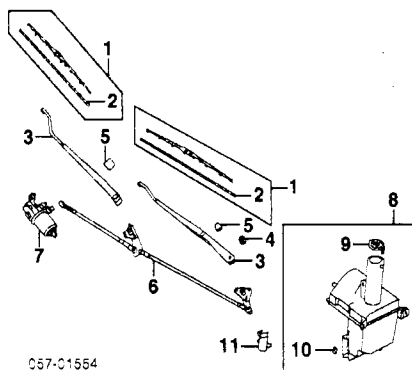
Illustration Located in Next Column

1 Glass Assy, Windshield				
Mitsubishi				
Coupe	MR191556	#2.8	448.10	
Sedan	MR191562	#2.8	448.10	
NAGS				
Coupe				
Green	FW02034GTN	#2.8	539.45	
Green/Blue Shade	FW02034GBN	#2.8	833.15	
Sedan				
Green	FW02035GTN	#2.8	451.00	
Green/Blue Shade	FW02035GBN	#2.8	778.20	
#Includes Clean Up Old Adhesive as Necessary				
2 Support, Mirror [†]	MB958561		4.18	
[†] Included w/Mitsubishi Windshield Glass Assy				



3 Block, Spacer	R/L	MR109930	.52	
4 Channel, Spacer		MB419223	6.73	
5 Dam, Windshield	R/L	MB292508	20.58	
6 Midg, Upper Reveal		MR191589	7.05	
7 Garnish Assy, Inner Pillar				
Coupe				
Beige	R/L	MR770627-6	.2	12.23
Gray	R/L	MR748299-8	.2	18.95
Sedan				
Beige	R/L	MR780943-2	.2	15.30
Gray	R/L	MR748297-6	.2	18.95
8 Clip, Pillar Garnish [†]	R/L	MU470013	.95	
[†] Included w/Garnish Assy				
9 Visor, Sun [†]				
Man Window	R	MR366917	.2	35.80
	L	MR366915	.2	26.67
Pwr Window	R	MR417751	.2	32.17
	L	MR417749	.2	31.23
[†] Gray listed, Order by Application				
10 Mirror, Rear View		MR117005	.2	12.47

WIPER SYSTEM

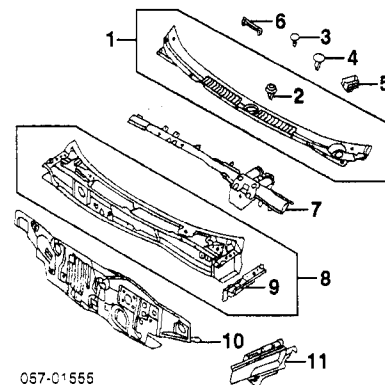


1 Blade Assy, Wiper	R	MR245987	.1	15.83
	L	MR245991	.1	14.53
2 Insert, Blade [†]	R	MR300008	.1	7.30
	L	MR300006	.1	7.30
[†] Included w/Wiper Blade Assy				
3 Arm, Wiper	R/L	MR245986-5	#.2	23.05
#Includes R&R Blade Assy or Insert				
4 Nut, Retaining	R/L	MF430121		.35
5 Cover, Nut	R	MB821132		2.57
	L	MR300585		1.15
6 Link, Wiper		MR192051	.7	60.90
7 Motor, Wiper		MR192056	.7	168.30
8 Reservoir Assy, Washer		MR192217	.9	38.77
9 Cap, Reservoir [†]		MR192438		2.22
10 Seal, Grommet [†]		MC645482		3.50
[†] Included w/Washer Reservoir Assy				
11 Pump, Washer		MB286961	#.6	32.55
#Included in R&R Washer Reservoir				
Gskt, Washer Pump		MR221989		2.55

COWL & DASH

Use Procedure Explanations 14 and 28 with the following text.

Refinish Cowl Top Panel..... 1.2
Refinish Dash Panel..... #1.5
#Includes Refinish Cowl Top Panel



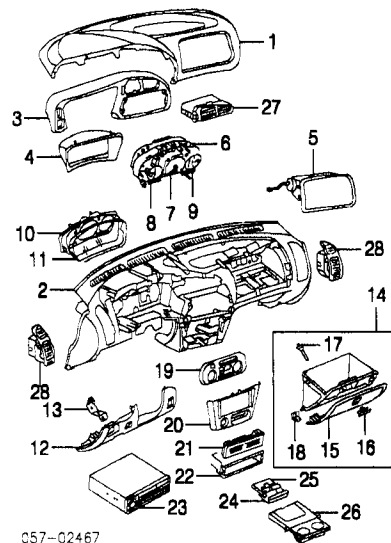
1 Garnish Assy, Cowl	MR191511	#.5	40.57	
#Includes R&R Wiper Blade Assemblies				
2 Clip, Cowl Garnish [†] (3)	MB566720		.97	
[†] Included w/Cowl Garnish Assy				
Fastener, Garnish				
3 Black (2)	MB814166		.47	
4 Blue (5)	MS470075		.35	
5 Retainer, Garnish				
Yellow (2)	MB814167		.77	
6 Holder, Garnish	R/L	MR191527	6.10	
7 Crossmember, Cowl		MR241732	275.08	
8 Panel Assy, Top Cowl		MR273805	6.0	221.67
9 Extension, Uptr Frame [†]	R/L	MR273318-7	15.78	
[†] Included w/Cowl Top Panel Assy				
10 Panel, Dash				
Man Trans	MR241704	#14.0	220.38	
Auto Trans	MR592405	#14.0	298.92	
#w/Cowl Top Panel Removed Deduct 2.0, Deduct 4.0 for Each Side Structure Assy Removed				
Insulator, Dash		MR185654		36.93
11 Extension, Top Cowl	R/L	MR208632-1		32.02

INSTRUMENT PANEL

Use Procedure Explanation 14 with the following text.

R&I Instrument Panel Assy..... m 4.0

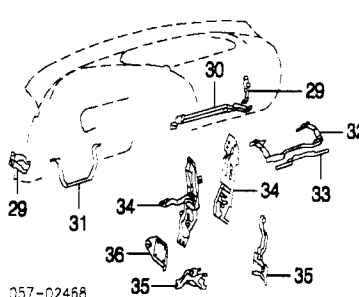
NOTE: All Parts in this section are included in R&R Instrument Panel unless noted otherwise.



1 Pad, Instrument Panel				
Coupe	MR761087	m #6.7	103.83	
Sedan				
Black	98-01 MR761087	m #6.7	103.83	
Gray	MR756081	m #6.7	137.90	
2 Panel, Instrument				
Coupe	MR761772	m #6.7	209.37	
Sedan				
Black	98-01 MR761772	m #6.7	209.37	
Gray	MR761773	m #6.7	209.37	
#R&R Complete				
3 Panel, Inst Cluster	MR756093		36.73	
4 Bezel, Inst Cluster	MR189252		44.35	
5 Module, Pass Air Bag-See Air Bag System Section				
6 Housing, Instrument				
Coupe				
DE, ES Model	MR240864	m #.9	25.90	
LS Model				
1997-98				
Man Trans	MR240832	m #.9	25.90	
Auto Trans	MR240864	m #.9	25.90	

1990-02 Sedan	MR240832	m #.9	25.90
7 Speedometer Coupe	MR240864	m #.9	25.90
DE, ES Model	97-98 MR262880	m #.9	171.18
	99-02 MR444587	m #.9	193.17
LS Model			
1997-98			
Man Trans	MR262873	m #.9	167.00
Auto Trans	MR262880	m #.9	171.18
1999	MR456585	m #.9	208.45
2000-02			
w/White Face	MR456585	m #.9	208.45
w/o White Face	MR444590	m #.9	239.77
Sedan			
w/White Face	MR456585	m #.9	208.45
w/o White Face			
1997-98	MR262880	m #.9	171.18
1999-01	MR444587	m #.9	193.17
†Order by Application			
8 Gauge, Fuel	97-98 MR240871	m #.9	41.13
	99-02 MR471232	m #.9	45.75
Gauge, Tachometer			
w/White Face	MR456586	m #.9	251.13
w/o White Face	97-98 MR262641	m #.9	232.55
	99-02 MR390593	m #.9	271.68
9 Gauge, Water Temp			
Standard			
Man Trans	97-98 MR240873	m #.9	41.13
	99-02 MR471230	m #.9	45.75
Auto Trans	97-98 MR240872	m #.9	42.05
	99-02 MR471231	m #.9	45.75
Temp/Fuel Combo			
w/White Face	MR456587	m #.9	86.90
w/o White Face	97-98 MR240853	m #.9	69.28
	99-02 MR471229	m #.9	101.93
10 Faceplate, Instrument			
Coupe			
DE Model	97-98 MR240863	m #.9	20.87
	99-02 MR390515	m #.9	25.80
LS Model			
1997-98			
Man Trans	MR240831	m #.9	20.87
Auto Trans	MR240863	m #.9	20.87
1999-02	MR390532	m #.9	25.27
Sedan			
w/Tachometer	MR390532	m #.9	25.27
w/o Tachometer	97-98 MR240863	m #.9	20.87
	99-01 MR390515	m #.9	25.80
11 Glass, Faceplate			
Coupe			
DE, ES Model	MR240862	m #.9	13.25
LS Model			
1997-98			
Man Trans	MR240830	m #.9	13.90
Auto Trans	MR240862	m #.9	13.25
1999-02	MR240830	m #.9	13.90
Sedan			
w/Tachometer	MR240862	m #.9	13.25
w/o Tachometer	MR240830	m #.9	13.90
†R&R Complete, Includes R&R Cluster Bezel, Not Included in R&R Instrument Panel			
12 Bolster, Lower Knee			
Coupe	MR761841	.3	132.13
Sedan			
Black	98-01 MR761841	.3	132.13
Gray	MR761842	.3	132.13
13 Brkt, Knee Bolster	R MR227727	35.28	
	L MR233437	26.42	
14 Box Assy, Glove			
Coupe	MR761832	.3	61.02
Sedan			
Black	98-01 MR761832	.3	61.02
Gray	MR761833	.3	61.02
15 Door, Glove Box			
Coupe	MR761834	.5	25.20
Sedan			
Black	98-01 MR761834	.5	25.20
Gray	MR761835	.5	25.20
16 Latch (a)			
Coupe	MR777243	.2	5.72
Sedan			
Black	98-01 MR777243	.2	5.72
Gray	MR777328	.2	5.72
(a) Order by Application			
17 Cushion, Glove Box			
1997			
To 1-97	R/L MB327786	.37	
From 2-97	R/L MB562195	1.35	
1998-02	R/L MB562195	1.35	
	R/L MB803593	7.63	
18 Hinge, Glove Box			
†Included w/Glove Box Assy			
19 Panel, Heater Cont Trim	MR756089	.4	15.78
20 Panel, Lower			
Coupe	MR240476	.5	16.05
Sedan			
Black	98-01 MR240476	.5	16.05
Gray	MR756077	.5	16.05
21 Cover, Radio Opng	MR250558	4.47	
22 Box, Accessory	MR330591	13.08	
23 Radio			
1997-01			
AM/FM Cassette	MR318671	.5	508.33
AM/FM CD	97-01 MR318176	.5	1357.34
2002	MR587268	.5	826.88
24 Ashtray			
Coupe	MB946160	.1	43.90
Sedan			
Black	98-01 MB946160	.1	43.90
Gray	MR262901	.1	36.30

25 Cover, Ashtray	MB918769	5.30	
26 Holder, Cup			
Coupe	MB878273	63.90	
Sedan			
Black	98-01 MB878273	63.90	
Gray	MR206054	34.83	
	MR756088	.3	29.12
27 Grille, Center			
28 Grille, Side			
Coupe	R MR748147	.3	15.23
	L MR748145	.3	15.23
Sedan			
Black	98-01 R MR748147	.3	15.23
	L MR748145	.3	15.23
Gray	R MR748148	.3	15.23
	L MR748146	.3	15.23

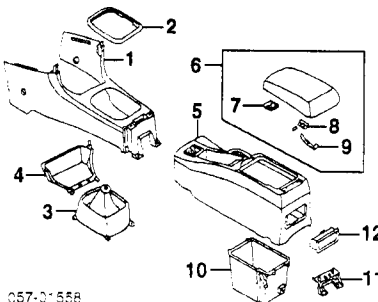


29 Bracket, Inst Panel Side	R MR189211	6.75	
	L MR189209	8.15	
30 Frame, Glove Box	MR189195	13.63	.3
31 Protector, Column	MR233441	15.23	
32 Brkt, Support	MR227361	64.07	
33 Cover, Support Brkt	MR250072	3.70	
34 Brkt, Center	R MR189205	8.27	
	L MR227306	13.25	
35 Reinf, Center Brkt	R MR201541	11.60	
	L MR201540	5.68	
36 Bracket, Radio	R/L MB874344-3	4.32	

CENTER CONSOLE

Use Procedure Explanation 14 with the following text.

R&I Center Console Assy Complete..... .5



1 Console, Front			
Coupe	MR759309	.7	59.82
Sedan			
Black	98-01 MR759309	.7	59.82
Gray	MR756099	.7	60.23
2 Plate, Shift Lever			
Auto Trans	MR189224	.7	8.38
3 Boot, Shift			
Man Trans			
Coupe	MR250481	.7	20.28
Sedan			
Black	98-01 MR250481	.7	20.28
Gray	MR756084	.7	20.28
4 Tray, Console			
Coupe	MR759305	.7	11.30
Sedan			
Black	MR759305	.7	11.30
Gray	MR756090	.7	11.37
†Includes R&R Rear Console, R&R Complete			
5 Console, Rear			
Coupe			
DE Model	MR753194	.5	34.83
LS Model	MR748181	.5	34.83
Sedan			
DE Model	MR748184	.5	34.83
LS Model			
Black	98-01 MR748181	.5	34.83
Gray	MR748182	.5	34.83
†Order by Application			
(a) Gray listed, Order by Application			
6 Lid Assy, Console (a)	MR330456	.2	34.48
7 Lever, Lock	MB869854	13.72	
8 Hinge, Serviced by Console Lid Assy			
9 Stop, Lid	MR240754	3.33	
†Included w/Armrest Assy			

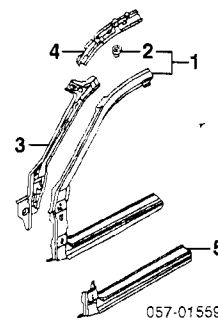
10 Box, Storage	MR189230	11.50	
11 Brkt, Mounting	MR189232	6.58	
12 Ashtray, Rear			
Black	MR748154	.1	11.68
Gray	MR748155	.1	11.68

ROCKER/PILLARS/FLOOR

Use Procedure Explanations 14,15 and 28 with the following text.

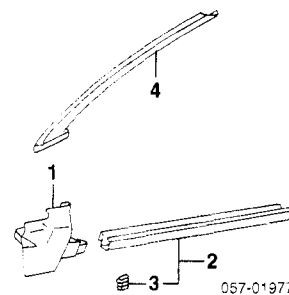
**ROCKER/PILLARS
COUPE
SHEET METAL**

Refinish Outer Hinge Pillar Assy	R/L	1.8
Refinish Hinge Pillar (Section)	R/L	1.0
Refinish Outer Rocker Panel	R/L	1.2
Section Hinge Pillar		
Outer	R/L	7.1
Inner	R/L	1.0



1 Pillar Assy, Outer Hinge			
w/Side Air Dam	R MR241760	s #13.6	332.37
	L MR241765	s #13.6	332.37
†Includes R&R Side Air Dam			
w/o Side Air Dam	R MR273802	s #13.1	330.22
	L MR273801	s #13.1	330.22
2 Nut, Structure	R/L MB291893		1.23
3 Pillar, Inner Hinge	R/L MR241708-7	s #2.0	90.37
4 Rail, Roof Inner			
w/Sunroof	R/L MR208896-5	1.5	34.93
w/o Sunroof	R/L MR208796-5	1.5	64.68
5 Panel, Outer Rocker			
w/Side Air Dam	R MR208784	s #7.5	219.10
	L MR208783	s #7.5	219.10
	R MR208778	s #7.0	235.13
	L MR208777	s #7.0	235.13
†Includes R&R Side Air Dam, Deduct 1.0 w/Quarter Panel Removed			

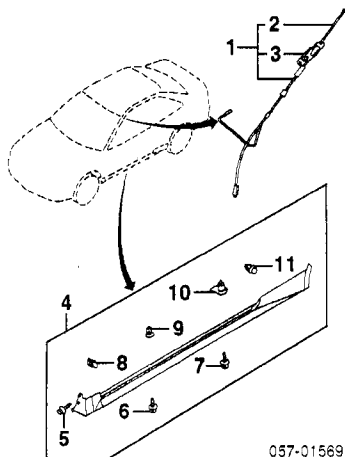
**COUPE
INTERIOR TRIM**



1 Panel, Cowl Trim			
Beige	R MR761777	.3	12.78
	L MR761776	.3	7.40
Black	R MR748294	.3	8.40
	L MR748292	.3	8.40
2 Plate Assy, Scuff			
Beige	R/L MR761755-4	.2	13.40
Black	R MR748397	.2	13.50
	L MR748395	.2	13.50
3 Clip, Scuff Plate			
5/Side	R/L MB918592		1.53
†Included w/Scuff Plate Assy			
4 Garnish, Pillar Inner-See Windshield Section			

**COUPE
EXTERIOR TRIM**

Refinish Side Air Dam Assy	R/L	1.5
R&I Side Air Dam Assy	R/L	.5

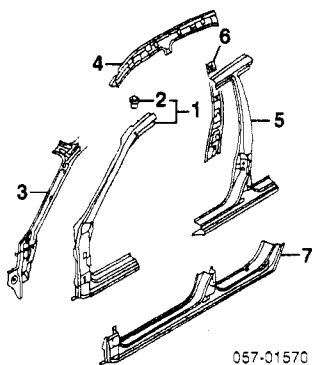
ROCKER/PILLARS/FLOOR Cont'd
**COUPE
EXTERIOR TRIM Cont'd**


057-01569

1 Antenna Assy	MR194612	.6	43.05
2 Mast, Antenna	MB818650	.2	21.25
3 Gasket, Antenna	MB943384		2.92
¶Included w/Antenna Assy			
4 Dam Assy, Side Air (P)	R/L MR241682-1	.5	345.83
(P) Paint to Match			
5 Screw, Frt Mtg (2/Side)	R/L MS452348		1.00
6 Screw, Side Mtg (4/Side)	R/L MS452369		.35
7 Screw, Rear Side	R/L MS452368		.35
8 Nut, Blind (2/Side)	R/L MB138567		1.63
9 Grommet, Side (4/Side)	R/L MU480035		.95
10 Plate, Grommet	R/L MB361579		.85
11 Clip, Push (9/Side)	R/L MB344789		.80
¶Included w/Side Air Dam Assy			

**ROCKER/PILLARS
SEDAN
SHEET METAL**

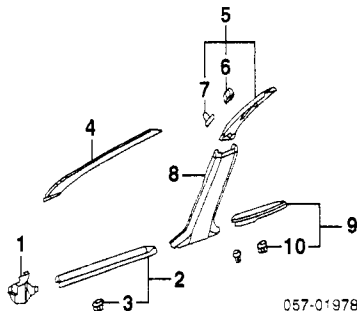
Refinish Outer Hinge Pillar Assy	R/L	1.9
Refinish Hinge Pillar (Section)	R/L	1.0
Refinish Center Pillar	R/L	1.3
Refinish Center Pillar (Section)	R/L	1.0
Refinish Outer Rocker Panel	R/L	1.3
Section Hinge Pillar		
Outer	R/L	7.1
Inner	R/L	1.0
Section Center Pillar	R/L	5.0



057-01570

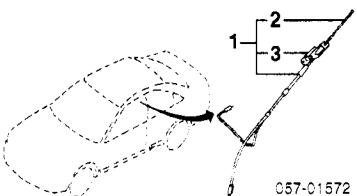
1 Pillar Assy, Outer Hinge	R	MR241740	s	11.6	295.55
	L	MR241743	s	11.6	295.55
2 Nut, Structure	R/L	MB291893			1.23
¶Included w/Outer Hinge Pillar Assy					
3 Pillar, Inner Hinge	R	MR241706	s	2.0	90.37
	L	MR241705	s	2.0	90.37
4 Rail, Roof Inner					
w/Sunroof	R/L	MR208894-3		1.5	98.25
w/o Sunroof	R/L	MR208794-3		1.5	98.25
5 Pillar, Center	R/L	MR273798-7	s	6.5	196.52
6 Reinf, Center Pillar	R/L	MR208798-7	s	2.0	43.05
7 Panel, Outer Rocker	R	MR208760	s	#8.0	265.35
	L	MR208759	s	#8.0	237.65

#Deduct 1.0 w/Quarter Panel Removed

**SEDAN
INTERIOR TRIM**


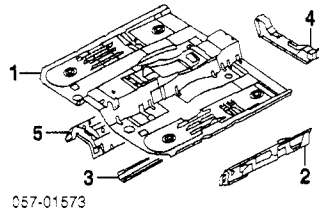
057-01978

1 Panel, Cowl Trim					
Beige	R	MR761777	.3	12.78	
	L	MR761776	.3	7.40	
Gray	R	MR748295	.3	8.40	
	L	MR748293	.3	8.40	
2 Plate Assy, Front Scuff					
Beige	R/L	MR780934-3	.2	17.53	
Gray	R	MR748402	.2	10.57	
	L	MR748400	.2	10.57	
3 Clip, Front Scuff Plate					
4/Side	R/L	MB918592		1.53	
¶Included w/Front Scuff Plate Assy					
4 Garnish, Pillar Inner-See Windshield Section					
5 Trim Assy, Upr Center					
Beige	R/L	MR780947-6	#.4	12.05	
Gray	R/L	MR748305-4	#.4	9.73	
#Includes R&R Lower Center Trim					
6 Clip, Upr Center Trim					
Beige	R/L	MR770632		.47	
Gray	R/L	MR240609		.47	
7 Grommet, Upr Ctr Trim	R/L	MR240561		.37	
¶Included w/Upr Center Trim Assy					
8 Trim, Lower Center					
Beige	R/L	MR780945-4	.2	40.00	
Gray	R	MR748303	.2	12.27	
	L	MR748301	.2	12.27	
9 Plate Assy, Rear Scuff					
Beige	R/L	MR780936-5	.2	8.45	
Gray	R	MR748406	.2	7.48	
	L	MR748404	.2	7.48	
10 Clip, Rear Scuff Plate					
2/Side	R/L	MB918592	.2	1.53	
¶Included w/Rear Scuff Plate Assy					

**SEDAN
EXTERIOR TRIM**


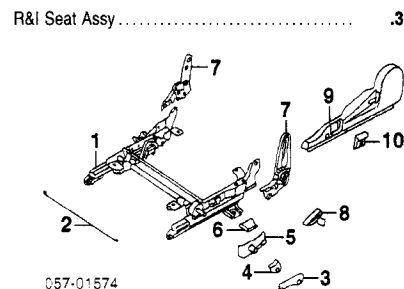
057-01572

1 Antenna Assy	MR194612	.6	43.05
2 Mast, Antenna	MB818650	.2	21.25
3 Gasket, Antenna	MB943384		2.92
¶Included w/Antenna Assy			

FLOOR


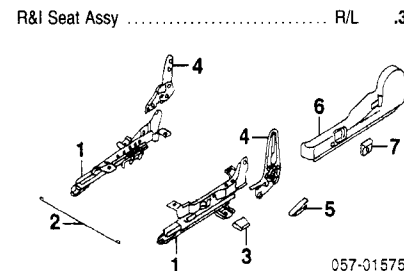
057-01573

1 Pan, Front Floor					
Coupe		MR208274		380.04	
Sedan		MR208273		390.22	
2 Panel, Inner Rocker	R/L	MR208276-5	s	4.0	
3 Sidemember, Floor	R/L	MR208278-7		33.82	
4 Crossmember, Floor	R/L	MR208280-79		38.12	
5 Reinf, Floor Center		MR208891		173.47	

FRONT SEAT
**W/VERTICAL ADJUSTMENT
DRIVER SIDE**


057-01574

R&I Seat Assy			.3		
1 Adjuster, Seat Track	MR219749	.6	216.80		
2 Wire, Seat Adjuster Lever, Vertical Adjuster	MB874502		2.02		
3 Outer					
Beige	97	MR769097		10.73	
	98-02	MR605362		16.92	
Black	97	MR769096		11.05	
	98-02	MR605360		16.92	
Gray	97	MR759762		7.45	
	98-01	MR605361		16.92	
4 Inner					
Beige	97	MR769091		2.82	
	98-02	MR788540		2.38	
Black	97	MR769090		2.88	
	98-02	MR788538		2.38	
Gray	97	MR759761		3.80	
	98-01	MR788539		2.38	
5 Cover, Rail					
Beige	MR769115		10.98		
Black	MR769114		10.98		
Gray	MR759796		11.05		
6 Cover, Seat Anchor					
Beige	MR740596		2.05		
Black	MR960263		1.52		
Gray	MR748265		2.15		
7 Recliner, Seat					
Outer	MB592793	.8	112.10		
Inner	MB916550	.8	97.43		
8 Knob, Recliner					
Beige	MR769094		3.67		
Black	MB725069		4.08		
Gray	MR734688		3.80		
9 Cover, Outer Trim					
Beige	MR769111		10.98		
Black	MR769112		10.98		
Gray	MR759795		11.05		
¶Order by Application					
10 Knob, Slide Adjuster					
Beige	MR769092		6.78		
Black	MB728415		4.15		
Gray	MR734686		7.08		

**W/O VERTICAL ADJUSTMENT
PASSENGER/DRIVER SIDE**


057-01575

R&I Seat Assy			R/L	.3	
1 Adjuster, Seat Track					
Coupe					
Passenger Side					
Outer	97-98	MB902436	#.5	43.85	
	99-02	MB874482	#.5	44.03	
Inner		MR219748	#.5	38.35	
Driver Side					
Outer		MB874481	#.5	50.12	
Inner		MR219747	#.5	38.35	
Sedan					
Passenger Side					
Outer		MB874482	#.5	44.03	
Inner		MR219748	#.5	38.35	
Driver Side					
Outer		MB874481	#.5	50.12	
Inner		MR219747	#.5	38.35	
#R&R Both One Seat 7					
2 Wire, Seat Adjuster	R/L	MB874502		2.02	
3 Cover, Seat Anchor					
Beige	R/L	MR740596		2.05	
Black	R/L	MR960263		1.52	
Gray	R/L	MR748265		2.15	

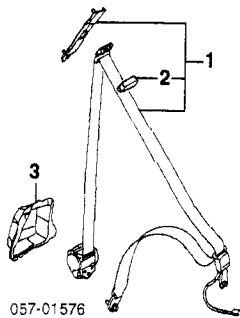
4 Recliner, Seat			
Coupe			
Passenger Side			
Outer	MB874607	.8	117.78
Inner	MB916551	.8	98.38
Driver Side			
Outer	MB592793	.8	112.10
Inner	MB916550	.8	97.43
Sedan			
Passenger Side			
Outer	MB592795	.8	112.10
Inner	MB916551	.8	98.38
Driver Side			
Outer	MB592793	.8	112.10
Inner	MB916550	.8	97.43
5 Knob, Recliner			
Beige	R/L MR769095-4		3.67
Black	R MB725072		4.08
	L MB725069		4.08
Gray	R/L MR734689-8		3.80
6 Cover, Outer Trim			
Beige	R/L MR769113-2		10.98
Black	R/L MR753609-8		11.05
Gray	R/L MR734697-6		11.05
7 Knob, Slide Adjuster			
Beige	R/L MR769093-2		6.78
Black	R MB728419		4.15
	L MB728415		4.15
Gray	R/L MR734687-6		7.08

REAR SEAT

R&I Rear Seat Assy	.4
--------------------	----

SEAT BELTS

FRONT

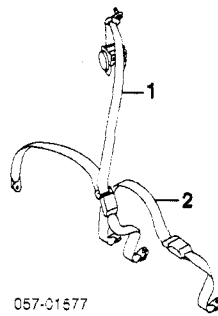


057-01576

1 Belt Assy, Seat

Coupe			
Beige			
97 R	MR279840	#1.2	111.50
L	MR279838	#1.2	111.50
98 R	MR395008	#1.2	131.22
L	MR395006	#1.2	131.22
99 R	MR474023	#1.2	131.22
L	MR474021	#1.2	131.22
00-02 R	MR474031	#1.2	111.82
L	MR606132	#1.2	273.10
Black			
97 R	MR279841	#1.2	111.50
L	MR279839	#1.2	111.50
98 R	MR395007	#1.2	131.22
L	MR395005	#1.2	134.50
99 R	MR474024	#1.2	131.22
L	MR474022	#1.2	131.22
00-02 R	MR474032	#1.2	111.82
L	MR606131	#1.2	273.10
#Includes R&R Lwr Trim Panel Assy, Frt Trim Panel Assy & R&I Rear Seat Assy			
Sedan			
Beige			
98 R	MR395012	#.6	131.22
L	MR395010	#.6	131.22
99 R	MR474028	#.6	131.22
L	MR474026	#.6	131.22
00-01 R	MR474036	#.6	111.82
L	MR606134	#.6	273.10
Gray			
97 R/L	MR279843-2	#.6	111.50
98 R	MR395011	#.6	131.22
L	MR395009	#.6	134.50
99 R	MR474027	#.6	131.22
L	MR474025	#.6	131.22
00-01 R	MR474035	#.6	111.82
L	MR606133	#.6	273.10
#Includes R&R Upr Ctr Trim & Lwr Ctr Trim			
2 Cover, Belt Guide			
Beige			
97 R/L	MR765178-7		1.85
98-02 R/L	MR395021		1.65
Gray			
97 R	MB874943		2.63
L	MB874941		2.63
98-02 R/L	MR779351		1.65
#Included w/Seat Belt Assy			
3 Cover, Retractor			
R/L	MR202620-19		5.20

REAR



057-01577

1 Belt, Outer

Beige	R/L MR306261	#.8	131.22
Black	R/L MR306260	#.8	131.22
Gray	R/L MR306259	#.8	131.22

#Includes R&R Upr Trim Panel & R&I Rear Seat Assy

2 Belt, Center

Beige	MR763924	#.5	41.45
Black	MR748267	#.5	41.45
Gray	MR748266	#.5	41.45

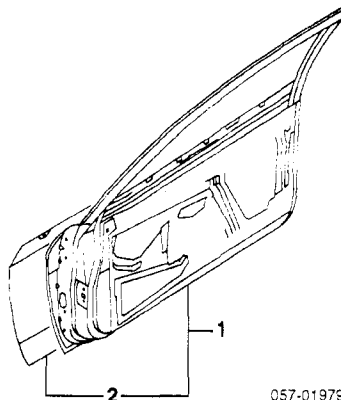
#Includes R&I Rear Seat Assy

FRONT DOOR

Use Procedure Explanations 16 and 28 with the following text.

SHEET METAL

Refinish Door Outside			
Coupe	R/L	2.1	
Sedan	R/L	2.0	
Add for Jambs & Interior	R/L	1.0	
Add for Jambs	R/L	.5	
R&I Door Assy	R/L	.6	
Add to R&I Door Assy or R&R Door Repair Panel w/Power Windows	R/L	.3	
Add to R&R Door Shell w/Power Windows	R/L	.5	



057-01979

1 Shell Assy, Door

Coupe	R	MR273812	#2.7	448.85
	L	MR273811	#2.7	448.85
Sedan	R	MR273810	#2.7	448.85
	L	MR273809	#2.7	448.85

#Includes R&R Mirror

2 Panel, Door Repair

Coupe	R	MR208856	#5.0	171.67
	L	MR208855	#5.0	171.67
Sedan	R	MR208852	#5.0	171.67
	L	MR208851	#5.0	171.67

#Included w/Door Shell Assy

#Includes R&R Mirror & Door Glass

EXTERIOR TRIM

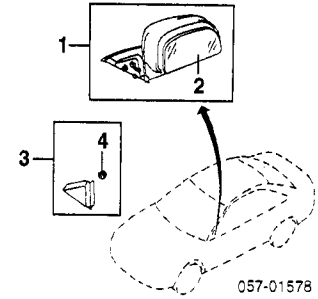
Refinish Rear View Mirror	R/L	.4	
R&I Rear View Mirror	R/L	#.6	

#Includes R&I Trim Panel

Illustration Located in Next Column

1 Mirror Assy, Rear View

Coupe			
DE Model			
Manual	R/L	MR191800-1	#.3 110.72
Manual Remote	R/L	MR191810-1	#.3 110.72



057-01578

LS Model

Manual Remote	R/L	MR191810-1	#.3	110.72
Power Remote				
Black (Code X08)	R	MR322432	#.3	145.37
	L	MR322433	#.3	110.72
Blue (Code T38)	99-00 R	MR791650	#.3	145.37
	L	MR791648	#.3	145.37
	01-02 R	MR614227	#.3	145.37
	L	MR614219	#.3	145.37
Gold (Code K86)	97-98 R	MR361808	#.3	145.37
	L	MR361803	#.3	145.37
Green Metallic				
Code F89	R/L	MR361804-3	#.3	145.37
Code F26	R/L	MR635625-4	#.3	145.37
Green Pearl				
Code G13	R/L	MR606892-1	#.3	145.37
Brown (Code C86)	99-00 R	MR791651	#.3	145.37
	L	MR791649	#.3	145.37
Red				
Code P85	R	MR361808	#.3	145.37
	L	MR361803	#.3	145.37
Code P78	R	MR361808	#.3	145.37
	L	MR361803	#.3	145.37
Code R20	R/L	MR625274-3	#.3	145.37
Silver (Code A69)	98-00 R/L	MR361804-3	#.3	145.37
	01-02 R	MR614223	#.3	145.37
	L	MR614215	#.3	145.37
White				
Code W83	R	MR614221	#.3	145.37
	L	MR614213	#.3	145.37
Code W13	R/L	MR625897-6	#.3	145.37
Paint to Match	98-00 R	MR361808	#.3	145.37
	L	MR361817	#.3	145.37
Sedan				
Manual				
Manual Remote	R/L	MR191900-1	#.3	110.72
	R	MR478938	#.3	110.72
	L	MR191911	#.3	110.72
Power Remote				
Black (Code X08)	R/L	MR322446-7	#.3	145.37
Blue (Code T38)	99-00 R	MR791654	#.3	145.37
	L	MR791652	#.3	145.37
	01 R	MR614243	#.3	145.37
	L	MR614235	#.3	145.37
Brown (Code C86)	99-00 R	MR791655	#.3	145.37
	L	MR791653	#.3	145.37
Red				
Code P78	98-00 R	MR606968	#.3	145.37
	L	MR606958	#.3	145.37
Code R85	R	MR606969	#.3	145.37
	L	MR614233	#.3	145.37
Silver (Code A69)	98-00 R	MR606972	#.3	145.37
	L	MR606958	#.3	145.37
White				
Code W38	97-98 R	MR606965	#.3	145.37
	L	MR606958	#.3	145.37
	99-01 R	MR614229	#.3	145.37
	L	MR614237	#.3	145.37
Code W13	R/L	MR625899-8	#.3	145.37
Paint to Match	R	MR606972	#.3	145.37
	L	MR606958	#.3	145.37
#Order by Application				
#w/Trim Panel Removed				
2 Glass, Mirror				
Manual (a)				
	R	MR275330		39.70
	L	MR275333		39.70
Power				
	R	MR322468		39.70
	L	MR322471		39.70
#Included w/Rear View Mirror Assy				
(a) Add'l Parts &/or Dealer Contact Required				
3 Cover Assy, Inner Trim				
Coupe				
w/Hole	R/L	MR191534-3		5.98
w/o Hole	R/L	MR191532-1		5.98
Sedan				
w/Hole	R/L	MR191538-7		5.98
w/o Hole	R/L	MR191536-5		5.98
4 Clip, Cover (2/Side)	R/L	MU481256		.55
#Included w/Inner Trim Cover Assy				

INTERIOR TRIM

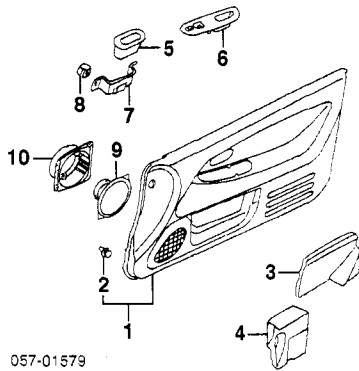
R&I Trim Panel	R/L	.3
----------------	-----	----

NOTE: All Parts in this section are included in R&R Trim Panel unless noted otherwise.

MITSUBISHI MIRAGE 1997-02

FRONT DOOR Cont'd

INTERIOR TRIM Cont'd



057-01579

1 Panel Assy, Trim

Coupe

1997-00

DE Model

97 R	MR761800	.4	225.32
L	MR761798	.4	225.32
98 R/L	MR768718-7	.4	225.32
99-00 R	MR791675	.4	295.83
L	MR791673	.4	295.83

2001-02

DE Model

Man Window

R	MR791675	.4	295.83
L	MR791673	.4	295.83
R	MR791671	.4	295.83
L	MR791669	.4	295.83

Pwr Windows

R	MR791675	.4	295.83
L	MR791673	.4	295.83

LS Model

Beige

Man Window

99 R	MR791676	.4	270.27
L	MR791674	.4	270.27
97-98 R	MR761797	.4	225.32
L	MR761796	.4	229.82
99-02 R	MR791672	.4	275.65
L	MR791670	.4	275.65

Black/Gray

Man Window

97-98 R/L	MR768718-7	.4	225.32
97-98 R	MR768716	.4	225.32
I	MR768714	.4	225.32

Blue/Black

Man Window

99-02 R	MR791675	.4	295.83
L	MR791673	.4	295.83
99-02 R	MR791671	.4	295.83
L	MR791669	.4	295.83

Sedan

DE, ES Model

w/Fabric

97-98 R/L	MR768710-09	.4	225.32
99-01 R	MR791663	.4	295.83
L	MR790624	.4	275.65
R/L	MR356208-7	.4	153.78

w/o Fabric

LS Model

Beige

Man Window

99-01 R	MR791664	.4	270.27
L	MR790625	.4	270.27
98 R/L	MR780956-5	.4	216.14
99-01 R	MR791668	.4	295.83

Gray

Man Window

97-98 R/L	MR768710-09	.4	225.32
99-01 R	MR791663	.4	295.83
L	MR790624	.4	275.65

Order by Application

2 Clip, Trim Panel (a)

Coupe (13/Side)

R/L	MU481245	1.23
-----	----------	------

Sedan (20/Side)

R/L	MU481245	1.23
-----	----------	------

3 Core, Upper Door

Coupe

R/L	MR240022-1	7.27
-----	------------	------

Sedan

R	MR240024	7.27
L	MR240023	6.92

4 Core, Lower Door

Coupe

R/L	MR240018-7	10.63
-----	------------	-------

Sedan

R/L	MR240020-19	10.05
-----	-------------	-------

5 Pull, Door

Man Windows

R/L	MR761751	4.68
-----	----------	------

Beige

R/L	MR748393	4.73
-----	----------	------

Black

R/L	MR748394	4.73
-----	----------	------

Gray

6 Pwr Windows

Coupe

R	MR761822	11.60
---	----------	-------

Beige

L	MR761820	12.75
---	----------	-------

Black

R	MR761821	11.60
---	----------	-------

Gray

L	MR761819	12.75
---	----------	-------

Sedan

R	MR780963	11.50
---	----------	-------

Beige

L	MR780962	12.67
---	----------	-------

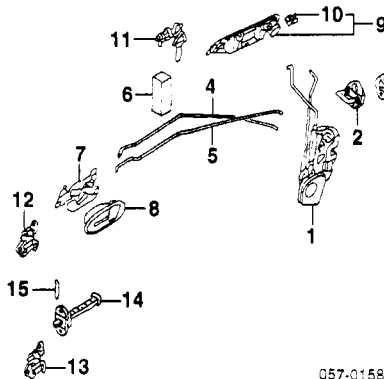
Gray	R	MR761824	11.60
	L	MR761823	12.75
7 Bracket, Door Pull	R/L	MR227598	2.85
8 Nut, Pull Brkt (3/Side)	R/L	MS480009	.98
9 Speaker, Radio	R/L	MR172418	#.2 64.72
10 Hsg, Speaker	R/L	MB629131	#.2 10.68

#R&R One Side Complete, w/Trim Panel Removed, Not Included in R&R Trim Panel

HARDWARE

Refinish Outside Handle	R/L	.4
Refinish Upper Hinge	R/L	.2
Refinish Lower Hinge	R/L	.2
R&I Outside Handle	R/L	#.6

#Includes R&I Trim Panel



057-01581

1 Latch, Door

Coupe

Man Window

R/L	MR264569-8	#.6	37.82
-----	------------	-----	-------

Pwr Window

R	MR264572	#.6	121.22
L	MR264570	#.6	121.22

Sedan

Man Window

R/L	MR264553-2	#.6	37.82
-----	------------	-----	-------

Pwr Window

R	MR264556	#.6	121.22
L	MR264554	#.6	121.22

#w/Trim Panel Removed, Includes R&R Outside Handle

2 Striker

Man Window

R/L	MB867059	.2	7.97
-----	----------	----	------

3 Shim, Striker

Man Window

R/L	MB888461	1.97
-----	----------	------

4 Rod, Lock

Coupe

R/L	MR186810-09	3.93
-----	-------------	------

Sedan

R/L	MR200458-7	3.93
-----	------------	------

5 Rod, Inside Handle

Coupe

R	MR186806	3.93
---	----------	------

Sedan

R	MR186807	3.88
L	MR200454	3.93
L	MR200455	3.88
R/L	MB134382	1.13

6 Cushion, Lock Rod

Beige

R/L	MR761759-8	#.2	14.95
-----	------------	-----	-------

Black

R	MR748074	#.2	14.95
L	MR748072	#.2	14.95
L	MR748075	#.2	14.95
L	MR748073	#.2	14.95
98-01 R	MR415331	#.2	14.95
L	MR415316	#.2	14.95

7 Handle, Inside

Gray

97 R	MR748075	#.2	14.95
L	MR748073	#.2	14.95
98-01 R	MR415331	#.2	14.95
L	MR415316	#.2	14.95

8 Bezel, Inside Handle

Beige

R/L	MR761763-2	#.2	4.10
-----	------------	-----	------

Black

R	MR748082	#.2	4.13
L	MR748080	#.2	4.13
L	MR748083	#.2	4.13
R	MR748081	#.2	4.13

Gray

R	MR748083	#.2	4.13
L	MR748081	#.2	4.13

#R&R One Side Complete, w/Trim Panel Removed

9 Handle Assy, Outside

DE, ES Model

Black (Code X08)

R/L	MR271868-7	#.3	29.30
-----	------------	-----	-------

Blue

Code T73

98 R	MR610089	#.3	54.58
------	----------	-----	-------

Code T38

L	MR610085	#.3	54.58
---	----------	-----	-------

Brown (Code C86)

99-02 R	MR610072	#.3	54.58
L	MR610068	#.3	57.63

Gold (Code K86)

99-01 R	MR610073	#.3	54.58
L	MR610069	#.3	54.58
L	MR610093	#.3	54.58

Green Metallic

Code F89

97 R	MR610097	#.3	55.67
L	MR610094	#.3	54.58

Code F26

R	MR616148	#.3	62.98
L	MR616144	#.3	62.98

Green Pearl (Code G13)

98-01 R	MR794410	#.3	54.58
L	MR794407	#.3	55.67

Red

Code P85

R	MR774416	#.3	54.58
L	MR610067	#.3	57.63

Code P78

R	MR774415	#.3	54.58
L	MR774406	#.3	54.58

Code R20

R/L	MR625078-7	#.3	61.30
-----	------------	-----	-------

Silver (Code A69)

R	MR775469	#.3	54.58
L	MR775468	#.3	45.52

White

Code W83

R	MR610071	#.3	57.63
L	MR610067	#.3	57.63

Code W13

01-02 R/L	MR625691-0	#.3	61.30
-----------	------------	-----	-------

LS Model				
Black (Code X08)	97-98 R	MR748123	#.3	55.67
	L	MR748120	#.3	57.63
	99-00 R	MR774412	#.3	55.67
	L	MR774403	#.3	57.63
	01 R	MR526780	#.3	61.30
	L	MR271867	#.3	29.30

Blue				
Code T73	97-98 R	MR756058	#.3	54.58
	L	MR756056	#.3	54.58
Code T38	99-01 R	MR610072	#.3	54.58
	L	MR610068	#.3	57.63

Brown				
Code C86	99 R/L	MR791643-2	#.3	54.58
Code C86	00 R	MR610073	#.3	54.58
	L	MR610069	#.3	54.58
Gold (Code K86)	97-98 R/L	MR760836-5	#.3	54.58

Green Metallic	</
----------------	----

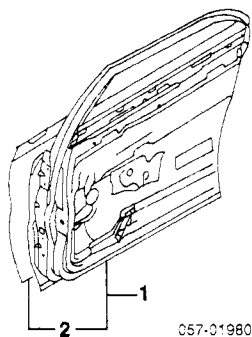
1 Glass, Door				
Mitsubishi	R/L	MR236668-7	1.0	130.48
Coupe	R/L	MR236666-5	1.0	127.42
Sedan				
NAGS-Green	R/L	FD20181-2GTN	1.0	325.35
Coupe	R/L	FD20186-7GTN	1.0	292.80
Sedan	R/L	MB517810		2.72
2 Holder, Glass (2/Side)				
3 Channel, Glass Run				
Coupe	R/L	MR503062-1	#.1	34.30
Sedan	R/L	MR287810-09	#.1	37.88
#w/Glass Removed				
4 Sash, Lower				
Coupe				
1997				
To 10-96	R/L	MB827370-69		8.82
From 11-96	R/L	MR349658-7		8.20
1998-02	R/L	MR349658-7		8.20
Sedan				
1997				
To 10-96	R/L	MB819524-3		8.82
From 11-96	R/L	MR349660-59		8.20
1998-01	R/L	MR349660-59		8.20
5 Moulding, Outer Belt				
Coupe	R/L	MR186334-3	#.2	22.13
Sedan	R/L	MR184662-1	#.2	23.77
#w/Trim Panel Removed				
6 Moulding, Inner Belt				
Coupe	R/L	MR186494-3		12.33
Sedan	R/L	MR186492-1		12.33
Regulator, Window				
7 Man Window				
Coupe	R/L	MR186314-3	#1.2	49.07
Sedan	R/L	MR184018-7	#1.2	50.30
8 Pwr Window				
Coupe	R	MR186734	#1.4	40.00
	L	MR186733	#1.4	42.93
Sedan	R/L	MR200310-09	#1.4	42.93
#Includes R&R Door Glass				
9 Handle Assy, Regulator				
Beige	R/L	MR761749		8.58
Black	R/L	MB766474		10.25
Gray	R/L	MR732133		8.48
10 Cover, Handle				
Beige	R/L	MR761750		1.48
Black	R/L	MB766475		1.53
Gray	R/L	MR732134		1.72
	R/L	MR165425		.73
11 Clip, Handle				
#Included w/Regulator Handle Assy				
12 Motor, Regulator				
	R/L	MR186736-5	#1.4	121.20
#Includes R&R Door Glass & Regulator				

REAR DOOR

Use Procedure Explanations 16 and 28 with the following text.

SHEET METAL

Refinish Door Outside	R/L	2.0
Add for Jamb & Interior	R/L	1.0
Add for Jamb	R/L	.5
R&I Door Assy	R/L	.6
Add to R&I Door Assy or R&R Door Repair Panel		
w/Power Windows	R/L	.3
Add to R&R Door Shell		
w/Power Windows	R/L	.5



1 Shell Assy, Door				
Man Window	97-99 R/L	MR273816-5	2.7	425.00
	00-01 R/L	MR273814-3	2.7	425.00
Pwr Window	R/L	MR273814-3	2.7	425.00
2 Panel, Door Repair	R/L	MR208862-1	#5.0	153.55
#Included w/Door Shell Assy				
#Includes R&R Door Glass				

INTERIOR TRIM

R&I Trim Panel	R/L	.3
----------------	-----	----

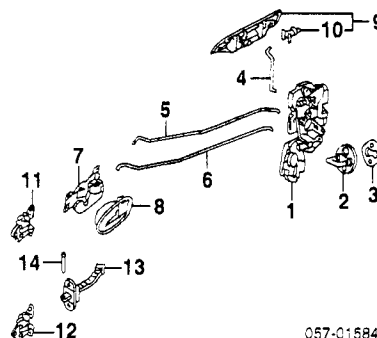
NOTE: All Parts in this section are included in R&R Trim Panel unless noted otherwise.

1 Panel Assy, Trim				
DE, ES Model				
w/Fabric	97-98 R	MR768720	.4	141.57
	L	MR768719	.4	124.38
	99-01 R	MR791677	.4	162.15
	L	MR790626	.4	120.18
w/o Fabric	97-99 R/L	MR748369-8	.4	103.45
	01 R/L	MR748369-8	.4	103.45
LS Model				
Beige				
Man Window	97-98 R	MR780958	.4	139.45
	L	MR780957	.4	116.68
	99 R	MR791678	.4	158.98
	L	MR790627	.4	116.68
	00-01 R	MR791682	.4	157.43
	L	MR791680	.4	152.87
Pwr Window	97-98 R	MR780960	.4	139.45
	L	MR780959	.4	116.68
	99-01 R	MR791682	.4	157.43
	L	MR791680	.4	152.87
Gray				
Man Window	97-98 R	MR768720	.4	141.57
	L	MR768719	.4	124.38
	99 R	MR791677	.4	162.15
	L	MR790626	.4	120.18
	00-01 R	MR791681	.4	157.43
	L	MR791679	.4	157.43
Pwr Window	97-98 R	MR768722	.4	137.88
	L	MR768721	.4	124.38
	99-01 R	MR791681	.4	157.43
	L	MR791679	.4	157.43
2 Clip, Trim Panel (a)				
11/Side	R/L	MU481245		1.23
(a) Included w/Trim Panel Assy				
3 Core, Upper Door				
	R	MR240012		6.50
	L	MR240011		6.67
4 Core, Lower Door				
	R	MR240016		6.50
	L	MR240015		6.83
5 Pull, Door				
Beige	R/L	MR761751		4.68
Gray	R/L	MR748394		4.73
6 Bracket, Door Pull	R/L	MB817180		2.95
7 Nut, Pull Brkt (3/Side)	R/L	MS480009		.98
8 Panel, Switch				
Pwr Window				
Beige	R/L	MR780964		7.95
Gray	R/L	MR748439		6.92

HARDWARE

Refinish Outside Handle	R/L	.4
Refinish Upper Hinge	R/L	.2
Refinish Lower Hinge	R/L	.2
R&I Outside Handle	R/L	#.6

#Includes R&I Trim Panel



1 Latch, Door				
Man Window	R/L	MR264574-3	#.6	38.77
Pwr Window	R/L	MR264576-5	#.6	124.22
#w/Trim Panel Removed, Includes R&R Outside Handle				
2 Striker	R/L	MB867059	.2	7.97
3 Shim, Striker	R/L	MB888461		1.97
#Use as Required				

4 Rod, Outside Handle				
	R/L	MR200632-1		3.12
5 Rod, Lock				
	R/L	MR200636-5		3.93
6 Rod, Inside Handle				
	R/L	MR200634-3		3.93
7 Handle, Inside				
Beige	R/L	MR761759-8	#.2	14.95
Gray	97 R	MR748075	#.2	14.95
	L	MR748073	#.2	14.95
	98-01 R	MR415331	#.2	14.95
	L	MR415316	#.2	14.95
8 Bezel, Inside Handle				
Beige	R/L	MR761763-2	#.2	4.10
Gray	R	MR748083	#.2	4.13
	L	MR748081	#.2	4.13
#R&R One Side Complete, w/Trim Panel Removed				
9 Handle Assy, Outer				
DE Model	R/L	MR271872-1	#.3	28.55
ES Model				
Black (Code X08)	R/L	MR271872-1	#.3	28.55
Blue (Code T38)	R	MR610082	#.3	54.58
	L	MR610077	#.3	54.58
Brown (Code C86)	R	MR610083	#.3	54.58
	L	MR610078	#.3	54.58
Gold (Code K86)	R	MR610102	#.3	54.58
	L	MR610099	#.3	54.58
Green Metallic (Code F89)	R	MR610103	#.3	55.67
	L	MR610100	#.3	54.58
Green Pearl (Code G13)	R	MR610076	#.3	54.58
	L	MR610081	#.3	54.58
Red				
Code P85	R	MR774434	#.3	54.58
	L	MR774425	#.3	54.58
Code P78	R	MR774433	#.3	54.58
	L	MR774424	#.3	54.58
Silver (Code A69)	R/L	MR775471-0	#.3	54.58
White				
Code W83	R	MR610080	#.3	54.58
	L	MR610075	#.3	54.58
Code W13	01 R/L	MR625693-2	#.3	61.30
LS Model				
Black (Code X08)	97-99 R	MR748118	#.3	55.67
	L	MR748116	#.3	46.88
	00-01 R	MR774421	#.3	46.88
	L	MR774430	#.3	55.67
Blue (Code T38)	99-01 R	MR782184	#.3	54.58
	L	MR782182	#.3	54.58
Brown (Code C86)	99-00 R/L	MR791641-0	#.3	54.58
Gold (Code K86)	97 R	MR760833	#.3	54.58
	L	MR760725	#.3	54.58
Green Metallic (Code F89)	R	MR610103	#.3	55.67
	L	MR610100	#.3	54.58
Green Pearl				
Code G84	R	MR610101	#.3	54.58
	L	MR753171	#.3	55.67
Code G13	R	MR610081	#.3	54.58
	L	MR610076	#.3	54.58
Red				
Code P85	R	MR753180	#.3	54.58
	L	MR753175	#.3	54.58
Code P78	R	MR753179	#.3	54.58
	L	MR753174	#.3	54.58
Silver (Code A69)	R	MR753177	#.3	54.58
	L	MR753172	#.3	54.58
White				
Code W83	R	MR748117	#.3	54.58
	L	MR610075	#.3	54.58
Code W13	01 R/L	MR625693-2	#.3	61.30
#w/Trim Panel Removed				
10 Lock, Snap (a)				
	R/L	MU481090-1		.70
(a) Included w/Outside Handle Assy				
11 Hinge, Upper				
	R/L	MB546472-1	#.2	29.50
12 Hinge, Lower				
	R	MB819362	#.2	25.23
	L	MB819361	#.2	25.00
#w/Door Removed				
13 Check, Door				
	R/L	MR248283	#.2	9.55
#w/Trim Panel Removed				
14 Pin, Door Check				
	R/L	MB632510		.97
Weatherstrip, Door				
On Door	R	MR184730	.4	33.82
	L	MR184729	.4	30.93
On Body				
Beige	R/L	MR288743	.2	19.92
Gray	R/L	MR184695	.2	20.22

GLASS & PARTS

R&I Outer Belt Mldg	R/L	#.5
---------------------	-----	-----

#Includes R&I Trim Panel

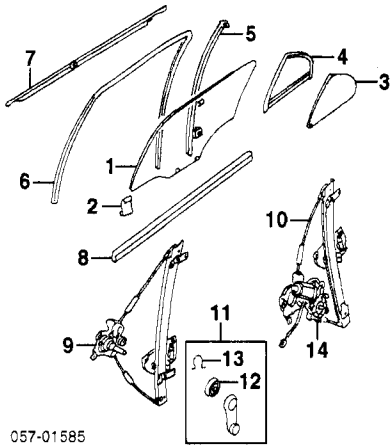
Illustration Located in Next Column

1	Glass, Door			
	Mitsubishi	R/L	MR236670-69	.8 110.52
	NAGS-Green	R/L	FD20188-9GTN	.8 229.00
2	Holder, Glass (2/Side)	R/L	MB517810	2.72
3	Glass, Vent			
	Mitsubishi	R/L	MR236672-1	#1.0 30.83
	NAGS-Green	R/L	FV20190-1GTN	#1.0 154.15
4	W/Strip, Vent Glass	R/L	MR184726-5	#1.0 13.50
5	Sash	R/L	MR184640-39	#1.0 23.97
	#R&R One Side Complete, Includes R&R Door Glass			
6	Channel, Glass Run	R/L	MR287814-3	#1.1 39.03
	#w/Glass Removed			
7	Mldg, Outer Belt	R/L	MR184664-3	#.2 23.77
	#w/Trim Panel Removed			

MITSUBISHI MIRAGE 1997-02

REAR DOOR Cont'd

GLASS & PARTS Cont'd



057-01585

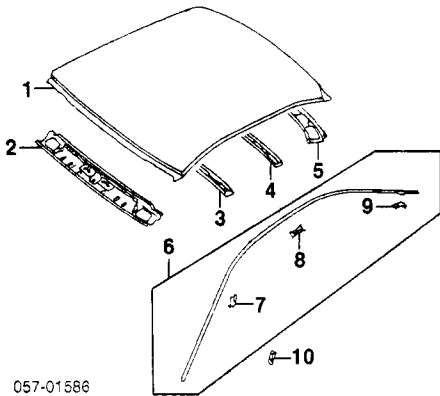
8 Mldg, Inner Belt Regulator, Window	R/L	MR186632-1	10.38
9 Man Window	R	MR184682	#1.2 42.30
	L	MR473349	#1.2 42.30
10 Pwr Window	R/L	MR200608-7	#1.4 42.30
#Includes R&R Door Glass			
11 Handle Assy, Regulator			
Beige	R/L	MR761749	8.58
Gray	R/L	MR732133	8.48
12 Cover, Handle			
Beige	R/L	MR761750	1.48
Gray	R/L	MR732134	1.72
13 Clip, Handle	R/L	MA165425	.73
#Included w/Regulator Handle Assy			
14 Motor, Regulator	R/L	MR200612-1	#1.4 121.20
#Includes R&R Door Glass & Regulator			

ROOF

Use Procedure Explanations 17 and 28 with the following text.

SHEET METAL/EXTERIOR TRIM

Refinish Roof Outside		2.3
Coupe		2.4
Sedan		2.4
R&I Drip Moulding Assy	R/L	.2



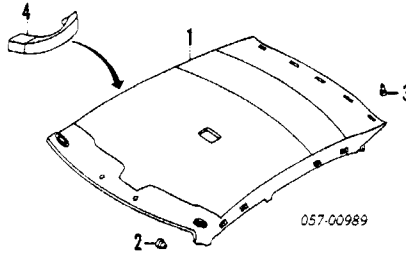
057-01586

1 Panel, Roof			
Coupe			
1997	MR208837	18.0	320.73
1998-02			
w/Sunroof	MR376466	19.5	394.67
w/o Sunroof	MR208837	18.0	320.73
Sedan			
w/Sunroof	MR208834	16.5	320.73
w/o Sunroof	MR208833	15.0	320.73
2 Panel, Front Header	MR208838	1.0	41.22
3 Bow, Front			
w/o Sunroof	MR208840	.5	33.82
4 Bow, Center			
Coupe			
w/o Sunroof	MR241744	.5	33.82
Sedan	MR241810	.5	33.82
5 Panel, Rear Header			
Coupe	MR208843	1.0	31.37
Sedan	MR208842	1.0	31.37
6 Moulding Assy, Drip			
Coupe	R/L	MR191504-3	.2 46.78
Sedan	R	MR191506	.2 45.65
	L	MR191505	.2 46.78

Clip, Drip Mldg			
7 Front (2/Side)	R/L	MB814154	1.55
8 Center (8/Side)	R/L	MR191500	1.22
9 Rear (2/Side)	R/L	MB814157	.97
#Included w/Drip Moulding Assy			
10 Clip, Attach (6/Side)	R/L	MB814152	.97

INTERIOR TRIM

R&I Headliner			
w/Sunroof		1.2	
w/o Sunroof		1.0	

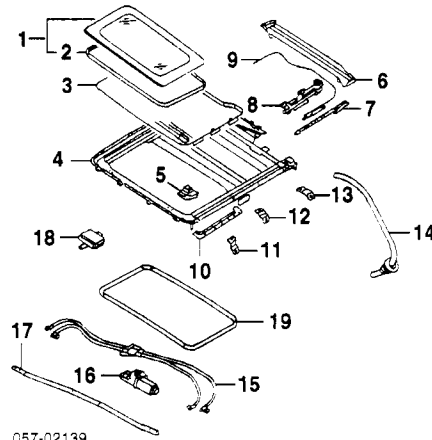


1 Headliner			
Coupe			
DE Model	MR330026	1.0	210.65
LS Model			
Beige			
w/Sunroof	98-02	MR777626	1.2 256.15
w/o Sunroof		MR330027	1.0 210.65
Gray			
w/Sunroof	98-02	MR777625	1.2 262.55
w/o Sunroof		MR330028	1.0 210.65
Sedan			
DE, ES Model	MR330023	1.0	210.65
LS Model			
Beige			
w/Sunroof	98-01	MR780941	1.2 262.55
w/o Sunroof	98-01	MR780940	1.0 262.55
Gray			
w/Sunroof		MR330029	1.2 200.15
w/o Sunroof		MR330024	1.0 210.65
2 Clip, Retainer (6)			
Beige		MB796935	1.20
Gray		MB643846	.52
4 Handle, Assist			
Right (2)		MB361330	14.15
Left		MR330021	14.55
#Gray listed, Order by Application			

SUNROOF

O/H Sunroof Assy		#3.0
#Includes R&I/R&R Headliner		

NOTE: All Parts in this section are included in overhaul unless noted otherwise.



057-02139

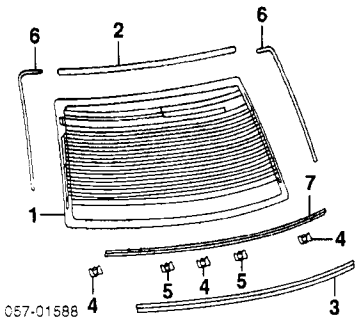
1 Glass Assy, Sunroof			
Coupe	MR328715	.7	394.67
Sedan	MR200415	.7	394.67
2 W/Strip, Sunroof	MR384850		54.87
#Included w/Sunroof Glass Assy			
3 Sunshade			
Coupe			
Beige	MR384834	1.0	270.11
Gray	MR384833	1.0	270.11
Sedan			
Beige	MR784658	1.0	277.35
Gray	MR784655	1.0	287.40
4 Frame, Sunroof			
Coupe	MR384818	#3.0	320.00
Sedan	MR264790	#3.0	251.76
#Includes R&I/R&R Headliner			
5 Cover, Rail			
Sedan	R/L	MR264793-4	3.80

6 Rail, Rear			
Coupe		MR384836	47.10
Sedan		MR264805	35.97
7 Link, Lifter			
Coupe	R/L	MR384892-1	11.05
Sedan	R/L	MR264806-7	8.58
8 Guide			
Coupe	R/L	MR384888-7	25.12
Sedan	R/L	MR264795-6	44.33
9 Slider			
Coupe	R/L	MR384890-89	30.10
Sedan	R/L	MR264799-800	44.35
10 Plate, Cover	R/L	MR200418-7	15.32
#Bracket, Sunroof Frame (2/Side)			
11 Front			
Coupe (2/Side)	R/L	MR376467	3.80
Sedan	R/L	MR273334-3	2.98
12 Center			
Coupe	R/L	MR376469	3.80
Sedan	R/L	MR273331	2.98
13 Rear			
Coupe	R/L	MR376468	3.80
Sedan	R/L	MR273335	2.98
14 Hose, Drain			
Coupe			
Front	R/L	MR341992	9.48
Rear	R/L	MB507679	11.37
Sedan			
Front	R/L	MB507679	11.37
Rear	R/L	MB507679	11.37
#Cut to Fit			
15 Regulator, Sunroof			
Coupe		MR384824	#3.0 96.34
Sedan		MR264792	#3.0 79.92
#Includes R&I/R&R Headliner			
16 Motor, Sunroof			
Coupe		MR384825	239.12
Sedan		MR264510	193.20
17 Frame, Sunroof Rear			
Coupe		MR384819	20.37
18 Unit, Control			
Coupe	97-98	MR341987	95.40
	99-02	MR462568	211.92
Sedan	97-98	MR412958	0.00
	99-01	MR462569	202.47
19 Welt, Sunroof			
Coupe			
Beige		MR778419	37.92
Gray		MR778418	37.92
Sedan			
Beige		MR780965	35.80
Gray		MR240475	28.90

BACK WINDOW

Use Procedure Explanation 19 with the following text.

R&I Back Window Glass		#2.3
#Includes Clean Up Old Adhesive as Necessary		



057-01588

1 Glass, Back Window			
Mitsubishi-Green			
Coupe	MR191581	#2.0	446.22
Sedan	MR191570	#2.0	387.12
NAGS-Green			
Coupe	FB20185GTN	#2.0	1142.00
Sedan	FB20192GTN	#2.0	992.65
#Includes Clean Up Old Adhesive as Necessary			
2 Mldg, Upper Reveal			
Coupe	MR191591	.3	6.83
Sedan	MR191592	.3	7.05
3 Mldg, Lower Reveal	MR191509	.3	17.78
4 Clip, Lower Mldg (3)	MB814176		1.20
5 Spacer, Lower Mldg (2)	MB814156		1.20
#Dam, Glass			
6 Side	R/L	MB292508	20.58
7 Lower		MB292508	20.58
#Cut to Fit			

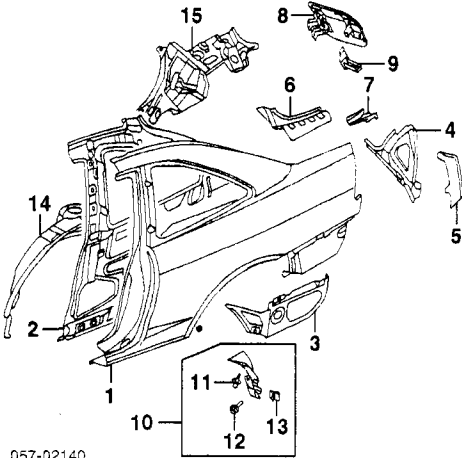
QUARTER PANEL

Use Procedure Explanations 20 and 28 with the following text.

SHEET METAL COUPE

Refinish Quarter Outside	R/L	2.4
Add for Pillar	R/L	.5
Add to Edge Panel	R/L	.5

Refinish Lamp Hsg Panel	R/L	#.5
Refinish Fuel Door		#.4
#Included in Refinish Quarter Panel		
R&R Both Quarter Panels		26.5
R&R Roof & Both Quarter Panels		
w/Sunroof		40.0
w/o Sunroof		38.5
R&R Rear Body Panel & Both Quarter Panels		28.7
R&R Roof, Both Quarters & Rear Body Panel		
w/Sunroof		42.2
w/o Sunroof		40.7
Add to R&R Quarter Panel		
To R&I Quarter Glass	R/L	.2
To R&I Back Glass		.3
w/Side Air Dam	R/L	.5



057-02140

1 Panel, Outer Quarter			
w/Side Air Dam	R	MR296704	#15.5 346.62
	L	MR296703	#14.5 346.62
w/o Side Air Dam	R	MR273804	#15.5 346.62
	L	MR273803	#14.5 346.62

#Deduct 4.0 w/Roof Removed, Deduction Includes Common Surfaces & Included Operations

2 Panel, Inner Quarter			
1997			
w/Sunroof	R/L	MR376464-3	s 5.5 298.37
w/o Sunroof	R/L	MR208804-3	s 5.5 238.80
1998-02	R/L	MR391558-7	s 5.5 298.12

3 Brace, Side			
97-98 R		MB835952	1.5 19.40
L		MR208811	1.5 18.27
99-02 R		MR439617	1.5 21.88
L		MR208811	1.5 18.27

4 Panel, Lamp Hsg			
#w/Quarter Panel Removed			
5 Extension, Corner	R/L	MR208828-7	9.00
6 Extension, Upper	R/L	MR208818-7	1.0 17.10
7 Extension, Lower	R/L	MR208820-19	5.47

8 Door, Fuel	R	MR208874	.3 22.68
9 Latch, Fuel Door	R	MB827697	.2 6.62
10 Shield Assy, Splash	R/L	MR241362-1	.2 6.00
11 Clip (a)	R/L	MB344728	1.30

(a) As Required			
12 Bolt (2/Side)	R/L	MS452348	1.00
13 Grommet (2/Side)	R/L	MR200110	.55

#Included w/Splash Shield Assy			
14 Panel, Wheelhouse	R/L	MR208810-09	s 2.5 75.63
15 Brace, Parcel Shelf	R/L	MR208816-5	77.55

**SHEET METAL
SEDAN**

Refinish Quarter Outside	R/L	2.1
Add for Pillar	R/L	.5
Add to Edge Panel	R/L	.5
Refinish Lamp Hsg Panel	R/L	#.5
Refinish Fuel Door		#.4

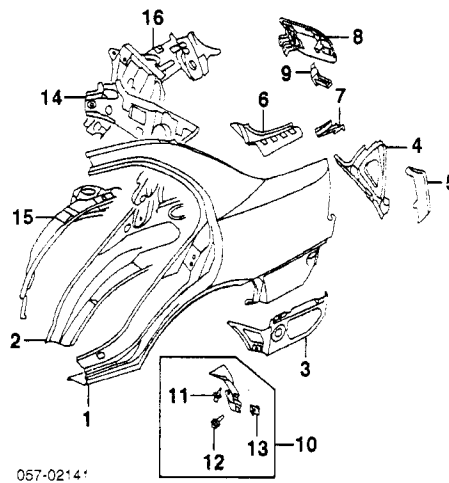
#Included in Refinish Quarter Panel

R&R Both Quarter Panels		22.5
R&R Roof & Both Quarter Panels		
w/Sunroof		35.0
w/o Sunroof		33.5

R&R Rear Body Panel & Both Quarter Panels		24.7
R&R Roof, Both Quarters & Rear Body Panel		
w/Sunroof		37.2
w/o Sunroof		35.7
Add to R&R Quarter Panel		
To R&I Back Glass		.3

Illustration Located in Next Column

1 Panel, Outer Quarter			
R	MR208758	#13.5	346.62
L	MR208757	#12.5	346.62
#Deduct 3.0 w/Roof Removed, Deduction Includes Common Surfaces & Included Operations			
2 Panel, Inner Quarter			
R	MR208800	4.0	74.50
L	MR208799	4.0	74.50



057-02141

3 Brace, Side			
97-98 R		MB835952	1.5 19.40
L		MR208811	1.5 18.27
99-01 R		MR439617	1.5 21.88
L		MR208811	1.5 18.27
R/L		MR208824-3	#1.5 22.13

4 Panel, Lamp Hsg			
#w/Quarter Panel Removed			
5 Extension, Corner	R/L	MR208828-7	9.00
6 Extension, Upper	R/L	MR208818-7	1.0 17.10
7 Extension, Lower	R/L	MR208820-19	5.47

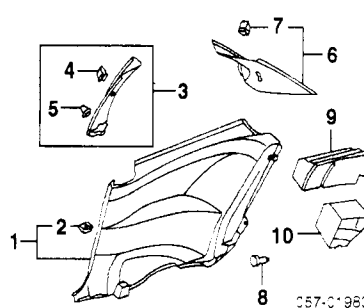
8 Door, Fuel	R	MR208873	.3 22.68
9 Latch, Fuel Door	R	MB827697	.2 6.62
10 Shield Assy, Splash	R/L	MR241362-1	.2 6.00
11 Clip (a)	R/L	MB344728	1.30

(a) Use as Required			
12 Bolt (2/Side)	R/L	MS452348	1.00
13 Grommet (2/Side)	R/L	MR200110	.55

#Included w/Splash Shield Assy			
14 Pillar, Inner	R	MR208806	1.5 50.45
w/Sunroof	L	MR208805	1.5 62.93
97 R		MR208806	1.5 50.45
L		MR208805	1.5 62.93
98-01 R/L		MR391554-3	1.5 62.93

15 Panel, Wheelhouse	R/L	MR208808-7	s 2.5 75.63
16 Brace, Parcel Shelf	R/L	MR208816-5	77.55

**INTERIOR TRIM
COUPE, SEDAN**



057-01983

1 Panel Assy, Lwr Trim			
Coupe			
Beige	97-99 R	MR308745	#.7 62.33
	L	MR308743	#.7 62.33
00-02 R		MR506893	#.7 78.90
L		MR506891	#.7 78.90
Black	97-99 R	MR308746	#.7 62.33
	L	MR308744	#.7 62.33
00-02 R		MR506894	#.7 72.52
L		MR506892	#.7 78.90

#Includes R&I Rear Seat Assy			
2 Retainer (5/Side)	R/L	MU470013	.95

#Included w/Lower Panel Assy			
3 Panel Assy, Frt Trim			
Coupe			
Beige	R/L	MR770629-8	.2 15.12
Gray	R/L	MR755727-6	.2 9.73

4 Clip (2/Side)	R/L	MU470013	.95
5 Grommet (2/Side)	R/L	MR240561	.37

#Included w/Frt Trim Panel Assy			
6 Panel Assy, Upper Trim			
Coupe			
Beige	R/L	MR770631-0	.2 22.45
Gray	R	MR308742	.2 15.85
L		MR308740	.2 15.85

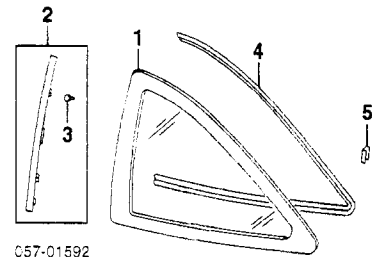
Sedan			
Beige	R/L	MR780949-8	.2 25.07
Gray	R/L	MR748309-8	.2 10.10

#Included w/Upper Trim Panel Assy			
7 Clip, Upr Trim Panel (5/Side)	R/L	MU470013	.95

8 Retainer (2/Side)			
Beige	R/L	MR298536	1.12
Black	R/L	MR218280	1.12
9 Core, Qtr Upper Coupe			
R		MR240006	8.35
L		MR240005	7.96
10 Core, Qtr Lower Coupe			
R/L		MR240010-09	9.63

QUARTER GLASS

R&I Quarter Glass R/L #2.4
#Includes Clean Up Old Adhesive as Necessary



057-01592

1 Glass, Quarter			
Mitsubishi	R/L	MR192614-3	#2.2 142.00
NAGS-Green	R/L	FQ20183-4GTN	#2.2 346.70

#Includes Clean Up Old Adhesive as Necessary

2 Moulding Assy, Reveal	R/L	MR191516-5	11.90
3 Clip (2/Side)	R/L	MR109498	1.53

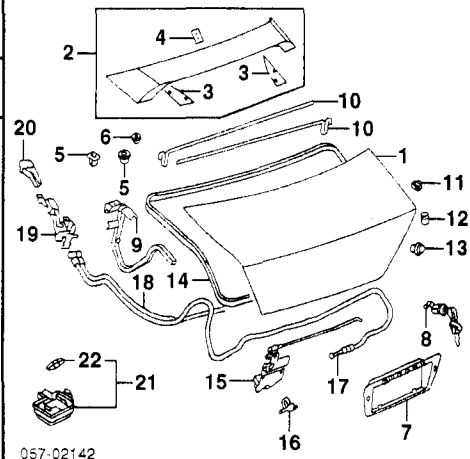
#Included w/Reveal Moulding Assy			
4 Dam, Glass			
R/L		MR192792-1	5.90

5 Fastener (2/Side)			
1997			
To 2-97	R/L	MB814446	1.40
From 3-97	R/L	MB814178	1.18
1998-02	R/L	MB814178	1.18

LUGGAGE LID

Use Procedure Explanations 24 and 28 with the following text.

Refinish Luggage Lid Outside		2.2
Add for Underside		1.1
Refinish Spoiler Assy		1.0
Refinish Hinge	R/L	.2
R&I Luggage Lid Assy		.5



057-02142

1 Lid, Luggage			
Coupe			
DE Model	97-98	MR273820	1.2 259.18
	99-02	MR476217	1.2 274.67

LS Model			
1997-98		MR273821	1.2 259.18
1999-02			
w/Spoiler		MR476218	#1.6 274.67

#Includes R&R Spoiler Assy			
w/o Spoiler		MR476217	1.2 274.67

Sedan			
DE, ES Model	97-98	MR273820	1.2 259.18
	99-01	MR476217	1.2 274.67

LS Model			
1997		MR273821	1.2 259.18
1998-01			
w/Spoiler		MR476218	#1.6 274.67

#Includes R&R Spoiler Assy			
w/o Spoiler		MR476217	1.2 274.67

2 Spoiler Assy (P)			
LS Model		MR748084	#.4 704.35

(P) Paint to Match			
#Includes R&R High Mount Stop Lamp			
3 Gasket, Side (1)	R/L	MR220526-5	3.70
4 Gasket, Center (1)		MR220528	.55

#Included w/Spoiler Assy

5 Cap, Spoiler			
Outer (3)		MB814163	1.20
Inner (2)		MB646885	.52

MITSUBISHI MIRAGE 1997-02

LUGGAGE LID Cont'd

6 Nut, Spoiler (3)	MS440502		.67
7 Panel, License Plate			
Black (Code X08)	97-98 MR245893	#.5	86.25
	99-00 MR781716	#.5	103.55
	01-02 MR621020	#.5	115.70
Blue			
Code T73	97-98 MR300011	#.5	86.25
Code T38	99-02 MR781721	#.5	103.55
Brown (Code C86)	99-00 MR791661	#.5	103.55
Gold (Code K86)	MR761907	#.5	86.25
Green Metallic			
Code F89	MR761908	#.5	86.25
Code F26	MR636097	#.5	115.55
Green Pearl			
Code G84	97 MR245888	#.5	86.25
Code G13	98 MR777466	#.5	84.97
	99-01 MR781720	#.5	103.55
Red			
Code P85	97-98 MR245891	#.5	86.25
	99-02 MR781719	#.5	103.55
Code P78	97-98 MR245889	#.5	86.25
	99-00 MR781718	#.5	103.55
Code R20	MR625293	#.5	117.20
Silver (Code A69)	97-98 MR245886	#.5	86.25
	99-01 MR782105	#.5	103.55
White			
Code W83	97-98 MR245892	#.5	86.25
	99-02 MR781715	#.5	103.55
Code W13	01-02 MR625907	#.5	117.20
#Includes R&R License Lamps			
8 Cylinder & Key	MR286178	.2	21.50
9 Hinge	R/L MR208881	#.3	26.42
#w/Luggage Lid & Parcel Shelf Trim Removed			
10 Bar, Upper Torison			
Coupe			
DE Model	R/L MR280112-1	.3	27.08
LS Model			
w/Spoiler	R/L MR280114-3	.3	27.70
w/o Spoiler	R/L MR280112-1	.3	27.08
Sedan			
w/Spoiler	R/L MR280114-3	.3	27.70
w/o Spoiler	R/L MR280112-1	.3	27.08
11 Plug, Luggage Lid	R/L MU670031	.88	
12 Bumper, Rubber	R/L MB926555	1.83	
13 Grommet, Luggage Lid	R/L MB344630	1.28	
14 Weatherstrip	MR200327	.3	51.73
15 Latch			
DE, ES Model			
w/Cargo Lamp	97-98 MR200365	.3	19.83
	99-02 MR599670	.3	103.93
	97-98 MR200366	.3	19.68
w/o Cargo Lamp	99-01 MR462886	.3	21.88
LS Model	97-98 MR200365	.3	19.83
	99-01 MR462885	.3	21.35
	MB197499	.3	7.25
16 Striker			
17 Cable, Lid Release			
Coupe	97-01 MR200372	1.0	14.45
	02 MR599673	1.0	18.97
Sedan	MR184629	1.0	14.45
18 Cable, Fuel Door Release			
Coupe	MR200374	1.2	11.57
Sedan	MR184630	1.2	11.57
19 Handle, Release	MB402131	10.88	
20 Knob, Release	MB402317	1.75	
21 Lamp Assy, Cargo	MS29091	11.47	
22 Bulb	MS820071	2.38	
#Included w/Cargo Lamp Assy			

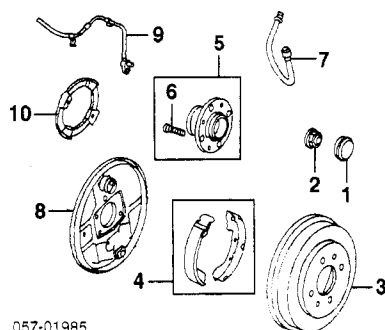
REAR SUSPENSION

Use Procedure Explanation 23 with the following text.

R&L Suspension (One Side)	R/Lm 2.3
O/H Suspension (Includes R&L)	
One Side	R/Lm 3.7
Both Sides	m 7.2
Adjust Four Wheel Alignment	m 2.1
Adjust Rear Alignment	m 1.6
Bleed Brake System	
w/ABS	m .6
w/o ABS	m .3

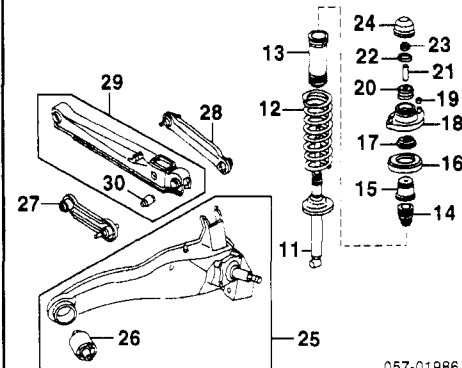
NOTE 1: R&L/R&R or O/H Does Not include alignment or bleed brake system.

NOTE 2: All Parts in this section are included in overhaul unless noted otherwise.



057-01985

1 Cap, Dust	R/L MB809360	1.37	
2 Nut, Lock	R/L MB584600	6.52	
3 Drum, Brake	97 R/L MB699291	m #.3	100.78
	98-02 R/L MR334026	m #.3	83.67
#R&R Both Sides .5			
4 Shoe Set, Brake	MR344164	m #1.4	49.92
#Includes R&R Brake Drums			
5 Hub Assy			
DE, ES Model	R/L MB844919	m #.7	98.70
LS Model			
w/ABS	R/L MR223284	m #.7	77.40
w/o ABS	R/L MB844919	m #.7	98.70
#R&R Both Sides 1.2, Includes R&R Brake Drum			
6 Stud, Wheel (4/Side)	R/L MB303869	m #.2	1.80
#Included w/Hub Assy			
#w/Drum Removed			
7 Hose, Brake	R/L MR129787	m #.3	12.90
#w/Backing Plate Removed Deduct .2			
8 Plate, Backing			
DE, ES Model	97-00 R/L MR205230-29	m #.2	46.47
	01-02 R/L MR569179-8	m #.2	58.23
LS Model			
w/ABS	97-99 R/L MR289853-2	m #.2	34.47
	00-02 R/L MR569181-0	m #.2	59.18
w/o ABS	97-99 R/L MR205230-29	m #.2	46.47
	00-02 R/L MR569179-8	m #.2	58.23
#Order by Application			
#w/Hub & Brake Shoes Removed			
9 Sensor, Rear ABS-See ABS/Brakes Section			
10 Ring, ABS Sensor-See ABS/Brakes Section			

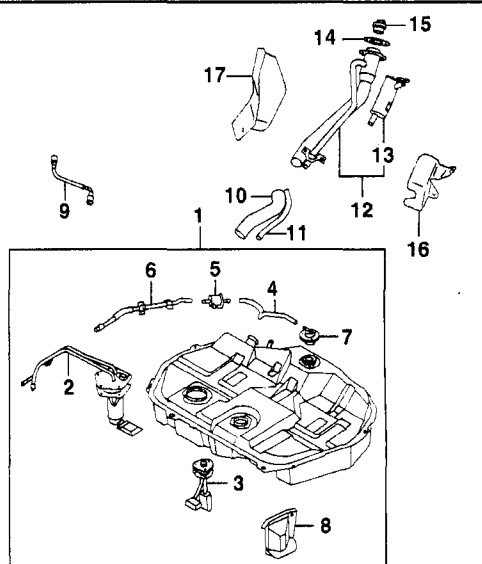


057-01986

11 Absorber, Shock	R/L MR403040	m #1.3	75.53
12 Spring, Coil			
Coupe	97-99 R/L MB871085	m #1.3	58.72
	00-02 R/L MR403023	m #1.3	65.12
Sedan	97-99 R/L MB809276	m #1.3	61.78
	00-01 R/L MR403024	m #1.3	69.45
#Order by Application			
13 Cover, Dust	R/L MB809284	m #1.3	5.22
14 Damper	97-99 R/L MB809285	m #1.3	11.62
	00-02 R/L MR403783	m #1.3	19.70
15 Cup, Absorber	R/L MB809281	m #1.3	5.43
16 Pad, Spring	R/L MB809280	m #1.3	7.22
17 Bushing, Lower Spring	R/L MR130230	m #1.3	2.02
#Order by Application			
18 Insulator, Shock	R/L MB910847	m #1.3	43.63
#R&R One Side Complete, R&R Both Sides 2.4			
#w/Trailing Arm Removed Deduct .7			
19 Nut, Insulator (2/Side)	R/L MF434105	1.17	
20 Bushing, Spring Upper			
Coupe	97-99 R/L MR223332	1.88	
	00-02 R/L MR130231	2.02	
Sedan	R/L MB515579	2.02	
21 Spacer	R/L MB871748	1.72	
22 Washer	R/L MB242360	1.77	
23 Nut, Mounting	R/L MS440002	1.60	
24 Cap, Dust	R/L MR244209	2.02	
25 Arm Assy, Trailing	R/L MR297388	m #2.6	223.80
#R&R Both Sides 5.0, Includes R&R Hub Assy			
26 Bushing, Arm	R/L MR102063	m #.3	21.53
#Included w/Trailing Arm Assy			
#w/Trailing Arm Removed, Not Included in O/H			
27 Link, Assist	97-99 R/L MR491348	m #.6	28.73
	L MB809222	m #.6	30.07
	00-02 R/L MR491348	m #.6	28.73
	L MR491347	m #.6	30.07
28 Arm, Upper	97-99 R/L MR491346-5	m #.6	45.92
	00-02 R/L MR491346-5	m #.6	45.92
29 Arm Assy, Lwr Control			
DE, ES Model	R/L MR197284	m #1.9	44.33
LS Model	R/L MB809231-0	m #1.9	49.13
#w/Trailing Arm Removed Deduct .3			
30 Bushing, Arm			
2/Side	R/L MR403464	m #.2	8.63
#Included w/Lwr Control Arm Assy			
#w/Lower Control Arm Removed, Not Included in O/H			

FUEL TANK

NOTE: R&R Does Not include drain fuel.



057-02143

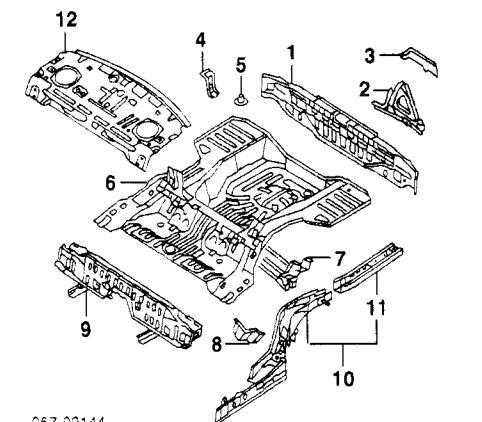
1 Tank Assy, Fuel	97 MR134947	m 2.2	710.87
	98 MR271821	m 2.2	700.23
	99-02 MR342734	m 2.2	806.28
2 Pump, Fuel	97 MR241351	m #1.8	335.47
	98-02 MR376042	m #1.8	335.47
3 Gauge, Tank Unit	MR135469	m #.7	30.48
#Included in R&R Fuel Tank			
4 Hose, Fuel Valve			
1997 (a)	MS642596		38.18
1998	MR342552		5.63
1999-02 (3)	MU602666		10.43
(a) Cut to Fit			
5 Valve, Fuel Vapor	97 MR239350		12.05
6 Tube, Fuel Tank	MB248236		1.08
7 Valve, Fuel Tank Safety	97-98 MR526922		28.32
	99-02 MR342687		27.72
8 Protector, Fuel Tank	MR134834		26.33
#Included w/Fuel Tank Assy			
9 Hose, High Pressure	MR340095		23.47
10 Hose, Fuel Filler	97 MB908026	#1.3	17.03
	98 MR271850	#1.3	14.03
	99-02 MR342736	#1.3	15.80
11 Hose, Fuel Filler Vent	97 MR135022	#1.3	4.98
	98 MR271851	#1.3	4.75
	99-02 MR342737	#1.3	6.25
12 Pipe Assy, Filler	97 MR134967	#1.3	27.22
	98 MR271820	#1.3	36.18
	99-02 MR342448	#1.3	30.30
13 Separator, Vapor	99-02 MR342453	#1.3	32.37
#Included w/Filler Pipe Assy			
#R&R Complete, w/Fuel Tank Removed			
14 Gasket, Filler Pipe	MB554982		1.93
15 Cap, Filler	97 MR271611		11.93
	98 MR342325		13.23
	99-02 MR462818		13.23
Protector, Filler Pipe			
16 Inner	99-02 MR342464		15.48
17 Outer	99-02 MR342648		6.08

REAR BODY

Use Procedure Explanations 26 and 28 with the following text.

SHEET METAL

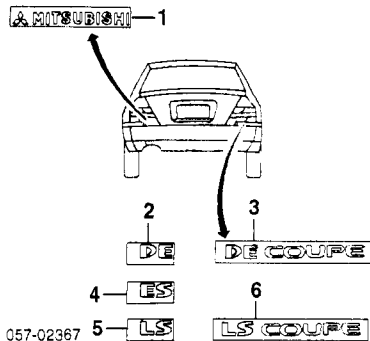
Refinish Rear Body Panel	1.5
Add for Edge & Interior	.8
Refinish Rear Floor Pan	1.5



057-02144

1 Panel, Rear Body	MR273807	#6.0	167.32
#Deduct 1.9 w/Quarter Panel Removed, Deduction Includes Common Surfaces & Included Operations			
2 Panel, Lamp Hsg-See Quarter Panel Section			
3 Extension, Corner-See Quarter Panel Section			
4 Brace, Jack	MB291005		10.42
5 Bracket, Spare Tire	MR178542		4.73
6 Pan, Rear Floor			
Coupe	MR241296	#16.0	503.57
Sedan	MR208883	#16.0	523.95
#w/Rear Body Panel Removed, Includes R&R Jack Bracket, Spare Tire Bracket, Fuel Tank Bracket & Rear Floor Crossmember, Deduct 2.0 for Each Wheelhouse Panel Removed			
7 Crossmember, Rear Floor	MR208887		127.42
8 Bracket, Fuel Tank	R/L MB835846-5		29.28
9 Extension, Rear Floor	MR273749		199.42
10 Sidemember Assy, Rear Floor			
Coupe	97-98 R MR273756	s #6.0	273.24
	L MR273755	s #6.0	274.58
	99-02 R MR439615	s #6.0	300.85
	L MR273755	s #6.0	274.58
Sedan	97-98 R/L MR273754-3	s #6.0	247.38
	99 R MR439614	s #6.0	314.87
	L MR273753	s #6.0	247.38
	00-01 R MR439614	s #6.0	314.87
	L MR496579	s #6.0	348.92
#w/Rear Floor Pan Removed Deduct 3.0			
11 Ext, Sidemember	97-98 R MR273758	s	38.12
	L MR273757	s	40.92
	99-02 R MR439616	s	73.75
	L MR273757	s	40.92
†Included w/Rear Floor Sidemember Assy			
12 Shelf, Parcel	MR273806	5.0	134.07

EXTERIOR TRIM



1 Nameplate (Adhesive)			
"Mitsubishi"			
Gray/Silver	MR971574HB	.2	18.55
Red/Gray	MB952387	.2	21.40
Red/Silver	MB952388	.2	21.40
Silver/Gray	MR971574HA	.2	18.55
Decal			
2 "DE"	MR768734	.2	8.43
Silver	MR768735	.2	8.43
3 "DE COUPE"			
Gray	MR361837	.2	8.30
Silver	MR361838	.2	8.30
4 "ES"			
Gray	MR300196	.2	8.43
Silver	MR300197	.2	8.20
5 "LS"			
Gray	MR300198	.2	7.57
Silver	MR300199	.2	7.57
6 "LS COUPE"			
Gray	MR361839	.2	7.48
Silver	MR361840	.2	7.48

INTERIOR TRIM

Illustration Located in Next Column

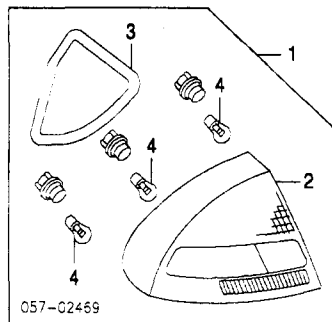
1 Trim, Rear End	MR190153	.3	31.13
2 Cover Assy, Rear Trim	MR189981	.2	17.18
3 Clip, Rear Trim Cover† (4)	MU481245		1.23
†Included w/Rear Trim Cover Assy			
4 Trim, Side	R/L MR190152-1	.4	53.30
5 Clip, Side Trim (5/Side)	97-98 R/L MB779749		1.17
	99-02 R/L MR732132		.97
6 Cover, Trunk	97-99 MR190283		50.70
	00-01 MR506812		58.97
7 Trim Assy, Parcel Shelf†			
Coupe			
DE Model	97-99 MR767705	#1.0	78.33
	00-02 MR550098	#1.0	85.43
LS Model			
Beige	97-00 MR768708	#1.0	78.33
	01-02 MR550099	#1.0	85.43
Black	97-00 MR768707	#1.0	78.33
	01-02 MR550098	#1.0	85.43

Sedan			
DE, ES Model	MR308729	#1.0	78.33
LS Model			
Beige	MR780950	#1.0	96.80
Gray	MR308730	#1.0	78.33
†Order by Application			
#Includes R&I Rear Seat Assy, R&R Quarter Uptr Trim Panels & Speakers			
8 Cap, Shelf Trim (a) (3)			
Beige	MR330152		1.82
Black	MR330151		1.82
Gray	MR330150		1.85
9 Clip, Parcel Shelf (a) (4)	MR240458		.35
(a) Included w/Parcel Shelf Trim Assy			
10 Grille, Speaker			
Beige	R/L MR761825	.2	22.70
Black	R/L MR748440	.2	22.80
Gray	R/L MR748441	.2	22.80
11 Trim, Shelf Frt			
Beige	MR761840		17.00
Black	MR759713		17.10
Gray	MR755777		16.26
12 Trim, Seat Back			
Beige	R MR761753		22.03
	L MR761752		21.38
Black	R/L MR759700-699		24.02
Gray	R/L MR755723-2		24.02
13 Board, Partition	MR115309		19.60
14 Speaker	R/L MR142014	#.5	67.95
#Includes R&R Speaker Grille			

REAR LAMPS

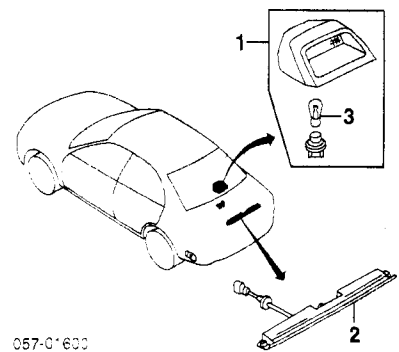
COMBINATION LAMP

R&I Combination Lamp Assy	R/L	#.4
#Includes R&R Rear End Trim		



1 Lamp Assy, Comb	97-98 R/L MR296300-299	#.4	136.48
	99-02 R/L MR414890-89	#.4	151.70
2 Lens & Housing†	97-98 R/L MR300276-5	#.4	122.88
	99-02 R/L MR388354-3	#.4	143.77
#Includes R&R Rear End Trim			
3 Gasket†	97-98 R/L MR221882		6.78
	99-02 R/L MR388316		9.82
4 Bulb†			
Single Element (2/Side)	R/L AL001156	#.2	1.43
Dual Element	R/L AL002057	#.2	1.28
†Included w/Comb Lamp Assy			
#R&R One or All			

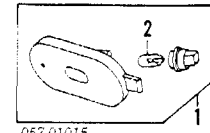
HIGH MOUNT STOP LAMP



Lamp Assy, Stop			
1 Parcel Shelf Mount			
Coupe	MR761826	.3	58.33
Sedan			
Beige	98-01 MR780966	.3	58.33
Gray	MR748058	.3	58.33
2 Spoiler Mount	MB848485	.3	151.70
3 Bulb†	MS820044	.2	2.92
†Included w/Shelf Mount Stop Lamp Assy			

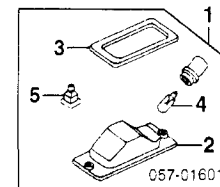
SIDE MARKER LAMP

R&I Side Marker Lamp Assy	R/L	#.2
#Included in R&R or O/H Rear Bumper		



1 Lamp Assy, Side Marker	R/L MB821201	#.2	10.12
#Included in R&R or O/H Rear Bumper			
2 Bulb†	R/L AL000194	.2	.77
†Included w/Side Marker Lamp Assy			

LICENSE LAMP



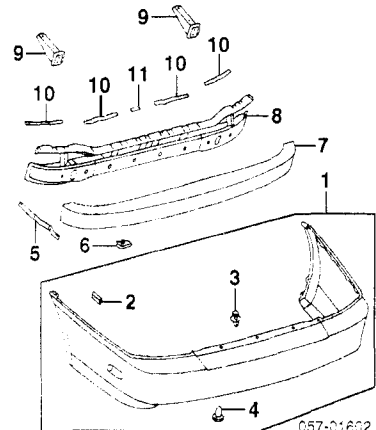
1 Lamp Assy, License	R/L MB912956	#.2	28.45
2 Lens & Body†	R/L MB859364	#.2	12.93
#Included in R&R Luggage Lid			
3 Gasket†	R/L MB859365		2.00
4 Bulb†	R/L AL000194	.2	.77
5 Grommet† (2/Side)	R/L MS480001		.95
†Included w/License Lamp Assy			

REAR BUMPER

Use Procedure Explanations 27 and 28 with the following text.

Refinish Rear Cover	2.2
R&I Bumper Assy	1.0
O/H Bumper Assy (Includes R&I)	1.9

NOTE: All Parts in this section are included in overhaul unless noted otherwise.



1 Cover Assy, Rear (P)	MR296318	1.9	209.72
------------------------	----------	-----	--------

REAR BUMPER Cont'd

(P) Paint to Match			
2 Clip (4/Side)	R/L	MR288200	1.05
3 Retainer (4)		MR200300	.98
4 Retainer (2)			
1997			
To 6-1-96		MB271999	1.05
From 6-2-96		MB403435	2.72
1998-02		MB403435	2.72
Included w/Rear Cover Assy			
5 Brkt, Side Support	R/L	MR287600	5.83
6 Clip/Nut	R/L	MB481588	1.58
7 Absorber, Impact		MR184917	IOH 61.18
8 Bar, Reinforcement		MR186201	IOH 145.55
9 Bracket, Mounting	R/L	MB867781	IOH 31.88
Pad, Bumper			
10 Side (2/Side)	R/L	MR328147	1.38
11 Center		MR328148	.55

MITSUBISHI MIRAGE 1993-96

SECTION INDEX

A/C Refrigerant Capacities.....	151
ABS/Brakes.....	153
Air Bag System.....	153
Air Cleaner.....	156
Air Conditioning/Heater.....	151
Back Window.....	160
Center Console.....	157
Clear Coat Identification.....	150
Cooling.....	151
Cowl & Dash.....	156
Cruise Control System.....	153
Electrical.....	156
Emission System.....	156
Engine.....	155
Engine/Trans Mounts.....	155
Exhaust.....	156
Floor.....	158
Front Bumper.....	150
Front Door.....	158
Front Drive Axle.....	154
Front Fender.....	152
Front Inner Structure.....	152
Front Lamps.....	150
Front Steering Linkage/Gear.....	154
Front Suspension.....	154
Fuel Tank.....	162
Grille.....	150
Hood.....	151
Information Labels.....	150
Instrument Panel.....	156
Luggage Lid.....	161
Paint Code Location.....	150
Quarter Glass.....	161
Quarter Panel.....	161
Rear Body.....	162
Rear Bumper.....	163
Rear Door.....	159
Rear Lamps.....	163
Rear Seat.....	158
Rear Suspension.....	162
Rocker/Pillars/Floor.....	157
Roof.....	160
Seat.....	158
Seat Belts.....	158
Special Cautions.....	150
Steering Pump.....	155
Steering Wheel/Column.....	155
Underhood Dimensions.....	152
Wheel.....	153
Windshield.....	156

SPECIAL CAUTIONS

AIR BAG

Refer to Procedure Explanation 29 for Supplemental Restraint/Air Bag Special Cautions.

PAINT CODE LOCATION

Paint code located on firewall.

CLEAR COAT IDENTIFICATION

All metallics and pearls are clear coat.

INFORMATION LABELS

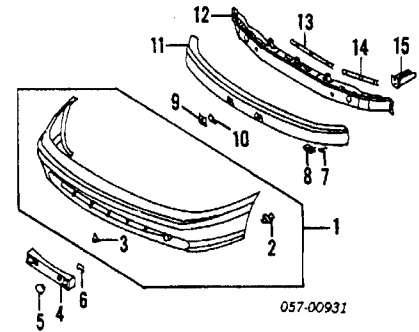
Emission			
1.5L Eng	MD188553		2.97
1.8L Eng	MD188622		2.18
Service			
1.5L Eng	MD188798		4.08
1.8L Eng	MD191674		2.15
Order by Application			
A/C Refrigerant Caution	MR147645		2.32
Auto Trans Shift Lock	MB580890		1.47
Tire Pressure			
1.5L Eng	93 MB910332		1.13
	94-96 MR103098		1.17
1.8L Eng	93 MB910333		1.17
	94-96 MR130494		1.32
Air Bag Caution	MB682049		3.05
Air Bag Info	MB891604		3.47
Unleaded Fuel	MB348422		7.38
Service Points	MB892513		2.15

FRONT BUMPER

Use Procedure Explanations 1 and 28 with the following text.

Refinish Front Cover Assy.....	2.0
R&I Bumper Assy.....	.6
O/H Bumper Assy (Includes R&I).....	1.4

NOTE: All Parts in this section are included in overhaul unless noted otherwise.



1 Cover Assy, Front

Coupe			
Gray	MB945838	1.2	219.13
Painted (P)	MB945838	1.2	219.13
Sedan			
Gray	MB912889	1.2	219.13
White	MB912889	1.2	219.13
Painted (P)	MB912889	1.2	219.13

(P) Paint to Match			
2 Clip, Side	R/L	MB253964	1.42
3 Clip, Lower (5)		MB271999	1.05

Included w/Front Cover Assy			
Garnish, License Plate			
Coupe	MB867698	#.3	8.90
Sedan	MB867697	#.3	12.35
5 Grommet	R/L MU480007	#.3	1.00
6 Retainer	R/L MB403256	#.3	4.08

#R&R Complete			
7 Pad, Cover	R/L MB575451		.95
8 Fastener	R/L MB481588		1.58
9 Brkt, Garnish	R/L MR311004		1.30
10 Clip, Brkt	R/L MB325299	IOH	.58

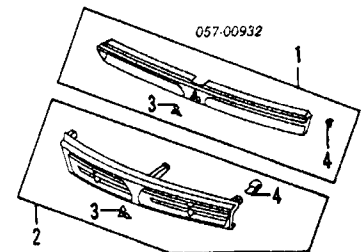
11 Absorber, Impact			
Coupe	MB867633	IOH	61.82
Sedan	MB867631	IOH	57.77

12 Reinf, Cover			
Coupe	MB935805		187.25
Sedan	MR138358		185.42

13 Retainer, Center			
	MB867680		7.50
14 Retainer, Side	R/L MB867685		6.65
15 Brkt, Mounting	R/L MB867662-1		29.63

GRILLE

Refinish Grille.....	.6
R&I Grille.....	.1



Grille Assy

1 Coupe			
S Model	MB696842	#.2	51.18
ES, LS Model (P)	MB976304	#.2	52.92
2 Sedan			
S Model	MB799003	#.2	81.52
ES, LS Model (P)	MB799003	#.2	81.52

(P) Paint to Match			
3 Emblem			
Coupe (3)	MB880148	#.2	2.77
Sedan	MB619311	#.2	16.15

#Included in R&R Grille			
4 Clip, Grille			
Coupe (3)	MB083120	#	.73
Sedan (6)	MB153825	#	.97

Included w/Grille Assy
#Included in R&R Grille

FRONT LAMPS

HEADLAMP COUPE

R&R Does Not Include Aim Lamps.....	.4
R&I Headlamp Assy.....	R/L #.5

#w/Grille Removed, Includes R&R Park/Signal Lamp