

GROUP INDEX

AIR CONDITIONER & HEATER.....	1368
CENTER PILLAR & ROCKER PANEL.....	1378
CONSOLE.....	1376
COOLING.....	1367
COWL & WINDSHIELD.....	1374
ELECTRICAL.....	1369
EMISSION SYSTEM.....	1371
ENGINE / TRANSAXLE.....	1370
EXHAUST SYSTEM.....	1371
FENDER.....	1369
FRONT BUMPER.....	1366
FRONT DOOR.....	1377

FRONT LAMPS.....	1366
FRONT SUSPENSION.....	1372
FUEL SYSTEM.....	1382
GRILLE.....	1366
HOOD.....	1369
INFORMATION LABELS.....	1366
INSTRUMENT PANEL.....	1375
INTERIOR TRIM.....	1383
PAINT IDENTIFICATION.....	1366
QUARTER PANEL.....	1380
REAR BODY & FLOOR.....	1381
REAR BUMPER.....	1383

REAR DOOR.....	1379
REAR LAMPS.....	1383
REAR SUSPENSION.....	1382
RESTRAINT SYSTEMS.....	1376
ROOF & BACK GLASS.....	1377
SEATS & TRACKS.....	1380
STEERING.....	1373
TRUNK LID.....	1381
UNDERHOOD DIAGRAM.....	1369
WHEELS.....	1371

PAINT IDENTIFICATION

ARP6212

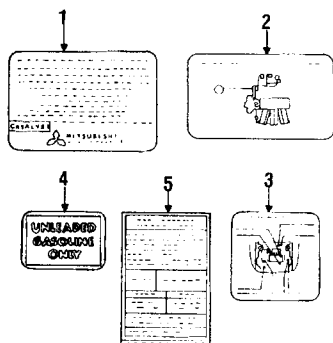
PAINT PROCESS

All metallic colors are base coat/clear coat. All non-metallic colors are single stage.

PAINT CODE IDENTIFICATION

Paint code located on firewall.

INFORMATION LABELS



6212650

OVERLAP OPERATIONS

Install all labels..... 93-96 0.3

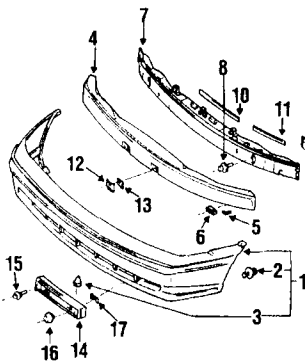
PARTS AND R&R OPERATIONS

LABELS

1 Emission label					
1.5 liter					
Federal.....	93	2.88#	0.2=	MD188 553	
California.....	93	2.88#	0.2=	MD188 554	
all.....	94	3.25#	0.2=	MD301 901	
Federal.....	95	3.00#	0.2	MD316 766	
California.....	95	3.00#	0.2	MD316 767	
Federal.....	96	2.88#	0.2	MD327 954	
California.....	96	2.88#	0.2	MD327 955	
1.8 liter					
Federal.....	93	2.13#	0.2=	MD305 427	
California.....	93	2.88#	0.2=	MD188 624	
all.....	94	3.13#	0.2=	MD309 408	
Federal.....	95	2.96#	0.2	MD312 161	
California.....	95	2.96#	0.2	MD312 162	
Federal.....	96	2.92#	0.2	MD327 659	
California.....	96	2.92#	0.2	MD327 660	
2 Label					
vacuum hose diagram					
1.5 liter Federal.....	93	3.96#	0.2=	MD188 798	
1.5 liter Californi.....	93	3.96#	0.2=	MD188 799	
1.5 liter, all.....	94	4.13#	0.2=	MD301 903	
1.5 liter Federal.....	95	4.13#	0.2	MD301 903	
1.5 liter Californi.....	95	3.00#	0.2	MD316 770	
1.5 liter, all.....	96	2.92#	0.2	MD329 111	
1.8 liter Federal.....	93	2.08#	0.2=	MD191 675	
1.8 liter Californi.....	93	2.08#	0.2=	MD191 674	
1.8 liter, all.....	94	2.08#	0.2=	MD191 674	
1.8 liter Federal.....	95	2.08#	0.2	MD191 674	
1.8 liter Californi.....	95	3.13#	0.2	MD307 544	
1.8 liter, all.....	96	2.88#	0.2	MD327 957	
service points.....	93-96	2.08#	0.2=	MB892 513	
3 Fuel label	93-96	7.21#	0.2=	MB348 422	
4 Tire info label					
1.5 liter.....	93-94	1.13#	0.2=	MB910 332	
.....	95-96	1.13#	0.2	MB910 331	
1.8 liter.....	93-95	1.13#	0.2=	MB910 333	
.....	96	#	0.2	MB130 494	
AC label	94	2.25#	0.2=	MR147 645	
Air bag label					
under hood warning.....	94	2.92#	0.2=	MB682 049	
information.....	94-96	3.29#	0.2=	MB891 604	
steering gear cautio.....	94-96	1.13#	0.2=	MB682 048	

PARTS: Order by description. LABOR: Time is for application of first label. See OVERLAP OPERATIONS.

FRONT BUMPER



6212010

OVERHAUL OPERATIONS

O/H bumper assy..... 93-96 2.0

R&I OPERATIONS

R&I bumper assy..... 93-96 1.0

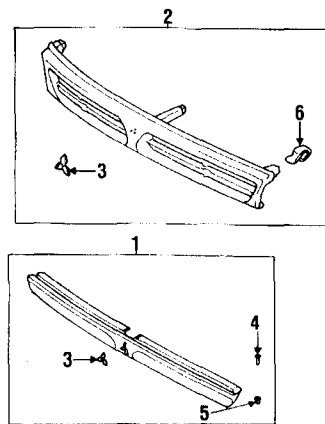
PARTS AND R&R OPERATIONS

BUMPER ASSEMBLY

1 Bumper cover					
2 door					
gray.....	(p.2.5) 93-96	211.67#	2.0	MB945 838	
gray & white.....	(p.2.5) 93-96	211.67#	2.0	MB945 838	
4 door					
gray.....	(p.2.5) 93-96	211.67#	2.0	MB912 889	
gray & white.....	(p.2.5) 93-96	211.67#	2.0	MB912 889	
2 clip					
side.....	93-96	1.38		MB253 964	
3 lower					
.....	93-96	1.00		MB271 999	
4 Core					
2 door.....	93-96	59.71#	2.0	MB867 633	
4 door.....	93-96	54.09#	2.0	MB867 631	
5 pad					
.....	93-96	.71		MB575 451	
6 grommet					
rear.....	93	1.58		MB481 588	
.....	94-96	1.67		MB369 297	
side.....	93-96	.88		MS240 129	
7 Reinforcement					
2 door.....	93-96	180.89#	2.0	MB935 805	
4 door.....	93-96	179.10#	2.0	MR138 358	
8 bolt					
front.....	93-96	.71		MS240 125	
9 stay					
.....	93-96R	28.62		MB867 662	
.....	93-96L	28.62		MB867 661	
Upper plate					
10 center.....	93-96	7.17		MB867 680	
11 side.....	93-96	6.42		MB867 685	
12 license bracket.....	93-96	1.25		MR311 004	
13 clip.....	93-96	.58		MB325 299	
14 License molding					
2 door.....	93-96	8.60	0.3=	MB867 698	
4 door.....	93-96	11.93	0.3=	MB867 697	
15 bolt.....	93-96	.33		MS240 156	
16 grommet.....	93-96	.83		MU480 007	
17 bracket.....	93-96	3.96		MB403 256	

LABOR: Time is for overhaul.

GRILLE



6212020

PARTS AND R&R OPERATIONS

GRILLE & COMPONENTS

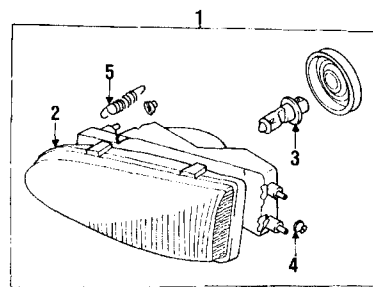
Grille assy

1 2 door					
S.....	(p.5) 93-96	49.45#	0.5	MB696 842	
ES, LS.....	(p.5) 93-96	49.45#	0.5	MB976 304	
2 4 door.....	(p.5) 93-94	78.75	0.5	MB799 003	
.....	(p.5) 95-96	78.75	0.5	MB799 003	
3 Emblem					
2 door.....	93-96	2.67#	0.2	MB880 148	
4 door.....	93-96	15.60#	0.2	MB619 311	
4 screw					
2 door.....	93-96	.33#		MF453 077	
5 grommet					
.....	93-96	.72#		MB083 120	
6 clip					
4 door.....	93-96	.72#		MB153 825	

PARTS: Order by description.

1 PARTS: Part included in grille assembly.

FRONT LAMPS



6212030

ADD IF REQUIRED

Aim headlamps..... 93-96 0.6

R&I OPERATIONS

R&I headlamp assy
one side..... 93-96B 0.5

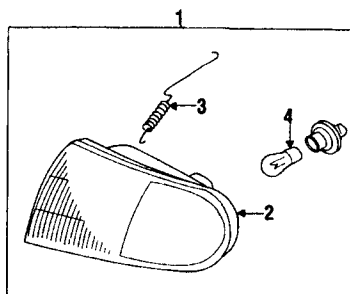
PARTS AND R&R OPERATIONS

HEADLAMPS

1 Headlamp assy					
2 door.....	93-96R	196.35	0.5=	MB912 964	
.....	93-96L	196.35	0.5=	MB912 963	
4 door.....	93-96R	196.35	0.5=	MB912 960	
.....	93-96L	196.35	0.5=	MB912 959	

2 Lens Assy				
2 door.....	93-96R	176.12#	0.5=	MR108 128
	93-96L	176.12#	0.5=	MR108 127
4 door.....	93-96R	187.63#	0.5=	MR108 124
	93-96L	185.80#	0.5=	MR108 123
3 Bulb	93-96B	12.83#	0.2	AB009 004
4 nut	93-96	.71#		MS440 133
5 Adjust spring				
2 door.....	93-96	1.58#		MR108 131

PARTS: Part Included in headlamp assembly.



6212040

SIGNAL LAMPS

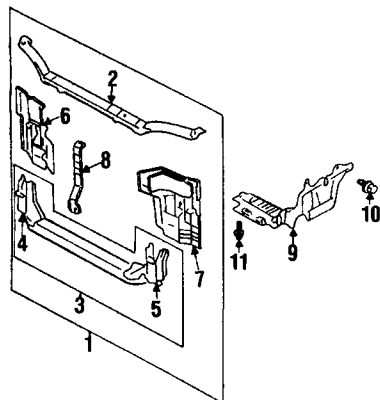
1 Signal lamp				
2 door.....	93-96R	44.58#	0.3=	MB821 052
	93-96L	44.58#	0.3=	MB821 051
4 door.....	93-96R	44.58#	0.3=	MB821 046
	93-96L	44.58#	0.3=	MB821 045
2 Lens & housing				
2 door.....	93-96R	41.78#	0.3=	MB929 464
	93-96L	41.78#	0.3=	MB929 463
4 door.....	93-96R	39.73#	0.3=	MB929 458
	93-96L	39.73#	0.3=	MB929 457
3 Spring				
2 door.....	93-96R	2.75#		MB929 466
	93-96L	2.75#		MB929 465
4 door.....	93-96R	2.75#		MB929 460
	93-96L	2.75#		MB929 459
4 Bulb	93-96	.50#		AL001 157

LABOR: After headlamp is removed.

† PARTS: Part Included in turn signal assembly. LABOR: After headlamp is removed.

‡ PARTS: Included in turn signal assembly.

COOLING



6212050

RADIATOR SUPPORT

ADD IF REQUIRED				
R&R radiator support				
aim headlamps.....	93-96		0.6	
add for AC option.....	93-96		m 0.5	
evacuate & recharge.....	93-96		m 1.4	
refrigerant recovery.....	93-96		m 0.4	
add for auto trans.....	93-96		m 0.2	
add for P/Strg.....	93-96		m 0.3	

PARTS AND R&R OPERATIONS

1 Radiator support				
2 door.....				
manual trans.....	(p.1.5) 93	235.98<s	7.0	MB907 829
auto trans.....	(p.1.5) 93	227.23<s	7.0	MB907 830
all.....	(p.1.5) 94-96	227.23<s	7.0	MB907 830
4 door, 1.5 liter.....				
manual trans.....	(p.1.5) 93	221.72<s	7.0	MB907 827

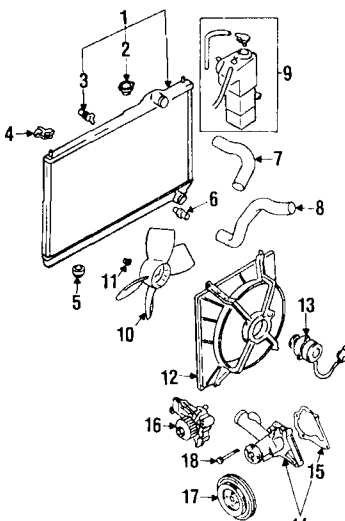
auto trans.....	(p.1.5) 93	235.98<s	7.0	MB907 828
4 door, 1.8 liter.....				
	(p.1.5) 93	235.98<s	7.0	MB907 828
	(p.1.5) 94-96	235.98<s	7.0	MB907 828
2 Upper tie bar				
2 door.....	(p.5) 93-96	54.80#	1.5	MB907 833
4 door.....	(p.5) 93-96	51.52#	1.5	MB907 832
3 Lower tie bar				
1.5 liter.....				
manual trans.....	(p.5) 93	96.63#	3.5	MR125 547
auto trans.....	(p.5) 93	97.62#	3.5	MR125 546
1.8 liter.....	(p.5) 93	97.62#	3.5	MR125 546
all.....	(p.5) 94-96	97.62#	3.5	MR125 546
4 brace				
corner.....	(p.5) 93-96R	17.90#	1.0	MB835 892
	(p.5) 93-96L	17.90#	1.0	MB835 891
5 Mount panel				
headlamp.....	(p.5) 93-96R	45.73#	1.5	MB835 890
	(p.5) 93-96L	45.73#	1.5	MB835 889
6 Stay				
center.....				
2 door.....	(p.3) 93-96	19.50	0.5	MB835 894
4 door.....	(p.3) 93-96	18.32	0.5	MB835 893
SPLASH SHIELDS				
Under cover				
engine.....	93-96R	24.12	0.5=	MB826 680
	93-96L	30.38	0.5=	MB826 679
10 bolt	93-96	.79		MS240 605
11 clip	93-96	1.38		MB547 806

† LABOR: After bumper, grille, headlamps, fenders and all necessary bolted on parts are removed.

‡ LABOR: After grille, headlamps, fenders and all necessary bolted on parts are removed.

* LABOR: Time is to R&I/R&R condenser & lines.

< LABOR: Time includes R&I/R&R of the radiator, fan shroud, both headlamps, grille, hood latch, hood stoppers, hood support rod, horns, battery, power steering oil cooler tube and D&R of fuse box, front wiring & hood release cable.



6212060

RADIATOR & COMPONENTS

OVERLAP OPERATIONS

R&R radiator hose with radiator off				
upper.....	93-96		m 0.2	
lower.....	93-96		m 0.3	

PARTS AND R&R OPERATIONS

1 Radiator				
1.5 liter, manual trans.....				
2 door.....	93	432.10#	m 1.2	MB660 558
4 door.....	93	432.10#	m 1.2	MB924 290
all.....	94-96	425.53#	m 1.2	MB660 561
1.5 liter auto trans.....	93-96	425.53#	m 1.3	MB660 561
1.8 liter.....				
manual trans.....	93	425.53#	m 1.2	MB660 561
	94-96	384.17#	m 1.2	MR127 311
auto trans.....	93	429.75#	m 1.3	MB660 567
	94-96	425.53#	m 1.2	MB890 506
2 Radiator cap				
2 door.....				
manual trans.....	93	11.27		MR481 217
auto trans.....	93	11.98		MR481 216
4 door.....	93	11.98		MR481 216
all.....	94-96	11.98		MR481 216

3 Drain plug				
2 door.....				
manual trans.....	93	2.92		MB597 891
auto trans.....	93	3.04		MB597 892
4 door.....	93	3.04		MB597 892
all.....	94-96	3.04		MB597 892
Insulator				
4 upper.....	93-96	6.29		MB660 630
5 lower.....				
1.5 liter.....	93-94	2.21		MB660 637
	95-96	2.08		MB924 990
1.8 liter man trans.....	93-96	2.08		MB924 990
1.8 liter auto tran.....	93-94	2.21		MB906 100
	95-96	2.08		MR204 334
6 Temp sensor				
2 door.....				
manual trans.....	93	39.97	m 0.4=	MB605 079
auto trans.....	93	43.45	m 0.4=	MB660 663
4 door.....	93	43.45	m 0.4=	MB660 663
all.....	94-96	43.45	m 0.4=	MB660 663
7 Upper hose				
1.5 liter.....	93-96	8.78	m 0.5=	MB845 944
1.8 liter.....	93-96	8.77	m 0.5=	MB660 601
8 Lower hose				
1.5 liter.....	93-95	14.95	m 0.6	MB660 610
1.8 liter.....				
manual trans.....	93-96	14.24	m 0.6	MB660 611
auto trans.....	93-96	14.95	m 0.6	MB660 612
9 Recovery tank	93-96	15.65	m 0.3=	MB660 620

COOLING FAN

10 Fan blade				
2 door.....				
manual trans.....	93	23.05#	m 0.7	MB890 231
auto trans.....	93	23.27#	m 0.7	MB845 072
all.....	94-96	23.27#	m 0.7	MB845 072
4 door, 1.5 liter.....				
manual trans.....	93	24.45#	m 0.7	MB605 118
auto trans.....	93	23.27#	m 0.7	MB845 072
all.....	94-96	23.27#	m 0.7	MB845 072
4 door, 1.8 liter.....				
manual trans.....	93	23.27#	m 0.7	MB845 072
	94-96	24.45#	m 0.7	MB605 118
auto trans.....	93	24.45#	m 0.7	MB605 118
	94-96	26.00#	m 0.7	MB605 002
11 nut	93-96	.33#		MB356 066
12 Shroud				
1.5 liter.....				
manual trns, 2 door.....	93	47.08#	m 0.7	MB845 115
manual trns, 4 door.....	93	46.65#	m 0.7	MB660 581
auto trans.....	93	46.65#	m 0.7	MB660 580
all models.....	94-96	46.65#	m 0.7	MB660 580
1.8 liter.....				
manual trans.....	93	46.65#	m 0.7	MB660 580
	94-96	46.65#	m 0.7	MB660 581
auto trans.....	93	47.08#	m 0.7	MB845 086
	94-96	46.62#	m 0.7	MB660 583

13 Fan motor

1.5 liter.....				
manual trns, 2 door.....	93	173.10#	m 0.7	MB845 116
manual trns, 4 door.....	93	173.10#	m 0.7	MB845 079
auto trans.....	93	172.70#	m 0.7	MB845 078
all models.....	94-96	172.70#	m 0.7	MB845 078
1.8 liter.....				
manual trans.....	93	172.70#	m 0.7	MB845 078
	94-96	189.95#	m 0.7	MB924 978
auto trans.....	93	173.10#	m 0.7	MB845 079
	94-96	196.26#	m 0.7	MR127 345

WATER PUMP

Water pump				
14 1.5 liter.....	93-96	90.45#	m 2.9	MD974 649
16 1.8 liter.....	93	93.42#	m 2.9	MD300 799
	94	93.42#	m 2.9	MD300 799
	95-96	93.42#	m 2.9	MD300 799

gasket

15 1.5 liter.....	93-96	3.13		MD171 757
-------------------	-------	------	--	-----------

17 Pulley

1.5 liter.....				
manual steering.....	93-96	24.82#	m 0.5=	MD158 217
P/S.....	93	26.27#	m 0.5=	MD192 457
	94-96	31.06#	m 0.5=	MD300 872
18 mount bolt	93-96	1.42#		MF140 239

BELTS

OVERLAP OPERATIONS

R&R all belts.....93-96 m 0.5

PARTS AND R&R OPERATIONS

Belt				
alternator.....				
1.5 liter.....	93-96	16.37	m 0.5=	MD117 356
1.8 liter.....	93-96	13.42	m 0.5=	MD163 032
AC, 1.5 liter.....	93-96	15.88	m 0.5=	MB332 253
AC, 1.8 liter.....				
w/manual steering.....	93	22.08	m 0.5=	MB877 750
	94-96	24.18	m 0.5=	MR148 513
w/P/S.....	93	29.07	m 0.5=	MB813 272
all.....	95-96	24.23	m 0.5	MB813 251

CONTINUED

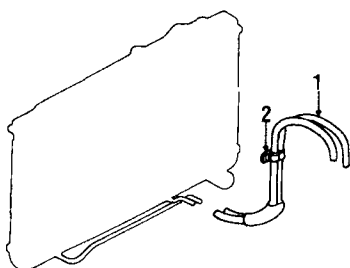
COOLING (CONT)

P/S					
1.5 liter	93	13.52	m 0.5=	MD193 591	
	94-96	13.39	m 0.5=	MD314 778	
1.8 liter	93	17.71	m 0.5=	MD188 026	
	94-96	18.95	m 0.5=	MD192 809	

PARTS: Order by description.

† LABOR: If item is made accessible by work being performed, adjust time accordingly.

‡ LABOR: Time is for overhaul.

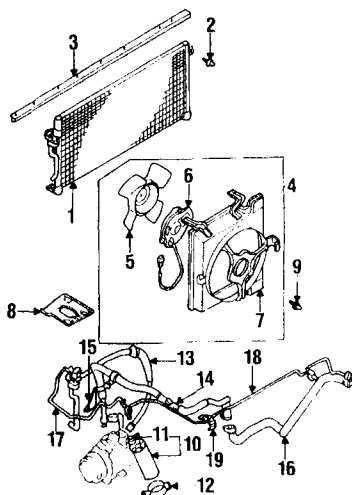


6212065

TRANS OIL COOLER

1 Oil cooler line	93-95R	19.56	m 0.5=	MR127 803
2 bracket	93-95	2.08		MB660 644

AIR CONDITIONER & HEATER



6212070

SPECIAL CAUTION

Many vehicles are now using R134 refrigerant in the AC system. Extra care must be observed when servicing this type of system. R12 refrigerant MUST NOT be used. See manufacturers service manual for specific repair procedures.

REFRIGERANT CAPACITY

R12	93	2.25 LBS
R134	94-96	1.625-1.875 LBS

ADD IF REQUIRED

With any operation requiring a refrigerant line disconnect, add AC service, i.e. evacuate, recharge and test for leaks. Add for refrigerant cost.

AC Service

evacuate & recharge	93-96	m 1.4
refrigerant recovery	93-96	m 0.4
R&R heater assy add for AC option	93-96	m 0.3

PARTS AND R&R OPERATIONS

AIR CONDITIONER

1 Condenser					
1.5 liter					
manual trans	93	315.92	m 1.5	MR115 813	
auto trans	93	431.78	m 1.5	MR115 814	
1.8 liter	93	431.78	m 1.5	MR115 814	
all	94-96	431.78	m 1.5	MR115 814	
2 bolt	93-96	.92		MS440 060	
3 Weatherstrip	93-96	4.33		MB657 979	
4 Fan assy					
1.5 liter					
manual trans	93-94	279.90#	m 0.7	MB958 016	
auto trans	93-94	312.90#	m 0.7	MB869 473	
1.8 liter	93-94	312.90#	m 0.7	MB869 473	
all	95-96	312.90#	m 0.7	MB869 473	

5 Blade					
1.5 liter					
manual trans	93	# m 0.7	MB897 437		
auto trans	93	201.96#	m 0.7	MR115 745	
1.8 liter	93	201.96#	m 0.7	MR115 745	
all	94-96	201.96#	m 0.7	MR115 745	

6 Motor					
1.5 liter					
manual trans	93	# m 0.7	MB897 451		
	94	# m 0.7	MB918 808		
auto trans	93-94	201.96#	m 0.7	MR115 745	
1.8 liter	93-94	201.96#	m 0.7	MR115 745	
all	95-96	201.96#	m 0.7	MR115 745	

7 Shroud					
1.5 liter					
manual trans	93-94	86.09#	m 0.7	MB918 805	
auto trans	93-94	68.53#	m 0.7	MB918 807	
1.8 liter	93-94	68.53#	m 0.7	MB918 807	
all	95-96	68.53#	m 0.7	MB918 807	

8 bracket					
1.5 liter	93-94	5.37†		MB657 973	
	95-96			NOT LISTED	

9 bolt					
1.5 liter	93-94	.08		MS240 121	
	95-96	1.13		MF243 623	

10 Dehydrator					
1.5 liter	93	95.97	m 1.0	MB869 218	
	94-96	99.23	m 1.0	MR270 457	
1.8 liter	93	87.57	m 1.0	MB869 217	
	94-96	113.30	m 1.0	MB898 320	

11 Pressure switch					
1.5 liter	93-94	25.95	m 0.8	MB276 842	
	95-96	26.05	m 0.8	MB813 383	
1.8 liter	93-94	21.53	m 0.8	MB630 445	
	95-96	74.97	m 0.8	MB813 384	
	93-96	19.92		MB657 984	

12 bracket					
AC hose					
discharge					
1.5 liter	93	101.13	m 1.2	MB899 482	
	94-96	94.68	m 1.2	MR117 295	
1.8 liter	93	117.06	m 1.2	MB657 986	
	94-96	138.93	m 1.2	MR117 298	

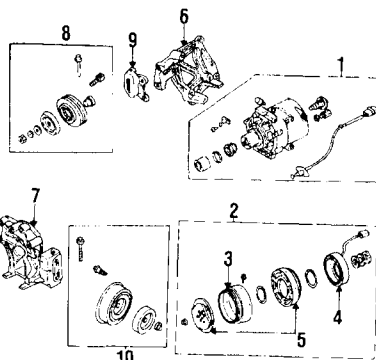
14 suction at compressor					
1.5 liter	93	122.40	m 2.0	MB899 484	
	94-96	134.47	m 2.0	MR146 440	
1.8 liter	93	134.78	m 2.0	MB877 794	
	94-96	159.18	m 2.0	MR117 307	
	93-96	14.38		MB813 216	

15 bracket					
AC hose					
suction at evap	93	60.83		MB869 475	
	94-96	55.47		MR146 489	

17 Pipe					
condensor to drier	93	48.53	m 1.2	MB657 991	
	94-96	56.25	m 1.2	MB898 321	
18 evap to receiver	93	26.76	m 1.2	MB869 477	
	94-96	29.42	m 1.2	MR146 488	
	93-96	14.59		MB877 796	

LABOR: Time is for overhaul.

† PARTS: For manual transmission applications only.



6212080

COMPRESSOR

1 Compressor assy					
1.5 liter	93	710.60	m 2.0	MB946 125	
	94-96	640.40	m 2.0	MR360 234	
1.8 liter	93	710.60	m 2.0	MR939 461	
	94-96	698.30	m 2.0	MR360 240	

6 mount bracket					
1.5 liter	93	103.47		MB568 806	
	94-96	77.40		MR148 613	
1.8 liter	93	79.24		MB813 071	
	94-96	77.41		MB958 516	

2 Clutch					
1.5 liter	93	287.72#	m 0.5=	MB947 764	
	94-96	246.90#	m 0.5=	MR360 238	
1.8 liter	93	286.72#	m 0.5=	MR939 456	
	94-96	317.83#	m 0.5=	MR360 242	

3 Pulley					
1.5 liter	93	94.83#	m 0.5=	MB630 059	
	94-96	# m 0.5=		MR918 822	
1.8 liter	93	# m 0.5=		MB939 457	
	94-96	# m 0.5=		MR168 204	

4 Coil					
1.5 liter	93	106.82#	m 0.5=	MB630 076	
	94-96	# m 0.5=		MR168 058	
1.8 liter	93	# m 0.5=		MB939 459	
	94-96	# m 0.5=		MR168 184	

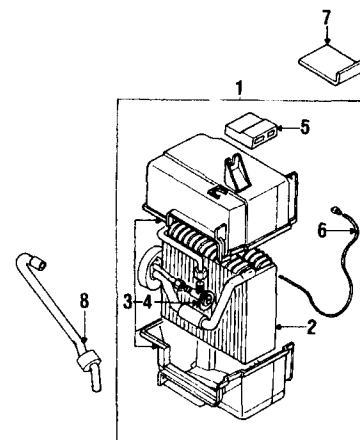
5 Rotor & armature					
1.5 liter	93	120.90		MB630 365	
	94-96			MR168 057	
1.8 liter	93			MB939 458	
	94-96			MR168 182	

8 Tension pulley					
1.5 liter	93-96	75.00	m 0.5=	MB609 127	

10 bracket					
1.5 liter	93-94	90.13†	m 0.5=	MB813 415	
	95-96	130.12†	m 0.5=	MR315 434	

LABOR: After compressor is removed.

† PARTS: Order by description.



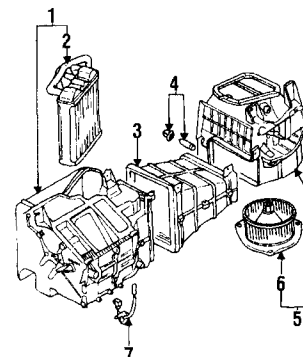
6212090

EVAPORATOR ASSEMBLY

1 Evaporator assy	93	547.45†	m 2.5	MB869 437
	94-96	352.30†	m 2.5	MR117 330
2 Core	93	366.32†	m 2.5	MB939 448
	94-96	288.65†	m 2.5	MR168 194
3 Case	93-96	83.35†	m 2.5	MB939 447
4 Expansion valve	93	53.70†	m 2.5	MB939 446
	94-96	53.68†	m 2.5	MR168 189
5 Thermostat	93	70.41†		MB939 444
	94-96	42.33†		MB918 804
6 Temp sensor	93-96	27.82†		MB918 801
7 Insulator	93	29.71		MB813 444
	94-96			NOT LISTED
8 Drain hose	93-96	14.39		MB869 438

† PARTS: Part included in evaporator assembly. LABOR: Time is for assembly or individual operations.

‡ PARTS: Part included in evaporator assembly.



6212100

HEATER

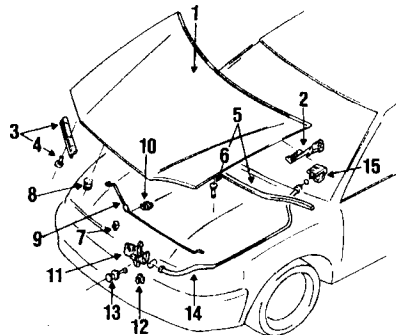
1 Heater assy					
2 door	93-96	240.95†	m 3.5	MB947 822	
4 door	93-96	237.42#	m 3.5	MB918 840	

2 Core	93-96	130.83#	m 3.5	MB939 999
3 Duct	93-94	19.32		MR168 723
	95-96	19.32		MR168 723
4 clip	93-96	1.38		MB253 964
5 Blower assy.	93-96	201.80	m 1.3	MB869 426
6 Fan & motor	93-96	176.32	m 1.3	MB918 830
7 Resistor	93-96	13.35		MB946 664

LABOR: Time is for overhaul.

† PARTS: Order by description. LABOR: Time is for overhaul.

HOOD



6212110

REFINISHING NOTES

Refn hood underside..... 93-96 p.14

R&I OPERATIONS

R&I hood assy..... 93-96 0.5

PARTS AND R&R OPERATIONS

HOOD & COMPONENTS

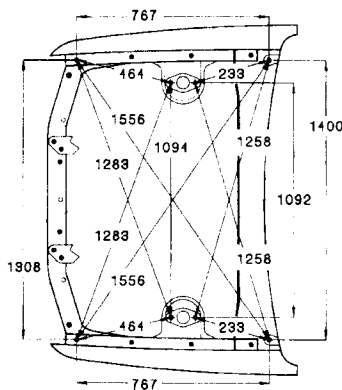
1 Hood				
2 door	(p.2.8) 93-96	245.00	1.0	MB861 655
4 door	(p.2.8) 93-96	245.00	1.0	MB861 653
2 Hinge	(p.5) 93-96R	20.89#	0.3	MB866 526
	(p.5) 93-96L	20.89#	0.3	MB866 525
Weatherstrip				
3 front				
2 door	93-96R	7.04	0.3=	MB908 004
	93-96L	7.04	0.3=	MB908 003
	93 R	6.63	0.3=	MR101 607
	93 L	6.63	0.3=	MR101 577
	94-96R	7.04	0.3	MB908 004
	94-96L	7.04	0.3	MB908 003
5 rear	93-96	7.24	0.3=	MB819 745
4 clip				
front	93-96	1.67†		MB274 778
rear	93-96	1.13†		MU481 027
Stopper				
7 inner	93-96	2.92	0.1	MB270 607
8 outer	93-96	2.46	0.1	MB270 408
9 Support rod				
2 door	93-96	16.61	0.2=	MB819 762
4 door	93-96	16.61	0.2=	MB819 741
10 clip	93-96	.75		MB889 049
grommet	93-96	.46		MB889 048
11 Latch				
2 door	93-96	19.51	0.4=	MB819 768
4 door	93-96	19.51	0.4=	MB819 738
12 clip	93-96	.33		MB011 808
13 bolt	93-96	.96		MU240 093
14 Release cable	93-96	13.10	1.0	MB819 740
15 Handle	93-96	6.58†		MB796 916

LABOR: After cowl screen is removed.

† PARTS: Order by color & description.

‡ PARTS: Part included with weatherstrip.

UNDERHOOD DIAGRAM

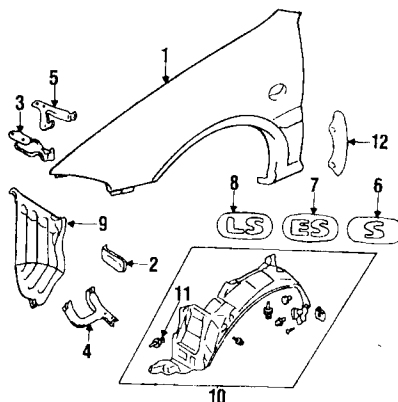


ZD30430

UNDER HOOD DIAGRAM
1993-96 MIRAGE

Refer to MOTOR "COLLISION REPAIR DATA" manual for complete vehicle dimensions. All dimensions provided are in millimeters.

FENDER



6212120

FENDER & COMPONENTS

REFINISHING NOTES

Add for stone guard if required. See Guide to Estimating.

Refn fender edges..... 93-96 p.5

OVERLAP OPERATIONS

R&R fender with bumper off deduct..... 93-96 0.5

R&I OPERATIONS

R&I fender assy..... 93-96 2.0

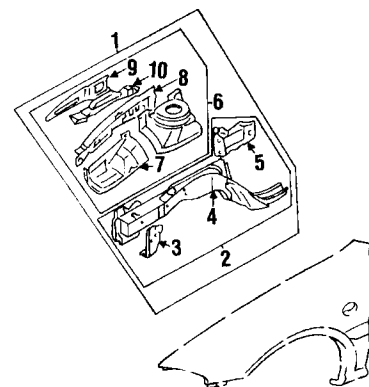
PARTS AND R&R OPERATIONS

1 Fender				
2 door	(p.2.4) 93-96R	186.67	2.5	MB861 668
	(p.2.4) 93-96L	186.67	2.5	MB861 667
4 door	(p.2.4) 93-96R	186.67	2.5	MB861 664
	(p.2.4) 93-96L	186.67	2.5	MB861 663
2 bracket	93-96R	7.04		MB861 674
3	93-96L	7.04		MB861 673
4 door	93-96R	7.04		MB861 670
5	93-96L	7.04		MB861 669
6 Nameplate	93-96	13.17#	0.2=	MR700 231
7 ES	93	14.87#	0.2=	MR700 222
	94-96	15.03#	0.2=	MR700 223
8 LS	93-96	15.03#	0.2=	MR700 216
9 End cover				
front	93	17.98†	0.2=	MB945 116
	94-96			NOT LISTED
10 Splash shield				
2 door	93-96R	24.12	0.6	MB907 178
	93-96L	24.12	0.6	MB907 177
4 door	93-96R	24.12	0.6	MB907 176
	93-96L	24.12	0.6	MB907 175
11 clip	93-96	1.29		MB344 728
12 Protector				
2 door	93-96R	11.80		MB935 304

93-96L	11.80	MB935 303
4 door 93-96R	11.80	MB935 300
93-96L	11.80	MB935 299

PARTS: Order by color & description.

† PARTS: Only applies to vehicles with 1.5 liter engine & manual transmission.



6212053

STRUCTURAL COMPONENTS & RAILS

OVERLAP OPERATIONS

R&R apron assy with rad support off..... 93-96 s 11.0

PARTS AND R&R OPERATIONS

1 Apron assy				
w/o ABS	(p.1.1) 93-94R	470.56†	s 13.0	MB945 060
	(p.1.1) 93-94L	470.56†	s 13.0	MR125 701
w/ABS	(p.1.1) 93 R	470.56†	s 13.0	MB945 060
	(p.1.1) 93 L	548.03†	s 13.0	MR125 703
	(p.1.1) 94 R	470.56†	s 13.0	MB945 060
	(p.1.1) 94 L	548.03†	s 13.0	MR125 703
all	(p.1.1) 95-96R	470.56†	s 13.0	MR125 702
	(p.1.1) 95-96L	470.56†	s 13.0	MR125 701
2 Sidemember assy	(p.1.0) 93-96R	364.55†	s 8.5	MB945 064
	(p.1.0) 93-96L	364.55†	s 8.5	MB945 063
3 gusset				
inner	93-96R	37.58		MB945 068
	93-96L	37.58		MB945 067
4 outer	93-96R	37.58		MB945 066
	93-96L	36.85		MB945 065
5 Extension				
sill to floor	93-96R	37.98		MB835 874
	93-96L	37.24		MB835 873
6 Wheelhouse assy				
w/o ABS	(p.1.1) 93 R	178.77@s	10.5	MB959 238
	(p.1.1) 93 L	175.27@s	10.5	MB959 237
w/ABS	(p.1.1) 93 R	178.77@s	10.5	MB959 238
	(p.1.1) 93 L	171.80@s	10.5	MB959 239
all	(p.1.1) 94-96R	201.48@s	10.5	MR125 706
	(p.1.1) 94-96L	201.48@s	10.5	MR125 705
7 Front panel				
w/o ABS	(p.5) 93-94R	40.09#	s 4.0	MB959 242
	(p.5) 93-94L	40.09#	s 4.0	MB959 241
w/ABS	(p.5) 93-94R	40.09#	s 4.0	MB959 242
	(p.5) 93-94L	50.05#	s 4.0	MB959 243
all	(p.5) 95-96R	40.09#	s 4.0	MB959 242
	(p.5) 95-96L	40.09#	s 4.0	MB959 241
8 Reinforcement				
inner	93-94R	35.72		MB959 232
	93-94L	35.72		MB959 231
	95-96R	35.72		MB959 232
	95-96L	35.72		MB959 231
9 outer	93-94R	24.53		MB959 230
	93-94L	24.53		MB959 229
	95-96R	40.09		MB959 242
	95-96L	24.53		MB959 229
10 lower	93-94R	17.20		MB959 228
	93-94L	18.75		MB959 227
	95-96R	17.20		MB959 228
	95-96L	18.75		MB959 227

LABOR: After bumper, headlamp, fender and all necessary bolted on parts are removed.

† LABOR: After bumper, headlamp, fender, suspension and all necessary bolted on parts are removed.

@ LABOR: After bumper, headlamp, fender and all necessary bolted on parts are removed.

ELECTRICAL

PARTS AND R&R OPERATIONS

BATTERY

Battery	93-96			NOT LISTED
Tray	93-96	11.27	0.5=	MB826 677

CONTINUED

ELECTRICAL (CONT)

Hold down bolt	93-96	5.46		MT416 980
	93-96	5.04		MB912 396
Cable assy				
1.5 liter.....	93-96	69.85	0.8	MB863 248
1.8 liter.....				
w/o ABS.....	93-94	69.15	0.8	MB863 246
w/ABS.....	93-94	67.80	0.8	MB818 593
all.....	95-96	69.15	0.8	MB863 246

ALTERNATOR

Alternator				
1.5 liter.....	93-94	238.75	0.8	M1146 20D
	95	221.50	0.8	M3093 33D
	96		0.8	MD313 473
1.8 liter.....	93	221.50	0.8	M1896 59D
	94-95	242.00	0.8	M1933 23D
	96	244.00	0.8	M1954 36D

brace

adjusting.....				
1.5 liter.....	93-96	11.85		MD119 089
1.8 liter.....	93-95	9.32		MD189 543
	96	9.97		MD303 162

Pulley

1.5 liter.....	93-94	57.70†	0.3=	MD611 779
	95-96	53.25†	0.3	MD618 753
1.8 liter.....	93-95	48.50†	0.3=	MD618 598
	96	32.26†	0.3	MD618 869

IGNITION SYSTEM

Distributor assy				
1.5 liter.....	93-95	601.17	0.8	MD325 051
	96	480.00	0.8	MD313 403
1.8 liter.....	93-95	571.45	0.8	MD180 936
	96	680.15	0.8	MD198 219

Cap

1.5 liter.....	93-95	17.38	0.3=	MD618 297
	96	30.18	0.3	MD618 977
1.8 liter.....	93-94	30.18	0.3=	MD618 977
	95-96	30.18	0.3	MD618 977

Rotor

1.5 liter.....	93-95	5.21		MD611 788
	96	16.68		MD619 273
1.8 liter.....	93-96	16.68		MD619 273

Ignition module

1.5 liter.....	93	818.80#	1.0	MD175 507
	94	800.42#	1.0	MD192 517
	95	349.77#	1.0	RMD33 2689
	96	865.49#	1.0	MD322 848
1.8 liter.....	93	869.23#	1.0	MD175 665
	94-95	796.97#	1.0	MD302 726
	96	865.49#	1.0	MD326 880

bracket

Ignition switch.....	93-96	3.38#	1.0	MB541 887
Cyl & keys.....				SEE FOOTNOTE

HORN

Horn				
low note.....	93-96	31.35	0.5=	MB530 845
high note.....	93-96	28.09	0.5=	MB530 846

ANTENNA

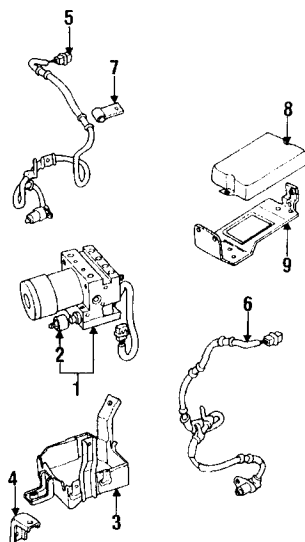
Antenna assy	@			SEE FOOTNOTE
---------------------------	---	--	--	--------------

PARTS: Order by description. Module is located at left kick panel.

† LABOR: After alternator is removed.

‡ PARTS: Part located in STEERING group.

© PARTS: Part located in COWL & WINDSHIELD group.



ABS COMPONENTS

1 Modulator	93-94	1967.04	m	1.7	MB857 737
	95-96		m	1.7	NOT LISTED
2 Insulator	93-94	56.37#			MB928 460
	95-96				NOT LISTED
bracket					
upper.....	93-94	32.96			MB857 725
lower.....	93-94	4.58			MB857 724
both.....	95-96				NOT LISTED

Sensor

5 front.....	93-94R	261.87	m	0.7	MB699 521
6.....	93-94L	256.72	m	0.7	MB699 520
	95-96		m	0.7	NOT LISTED

clasp

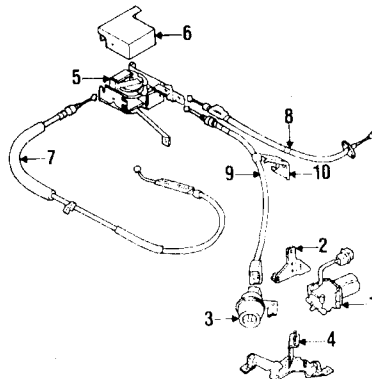
7.....	93-94	.88			MB895 146
	95-96				NOT LISTED

Rear sensor

8 E*tronic cntrl.....	93-94	2123.09	m	0.7	MB863 287
	95-96		m	0.7	NOT LISTED
9 bracket.....	93-94	6.79			MB863 291
	95-96				NOT LISTED

PARTS: Part included with modulator.

† PARTS: Part located in REAR SUSPENSION group.



6212055

CRUISE CONTROL SYSTEM

1 Vacuum pump	93-95	90.10	m	0.5=	MB666 702
	96		m	0.5	NOT LISTED
2 bracket	93-95	6.63			MB822 426
	96				NOT LISTED
3 Actuator	93-95	37.97	m	0.5=	MB822 015
	96		m	0.5	NOT LISTED
4 bracket	93-95	20.65			MB822 424
	96				NOT LISTED

cushion

5.....	93-95	6.79			MB322 032
	96				NOT LISTED

link

6.....	93-95	43.53			MB822 431
	96				NOT LISTED

Cover

7.....	93-95	14.65			MB822 433
	96				NOT LISTED

Cable

7 throttle.....	93-95	22.13	m	0.4=	MB822 441
	96		m	0.4	NOT LISTED
8 accelerator.....	93-95	22.13	m	0.4=	MB822 439
	96		m	0.4	NOT LISTED
9 actuator to link.....	93-95	22.13	m	0.4=	MB822 437
	96		m	0.4	NOT LISTED

bracket

10.....	93-95	2.17			MB921 443
	96				NOT LISTED
Cruise unit	93-96	209.49		0.8	MB666 645
bracket	93-96	4.88			MB954 201

ENGINE / TRANSAXLE

ADD IF REQUIRED

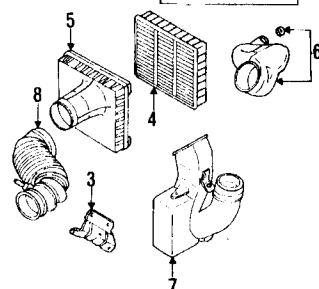
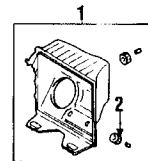
R&I engine/transaxle

add for P/Strg.....	93-96	m	0.3	
add for AC option.....	93-96	m	0.6	

R&I engine/trans assy

all models.....	93-96	m	6.5	
-----------------	-------	---	-----	--

PARTS AND R&R OPERATIONS



6212130

AIR INLET

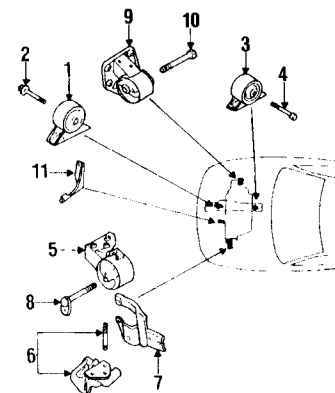
1.5 LITER

1 Body	93-96	49.98	m	0.4=	MD620 733
2 Insulator	93-96	3.25			MD620 528
3 bracket	93-96	9.08			MD168 385
4 Element	93-96	16.92			MR571 472
5 Cover	93-96	49.98			MD620 780
Duct					
6 upper.....	93-96	51.95	0.3=		MD188 260
7 lower.....	93-96	45.82	0.3=		MD175 054
8 to throttle body.....	93-96	78.70	0.4=		MD184 027

ENGINE PARTS

1.5 LITER

Crankshaft pulley	93-96	44.43	m	1.2	MD148 438
Damper pulley	93-96	95.80	m	1.5	MD145 529
Timing cover					
& gasket.....					
upper.....	93-96	23.05	m	0.5=	MD160 683
lower.....	93-96	23.05	m	1.1	MD160 681
Oil pan	93-94	67.92	m	1.2	MD309 537
	95-96	67.92	m	1.2	MD309 537
sealer	93-96	16.67			A990Z C1X01
Oil filter	93-96	5.75	m	0.3=	MD325 714



6212140

ENGINE MOUNTING

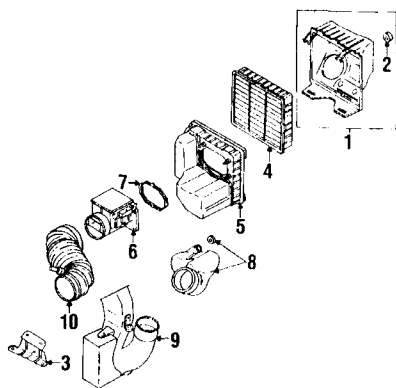
1.5 LITER

Mount insulator					
1 right.....					
manual trans.....	93-96	36.78	m	0.5=	MB691 235
auto trans.....	93-94	36.43	m	0.5=	MB844 840
	95-96	36.78	m	0.5	MB691 236
3 left.....					
manual trans.....	93-96	30.62	m	0.5=	MB949 166
auto trans.....	93-94	30.92	m	0.5=	MB691 238
	95-96	32.81	m	0.5	MR198 062
5 front.....					
manual steering.....	93-96	45.60	m	0.5=	MB691 269
P/S.....	93-96	45.13	m	0.5=	MB691 230
6 bracket.....	93-96	81.75			MD177 597
bolt					
2 right.....	93-96	1.71			MF140 273
left.....	93-96	2.21			MB871 930
8 front.....	93-96	2.92			MB871 929
7 Stay.....	93-96	29.77			MD180 590
Trans mount					

6212200

ARP 6212

9 manual trans	93-96	87.97	m	0.9	MB691 251
auto trans	93-96	87.12	m	0.9	MB691 253
10 bolt	93-96	3.46			MF104 928
11 Pipe holder	93-96	6.06			MD085 301



6212150

AIR INLET

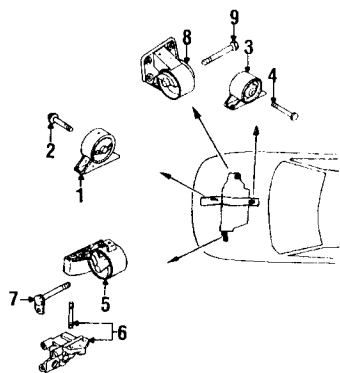
1.8 LITER

1 Body	93-96	49.98	m	0.5=	MD620 733
2 Insulator	93-96	3.25			MD620 528
3 bracket	93-96	9.08			MD168 385
4 Element	93-96	16.92			MR571 472
5 Cover	93-96	49.47			MD620 735
6 Air mass sensor	93-96	419.83	m	1.0	MD172 449
7 gasket	93-96	6.83	m	1.0	MD151 672
Duct					
8 upper	93-96	51.95		0.3=	MD188 260
9 lower	93-96	45.82		0.3=	MD175 054
10 to throttle body	93-96	117.05		0.4=	MD172 988

ENGINE PARTS

1.8 LITER

Crankshaft pulley	93-96	44.43	m	1.2	MD148 438
Timing cover					
& gasket					
upper	93-96	33.63	m	0.5=	MD167 754
lower	93-96	70.07	m	1.1	MD173 793
Oil pan	93-94	121.08	m	1.2	MD188 300
	95-96	120.33	m	1.2	MD307 577
sealer	93-96	38.17			MD970 389
Oil filter	93-96	5.75	m	0.3=	MD325 714



6212160

ENGINE MOUNTING

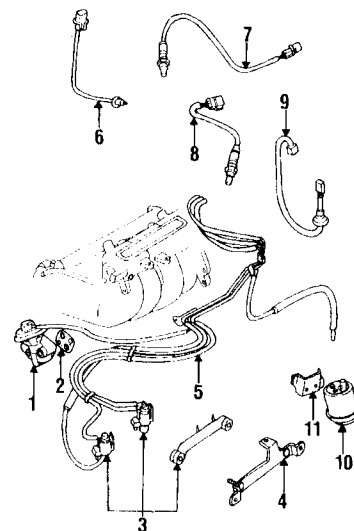
1.8 LITER

Mount insulator					
1 right					
manual trans	93-96	36.78	m	0.5=	MB691 235
auto trans	93-94	36.43	m	0.5=	MB844 840
left					
manual trans	93-96	30.62	m	0.5=	MB949 166
auto trans	93-94	30.92	m	0.5=	MB691 238
	95-96	36.78	m	0.5	MB691 236
	95-96	32.81	m	0.5	MR198 062
5 front					
w/o P/S	93-96	45.13#	m	0.5=	MB691 231
w/P/S	93-96	42.07#	m	0.5	MB871 928
6 bracket	93-96	64.00	m	0.5=	MD171 322
bolt					
2 right	93-96	1.71			MF140 273
4 left	93-96	2.21			MB871 930
7 front	93-96	2.92			MB871 929
Trans mount					
8 manual trans	93-96	91.94	m	0.9	MR103 177
auto trans	93-94	82.67	m	0.9	MB914 760

Please contact our Product Support Group if you require assistance locating, interpreting or using any information contained in the Estimating Data. Toll Free Number: 1-800-426-6867.

1993-96 MITSUBISHI MIRAGE

EMISSION SYSTEM



6212170

PARTS AND R&R OPERATIONS

EMISSION SYSTEM

1 EGR valve					
1.5 liter	93-96	104.02#	m	0.6	MD159 530
1.8 liter	93-95	98.77#	m	0.6	MD130 841
	96	88.41#	m	0.6	MD304 625
2 gasket	93-96	2.21#			MD119 127
3 Solenoid valve					
1.5 liter					
Federal	93	67.88	m	0.3=	MB890 738
California	93	67.28	m	0.3=	MD172 149
all	94-95	67.28	m	0.3=	MD172 149
	96	67.60	m	0.3	MR126 681
1.8 liter					
Federal	93	34.92	m	0.3=	MD166 074
California	93	67.28	m	0.3=	MD166 073
all	94-95	67.28	m	0.3=	MD166 073
	96	77.10	m	0.3	MR126 285
4 bracket					
1.5 liter	93-95	10.01			MD190 414
	96	10.82			MR161 524
1.8 liter	93-95	10.37			MD166 075
	96	11.04			MR126 999
5 Vacuum hose					
1.5 liter					
Federal	93	24.02			MD183 503
California	93	31.50			MD183 502
all	94	31.50			MD183 502
	95-96	24.01			MR126 286
1.8 liter					
Federal	93	23.53			MD173 475
California	93	31.42			MD192 629
all	94-95	31.42			MD192 629
	96	24.01			MR126 286
Temp sensor					
6 exhaust					
1.5 liter	93-95	57.13#	m	0.3=	MD158 749
1.8 liter	93-95	50.17#	m	0.3=	MD183 699
all	96		m	0.3	NOT LISTED
Oxygen sensor					
7 Federal, 1993 front					
1.5 liter	93	75.15	m	0.3=	MD191 064
1.8 liter	93	78.45	m	0.3=	MD174 677
California 93-94, Fed 94 front					
1.5 liter	93-96	75.15	m	0.3=	MD182 691
1.8 liter	93-96	75.15	m	0.3=	MD183 145
9 rear					
1.5 liter	93-96	75.15	m	0.3=	MD182 692
1.8 liter	93-96	75.15	m	0.3=	MD181 398
10 Vapor canister	93-96	31.98	m	0.3	MB825 341
11 bracket	93-96	5.88			MB658 708

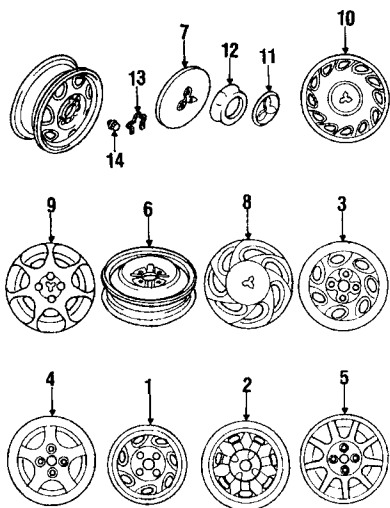
PARTS: Only applies to California specification models in the 1993 model year.

WHEELS

R&I OPERATIONS

R&I wheel 93-96 m 0.1

PARTS AND R&R OPERATIONS
CONTINUED



6212180

WHEELS (CONT)

WHEELS

Wheel, steel

1	black				
13x5	(p.5)	93-96	82.40#	m 0.3	MB816 364
14x5.5	(p.5)	94-96	82.40#	m 0.3	MB816 365
3	argnet				
13x4.5	(p.5)	93-96	82.40#	m 0.3	MB816 363
13x5	(p.5)	93-96	78.33#	m 0.3	MB816 144

Wheel, alloy

4	13x5	93-94	241.27#	m 0.3	MB892 839
5	14x5.5	94	270.08#	m 0.3	MB892 840
		95-96	241.27#	m 0.3	MR717 657

Wheel, spare

6	14"	93-96	70.62		MB816 431
	15"	94-96	91.35		MB816 432

Wheel cover

7	half cover	93-96	41.67		MB844 004
	full cover, 13" wheel				
8	2 door	93-96	65.05		MB910 093
9	4 door	93-94	65.05		MB910 094
		95-96	65.05		MR717 658
10	14" wheel	94	65.05		MB910 095
		95-96	65.72		MR726 483

Center cap

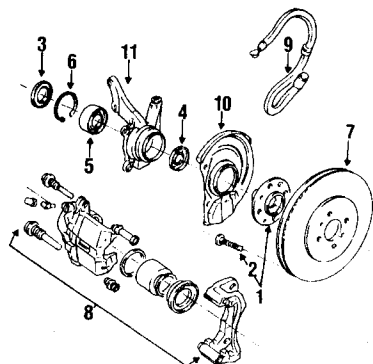
11	argnet	93-96	6.04		MB910 100
12	black	93-96	6.04		MB844 010
13	spring	93-96	2.21		MB816 438

Wheel nut

14	w/o cap	93-96	1.50		MA103 087
	w/cap	93-96	2.45		MB057 636

LABOR: Add for balance, weights and valve stems.

FRONT SUSPENSION



6212190

BRAKE COMPONENTS

ADD IF REQUIRED

Wheel alignment					
check front					
alignment	93-96	m 0.5			
adjust toe-in	93-96	m 0.7			
align four wheels	93-96	m 1.5			
Bleed brake system					
w/o ABS	93-96	m 0.3			
w/ABS	93-96	m 0.5			

OVERHAUL OPERATIONS

O/H suspension					
one side	93-96B	m 3.0			
both sides	93-96	m 5.8			

R&I OPERATIONS

R&I suspension					
one side	93-96B	m 2.0			
both sides	93-96	m 3.8			

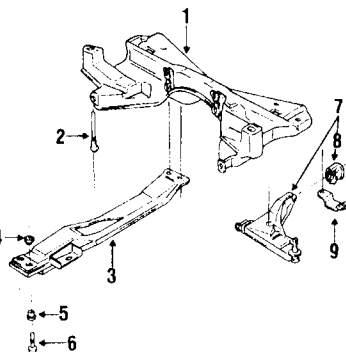
PARTS AND R&R OPERATIONS

1	Hub assy	93-96B	69.33#	m 1.7	MB948 961
2	stud	93-96	1.71		MB911 495
3	Grease seal				
inner	93-96B	4.58#	m 1.7	MB808 443	
outer	93-96B	4.58#	m 1.7	MB808 444	
5	Bearing	93-96B	32.17#	m 1.7	MB808 442
6	snap ring	93-96	7.54		MB808 445
7	Rotor				
2 door					
1.5 liter, S	93-96B	85.57#	m 1.7	MB699 281	
1.5 liter, ES & LS	93-96B	85.57#	m 1.7	MB699 281	
1.8 liter	94-96B	93.13#	m 1.7	MR449 769	
4 door	93-96B	93.13#	m 1.7	MR449 769	
8	Calliper				
2 door					
93-96R	180.00	m 0.8	RMB92 8423		
93-96L	180.00	m 0.8	RMB92 8422		
4 door					
93-96R	180.00	m 0.8	RMB92 8425		
93-96L	180.00	m 0.8	RMB92 8424		
9	Brake hose	93-96B	20.03	m 0.7	MR129 799
10	Dust cover				
w/o ABS	93-94R	8.52#	m 0.2	MB857 769	
	93-94L	8.52#	m 0.2	MB857 768	
w/ABS	93-94R	8.52#	m 0.2	MB857 769	
	93-94L	8.52#	m 0.2	MB857 768	
all	95-96R	8.52#	m 0.2	MB857 769	
	95-96L	8.52#	m 0.2	MB857 768	
11	Steering knuckle				
w/o ABS	93-94R	120.37	m 2.0	MB844 466	
	93-94L	133.98	m 2.0	MB844 465	
w/ABS	93-94R	120.37	m 2.0	MB844 466	
	93-94L	133.98	m 2.0	MB844 465	
all	95-96R	120.37	m 2.0	MB844 466	
	95-96L	133.98	m 2.0	MB844 465	

LABOR: After brake disc is removed.

† LABOR: Time is for hub, rotor, seal and bearing.

PARTS: Order by description. LABOR: Time is for hub, rotor, seal and bearing.



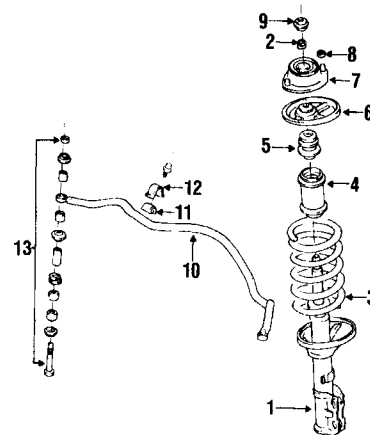
6212210

SUSPENSION COMPONENTS

1	Susp crossmember	93-96	391.20	s 3.5	MB871 412
2	bolt	93-94	7.38		MB808 310
		95-96	8.13		MR102 861
3	Center c'member				
2 door	93-96	142.42#	s 1.5	MR103 245	
4 door	93-96	142.42#	s 1.5	MR103 245	
4	bushing				
upper	93-96	1.92		MB844 445	
lower	93-96	1.92		MB844 446	
6	bolt	93-94	4.58		MB844 449
		95-96	4.08		MB176 661
	Collar	93-96	2.92		MB844 447
	Dynamic damper	93-96	29.57		MR102 687
7	Control arm				
1.5 liter	93-96R	115.52#	m 1.5	MB907 164	
	93-96L	115.52#	m 1.5	MB907 163	
1.8 liter	93-96R	115.52#	m 1.5	MB912 078	
	93-96L	115.52#	m 1.5	MB912 077	
8	bushing	93-96R	19.63#	m 0.7	MB808 910
		93-96L	19.63#	m 0.7	MB808 909
	Cover				
ball joint	93-96	5.93#		MB176 047	
9	bracket	93-96	4.92		MB808 264
	bolt	93-94	4.79		MB808 311
		95-96	4.88		MR102 860

PARTS: Part included in control arm assembly.

† PARTS: Order by description.

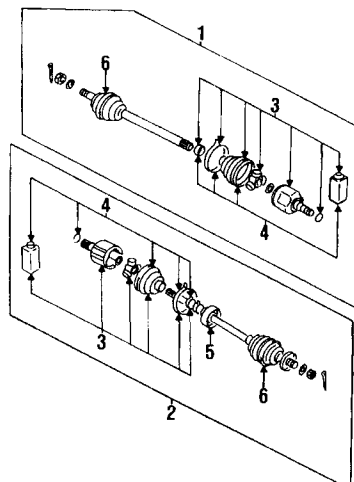


6212220

STRUTS & COMPONENTS

1	Strut				
1.5 liter	93-94R	115.66	m 1.3	MB891 698	
	93-94L	119.72	m 1.3	MB891 699	
1.8 liter					
w/o ABS	93-94R	115.66	m 1.3	MB891 698	
	93-94L	119.72	m 1.3	MB891 699	
w/ABS	93-94R	115.66	m 1.3	MB891 698	
	93-94L	119.72	m 1.3	MB891 699	
all	95-96R	119.72	m 1.3	MR197 218	
	95-96L	119.72	m 1.3	MR197 217	
2	nut				
upper	93-96	1.42		MU431 503	
3	Spring				
1.5 liter					
2 door manual trans.	93-96B	56.48	m 1.3	MB891 715	
2 door auto trans.	93-96B	59.43	m 1.3	MB891 716	
4 door	93-96B	59.43	m 1.3	MB891 716	
1.8 liter					
manual trans	93-96B	59.43	m 1.3	MB891 716	
auto trans	93-96B	72.38	m 1.3	MB891 717	
4	Dust cover	93-96	2.33		MB303 070
5	Bumper	93-96	8.70		MB303 069
6	Upper seat	93-96	9.85		MB891 549
7	Support	93-96	35.97		MB808 306
8	nut	93-94	.96		MB288 653
		95-96	1.13		MF434 105
9	Cap	93-96	1.71		MB109 960
10	Stabilizer bar				
1.5 liter	93-96	72.92	m 1.3	MB844 452	
1.8 liter	93	72.92	m 1.3	MB844 452	
	94-96	98.00	m 1.3	MB844 453	
11	bushing	93-96	1.92#		MB844 455
12	bracket	93-96	3.58		MB844 457
13	Link assy	93-96	10.85	m 0.4	MB241 974

PARTS: Order by description.



6212230

DRIVE AXLES

Drive shaft assy				
1.5 liter				
1 Birfield	93-96R	532.35#	m 1.3	MB886 540
2	93-96L	520.48#	m 1.3	MB937 963
Rzeppa	93-96R	543.12#	m 1.3	MB837 400
	93-96L	520.45#	m 1.3	MB937 959
1.8 liter				
w/o ABS	93-94R	537.75#	m 1.3	MB837 642
	93-94L	515.30#	m 1.3	MB937 961
w/ABS	93-94R	532.52#	m 1.3	MB886 230
	93-94L	510.29#	m 1.3	MB937 965
all	95-96R	537.75#	m 1.3	MB837 642
	95-96L	515.30#	m 1.3	MB937 961
3 Inner joint assy				
1.5 liter				
MMC	93-96B	232.43#	m 0.5=	MB936 148
NTN	93-96B	439.28#	m 0.5=	MB526 860
1.8 liter	93-96B	221.62#	m 0.5=	MR331 241
4 Boot kit				
1.5 liter				
MMC	93-96B	54.92#	m 0.5	MB936 667
NTN built	93-96B	54.92#	m 0.5	MB526 863
1.8 liter	93-96B	54.92#	m 0.5	MB936 162
5 Damper				
1.5 liter				
left side only	93-94	60.13#		MB937 966
1.8 liter	93-94R	65.67#		MB936 180
	93-94L	58.96#		MB937 967
all	95-96	#		NOT LISTED
Outer joint				
& boot	93-96			NOT LISTED

PARTS: Order by description.
 † LABOR: After shaft is removed.

STEERING

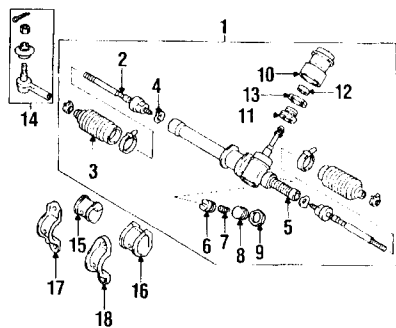
OVERHAUL OPERATIONS

O/H steering gear		
manual steering	93-96	m 3.2
P/S	93-96	m 4.0
O/H steering column		
w/o tilt	93-96	m 3.0
w/tilt	93-96	m 3.5

R&I OPERATIONS

R&I steering gear		
	93-96	m 2.0
R&I steering column		
	93-96	m 1.0

PARTS AND R&R OPERATIONS



6212240

STEERING GEAR & LINKAGE
MANUAL STEERING

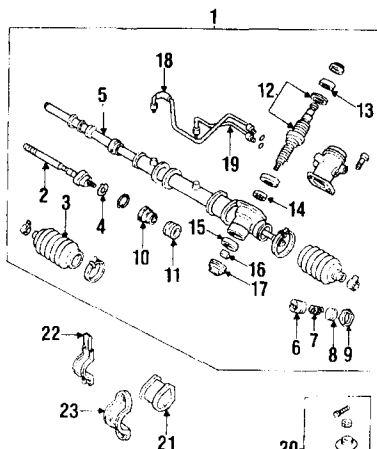
1 Gear assy				
2 door	93-96	473.83	m 2.0=	MB870 949
4 door				
1.5 liter	93	473.83	m 2.0=	MB870 949
	94-96	473.83	m 2.0=	MB870 949
1.8 liter	93-94	473.83	m 2.0=	MB870 949
	95-96	473.83	m 2.0=	MB870 949
15 mount bushing				
	93-96R	5.79		MB532 397
	93-96L	5.17		MB864 381
17 bracket				
	93-96R	2.33		MB288 982
	93-96L	3.71		MB266 706
2 Inner tie rod				
	93-96B	50.05#	m 1.5	MR297 969
3 Boot				
	93-96B	16.03#	m 0.7	MB501 711
4 washer				
	93-96	4.38#		MB266 164
5 Rack				
2 door	93-96	148.93#	m 3.2	MB910 943
4 door				
1.5 liter	93	148.93#	m 3.2	MB910 943
	94-96	148.93#	m 3.2	MB910 943
1.8 liter	93-94	148.93#	m 3.2	MB910 943
	95-96	148.93#	m 3.2	MB910 943
6 support				
	93-96	8.31#		MB532 526
7 spring				
	93-96	1.38#		MB315 560
8 cover				
	93-96	6.58#		MB122 138

9 nut	93-96	4.04#		MB006 415
Pinion cover				
10 upper	93-96	7.24#		MB910 935
11 lower	93-96	12.64#		MB489 508
12 seal	93-96	9.10#		MB412 315
13 Lock nut	93-96	5.04#		MB412 314
14 Outer tie rod	93-96B	26.80	m 0.5	MR476 457

PARTS: Part included in steering gear assembly.
 LABOR: Time is for overhaul.

† PARTS: Part included in steering gear assembly.
 LABOR: Time is for outer and inner.

‡ PARTS: Part included in steering gear assembly.



6212250

STEERING GEAR & LINKAGE

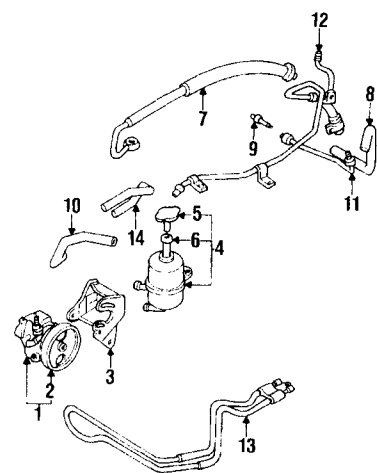
POWER STEERING

1 Gear assy	93-96	1525.89	m 3.0=	MB910 820
21 mount bushing	93-96	5.17		MB864 381
22 bracket	93-96R	5.04		MB315 258
23	93-96L	3.71		MB266 706
2 Inner tie rod	93 B	50.05#	m 2.8	MR297 969
	94-96B	50.05#	m 2.8	MR297 969
3 Boot				
	93-96	15.58#		MR103 280
4 washer				
	93-96	4.38#		MB266 164
5 Rack				
	93-96	156.07#	m 4.0	MR103 262
6 support				
	93-96	8.22#		MB351 245
7 spring				
	93-96	5.17#		MB553 048
8 cover				
	93-96	6.58#		MB122 138
9 nut				
	93-96	4.04#		MB006 415
10 stopper				
	93-96	7.50#		MR103 276
11 oil seal				
	93-96	2.08#		MR103 266
12 Pinion assy				
	93-96	335.37#	m 4.0	MR103 266
13 Upper bearing				
	93-96	14.30#		MB636 916
Bearing shaft				
14 upper	93-96	11.03#		MB350 616
15 lower	93-96	11.07#		MB870 071
Shaft nut				
16 lower	93-96	4.38#		MB243 335
17 Plug	93-96	11.28#		MB243 336
18 Feed line				
	93-96R	48.33#		MR103 279
	93-96L	48.33#		MR103 278
20 Outer tie rod				
	93-96B	26.80	m 0.5	MR476 457

PARTS: Part included in gear assembly. LABOR: Time is for outer and inner.

† PARTS: Part included in gear assembly. LABOR: Time is for overhaul.

‡ PARTS: Part included in steering gear assembly.



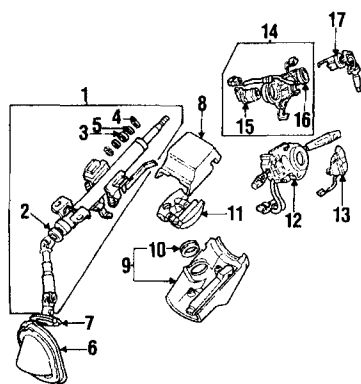
6212260

PUMP & HOSES

1 P/S pump				
1.5 liter	93	636.39	m 1.2	MB914 742
	94-95	33.28	m 1.2	MB815 091
	96	566.87	m 1.2	MR272 145
1.8 liter	93	642.63	m 1.2	MB914 743
	94-95	566.87	m 1.2	MR272 147
	96	566.87	m 1.2	MR272 147
3 mount bracket				
1.5 liter	93	33.28		MB815 091
	94-95	30.88		MB949 314
	96	33.28		MB815 091
1.8 liter	93	25.27		MB910 015
	94-95	22.27		MB949 315
	96	25.27		MB910 015
Pulley & shaft				
1.5 liter	93	55.14#	m 0.6	MR103 346
1.8 liter	93	53.67#	m 0.6	MR103 365
all	94-96	1.50#	m 0.6	MR103 354
4 Reservoir				
	93-96	48.17	m 0.5=	MB815 094
5 Cap				
	93-96	9.58#		MB288 989
6 Filter				
	93-96	7.92#		MB350 950
Hose				
7 pressure				
1.5 liter	93	186.22	m 0.6	MB815 120
	94-96	62.97	m 0.6	MB914 783
1.8 liter	93	186.22	m 0.6	MB815 121
	94-96	62.97	m 0.6	MB914 784
8 return				
	93-96	26.58	m 0.6	MB864 589
9 end pipe				
	93-96	17.48		MB501 603
10 suction				
1.5 liter	93-96	27.73		MB815 123
1.8 liter	93-96	28.00		MB815 124
Tube				
11 pressure				
	93	18.17	m 0.3	MB864 590
	94-96	17.82	m 0.3	MB914 782
12 return				
1.5 liter	93-94	25.17	m 0.3	MR198 058
	95-96	25.17	m 0.3	MR198 058
1.8 liter	93-94	1.58	m 0.3	MR198 030
	95-96	25.16	m 0.3	MR198 056
13 Oil cooler tube				
	93-94	25.17		MR198 054
	95-96	25.17		MR198 054
14 return hose				
to reservoir	93-96	18.25		MB010 721
to pump	93-96	18.25		MB010 721

PARTS: Part included in steering pump assembly.
 † PARTS: Part included in reservoir assembly.

CONTINUED



6212270

STEERING (CONT)

STEERING COLUMN ASSEMBLY

WARNING

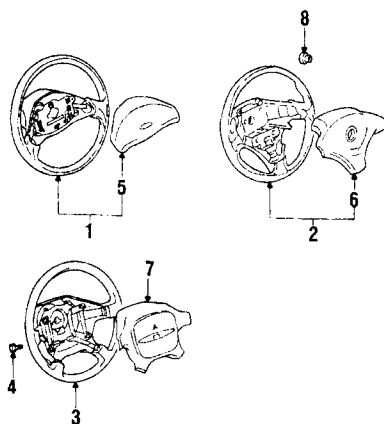
Before repairing any air restraint system, the battery cables must be disconnected and any back-up power supply discharged for the time period stipulated by the vehicle manufacturer in order to prevent accidental deployment. NOTE: Wiring repairs should only be performed in accordance with vehicle manufacturer specifications.

1 Column Assy				
w/o tilt	93	181.00	m 1.0=	MR130 431
	94	179.64	m 1.0=	MB871 726
	95-96	179.64	m 1.0=	MB871 726
w/tilt	93	179.64	m 1.0=	MB911 147
	94-95	179.64	m 1.0=	MB871 695
	96	179.64	m 1.0	MB871 726
2 bearing 93-96 9.77# MB412 566				
3 spacer 93-96 1.00# MB347 180				
4 snap ring 93-96 .88# MF522 011				
5 stopper 93-94 .88# MB122 950				
	95-96	.88#		MB122 950
Joint cover				
6 lower	93-96	12.44		MB864 584
Band				
7 inner	93-96	2.46		MB892 528
Column cover				
8 upper	93	8.10#	0.3	MB898 854
	94-96	9.59#	0.3	MB898 853
9 lower	93	11.17#	0.3	MB898 851
	94-96	13.11#	0.3	MB898 849
10 grommet 93-96 1.46 MB522 123				
11 pad 93-96 17.53 MB869 909				
12 Combo switch 93 96.00# m 0.8 MB863 522				
	94	182.46# m 0.8		MB863 529
	95	134.40# m 0.8		MR182 624
13 Cruise switch 93 39.51 MB863 148				
	94-96	47.13		MB903 174
14 Lock housing				
manual trans	93	94.00	m 1.0	MB802 336
	94	77.09	m 1.0	MR172 288
	95-96	77.09	m 1.0	MR172 288
auto trans	93	94.00	m 1.0	MB802 337
	94	77.09	m 1.0	MR172 289
	95-96	77.09	m 1.0	MR172 289
15 Ignition switch 93-96 35.32# m 0.5 MB903 644				
16 Cable 93-94 29.47# MB894 780				
	95-96	35.23#		MB894 779
17 Cyl & keys				
manual trans	93-94	29.77	m 1.0	MB927 054
	95-96	30.07	m 1.0	MB927 055
auto trans	93-94	29.49	m 1.0	MR101 489
	95-96	29.54	m 1.0	MR194 366

PARTS: Order by description.

PARTS: Part included in steering column assembly.

PARTS: Part included in lock housing assembly.



6212275

STEERING WHEEL

WARNING

Before repairing any air restraint system, the battery cables must be disconnected and any back-up power supply discharged for the time period stipulated by the vehicle manufacturer in order to prevent accidental deployment. NOTE: Wiring repairs should only be performed in accordance with vehicle manufacturer specifications.

Steering wheel

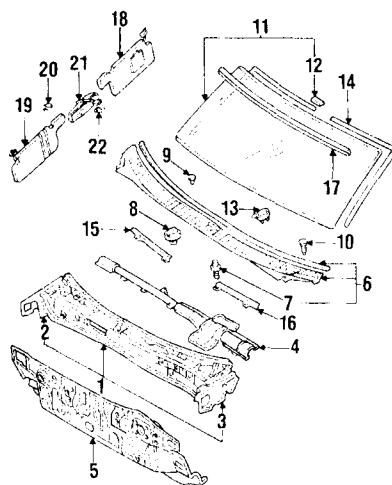
w/o air bag				
1 2 spoke	93	209.14#	m 0.5	MR102 815
2 3 spoke	93	209.14#	m 0.5	MR102 815
3 w/air bag	94-96	200.25#	m 0.6	MR131 561
8 retainer nut 93-96 1.42 MU431 503				
4 screw 94-96 .38 MR103 818				
Pad				
w/o air bag				
5 2 spoke	93	54.00#		MR102 615
6 3 spoke	93	54.16#		MR102 827
7 Air bag module SEE FOOTNOTE				

PARTS: Order by description.

PARTS: Order by description. Part included in steering wheel assembly.

PARTS: Part located in RESTRAINT SYSTEMS group.

COWL & WINDSHIELD



6212280

PARTS AND R&R OPERATIONS

COWL				
1 Cowl panel	(p1.1) 93	399.35@	5.0	MB907 823
	(p1.1) 94-96	468.60@	5.0	MR125 573
2 Extension 93-96R 34.95# MB835 968				
3	93-96L	34.27#		MB835 967
4 Crossmember 93-94 281.61 MB945 087				
	95-96	320.51		MR178 667
5 Dash panel 93-96 232.76 MB907 817				
6 Cowl grille 93-96 48.17 0.8 MB696 769				
7 retainer clip 93-96 .50# MB662 743				
8 front 93-96 .75 MB814 167				
rear				
9 blue	93-96	.33		MS470 075
10 black	93-96	.46		MB814 166

11 Glass

Mitsubishi, 2 door				
clear	93-96	406.37	4.0	MB799 189
blue	93-96	410.35	4.0	MB794 058
green	94-96	376.47	4.0	MR108 664
Mitsubishi, 4 door				
clear	93-96	325.00	4.0	MB798 991
blue	93-96	406.37	4.0	MB794 054
green	94-96	372.82	4.0	MR108 662
NAGS, 2 door				
clear	93	666.55	4.0	FW0733CLN
blue tint	93-96	895.85	4.0	FW0733BTN
shaded blue t.	93-96	945.05	4.0	FW0733BBN
NAGS, 4 door				
clear	93	744.05	4.0	FW0735CLN
blue tint	93-96	895.85	4.0	FW0735BTN
shaded blue t.	93-96	983.35	4.0	FW0735BBN
12 fastener 93 2.38 MB344 738				
13 spacer 93 2.21 MB814 151				
	94-96	.50		MR109 930
14 Weatherstrip 93-96 20.08 MB292 508				
15 Glass holder 93-96R 8.04 MB696 892				
	93-96L	8.04		MB696 891

Reveal molding

17 upper	93-96L	11.50#	4.0	MB696 789
18 Visor	93 R	22.90#	0.3=	MB967 651
	93 L	23.35#	0.3=	MB967 650
	94 R	24.74#	0.3=	MR720 055
	94 L	24.74#	0.3=	MR707 243
	95-96R	24.46#	0.3	MR218 822
	95-96L	24.46#	0.3	MR218 821
20 Holder 93-96 .88# MB718 134				
21 Mirror inside 93-96 42.52# 0.3= MB879 833				
22 Cover 93-96 4.83# MB730 397				

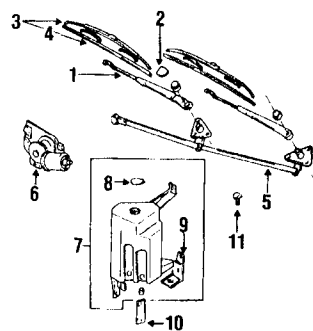
PARTS: Order by description.

LABOR: Included with windshield R&R.

PARTS: Part included with cowl panel.

PARTS: Part included with cowl top grille.

LABOR: Time is after windshield, instrument panel and all necessary bolted on parts are removed.



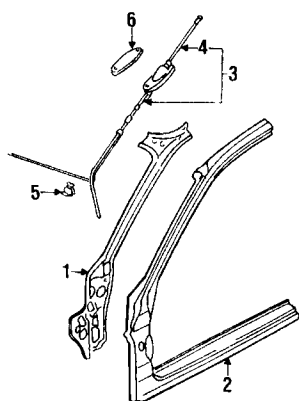
6212290

WIPER & WASHER COMPONENTS

1 Wiper arm 93-96R 24.98 0.3= MB944 046				
	93-96L	25.23	0.3=	MB944 049
nut 93-96 1.58 MS440 074				
2 Cover 93-96 2.50 MB821 132				
3 Blade Assy 93-96B 16.51# 0.2= MB859 050				
4 refill 93-96 4.95# MB821 509				
5 Linkage 93-96 67.95 m 1.0 MB821 114				
6 Motor 93-96 195.82 m 1.0 MB821 112				
7 Reservoir 93-96 31.98 0.3= MB880 475				
9 bracket 93-96 7.42# MB881 564				
8 Cap 93-96 2.38# MB543 148				
Motor				
10 washer	93-96	31.60	0.3	MB286 961
11 Nozzle	93-96	11.62	0.2=	MB881 365

PARTS: Order by length.

PARTS: Part included in reservoir assembly.



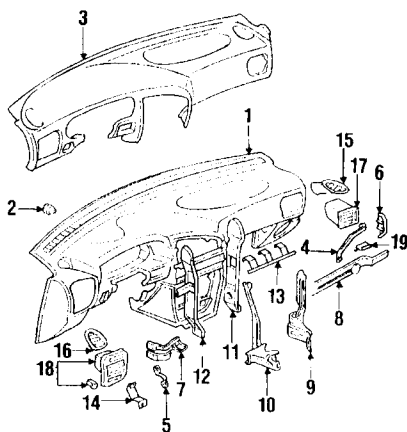
6212300

HINGE PILLAR**Hinge pillar**

1 inner					
2 door	93-96R	101.32#	s	8.5	MB907 838
	93-96L	99.33#	s	8.5	MB907 837
4 door	93-96R	100.20#	s	8.5	MB945 036
	93-96L	100.20#	s	8.5	MB945 035
2 outer					
2 door	(p1.6) 93-96R	369.67#	s	8.5	MB861 996
	(p1.6) 93-96L	393.53#	s	8.5	MB861 995
4 door	(p1.6) 93-96R	372.27#	s	8.5	MB835 900
	(p1.6) 93-96L	383.57#	s	8.5	MB907 807
3 Antenna assy	93-96	48.50		0.6	MB818 511
4 Mast	93-96	19.32#			MB818 650
5 clip	93-96	1.42			MB132 150
6 Hole cover	93-96	7.10			MB818 515

LABOR: Complete assembly, with outer & inner structures. After hood, fender, door, instrument panel & windshield are removed.

† **PARTS:** Part included in antenna assembly.

INSTRUMENT PANEL

6212310

WARNING

Before repairing any air restraint system, the battery cables must be disconnected and any back-up power supply discharged for the time period stipulated by the vehicle manufacturer in order to prevent accidental deployment. NOTE: Wiring repairs should only be performed in accordance with vehicle manufacturer specifications.

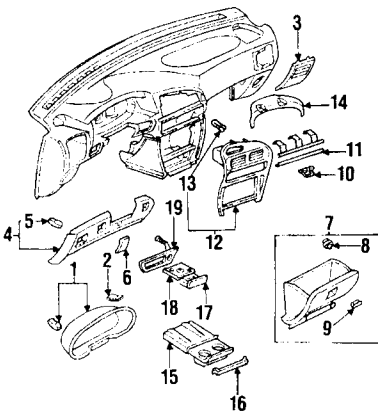
PARTS AND R&R OPERATIONS**INSTRUMENT PANEL**

1 Instrument panel	93-94	226.95#		6.0	MB967 817
	95-96	233.45#		6.0	MR733 147
2 grommet	93-96	3.96			MB603 995
3 Pad	93-94	153.35#		6.0	MB797 998
	95-96	156.63#		6.0	MR733 145
Side bracket					
4 inner	93-96R	8.12			MB869 811
	93-96L	8.12			MB869 812
6 outer	93-96R	8.54			MB803 536
	93-96L	8.58			MB869 813
8 Glove box frame	93-96	8.25			MB803 588
Reinforcement					
9 center console	93-96R	8.12			MB869 804
	93-96L	8.12			MB869 806
11 cluster	93 R	6.21			MB869 816
	93 L	7.94			MB869 818
	94-96R	5.58			MR148 130

13 Upper bracket	94-96L	8.82			MR148 132
	93-96	13.85			MB946 531
14 Outer brace	93-96	5.08			MB869 795
15 Defroster grille	93-94R	3.50#	0.3		MB960 564
	93-94L	3.50#	0.3		MB960 570
	95-96R	3.25#	0.3		MR733 149
	95-96L	3.50#	0.3		MB960 570
17 Air outlet	93-96R	15.35#	0.3		MB797 914
	93-96L	15.50#	0.3		MB797 912
19 clip	93-96	2.21			MB869 880

PARTS: Order by description and color.

† **PARTS:** Order by description and color. **LABOR:** Time includes both instrument panel and pad.

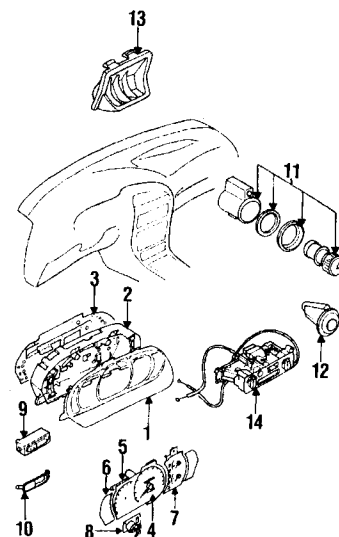


6212320

INSTRUMENT PANEL**COMPONENTS**

1 Cluster visor	93-96	47.68	0.5=		MB869 890
2 nut	93-96	.88			MB135 995
3 Lower trim panel	93 R	16.42#	1.0		MB967 826
	93 L	61.35#	0.5=		MR149 552
	94-96R	16.42#	1.0		MB967 826
	94-96L	61.35#	0.5=		MR149 552
5 clip	93-96	.50			MB652 510
6 Hole cover	93-96	2.08#			MB967 829
7 Glove box	93-96	41.93	0.5=		MB918 373
8 stopper	93-96	1.29			MB562 195
9 Lock	93-94	5.92#			MR216 642
	95-96	5.92#			MR216 642
10 Striker	93-96	2.88			MB869 835
Under cover					
11 panel	93-96	5.92			MB869 798
Trim panel					
12 center	93	29.48#	0.5=		MB958 099
	94-96	35.79#	0.5=		MB898 863
4 door	93-94	30.70#	0.5=		MB898 864
	95-96	35.79#	0.5		MB898 863
	93-96	.50			MB652 510
13 clip					
Protector					
14 upper	93-96	10.37			MB869 810
15 Cup holder	93-96	43.71#	0.3		MB878 273
16 Blank cover	93	2.92			MB794 229
	94-96	2.63			MB797 074
17 Ashtray	93	40.60	0.2=		MB946 161
	94-96	43.91	0.2=		MB946 160
18 Upper cover	93-96	5.04			MB918 769
19 Trim bezel	93-94	7.54			MB798 010
	95-96	7.54			MB798 009

PARTS: Order by description and color.



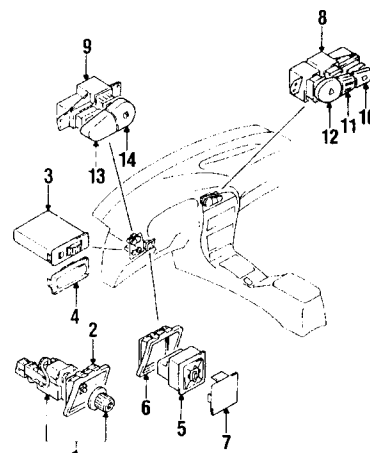
6212330

INSTRUMENT PANEL GAUGES & COMPONENTS

1 Cluster lens	93-96	41.35#			MB938 360
2 Case	93-96	32.16#	0.7		MB938 400
3 Circuit board	93-94	38.99#			MB938 991
	95-96	40.57#			MB938 992
4 Speedometer	93	174.57#	1.0		MB938 978
	94	197.73#	1.0		MR146 231
	95-96	188.30#	1.0		MR201 689
Fuel gauge					
5 w/o tachometer	93-94	42.68#	1.0		MB946 558
	95-96	45.29#	1.0		MR201 690
Lens					
6 indicator	93-94R	6.79#			MB938 388
	93-94L	7.54#			MB938 387
	95-96R	7.42#			MB946 682
	95-96L	6.79#			MR201 687
Temp gauge					
7 fuel, water	93-94	70.37#	1.0		MB946 556
	95-96	78.14#	1.0		MR201 693
8 Tachometer	93-94	290.95#	1.0		MB938 407
	95-96		1.0		NOT LISTED
Clock					
9 digital	93-96	44.18	0.3=		MZ601 066
10 Hole cover	93-96	3.67			MB803 901
11 Lighter	93-96	27.78			MB803 905
12 plug	93-96	1.13			MB423 550
13 Coin holder	93-96	2.92#			MB794 245
14 Heater control	93	64.93	1.2		MB878 420
	94-96	74.88	1.2		MR147 763

PARTS: Order by description.

† **PARTS:** Order by description. **LABOR:** R&R complete.



6212333

INSTRUMENT PANEL SWITCHES

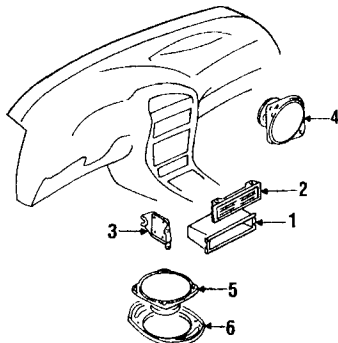
Rheostat

CONTINUED

INSTRUMENT PANEL (CONT)

1	w/knob	93-96	34.58#	0.6	MB803 863
Bezel					
2	w/dial	93-96	2.08#	0.6	MB946 978
3		93	32.82#	0.6	MB899 265
		94-96	35.82#	0.6	MB899 264
Plug					
4	switch	93	2.21		MB878 278
		94-96	2.04		MB878 277
5	Mirror switch	93-96	67.18		MB561 810
6	Interior molding	93-96	2.21		MB797 079
7	Plug	93-95	2.21#		MB797 926
		96	2.21#		MB796 919
Holder					
8	switch	93-96R	2.92		MB877 613
9		93-96L	2.92		MB877 619
Switch					
10	defogger	93	25.23		MR167 302
		94-96	25.23		MR167 302
11	cruise	93	54.63		MR167 802
		94-96	54.63		MR167 802
12	hazard	93	28.28		MB797 919
		94-96	28.28		MB797 919
Plug					
13	fog lamp switch	93	2.21		MB962 207
		94-96	2.21		MB899 267
14	traction switch	93	2.21		MB798 014
		94-96	2.21		MB798 013
	defogger	93	2.21		MB967 663
		94-96	2.21		MB967 662
	cruise	93-94	2.21		MB798 012
		95-96	2.21		MB798 011

PARTS: Order by description.



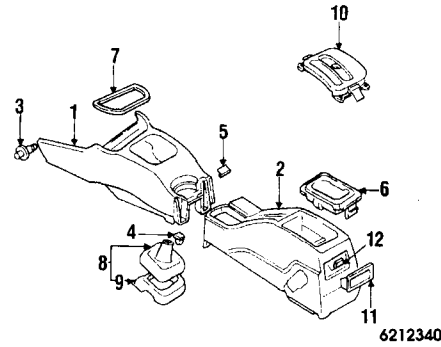
6212335

SOUND SYSTEM

Radio					
1	Accessory box	93-96	#	0.6	SEE FOOTNOTE
		93	13.58		MB898 862
		94-96	16.13		MB898 861
2	Blank cover	93-96	3.96		MB423 642
3	Mount bracket	93-96R	4.13		MB874 344
		93-96L	4.13		MB874 343
Speaker					
4	dash	93	53.10	0.5=	MB509 482
		94-96		0.5	NOT LISTED
	front door	94	62.22		MR172 418
		95-96	62.22		MR172 418
5	package shelf	93	88.92	0.5=	MB629 119
		94-96	75.14	0.5=	MR142 014
6	bracket	93-94	11.30		MB627 446
		95-96			NOT LISTED

PARTS: Contact dealer for price & availability.

CONSOLE



6212340

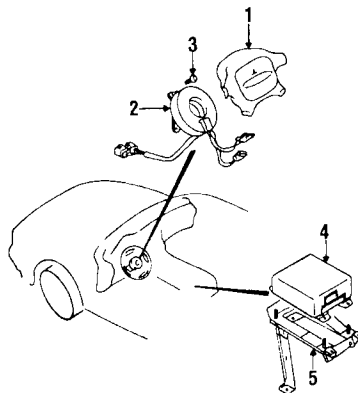
PARTS AND R&R OPERATIONS

CENTER

Console					
1	front	93-96	65.43#	1.0	MB898 842
2	rear	93	35.70#	1.0	MB967 823
		94	42.14#	1.0	MR712 498
		95	71.22#	1.0	MR149 487
		96	75.95#	1.0	MR149 490
3	clip	93-96	1.13#		MB779 749
4	grommet	93-96	.96		MU480 032
5	Plug	93-96	1.50#		MB794 201
6	Hole cover	93-96	1.29#		MB778 196
Upper cover					
	rear	94	1.33#		MR712 495
		95-96			NOT LISTED
7	Trim plate	93-96	5.46#		MB898 846
8	Shift boot				
	manual trans	93-96	22.60#		MB794 218
9	Panel	93-96	7.48		MB869 843
10	Auto trans bezel	93-96	100.32#		MB797 931
11	Ashtray	93-96	12.95#		MB794 170
12	nut	93-96	.88		MB135 995

PARTS: Order by model & color.

RESTRAINT SYSTEMS



6212345

WARNING
Before repairing any air restraint system, the battery cables must be disconnected and any back-up power supply discharged for the time period stipulated by the vehicle manufacturer in order to prevent accidental deployment. NOTE: Wiring repairs should only be performed in accordance with vehicle manufacturer specifications.

REPLACEMENT COMPONENTS

The following components are mandatory replacement items following an air bag deployment according to current vehicle manufacturer recommendations. This information supersedes all prior information published by MOTOR.

Air bag module(s)
Front impact sensors
SRS diagnostic unit

INSPECTION COMPONENTS

The following components must be inspected for damage and replaced if necessary.

Clockspring
Steering wheel
Steering column
intermediate joint
Wire harnesses
Terminals
Connectors

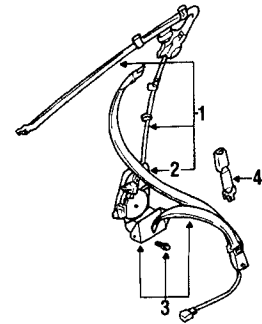
ADD IF REQUIRED
System diagnosis .. 94-96 m 0.5

PARTS AND R&R OPERATIONS

AIR BAG COMPONENTS

Air bag module					
1	driver side	94	530.00	m 0.5	MR197 018
		95-96	530.00	m 0.5	MR197 018
	passenger side	94-96	815.38	m 0.7	MR733 144
2	Clockspring	94-95	234.83#	m 1.0	MB894 997
		96	290.76#	m 1.0	MB953 169
3	screw	94-95	.08		MF453 016
		96	.71		MF456 805
4	Diagnostic unit	94	642.65	m 0.7	MR141 887
		95	642.65	m 0.7	MR173 997
		96		m 0.7	MR238 995
5	bracket	94	16.64		MR122 471
		95-96	15.58		MB875 636

LABOR: Includes steering wheel R&R/R.



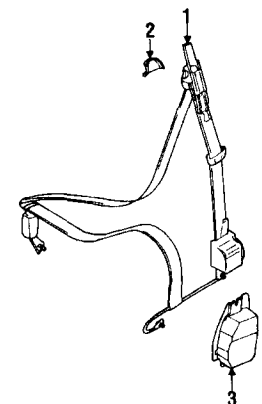
6212350

FRONT SEAT BELTS PASSIVE RESTRAINT

1 Guide rail					
	passenger side				
	2 door	93-94	734.66	1.5	MB872 997
	4 door	93-94	771.82	1.5	MB872 999
	both	95-96		1.5	NOT LISTED
	driver side				
	2 door	93	515.00	1.5	MR219 894
	4 door	93	734.66	1.5	MB872 998
	both	95-96		1.5	NOT LISTED
2	Relay	93-94	32.34#		MB543 648
		95-96			NOT LISTED
3 Front belt Assy					
	passenger side	93-94	126.73#	1.0	MB967 734
		95-96	122.43#	1.0	MR733 153
	driver side	93-94	128.02#	1.0	MB967 732
		95-96	122.43#	1.0	MR139 732
4	Extension	93-95	26.08		MB902 516
		96	16.05		MB544 777

PARTS: Order by color.

1 LABOR: included in front guide rail assembly.

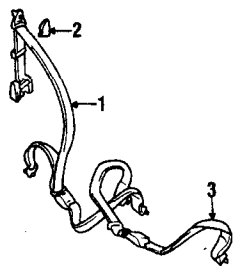


6212355

FRONT SEAT BELTS ACTIVE RESTRAINT SYSTEM

1 Front belt Assy					
	driver side				
	2 door	94-96	122.43#	1.0	MR139 729
	4 door	94-96	122.43#	1.0	MR139 731
Cover					
2	sash guide	94-96	2.50		MB874 941
3 Retractor cover					
	4 door	94-96	8.70		MB915 821

PARTS: Order by color.

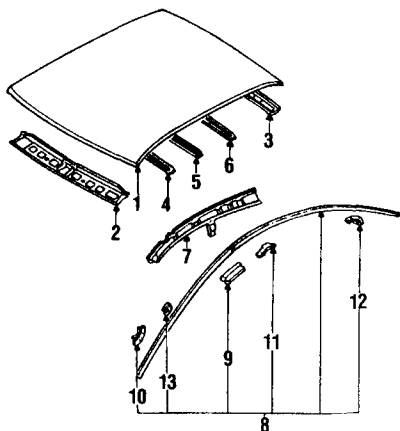


6212357

REAR SEAT BELTS

1 Shoulder belt				
2 door.....	93-94	96.25#	1.0	MB960 170
	95-96	42.50#	1.0	MR717 620
4 door.....	93-94	107.13#	1.0	MB960 167
	95-96	42.50#	1.0	MR717 619
Cover				
2 sash guide.....	93-96	2.58#		MB739 426
3 Lap belt				
	93-94	57.08#	1.0	MB717 006
	95-96	48.25#	1.0	MB960 153

PARTS: Order by color.

ROOF & BACK GLASS

6212360

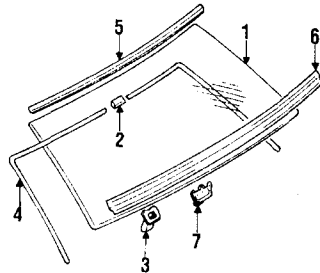
R&I OPERATIONS**R&I headliner**..... 93-96 1.1**PARTS AND R&R OPERATIONS****ROOF**

1 Roof panel				
2 door.....	(p3.3) 93-96	298.50	18.0	MB907 910
4 door.....	(p3.3) 93-96	297.13	18.0	MB835 969
Header panel				
2 front				
2 door.....	93-96	30.62#	2.0	MB835 977
4 door.....	93-94	30.62#	2.0	MR125 712
	95-96	30.62#	2.0	MR125 712
3 rear				
2 door.....	93-96	34.92#	2.0	MB907 927
4 door.....	93-96	33.52#	2.0	MB835 978
Bow				
4 front				
2 door.....	93-96	35.70	0.5	MB907 928
4 door.....	93-96	37.17	0.5	MB835 981
5 center				
2 door.....	93-96	35.70	0.5	MB907 929
4 door.....	93-96	37.17	0.5	MB835 984
6 rear				
2 door.....	93-96	35.00	0.5	MB907 930
4 door.....	93-96	37.17	0.5	MB835 987
7 Side rail				
2 door.....	93 R	65.67#	2.5	MB907 842
	93 L	64.38#	2.5	MB835 935
	94 R	65.67#	2.5	MB907 842
	94 L	98.73#	2.5	MB959 161
	95-96R	65.67#	2.5	MB907 842
	95-96L	64.38#	2.5	MB835 935
4 door.....	93-94R	109.97#	2.5	MB945 020
	93-94L	109.97#	2.5	MB945 039
	95-96R	133.79#	2.5	MB907 840
	95-96L	132.44#	2.5	MB835 931
8 Drip molding				
2 door.....	93-96R	53.38	0.3=	MB696 996
	93-96L	53.38	0.3=	MB696 995

4 door.....	93-96R	55.62	0.3=	MB696 804
	93-96L	55.62	0.3=	MB696 803
9 spacer clip	93-96	.88#		MB814 170
10 type 1				
93-96	1.50#			MB814 154
11 type 2				
93-96	2.21#			MB814 153
12 type 3				
93-96	.88#			MB814 157
13 type 4				
93-96	.88#			MB814 152

LABOR: After roof is removed.

PARTS: Part included in drip molding assembly. Quantities are per side.



6212370

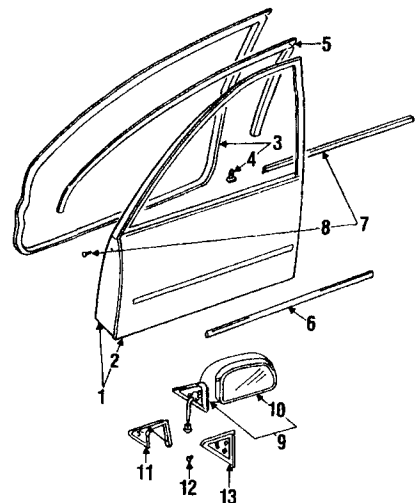
BACK GLASS

1 Glass				
Mitsubishi, 2 door w/o defogger				
clear.....	93-96	304.78	3.5	MB944 895
blue.....	93-96	292.93	3.5	MB970 080
Mitsubishi, 2 door w/defogger				
clear.....	93-96	457.15	3.5	MB944 894
blue.....	93-96	466.17	3.5	MB970 081
green.....	94-96	427.67	3.5	MR108 666
Mitsubishi, 4 door w/o defogger				
clear.....	93-96	292.93	3.5	MB967 760
Mitsubishi, 4 door w/defogger				
clear.....	93-94	439.40	3.5	MB967 762
blue.....	93-96	427.67	3.5	MB967 761
green.....	94-96	427.67	3.5	MB967 761
NAGS, 2 door w/o defogger				
clear.....	93-96	529.80	3.5	FB04752CLN
NAGS, 2 door w/defogger				
clear.....	93-96	1146.10	3.5	FB04751CLN
blue.....	93-96	1146.10	3.5	FB04751BTN
NAGS, 4 door w/o defogger				
clear.....	93-96		3.5	FB04768CLN
blue.....	93-96		3.5	FB04768BTN
NAGS, 4 door w/defogger				
clear.....	93-96	.00	3.5	FB04767CLN
blue.....	93-96	679.90	3.5	FB04767BTN
2 fastener				
93-94	2.38			MB344 738
95-96				NOT LISTED
3 spacer				
93-96	1.17			MB814 156
4 Weatherstrip Molding				
93-96	20.08			MB292 508
5 upper				
2 door.....	93-96	8.33#	3.5	MB696 994
4 door.....	93-96	7.55#	3.5	MB696 792
6 lower				
2 door.....	93-96	20.47	0.5=	MB696 795
4 door.....	93-96	20.67	0.5=	MB696 794
7 clip				
93-96	1.17			MB814 176

LABOR: Included in back glass R&R.

FRONT DOOR

Except Door Shell or Door Outer Panel R&R, all operation times in the following group are after trim panel is removed.



6212380

REFINISHING NOTES

Add for stone guard if required. See Guide to Estimating.

Refn door shell exterior surface only

2 door.....	93-96	p2.4
4 door.....	93-96	p2.3
edges		
inner panel.....	93-96	p.5
outer panel.....	93-96	p.5

Refn outer panel exterior surface only

2 door.....	93-96	p2.4
4 door.....	93-96	p2.3
edges		
inner panel.....	93-96	p.5
outer panel.....	93-96	p.5

ADD IF REQUIRED

R&R door shell add for power units			93-96	0.4
add for mirror			93-96	0.5
R&R outer panel add for power units			93-96	0.4
add for mirror			93-96	0.5

R&I door assy R&I OPERATIONS

w/o power units.....	93-96B	0.6
w/power units.....	93-96B	1.1
R&I trim panel	93-96B	0.4

PARTS AND R&R OPERATIONS**DOOR & COMPONENTS**

1 Door shell				
2 door.....	(p3.4) 93-94R	383.77	4.0	MR179 648
	(p3.4) 93-94L	383.77	4.0	MR179 647
	(p3.4) 95-96R	383.77	4.0	MR179 648
	(p3.4) 95-96L	383.77	4.0	MR179 647
4 door.....	(p3.3) 93-94R	396.93	4.0	MR179 646
	(p3.3) 93-94L	396.93	4.0	MR179 645
	(p3.3) 95-96R	396.93	4.0	MR179 646
	(p3.3) 95-96L	396.93	4.0	MR179 645
2 Outer panel				
2 door.....	(p2.4) 93-96R	138.45	5.0	MB861 642
	(p2.4) 93-96L	138.45	5.0	MB861 641
4 door.....	(p2.3) 93-96R	143.10	5.0	MB861 634
	(p2.3) 93-96L	143.10	5.0	MB861 633
3 Weatherstrip around door				
2 door.....	93-96R	46.65	0.5=	MB827 428
	93-96L	46.65	0.5=	MB827 427
4 door.....	93-96R	47.79	0.5=	MR101 188
	93-96L	47.79	0.5=	MR101 187
4 clip				
5 upper inner	93-96	.72#		MB270 602
2 door.....	93 R	34.32	0.7	MB923 966
	93 L	34.32	0.7	MB923 965
	94 R	34.32	0.7	MB923 966
	94 L	43.71	0.7	MB827 421
	95-96R	43.49	0.7	MB827 422
	95-96L	43.71	0.7	MB827 421
4 door.....	93 R	35.00	0.7	MB923 964
	93 L	35.70	0.7	MB923 963
	94 R	35.00	0.7	MB923 964
	94 L	43.71	0.7	MB819 673
	95-96R	43.49	0.7	MB819 674
	95-96L	43.71	0.7	MB819 673

CONTINUED

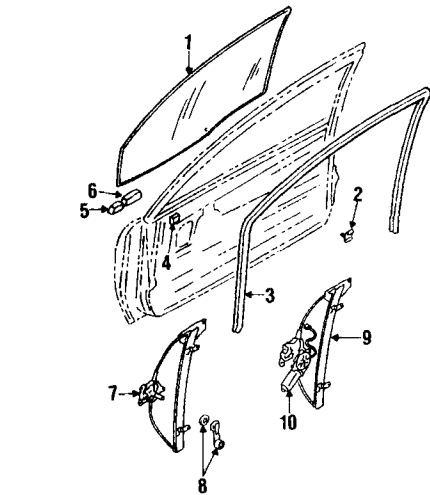
1993-96 MITSUBISHI MIRAGE

ARP 6212

FRONT DOOR (CONT)

Molding				
6 body side				
2 door	93-96B	69.37#	0.3=	MB794 077
4 door	93-94B	20.67#	0.2=	MB696 751
	95-96B	20.67#	0.2=	MB696 751
7 bell weatherstrip				
2 door	93-96R	25.08#	0.3=	MB827 420
	93-96L	25.08#	0.3=	MB827 419
4 door	93-96R	25.08#	0.3=	MB819 644
	93-96L	25.08#	0.3=	MB819 643
8 clip	93-96	.71		MS470 073
Mirror				
9 w/o remote control, left side only				
2 door	93-94L	89.60	0.5=	MB821 375
	95-96L	93.22	0.5=	MB821 317
4 door	93-96L	93.22	0.5=	MB696 917
w/remote control, manual				
2 door	93-96R	101.95#	0.5=	MB821 334
	93-96L	113.47#	0.5=	MB821 321
4 door	93-96R	113.47#	0.5=	MB696 934
	93-96L	117.97#	0.5=	MB696 921
w/remote control, electric				
2 door	93-96R	136.37#	0.5=	MB975 735
	93-96L	137.72#	0.5=	MB975 729
4 door	93-94R	132.40#	0.5=	MB973 888
	93-94L	131.12#	0.5=	MB798 935
	95-96R	113.47#	0.5=	MB696 934
	95-96L	117.97#	0.5=	MB696 921
10 Glass	93-96R	47.07		MB696 852
	93-96L	47.93		MB696 855
Cover				
11 inner	93-94R	5.88#		MB814 110
	93-94L	7.63#		MB814 099
	95-96R	5.88#		MB814 110
	95-96L	4.79#		MB814 101
12 clip	93-96	.46		MB814 169
Blank cover				
13 right side	93	7.48		MB814 098
	94-96			NOT LISTED

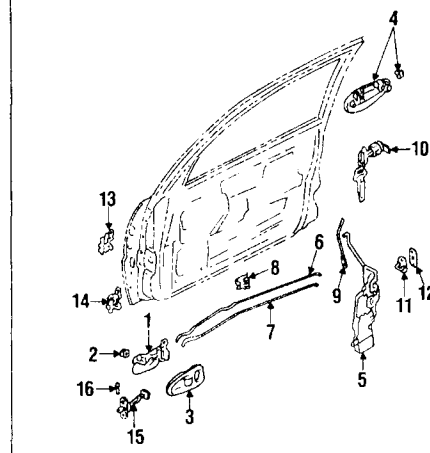
PARTS: Order by color & description.
 1 LABOR: Does not include time to gain access.
 2 PARTS: Part included with door weatherstrip.



GLASS & HARDWARE				
Glass				
2 door				
clear	93-96R	117.17	0.6=	MB799 293
	93-96L	117.17	0.6=	MB799 292
blue	93-96R	117.17	0.6=	MB794 121
	93-96L	117.17	0.6=	MB794 119
Mitsubishi, 4 door				
clear	93-96R	97.65	0.6=	MB799 040
	93-96L	97.65	0.6=	MB799 039
blue	93-96R	93.20	0.6=	MR718 455
	93-96L	93.20	0.6=	MR718 454
green	94-96R	93.20	0.6=	MR718 455
	94-96L	93.20	0.6=	MR718 454
NAGS, 2 door				
clear	93-96R	259.00	0.6=	FD04747CLN
	93-96L	259.00	0.6=	FD04748CLN
blue	93-96R	259.00	0.6=	FD04747BTN
	93-96L	259.00	0.6=	FD04748BTN
NAGS, 4 door				
clear	93-96R		0.6=	FD04761CLN
	93-96L		0.6=	FD04762CLN
blue	93-96R	169.25	0.6=	FD04761BTN
	93-96L	169.25	0.6=	FD04762BTN

2 Glass holder	93-96	2.58		MB517 810
Run channel				
3 upper				
2 door	93-96R	32.48	0.8=	MB827 358
	93-96L	33.13	0.8=	MB827 357
4 door	93 R	32.17	0.8=	MB830 890
	93 L	35.93	0.8=	MB830 889
	94-96R	32.17	0.8=	MB830 890
	94-96L	35.93	0.8=	MB830 889
lower rear				
2 door	93-96R	8.52		MB827 370
	93-96L	8.52		MB827 369
4 door	93-96R	8.52		MB819 524
	93-96L	8.52		MB819 523
Seal				
4 inner				
2 door	93-96	.75		MB827 439
4 door	93-96	.75		MB819 703
5 outer, front	93-96	.88		MB830 080
4 door	93-96	.88		MB830 079
6 outer, rear				
2 door	93-96	1.33		MB827 437
4 door	93-96	1.33		MB819 701
Regulator				
2 door, manual trans				
S	93-96R	35.40	0.6=	MB827 404
	93-96L	35.40	0.6=	MB827 403
ES & LS	93-96R	35.40	0.6=	MB827 402
	93-96L	35.40	0.6=	MB827 401
4 door, manual				
1.5 liter	93-94R	35.73	0.6=	MB819 538
	93-94L	35.73	0.6=	MB819 537
1.8 liter	93-94R	35.40	0.6=	MB819 536
	93-94L	35.40	0.6=	MB819 535
all	95-96R	35.40	0.6=	MB819 536
	95-96L	35.40	0.6=	MB819 535
9 power				
4 door	93-96R	34.70	0.7=	MB927 164
	93-96L	34.70	0.7=	MB927 163
8 Handle	93-96	9.27#		MB960 400
10 Motor	93-95R	141.58	0.7=	MB827 384
	93-95L	141.58	0.7=	MB827 383
	96		0.7=	NOT LISTED

1 PARTS: Order by color and description.



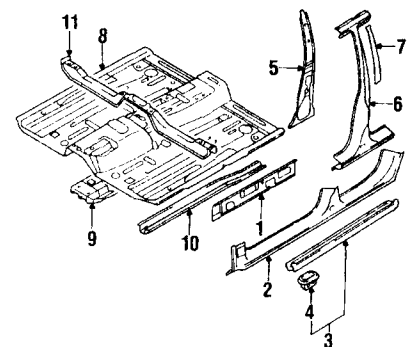
LOCK HARDWARE				
Handle, inside				
2 door	93-96R	11.05#	0.3=	MB794 030
	93-96L	11.05#	0.3=	MB794 028
4 door	93-96R	10.95#	0.3=	MB794 020
	93-96L	10.95#	0.3=	MB794 018
2 clip	93-96	.50		MU481 193
cover				
2 door	93-96R	5.17#		MB794 034
	93-96L	5.17#		MB794 032
4 door	93 R	5.17#		MB960 544
	93 L	5.17#		MB960 543
	94-96R	5.17#		MB794 024
	94-96L	5.17#		MB794 022
4 Handle, outside	(p.5) 93-96R	27.78	0.5=	MB819 552
	(p.5) 93-96L	27.78	0.5=	MB819 551
Latch				
2 door	93 R	58.03#	0.5=	MB830 412
	93 L	58.03#	0.5=	MB830 411
	94 R	58.03#	0.5=	MB830 412
	94 L	49.68#	0.5=	MB908 549
	95-96R	49.44#	0.5=	MB908 550
	95-96L	49.68#	0.5=	MB908 549
4 door				
manual locks	93 R	58.03#	0.5=	MB830 372

	93 L	58.03#	0.5=	MB830 371
	94 R	58.03#	0.5=	MB830 372
	94 L	46.90#	0.5=	MB923 699
	95-96R	46.64#	0.5	MB923 700
	95-96L	46.90#	0.5	MB923 699
power locks	93 R	83.50#	0.5=	MB830 374
	93 L	83.50#	0.5=	MB830 373
	94 R	83.50#	0.5=	MB830 374
	94 L	142.96#	0.5=	MR153 467
	95-96R	157.76#	0.5	MB923 702
	95-96L	142.96#	0.5	MR153 467
Lock rod				
6 inside handle				
2 door	93-96R	4.58	0.2=	MB827 558
	93-96L	4.58	0.2=	MB827 557
4 door	93-96R	4.58	0.2=	MB827 590
	93-96L	4.58	0.2=	MB827 589
7 inside lock, 2 door				
	93-96R	4.58	0.2=	MB827 560
	93-96L	4.58	0.2=	MB827 559
inside lock, 4 door				
manual windows	93-96R	4.58	0.2=	MB827 592
	93-96L	4.58	0.2=	MB827 591
power windows	93-96R	4.58	0.2=	MB827 594
	93-96L	4.58	0.2=	MB827 593
9 outside lock				
2 door	93-96R	3.50	0.2=	MB830 416
	93-96L	3.50	0.2=	MB830 415
4 door	93-96R	3.50	0.2=	MB827 588
	93-96L	3.50	0.2=	MB827 587
8 Holder	93-96	1.13		MB105 260
Lock knob				
4 door	93-96	2.00		MB717 039
10 Cyl & keys				
manual windows	93-94R	25.27	0.3=	MB927 048
	93-94L	24.75	0.3=	MB927 045
	95-96R	25.27	0.3	MB927 048
	95-96L	24.75	0.3	MB927 045
power windows	93 R	25.27	0.3=	MB927 048
	93 L	24.75	0.3=	MB927 045
	94 R	24.27	0.3=	MB927 050
	94 L	24.27	0.3=	MB927 047
	95-96R	24.27	0.3	MB927 050
	95-96L	24.27	0.3	MB927 047
	96	5.17	0.3=	MB626 247
11 Striker	93-96B	2.08		MB574 974
12 shim	93-96	2.08		
Hinge				
13 upper	(p.3) 93-96R	26.82#	0.5	MB574 273
	(p.3) 93-96L	26.82#	0.5	MB574 274
14 lower	(p.3) 93-96R	26.82#	0.5	MB574 274
	(p.3) 93-96L	26.82#	0.5	MB574 273
Check arm				
15 door				
2 door	93-96B	9.25	0.3=	MB819 507
4 door	93-96B	8.48	0.3=	MB819 505
16 pin	93-96	.88		MB632 510
# LABOR: After door is removed.				
PARTS: Order by color and description.				

LABOR: After door is removed.

1 PARTS: Order by color and description.

CENTER PILLAR & ROCKER PANEL



REFINISHING NOTES
 Add for stone guard if required. See Guide to Estimating.

OVERLAP OPERATIONS		
R&R rocker panel with hinge pillar off		
deduct	93-96	1.0
R&R rocker panel with center pillar off		
deduct	93-96	1.0

PARTS AND R&R OPERATIONS

CENTER PILLAR & ROCKER

Rocker panel		
---------------------	--	--

1 inner	93-96R	31.23	\$	3.5	MB835 826
	93-96L	30.07	\$	3.5	MB907 813
2 outer					
2 door	(p.3) 93-96R	369.67	\$	7.0	MB835 924
	(p.3) 93-96L	369.67	\$	7.0	MB835 923
4 door	(p.3) 93-96R	376.00	\$	7.0	MB835 906
	(p.3) 93-96L	376.00	\$	7.0	MB835 905
3 Scuff plate					
2 door	93-96R	14.65	†	0.3=	MB794 002
	93-96L	14.65	†	0.3=	MB794 000
4 door					
front	93-96R	11.33	†	0.3=	MB794 006
	93-96L	11.33	†	0.3=	MB794 004
rear	93-96R	7.70	†	0.3=	MB794 010
	93-96L	7.70	†	0.3=	MB794 008
4 clip	93-96	1.50	#		MB918 592
Center pillar					
5 inner	93-96R	37.80	\$	3.3	MB945 046
	93-96L	37.06	\$	3.3	MB945 045
6 outer					
manual windows	93-96R	147.37	\$	5.5	MB945 014
	93-96L	148.83	\$	5.5	MB945 013
power windows	93-96R	110.81	\$	5.5	MB907 798
	93-96L	110.81	\$	5.5	MB907 797
7 Tape	93-96R	16.02		0.3	MB964 301
	93-96L	16.02		0.3	MB964 300
8 Floor pan					
2 door	93-96	408.85			MB907 799
4 door	93-96	425.37			MB835 823
9 Center reinf.	93-96	186.03			MB835 824
10 Sidemember	93-96R	36.42			MB945 028
	93-96L	35.00			MB945 027
11 Crossmember	93-96	87.48		2.0	MB945 010

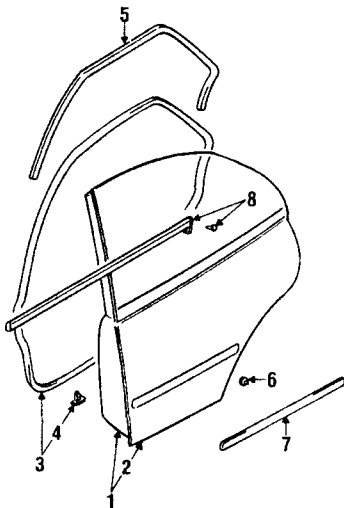
PARTS: Part included with scuff plate.

† PARTS: Order by color.

‡ LABOR: After outer panel is removed.

REAR DOOR

Except Door Shell or Door Outer Panel R&R, all operation times in the following group are after trim panel is removed.



6212420

REFINISHING NOTES

Add for stone guard if required. See Guide to Estimating.

Refrn door shell		
exterior surface	93-96	p.2.3
only		
edges	93-96	p.5
inner panel	93-96	p.5
Refrn outer panel		
exterior surface	93-96	p.2.3
only		
edges	93-96	p.5
inner panel	93-96	p.5

ADD IF REQUIRED

R&R door shell		
add for power		
units	93-96	0.4
R&R outer panel		
add for power		
units	93-96	0.4

R&I OPERATIONS

R&I door assy		
w/o power units	93-96B	0.6
w/power units	93-96B	1.1
R&I trim panel	93-96B	0.4

PARTS AND R&R OPERATIONS

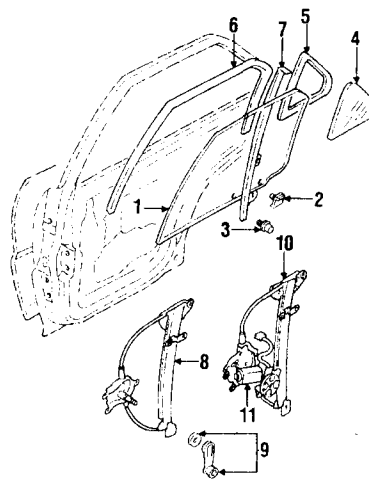
DOOR & COMPONENTS

1 Door shell					
manual windows	(p.3) 93-96R	347.63	4.0		MB907 785
	(p.3) 93-96L	347.63	4.0		MB907 786
power windows	(p.3) 93-95R	347.63	4.0		MB861 644
	(p.3) 93-95L	347.63	4.0		MB861 643
all	(p.3) 96 R	347.63	4.0		MB907 785
	(p.3) 96 L	347.63	4.0		MB907 786
2 Outer panel	(p.2.3) 93-96R	139.03	5.0		MB861 646
	(p.2.3) 93-96L	139.03	5.0		MB861 645
Weatherstrip					
3 around door	93-96R	35.72	0.5=		MR248 424
	93-96L	35.72	0.5=		MR248 423
4 clip	93-96	.72	†		MB270 602
5 upper inner	93-96R	17.77	0.7		MR248 426
	93-96L	16.97	0.7		MR248 425
6 Cushion	93-96	1.58			MB574 963
Molding					
7 body side	93-94B	15.20	#	0.2=	MB696 752
	95-96B	15.20	#	0.2	MB696 752
8 Belt w'strip	93-96R	25.08	†	0.3=	MB819 648
	93-96L	25.08	†	0.3=	MB819 647

PARTS: Order by color & description.

† LABOR: Does not include time to gain access.

‡ PARTS: Part included with door weatherstrip.



6212430

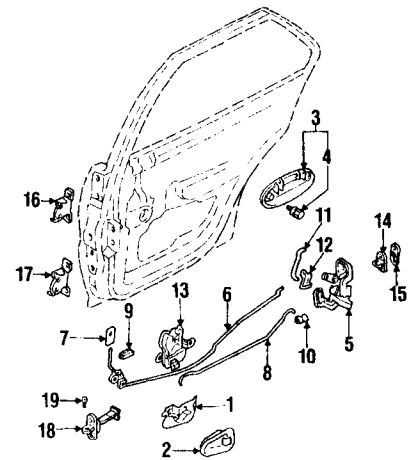
GLASS & HARDWARE

1 Moveable glass					
Mitsubishi					
clear	93-96R	62.50	0.6=		MB799 042
	93-96L	62.50	0.6=		MB799 041
blue	93-96R	58.48	0.6=		MR718 457
	93-96L	58.48	0.6=		MR718 456
green	94-96R	58.48	0.6=		MR718 457
	94-96L	58.48	0.6=		MR718 456
NAGS					
clear	93-96R		0.6	FD04763CLN	
	93-96L		0.6	FD04764CLN	
blue	93-96R	174.15	0.6	FD04763BTN	
	93-96L	174.15	0.6	FD04764BTN	
2 Glass holder	93-96	2.58		MB517 810	
3 bolt	93-96	1.00		MU240 087	
4 Glass					
Mitsubishi, stationary					
clear	93-96R	39.07	0.7	MB799 044	
	93-96L	39.07	0.7	MB799 043	
blue	93-96R	35.83	0.7	MR718 459	
	93-96L	35.83	0.7	MR718 458	
green	94-96R	35.83	0.7	MR718 459	
	94-96L	35.83	0.7	MR718 458	
NAGS, stationary					
clear	93-96R		0.7	FV04765CLN	
	93-96L		0.7	FV04766CLN	
green	93-96R		0.7	FV04765GTN	
	93-96L		0.7	FV04766GTN	
5 Weatherstrip	93-96R	16.33	0.5=		MB819 640
	93-96L	16.33	0.5=		MB819 639
6 Run channel	93-96R	32.48	0.8		MB819 520
	93-96L	32.48	0.8		MB819 519
7 Division channel	93-96R	28.42	0.8		MB819 528
	93-96L	28.98	0.8		MB819 527
Regulator					
manual					
S	93 R	35.40	±	0.5	MB819 548
	93 L	35.73	±	0.5	MB819 547
ES & LS	93 R	35.40	±	0.5	MB819 546
	93 L	35.40	±	0.5	MB819 545
all	94-96R	35.40	±	0.5	MB819 546
	94-96L	35.40	±	0.5	MB819 545

10 power	93-96R	34.70	0.6	MB927 162
	93-96L	34.70	0.6	MB927 161
9 Handle	93-96	9.45	†	MB793 921
11 Motor	93-96R	141.58	0.6	MB827 386
	93-96L	141.58	0.6	MB827 385

† PARTS: Order by color.

‡ PARTS: Order by description.



6212440

LOCK HARDWARE

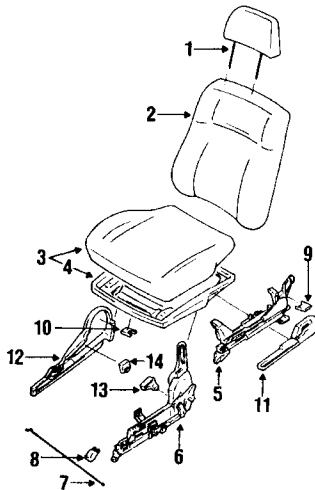
1 Handle, inside	93-96R	10.95	†	0.3=	MB794 020
	93-96L	10.95	†	0.3=	MB794 018
2 Cover	93-96R	5.17	†		MB794 024
	93-96L	5.17	†		MB794 022
3 Handle, outside					
S	93-94R	27.50	0.5=		MB819 558
	93-94L	27.50	0.5=		MB819 557
ES & LS	93-94R	27.50	†	0.5=	MB819 558
	93-94L	26.42	†	0.5=	MB794 092
all	95-96R	27.50	0.5		MB819 558
	95-96L	27.50	0.5		MB819 557
4 snap	93-96R	.71			MU481 091
	93-96L	.71			MU481 090
5 Latch	93-96R	43.15	#	0.5=	MB830 392
	93-96L	43.15	#	0.5=	MB830 391
Lock rod					
6 inside lock					
manual windows	93-96R	6.79	#	0.2=	MB830 394
	93-96L	6.79	#	0.2=	MB830 393
power windows	93-96R	6.79	#	0.2=	MB830 396
	93-96L	6.79	#	0.2=	MB830 395
8 handle, inside	93-96R	4.58	#	0.2=	MB843 974
	93-96L	4.58	#	0.2=	MB843 973
11 handle, outside	93-96R	3.50	#	0.2=	MB843 972
	93-96L	3.50	#	0.2=	MB843 971
10 clip	93-96R	.50			MU481 194
	93-96L	.50			MU481 193
12	93-96	1.13			MB590 578
7 Lock knob	93-96	2.00			MB717 039
9 Cushion	93-96	1.13			MB134 382
13 Actuator	93-95B	141.75	0.4=		MB819 445
	96				NOT LISTED
14 Striker	93-96B	5.17	0.3=		MB626 247
15 shim	93-96	2.08			MB574 974
Hinge					
16 upper	(p.3) 93-96R	26.82	±	0.5	MB546 472
	(p.3) 93-96L	26.82	±	0.5	MB546 471
17 lower	(p.3) 93-96R	24.98	±	0.5	MB819 362
	(p.3) 93-96L	24.75	±	0.5	MB819 361
Check arm					
18 door	93-94B	19.00	0.3=		MB517 469
	95-96B	19.00	0.3		MB517 469
19 pin	93-96	.88			MB632 510

PARTS: Order by description.

† PARTS: Order by color & description.

‡ LABOR: After door is removed.

SEATS & TRACKS



6212450

OVERLAP OPERATIONS

R&R seat tracks 93-96 1.0

PARTS AND R&R OPERATIONS

FRONT SEATS

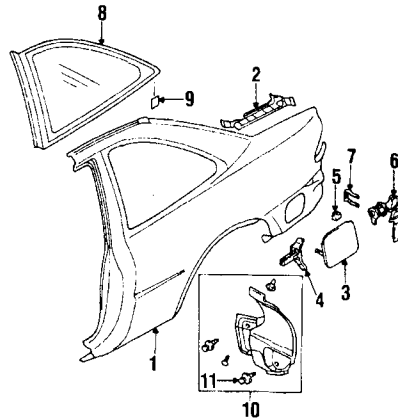
1 Headrest				
2 door.....	93	107.80#	0.2	MB969 604
	94	113.98#	0.2	MR726 193
	95-96	109.43#	0.2	MR740 177
4 door.....	93	103.30#	0.2	MR700 111
	94	113.98#	0.2	MR726 271
	95-96	113.98#	0.2	MR726 270
2 Seat back				
2 door.....	93 R	453.35#	0.6	MR703 130
	93 L	453.35#	0.6	MR703 125
	94 R	493.22#	0.6	MR726 219
	94 L	493.22#	0.6	MR726 217
	95-96R	474.65#	0.6	MR740 195
	95-96L	474.65#	0.6	MR740 193
4 door.....	93 R	462.42#	0.6	MR703 157
	93 L	462.42#	0.6	MR703 160
	94-96R	493.22#	0.6	MR726 291
	94-96L	493.22#	0.6	MR726 290
3 Seat cushion				
2 door.....	93 R	453.35#	0.6	MR703 098
	93 L	462.42#	0.6	MR703 093
	94 R	493.22#	0.6	MR726 203
	94 L	493.22#	0.6	MR726 202
	95-96R	493.22#	0.6	MR726 206
	95-96L	474.65#	0.6	MR740 188
4 door.....	93 R	462.42#	0.6	MR703 119
	93 L	462.42#	0.6	MR703 113
	94-96R	493.22#	0.6	MR726 282
	94-96L	493.22#	0.6	MR726 283
4 Frame.....	93-96	26.97		MB915 750

SEATS & TRACK COMPONENTS

Seat track				
w/o height adjustment				
5 inner.....	93-96R	41.68#	0.6	MB916 554
	93-96L	39.58#	0.6	MB916 553
6 outer.....	93-96R	41.72#	0.6	MB874 482
	93-96L	48.17#	0.6	MB874 481
w/height adjustment				
driver side only.....	93-96	230.67	0.6	MB916 552
7 Wire.....	93-96	1.92		MB874 502
Track end cover				
8 front.....	93-96	1.71#	0.1	MB778 517
rear.....				
9 inner.....	93-96	2.50#	0.1	MB874 500
10 outer.....	93-96	2.50#	0.1	MB873 969
Side shield				
11 inner.....	93-96R	24.13#	0.3=	MB703 174
	93-96L	24.13#	0.3=	MB703 171
12 outer.....	93-94R	13.28#	0.3=	MR703 180
	93-94L	13.39#	0.3=	MB703 177
	95-96R	14.53#	0.3	MB969 477
	95-96L	13.56#	0.3	MB969 473
Adjust knob				
13 recline.....	93-96R	4.25#		MB797 369
	93-96L	4.25#		MB797 367
14 slide.....	93-96R	8.33#		MB797 365
	93-96L	8.33#		MB797 363

PARTS: Part numbers & prices are for estimating purposes only. Order by color & description.

QUARTER PANEL



6212460

QUARTER PANEL

2 DOOR

REFINISHING NOTES

Add for stone guard if required. See Guide to estimating.

Refn quarter panel
exterior surface
 only 93-96 p.2.7
edges & pockets 93-96 p.3
lock pillar 93-96 p.5

OVERLAP OPERATIONS

R&R quarter panel
with rocker off
 deduct 93-96 1.0
R&R quarter panel
with roof off
 deduct 93-96 3.0

R&I OPERATIONS

R&I trim panel 93-96B 0.6

SECTIONING OPERATIONS

Scn qtr panel
cut in window
 opening 93-96R p.3.5 ± 12.0
 93-96L p.3.5 ± 11.0

PARTS AND R&R OPERATIONS

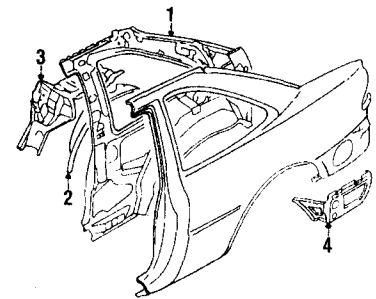
1 Outer panel.....	(p.3.5) 93-96R	346.33	15.0	MB907 920
	(p.3.5) 93-96L	346.33	14.5	MB907 919
2 extension.....	(p.3) 93-96R	17.32	1.0	MB907 926
	(p.3) 93-96L	17.32	1.0	MB907 925
Body side mldg.....	93-96B	35.37#	0.3=	MB794 078
3 Fuel door				
w/o opener.....	(p.5) 93-96	24.38	0.3	MB907 933
w/opener.....	(p.5) 93-96	24.38	0.3	MB907 932
4 Latch				
w/o opener.....	93-96	3.50		MB023 336
w/opener.....	93-96	6.04		MB023 335
5 clip				
.....	93-96	.71		MB642 442
6 Cyl & keys				
.....	93-94	24.22	0.3	MB927 051
	95-96	24.22	0.3	MB927 051
7 retainer				
.....	93-96	.88		MB402 326
8 Release cable				
.....	93-96	†		SEE FOOTNOTE
9 Qtr glass				
Mitsubishi.....				
clear.....	93-96R	165.75	3.0	MB970 079
	93-96L	165.75	3.0	MB970 076
blue.....	93-96R	165.75	3.0	MB970 077
	93-96L	165.75	3.0	MB970 074
NAGS.....				
clear.....	93-96R		3.0	FQ04749CLN
	93-96L		3.0	FQ04750CLN
blue.....	93-96R		3.0	FQ04749BTN
	93-96L		3.0	FQ04750BTN
9 fastener				
.....	93-96	1.13#		MB814 178
10 Splash shield				
.....	93-96R	6.04	0.3=	MB907 186
	93-96L	6.04	0.3=	MB907 185
11 clip				
.....	93-96	1.29#		MB344 728

PARTS: Order by description.

† PARTS: Part included with splash shield.

‡ LABOR: See general information page under sectioning.

† PARTS: Part located in the TRUNK LID & LAMPS group.



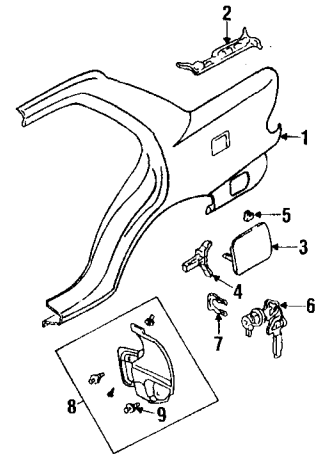
6212470

INNER COMPONENTS

2 DOOR

1 Inner qtr panel.....	93-96R	259.77#	5.0	MB907 922
	93-96L	259.77#	5.0	MB907 921
2 Wheelhouse.....	93-96R	85.58#	2.5	MB835 954
	93-96L	84.73#	2.5	MB835 953
brace				
3 rear shelf.....	93-94R	81.20		MB907 924
	93-94L	81.19		MB907 923
	95-96R	87.88		MB835 958
	95-96L	87.88		MB835 957
4 floor side.....	93-96R	18.73		MB835 952
	93-96L	17.82		MR208 811

LABOR: After quarter panel is removed.
 † LABOR: After outer structure is removed.



6212480

QUARTER PANEL

4 DOOR

REFINISHING NOTES

Add for stone guard if required. See Guide to estimating.

Refn quarter panel
exterior surface
 only 93-96 p.2.2
edges & pockets 93-96 p.3
lock pillar 93-96 p.5

OVERLAP OPERATIONS

R&R quarter panel
with rocker off
 deduct 93-96 1.0
R&R quarter panel
with roof off
 deduct 93-96 4.0

R&I OPERATIONS

R&I trim panel 93-96B 0.6

SECTIONING OPERATIONS

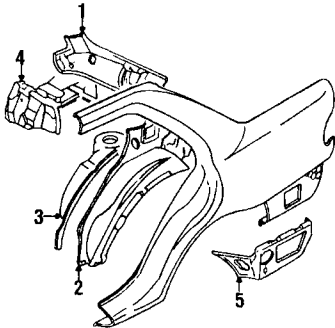
Scn qtr panel
cut at belt line..... 93-96R p.3.0 ± 10.0
 93-96L p.3.0 ± 9.5

PARTS AND R&R OPERATIONS

1 Outer panel.....	(p.3.0) 93-96R	345.68	13.0	MB835 904
	(p.3.0) 93-96L	345.68	12.5	MB835 903
2 Upper extn.....	93-96R	17.72	1.0	MB907 558
	93-96L	17.72	1.0	MB907 557
3 Fuel door				
w/o opener.....	(p.3) 93-96	24.97	0.3	MB861 659
w/opener.....	(p.3) 93-96	24.97	0.3	MB861 658
4 Latch				
w/o opener.....	93-96	3.50		MB023 336

5 w/opener	93-96	6.04		MB023 335
clip	93-96	.71		MB642 442
6 Cyl & keys	93-96	24.22	0.3	MB927 051
7 retainer	93-96	.88		MB402 326
8 Splash shield	93-96R	5.88	0.3=	MB912 954
	93-96L	5.88	0.3=	MB912 953
9 clip	93-96	1.29		MB344 728

† PARTS: Part included with splash shield.
‡ LABOR: See general information page under sectioning.



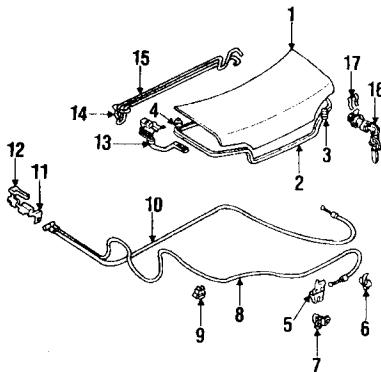
6212490

INNER COMPONENTS 4 DOOR

1 Inner qtr panel				
upper	93-96R	54.42#	3.5	MB835 948
	93-96L	55.50#	3.5	MB835 947
2 lower	93-96R	79.03	4.0	MB835 942
	93-96L	78.27	4.0	MB835 941
3 Wheelhouse	93-96R	85.58# s	2.5	MB835 954
	93-96L	84.73# s	2.5	MB835 953
brace				
shelf	93-96R	86.25		MB835 956
	93-96L	84.57		MB835 955
5 rear floor	93-96R	18.73		MB835 952
	93-96L	17.82		MR208 811

LABOR: After quarter panel is removed.
† LABOR: After outer structure is removed.

TRUNK LID



6212500

REFINISHING NOTES
Refn trunk lid underside 93-96 p1.3

R&I OPERATIONS
R&I trunk lid 93-96 0.4

PARTS AND R&R OPERATIONS

LID & COMPONENTS 2 DOOR

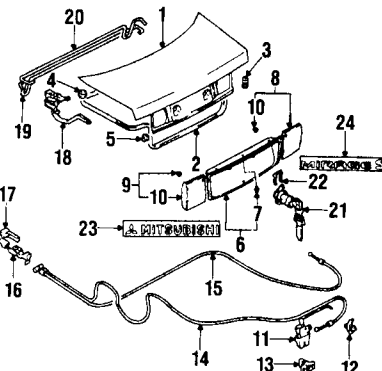
1 Trunk lid				
w/o spoiler	(p2.5) 93-96	202.37	1.2	MB861 657
w/spoiler	(p2.5) 93-96	202.37	1.2	MB861 657
2 Weatherstrip	93-96	55.14	0.5=	MB819 938
3 Bumper	93-96	1.79		MB926 555
4 Plug	93-96	.88		MU670 031
5 Latch	93-96	14.45	0.5=	MB819 904
6 clip	93-96	.83		MB270 319
7 Striker	93-96	7.58	0.3=	MB197 190
Release cable				
8 trunk lid	93	15.42	1.0	MB888 698
	94-96	20.12	1.0	MB819 920
10 fuel door	93	13.58	2.5	MB888 708
	94-96	13.98	2.5	MB023 391
9 clip	93-96	.33		MB011 808
11 Handle	93	10.95#		MB960 395

12 Knob	94-96	11.17		MR722 441
	93-94	1.71		MB402 317
	95-96			NOT LISTED
13 Hinge	(p.5) 93-96R	31.67#	0.5	MB861 678
	(p.5) 93-96L	30.92#	0.5	MB861 677
Torsion bar				
14 w/o spoiler	93-96R	21.80	0.3=	MB926 307
	93-96L	21.80	0.3=	MB926 306
15 w/spoiler	93-96R	33.11	0.3=	MR101 220
	93-96L	33.11	0.3=	MR101 219
16 Cyl & keys	93-94	22.02	0.4=	MB923 955
	95-96	21.62	0.4	MR101 459
17 retainer	93-96	.88		MB402 326
Nameplate	93-96			SEE FOOTNOTE

LABOR: After lid and shelf trim are removed.

† PARTS: Order by color.

‡ PARTS: Part located in REAR BODY group.



6212520

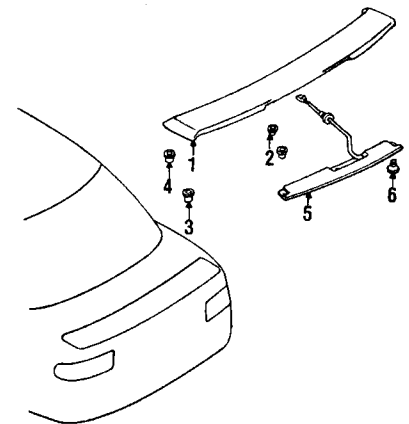
LID & COMPONENTS 4 DOOR

1 Trunk lid	(p2.5) 93-96	222.90	1.2	MB945 091
2 Weatherstrip	93-96	57.83	0.5=	MB819 935
3 Bumper	93-96	1.79		MB926 555
4 Plug	93-96	.88		MU670 031
5 Damper	93-96	2.58		MB022 092
Finish panel				
6 inner	93-96	44.20	0.4=	MB907 191
outer				
8 black	93-96R	18.73	0.3=	MB907 194
	93-96L	18.37	0.3=	MB907 193
9 red	93-94R	18.90	0.3=	MB907 196
	93-94L	18.37	0.3=	MB907 195
	95-96B		0.3	NOT LISTED
7 clip	93-96	1.38		MB253 964
10 nut	93-96	.08		MS440 502
11 Latch	93-96	20.87	0.5=	MB819 898
12 clip	93-96	.83		MB270 319
13 Striker	93-96	6.96	0.3=	MB197 499
Release cable				
14 trunk lid	93-96	15.75	1.0	MB819 947
15 fuel lid	93-96	13.98	2.5	MB023 391
16 Handle	93	10.95#		MB960 395
	94-96	11.17		MR722 441
17 Knob	93-96	1.71		MB402 317
18 Hinge	(p.5) 93-96R	31.23#	0.5	MB861 676
	(p.5) 93-96L	31.23#	0.5	MB861 675
19 Torsion bar	93-96R	32.82	0.3=	MB926 303
	93-96L	32.16	0.3=	MB926 302
20 Cyl & keys	93-94	27.78#	0.4=	MB923 956
	95-96	27.39#	0.4	MR101 460
22 retainer	93-96	.88		MB402 326
Nameplate				
23 Mitsubishi	93-96	21.40#	0.2=	MB952 388
24 Mirage S	93-96	21.40#	0.2=	MB952 386
Mirage ES	93-96	21.40#	0.2=	MB952 383
Mirage LS	93-96	21.40#	0.2=	MB952 382

LABOR: After lid and shelf trim are removed.

† PARTS: Order by color & description.

‡ PARTS: Order by description.



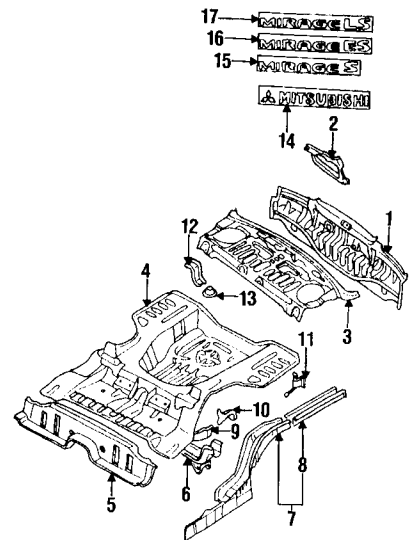
6212510

SPOILER

1 Spoiler	(p1.0) 93-96	728.97	0.5	MR700 235
2 nut	93-96	.08		MS440 502
Cap				
3 outer	93-96	1.17		MB814 163
4 inner	93-96	.50		MB646 885
5 High mount lamp	93	#	0.3	SEE FOOTNOTE
	94-96	#	0.3	SEE FOOTNOTE
6 screw	93	#		SEE FOOTNOTE
	94-96	#		SEE FOOTNOTE

PARTS: Part located in REAR LAMPS group, under HIGH MOUNTED LAMP subgroup.

REAR BODY & FLOOR



6212530

REFINISHING NOTES

Refn rear body panel inner panel 93-96 p.8

OVERLAP OPERATIONS

R&R rear body panel with 1 qtr panel off 93-96 5.5
with 2 qtr panels off 93-96 3.5

PARTS AND R&R OPERATIONS

REAR FLOOR & RAILS

1 Rear body panel				
2 door	(p1.5) 93-96	170.25<	6.5	MB945 089
4 door	(p1.5) 93-96	136.88<	6.5	MB945 198
2 Lamp housing				
2 door	93-96R	23.58	2.0	MB835 962
	93-96L	23.58	2.0	MB835 961
4 door	93-96R	27.07	2.0	MB835 960
	93-96L	27.07	2.0	MB835 959
Panel				
3 rear shelf	93-96	160.20		MB907 931
2 door				

CONTINUED

REAR BODY & FLOOR (CONT)

4 door	93-96	148.64		MB945 088
4 Rear floor pan (p1.5)	93-96	506.12	16.5	MR208 883
5 Front extn	93-96	214.60		MB835 843
6 Crossmember	93-96	115.83	3.5	MR208 887
7 Sidemember assy				
2 door	93-94R	328.77	s 7.0	MB945 056
	93-94L	322.32	s 7.0	MB945 055
	95-96R	375.69	s 7.0	MB945 058
	95-96L	375.69	s 7.0	MB945 057
4 door	93-94R	316.00	s 7.0	MB945 054
	93-94L	322.32	s 7.0	MB945 053
	95-96R	299.56	s 7.0	MB907 816
	95-96L	299.56	s 7.0	MB907 815
8 Rear extn	93-96R	119.88	s 2.0	MB945 166
	93-96L	121.08	s 2.0	MB945 165
bracket				
9 fuel tank support	93-96R	27.73		MB835 846
	93-96L	27.73		MB835 845
muffler				
10 front	93-96	10.37		MB835 847
11 rear	93-96	7.17		MB945 069
12 jack support	93-96	10.17		MB291 005
13 spare tire	93-96	8.29		MB312 684
Nameplate				
2 door				
14 Mitsubishi	93-96	21.40	# 0.2=	MB952 388
15 Mirage S	93-94	21.40	# 0.2=	MB952 385
	95-96	21.40	# 0.2=	MB952 386
16 Mirage ES	93-96	21.40	# 0.2=	MB952 383
17 Mirage LS	93-96	21.40	# 0.2=	MB952 382
4 door				SEE FOOTNOTE

PARTS: Order by color.

¶ LABOR: After suspension, fuel tank and all necessary bolted on parts are removed. Includes R&R rear body panel.

‡ LABOR: After suspension, fuel tank and all necessary bolted on parts are removed.

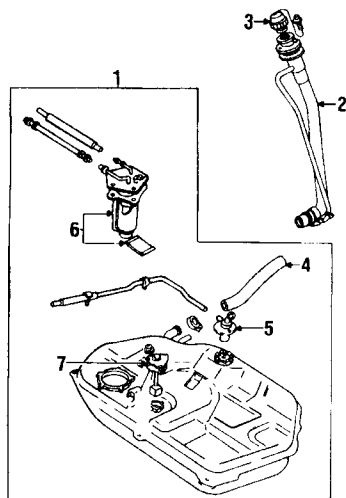
† LABOR: After suspension, fuel tank, bumper and all necessary bolted on parts are removed.

© LABOR: After bumper, fuel tank and all necessary bolted on parts are removed.

* PARTS: Part located in TRUNK LID group.

< LABOR: After bumper is removed.

FUEL SYSTEM



6212560

R&I OPERATIONS

R&I fuel tank..... 93-96 m 1.0

PARTS AND R&R OPERATIONS

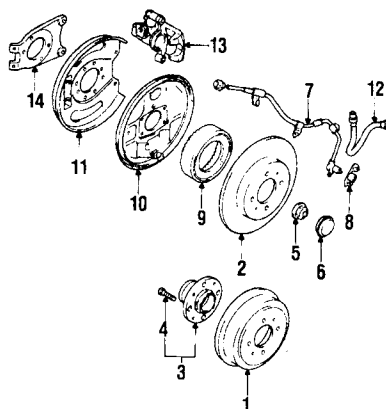
FUEL SYSTEM COMPONENTS

1 Fuel tank assy	93-96	762.00	m 1.3	MB678 830
2 Filler neck	93-96	25.73	m 0.8	MB887 050
3 Cap	93-96	11.47		MR271 611
4 Filler neck	93-96	16.38	#	MB908 026
5 Safety valve	93-96	27.22	#	MR526 922
6 Fuel pump assy	93-96	337.47	m 1.0	MB912 304
7 Gauge	93-96	39.02	# m 0.7	MB818 634
Vapor canister	93-96			SEE FOOTNOTE

PARTS: Part included in fuel tank assembly.

¶ PARTS: Part located in EMISSION SYSTEM group.

REAR SUSPENSION



6212570

ADD IF REQUIRED

Wheel alignment				
align rear wheels	93-96	m 1.0		
align four wheels	93-96	m 1.5		
Bleed brake system				
w/o ABS	93-96	m 0.3		
w/ABS	93-96	m 0.5		

OVERHAUL OPERATIONS

O/H suspension				
one side	93-96B	m 3.5		
both sides	93-96	m 6.8		

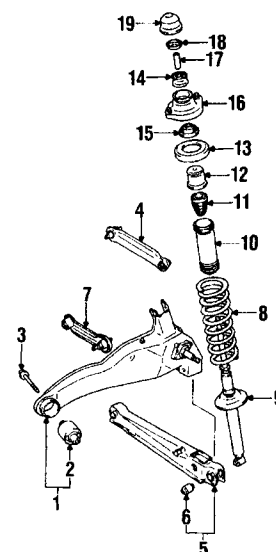
R&I OPERATIONS

R&I suspension				
one side	93-96B	m 2.5		
both sides	93-96	m 4.8		

PARTS AND R&R OPERATIONS

BRAKE COMPONENTS

1 Brake drum				
7" drum	93-94B	96.88	m 0.8	MB699 290
	95-96B		m 0.8	NOT LISTED
8" drum	93-96B	96.88	m 0.8	MB699 291
2 Rotor	93-94B	86.40	m 0.8	MB857 762
	95-96B		m 0.8	NOT LISTED
3 Hub assy				
drum brakes	93-94B	84.25	m 0.8	MB844 919
disc brake	93-94B	85.33	m 0.8	MB663 630
all	95-96B	84.25	m 0.8	MB844 919
4 stud	93-96	1.71		MB303 869
5 lock nut	93-96	6.21		MB584 600
6 Grease cap	93-96	1.33		MB809 360
7 ABS sensor	93-94R	261.87	m 0.8	MB699 523
	93-94L	261.87	m 0.8	MB699 522
	95-96B		m 0.8	NOT LISTED
8 bracket	93-94R	8.96		MB699 528
	93-94L	9.15		MB699 527
	95-96B			NOT LISTED
9 Rotor	93-94	128.03		MB699 525
	95-96			NOT LISTED
Backing plate				
10 drum brakes				
7" drum	93-94R	39.33	m 1.1	MB668 739
	93-94L	40.12	m 1.1	MB668 738
8" drum	93-94R	38.03	m 1.1	MB928 791
	93-94L	38.03	m 1.1	MB928 790
all	95-96R	44.01	m 1.1	MR205 230
	95-96L	44.01	m 1.1	MR205 229
11 disc brake	93-94B	12.60	m 1.1	MB857 770
	95-96B		m 1.1	NOT LISTED
12 Flex hose				
drum brakes	93-94B	11.95	m 0.7	MR129 787
disc brake	93-94B	21.75	m 0.7	MB699 558
all	95-96B	11.95	m 0.7	MR129 787
13 Caliper	93-94R	129.00	m 0.8	RMR20 5147
	93-94L	129.00	m 0.8	RMR20 5146
	95-96B			NOT LISTED
14 Adapter	93-94R	43.91		MB857 765
	93-94L	44.78		MB857 764
	95-96B			NOT LISTED



6212580

SUSPENSION COMPONENTS

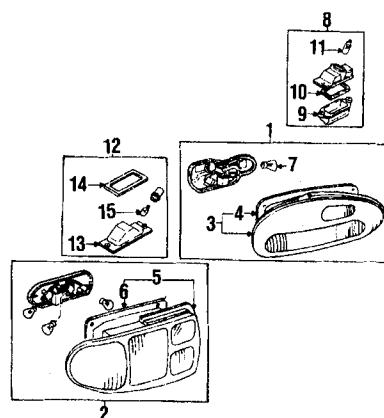
1 Trailing arm				
w/o ABS	93-94R	167.98	m 2.0	MR297 388
	93-94L	167.98	m 2.0	MR297 387
w/ABS	93-94R	167.98	m 2.0	MR297 388
	93-94L	191.27	m 2.0	MR911 323
all	95-96R	167.98	m 2.0	MR297 388
	95-96L	167.98	m 2.0	MR297 387
2 bushing	93	20.38	¶	MR102 063
	94-96	20.38	¶	MR102 063
3 bolt	93-96	3.96		MB809 345
Control arm				
upper	93-96R	35.73	m 0.6	MB809 221
	93-96L	35.73	m 0.6	MB809 220
lower	93-96R	47.93	m 0.8	MB809 231
	93-96L	47.93	m 0.8	MB809 230
6 bushing	93-95	7.87	‡	MR102 012
	96	8.17	‡	MR403 464
7 Link arm	93-96R	28.03	m 0.6	MR491 348
	93-96L	28.03	m 0.6	MB809 222
8 Spring	93-96B	52.32	# m 1.3	MB809 273
9 Strut				
2 door	93-96B	87.72	m 1.3	MB809 270
4 door	93-96B	83.15	m 1.3	MB809 272
nut	93-96	1.58		MS440 002
10 Cover	93-96	5.04		MB809 284
11 Bumper	93-96	11.17		MB809 285
12 Cup	93-96	5.17		MB809 281
13 Insulator	93-96	6.88		MB809 280
Bushing				
14 upper	93-96	1.92		MR130 231
15 lower	93-96	1.92		MR130 230
16 Upper support	93-96	16.95		MB910 847
nut	93-96	1.25		MB911 282
17 Collar	93-96	1.67		MB871 748
18 Washer	93-96	1.67		MB242 360
19 Top cap	93-96	1.58		MS440 002

PARTS: Order by description or color code.

¶ PARTS: Part included with trailing arm.

‡ PARTS: Part included with lower control arm.

REAR LAMPS



6212540

PARTS AND R&R OPERATIONS
COMBINATION LAMPS

Combo lamp assy			
1 2 door.....	93-96R	118.33	0.5= MB912 968
	93-96L	118.33	0.5= MB912 967
2 4 door.....	93-96R	124.85	0.5= MB912 966
	93-96L	124.85	0.5= MB912 965
Lens & housing			
3 2 door.....	93-96R	132.22	0.5= MB880 438
	93-96L	132.22	0.5= MB880 437
5 4 door.....	93-96R	123.60	0.5= MB859 308
	93-96L	123.60	0.5= MB859 307
gasket			
4 2 door.....	93-96	7.75	MB929 490
6 4 door.....	93-96	7.96	MB859 314
Bulb			
7 tail lamp.....	93-96B	1.43	0.2= AL001 156
stop & signal.....	93-96B	1.28	0.2= AL002 057

SIDE MARKER LAMPS

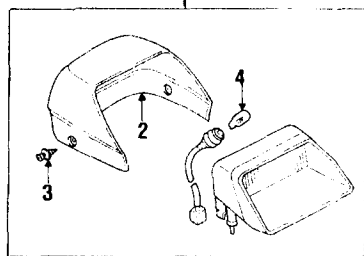
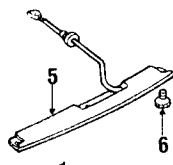
Side marker lamp.....	93-96B	9.82	0.3= MB821 201
Bulb.....	93-96	.77	AL000 194

LICENSE LAMPS

2 DOOR			
8 License lamp.....	93-96	22.18	0.3= MB530 248
9 Lens.....	93-96	2.13	MB596 500
10 gasket.....	93-96	.88	MB596 502
11 Bulb.....	93-96	.77	AL000 194

LICENSE LAMPS

4 DOOR			
12 License lamp.....	93-96	27.75	0.3= MB912 956
13 Lens.....	93-96	11.90	MB859 364
14 gasket.....	93-96	2.00	MB859 365
15 Bulb.....	93-96	.77	AL000 194



6212550

HIGH MOUNTED STOP LAMP
ON PACKAGE TRAY

1 High mount lamp			
2 door.....	93	49.73#	0.3= MB961 773
	94-96	54.82#	0.3= MB793 907
4 door.....	93-96	47.81#	0.3= MB967 723
2 Cover.....	93-96	7.33#	MB929 431
3 clip.....	93-96	1.00#	MB782 034
4 Bulb.....	93-96	2.52#	AL000 921

HIGH MOUNTED STOP LAMP
ON SPOILER

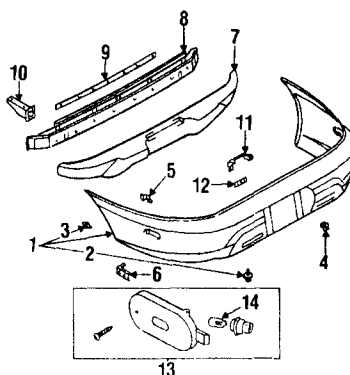
5 High mount lamp.....	93	59.87	0.3= MB622 662
------------------------	----	-------	----------------

Please contact our Product Support Group if you require assistance locating, interpreting or using any information contained in the Estimating Data. Toll Free Number: 1-800-426-6867.

6 screw.....	94-96	187.00	0.3= MB821 180
	93	.71	MF351 012
	94-96	.50	MF453 092

PARTS: Order by color.
PARTS: Order by color. Part included in stop lamp assembly.
PARTS: Part included in stop lamp assembly.

REAR BUMPER



6212590

OVERHAUL OPERATIONS

O/H bumper assy... 93-96 2.0

R&I OPERATIONS

R&I bumper assy... 93-96 1.0

PARTS AND R&R OPERATIONS

BUMPER & COMPONENTS

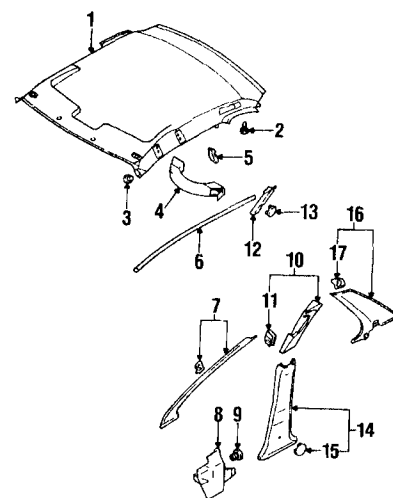
Cover			
2 door			
gray.....	(p2.5) 93-96	213.33#	2.0 MB912 894
gray & white.....	(p2.5) 93	213.33#	2.0 MB912 894
white.....	(p2.5) 93-96	213.33#	2.0 MB912 894
4 door			
gray.....	(p2.5) 93-96	213.33#	2.0 MB912 892
white.....	(p2.5) 93-96	213.33#	2.0 MB912 892
clip			
2 center.....	93-96	1.00#	MB271 999
3 side.....	93-96	1.38#	MB253 964
4 grommet.....	93-96	.83	MU480 007
mount bracket			
5 upper.....	93-96R	1.17	MB826 736
	93-96L	1.17	MB826 735
6 lower.....	93-96	15.05	MB826 381
7 grommet.....	93-96	1.54	MB481 588
Core			
2 door.....	93-96	77.38#	2.0 MB867 747
4 door.....	93-96	77.38#	2.0 MB867 745
Reinforcement			
2 door.....	93-96	155.54#	2.0 MB867 770
4 door.....	93-96	155.54#	2.0 MB867 750
9 Upper plate.....	93-96	13.85	MB867 790
10 Stay.....	93-96	31.88	MB867 781
bracket			
11 license lamp.....	93-96	2.08	MB867 726
12 license plate.....	93-96	2.08	MB867 728

LABOR: Time is for overhaul.
PARTS: Part included with cover.

INTERIOR TRIM

Part numbers and prices may vary because of types and colors. The information listed below is for estimating purposes only. For actual prices and ordering parts, consult your local dealer. On those panels where refinishing is necessary, estimate paint time accordingly.

PARTS AND R&R OPERATIONS



6212600

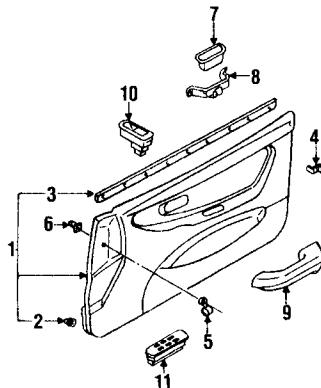
PILLAR & ROOF TRIM

Headliner			
2 door.....	93	217.63	1.1 MB971 051
	94	259.81	1.1 MR711 569
	95	264.60	1.1 MB946 857
4 door.....	93	226.23	1.1 MB967 768
	94	259.81	1.1 MR707 197
	95	269.94	1.1 MB898 966
clip			
2 type 1.....	93-95	.50	MB643 846
3 type 2.....	93-95	1.17	MB817 060
Grip			
4 roof assist.....	93-95	10.00	0.2= MB716 657
5 Coat hook.....	93-95	2.54	0.1= MB727 410
Rail trim			
6 seat belt			
2 door.....	93 R	22.13	0.3= MB938 143
	93 L	22.13	0.3= MB938 141
	94 R	22.13	0.3= MB938 143
2 door, right only.....	94	22.13	0.3= MB938 143
4 door.....	93 R	21.70	0.3= MB938 125
	93 L	21.70	0.3= MB938 123
4 door, right only.....	94	21.70	0.3= MB938 125
all.....	95		0.3 NOT LISTED
W'shield pillar			
2 door.....	93 R	19.28	0.3= MB938 117
	93 L	19.28	0.3= MB938 115
	94 R	19.28	0.3= MB938 117
	94 L	23.61	0.3= MB793 934
	95 R	23.54	0.3= MB793 935
	95 L	23.61	0.3= MB793 934
4 door.....	93 R	19.28	0.3= MB938 105
	93 L	19.28	0.3= MB938 103
	94 R	19.28	0.3= MB938 105
	94 L	23.61	0.3= MB793 932
	95 R	23.54	0.3= MB793 933
	95 L	23.61	0.3= MB793 932
8 Cowl panel.....	93-95R	8.28	0.3= MB794 014
	93-95L	8.28	0.3= MB794 012
9 clip.....	93-95	1.50	MB899 664
Center panel			
upper			
2 door.....	93 R	10.13	0.3= MB938 147
	93 L	10.13	0.3= MB938 145
	94 R	10.13	0.3= MB938 147
	94 L	12.37	0.3= MB960 410
	95 R	12.30	0.3= MB960 411
	95 L	12.37	0.3= MB960 410
4 door.....	93 R	10.13	0.3= MB938 109
	93 L	10.13	0.3= MB938 107
	94 R	10.13	0.3= MB938 109
	94 L	12.37	0.3= MB793 938
	95 R	12.30	0.3= MB793 939
	95 L	12.37	0.3= MB793 938
11 clip.....	93-95	.50	MU470 013
Corner trim			
belt rail			
2 door.....	93 R	6.04	MB938 121
	93 L	6.04	MB938 119
2 door, right only.....	94	6.04	MB938 121
4 door.....	93 R	6.04	MB938 113
	93 L	6.04	MB938 111
4 door, right only.....	94	6.04	MB938 113
all.....	95		NOT LISTED
13 Plug.....	93-94	1.38	MR115 472
	95		NOT LISTED

CONTINUED

INTERIOR TRIM (CONT)

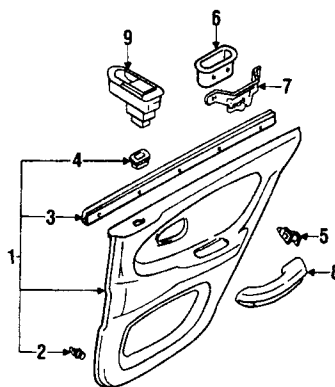
14 Pillar trim					
lower center					
4 door	93 R	12.44	0.3=	MB938 155	
	93 L	12.70	0.3=	MB938 152	
	94 R	12.44	0.3=	MB938 155	
	94 L	15.49	0.3=	MB796 992	
	95 R	15.45	0.3=	MB796 994	
	95 L	15.49	0.3=	MB796 992	
15 Plug	93	1.54		MB789 398	
16 Rear pillar					
2 door	93-95R	10.85	0.3=	MB971 053	
	93-95L	11.07	0.3=	MB971 052	
4 door	93-95R	12.27	0.3=	MR114 657	
	93-95L	12.27	0.3=	MR114 655	
17 clip	93-95	.50		MU470 013	



6212610

INTERIOR TRIM FRONT DOOR

1 Door trim panel					
2 door	93 R	241.78	0.5=	MB961 107	
	93 L	251.55	0.5=	MB961 105	
	94 R	259.73	0.5=	MR719 590	
	94 L	259.73	0.5=	MR719 586	
	95 R	255.29	0.5=	MR734 984	
	95 L	255.29	0.5=	MR734 982	
	96 R	255.29	0.5=	MR797 792	
	96 L	255.29	0.5=	MR734 981	
4 door					
S	93 R	130.24	0.5=	MB797 787	
	93 L	130.27	0.5=	MB797 785	
	94-95R	140.12	0.5=	MR719 561	
	94-95L	140.12	0.5=	MR719 560	
	96 R	148.15	0.5=	MB964 338	
	96 L	148.15	0.5=	MB964 337	
ES & LS	93 R	241.71	0.5=	MB976 704	
	93 L	236.97	0.5=	MB976 702	
	94-95R	143.27	0.5=	MR721 813	
	94-95L	143.27	0.5=	MR721 811	
	96 R	259.73	0.5=	MR719 554	
	96 L	259.73	0.5=	MR719 551	
Lock knob cover	93	1.71#		MB774 547	
	94-96	1.46#		MR721 978	
2 clip	93-96	.79#		MB851 006	
3 Belt w'strip					
inner					
2 door	93-96R	13.45#	0.3=	MB819 652	
	93-96L	13.72#	0.3=	MB819 651	
4 door	93-96R	13.45#	0.3=	MB819 650	
	93-96L	13.45#	0.3=	MB819 649	
4 Grommet					
2 door	93-96	1.17		MB817 099	
4 door	93-96	1.17		MB817 100	
Cap					
trim screw	93-96	.08		MF453 915	
6 Grommet					
	93-96	1.46		MB692 947	
Box					
pull handle	93-96	5.33		MB869 162	
9 Armrest					
	93-96R	9.42		MB772 407	
	93-96L	9.42		MB772 405	
8 bracket					
	93-96	2.92		MB817 180	
10 Window switch					
	93-96R	34.55	0.4=	MB793 911	
	93-96L	95.93	0.4=	MB967 724	
# PARTS: Part included with door trim panel.					

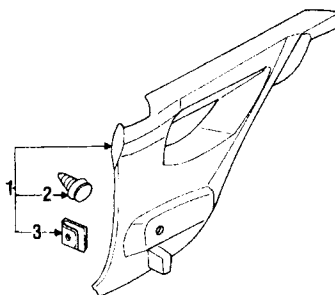


6212620

INTERIOR TRIM REAR DOOR

1 Rear door trim					
S	93 R	105.80	0.5=	MB797 795	
	93 L	105.80	0.5=	MB797 793	
	94-95R	154.67	0.5=	MB961 084	
	94-95L	151.64	0.5=	MB961 082	
	96 R	157.77	0.5=	MB797 812	
	96 L	157.77	0.5=	MB797 811	
ES & LS	93 R	151.62	0.5=	MB976 712	
	93 L	148.64	0.5=	MB976 710	
	94 R	149.10	0.5=	MR713 369	
	94 L	149.10	0.5=	MR713 364	
	95 R	177.71	0.5=	MR713 378	
	95 L	177.71	0.5=	MR713 372	
	96 R	149.10	0.5=	MR713 367	
	96 L	149.10	0.5=	MR713 362	
2 clip	93-96	.79#		MB851 006	
3 Belt w'strip					
	93-96R	11.60#	0.3=	MB819 654	
	93-96L	11.83#	0.3=	MB819 653	
4 Lock knob cover					
	93	1.71#		MB774 547	
	94-96	1.46#		MR721 978	
5 Grommet					
	93-96	1.17		MB817 100	
6 pull handle					
	93-96	5.33		MB869 162	
8 Armrest					
	93 R	9.42		MB772 407	
	93 L	9.42		MB772 405	
	94-96			NOT LISTED	
7 bracket					
	93-96	2.92		MB817 180	
9 Window switch					
	93-96B	34.55	0.4=	MB793 911	

PARTS: Part included with door trim panel.

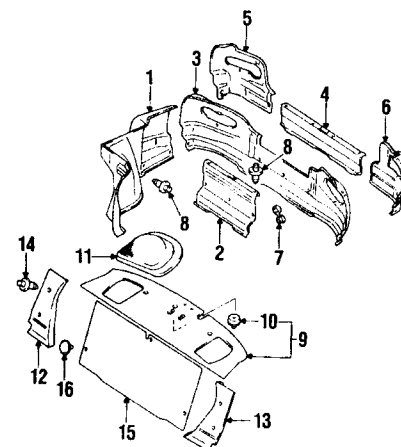


6212630

INTERIOR TRIM QUARTER PANEL

1 Qtr trim panel					
	93 R	91.88	0.6	MB938 001	
	93 L	92.78	0.6	MB938 000	
	94 R	91.88	0.6	MB938 001	
	94 L	42.84	0.6	MB948 359	
	95-96R	39.85	0.6	MB971 055	
	95-96L	42.84	0.6	MB948 359	
3 clip					
	93-96	.50#		MU470 013	
2 Plug					
	93	1.25#		MU670 035	

PARTS: Part included with quarter trim panel.



6212640

INTERIOR TRIM LUGGAGE COMPARTMENT

1 Side trim					
	93-96R	44.25	0.3=	MB793 969	
	93-96L	44.70	0.3=	MB793 968	
Tail panel					
2 door					
upper	93-96	22.02	0.3=	MB793 967	
lower	93-96	31.82	0.3=	MB794 053	
4 door					
center	93-96	21.83	0.3=	MB793 966	
side	93-96R	21.83	0.3=	MB793 971	
	93-96L	21.83	0.3=	MB793 970	
8 clip					
	93-96	1.13		MB779 749	
7 Cap					
	93-96	.50		MB568 890	
9 Package tray					
2 door					
w/o speaker	93-96	78.62	0.3=	MB967 776	
w/speaker	93-94	80.18	0.3=	MB938 515	
	95-96	80.18	0.3=	MB971 035	
4 door	93-96	77.09	0.3=	MB967 775	
10 clip					
	93-96	.71		MB128 398	
11 Speaker grille					
	93-96R	37.52	0.3=	MB797 046	
	93-96L	36.78	0.3=	MB797 045	
Seat trim					
back brace					
w/split rear seat	93-96R	10.73		MB793 993	
	93-96L	10.73		MB793 992	
14 clip					
	93-96	1.13		MB779 749	
Partition panel					
w/o split rear seat	93-96	18.57		MR115 309	
16 clip					
	93-96	.83		MB375 995	