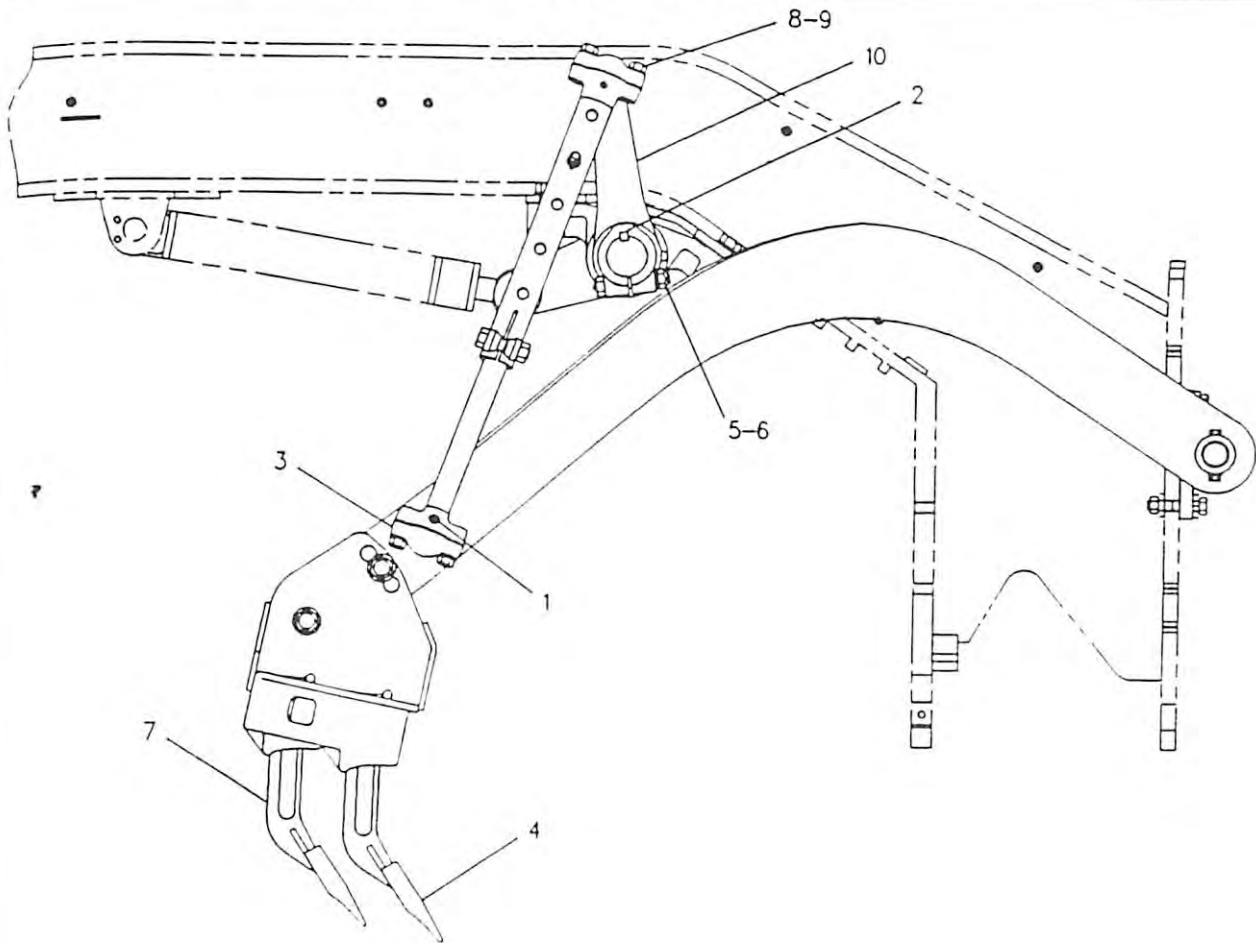


# IMPLEMENTS



NOTE	REF NO	PART NUMBER	QTY	PART NAME	NOTE	REF NO	PART NUMBER	QTY	PART NAME
B	1	3B8489	4	FITTING-GREASE					
	2	4D6086	2	KEY					
	3	6F6992	4	CAP-BALL SOCKET					
	4	7F1327	32	SHIM ( .30" THK )					
	5	6Y5230	11	TOOTH-SCARIFIER					
	6	6K0545	4	LOCKNUT					
	7	7X0390	4	BOLT					
	8	8C6913	4	WASHER-HARD					
	9	5B6251	17	SHANK-TOOTH					
	10	1A8063	8	BOLT					
		5P8248	8	WASHER-HARD					
		8D1268	2	ARM AS-LIFT					
		7D8245	1	(EACH INCLUDES) STUD-BALL					

B-USE AS REQUIRED

F-578414 EP

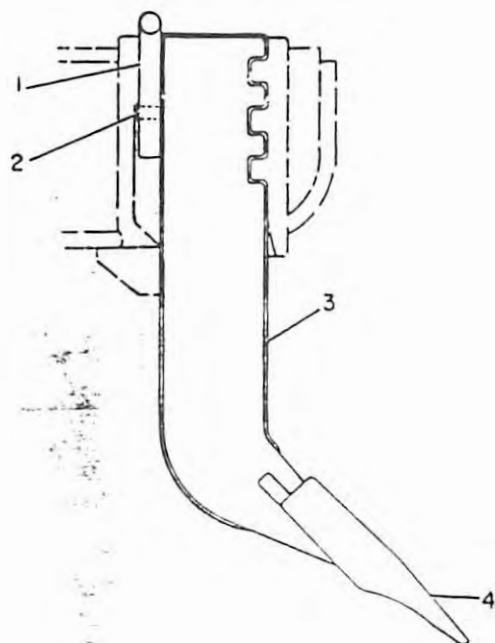
8162

1113883 SCARIFIER GP-PART 2 OF 2

Straight

Part Of 1130704 Scarifier An  
An Attachment

# IMPLEMENTS



NOTE	REF NO	PART NUMBER	QTY	PART NAME
	1	5K1459	9	LOCKPIN
	2	5K1458	9	GROMMET
	3	9F5124	9	SHANK-TOOTH
	4	6Y5230	9	TOOTH-SCARIFIER
F		6B3260	1	TOOL

F-NOT SHOWN

B-498

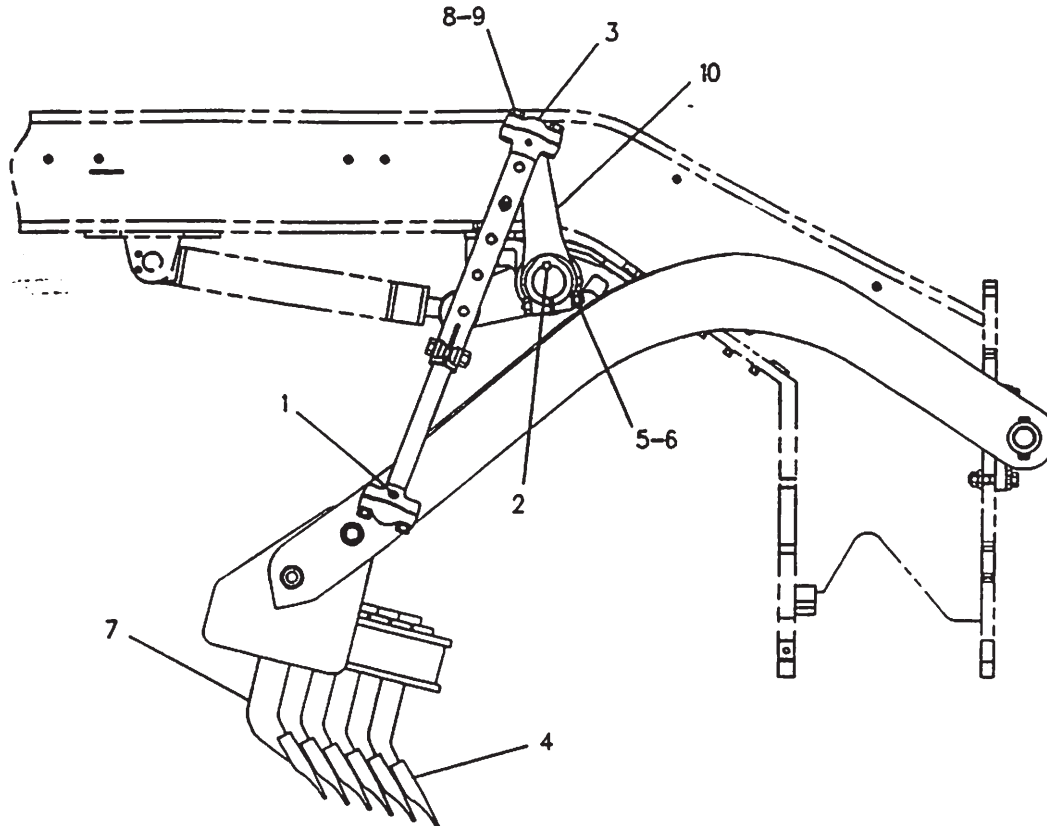
6811

4K3330 TOOTH GP-SCARIFIER

9 Teeth

Part Of 1341213 Merchandise Ar  
An Attachment

# IMPLEMENTS



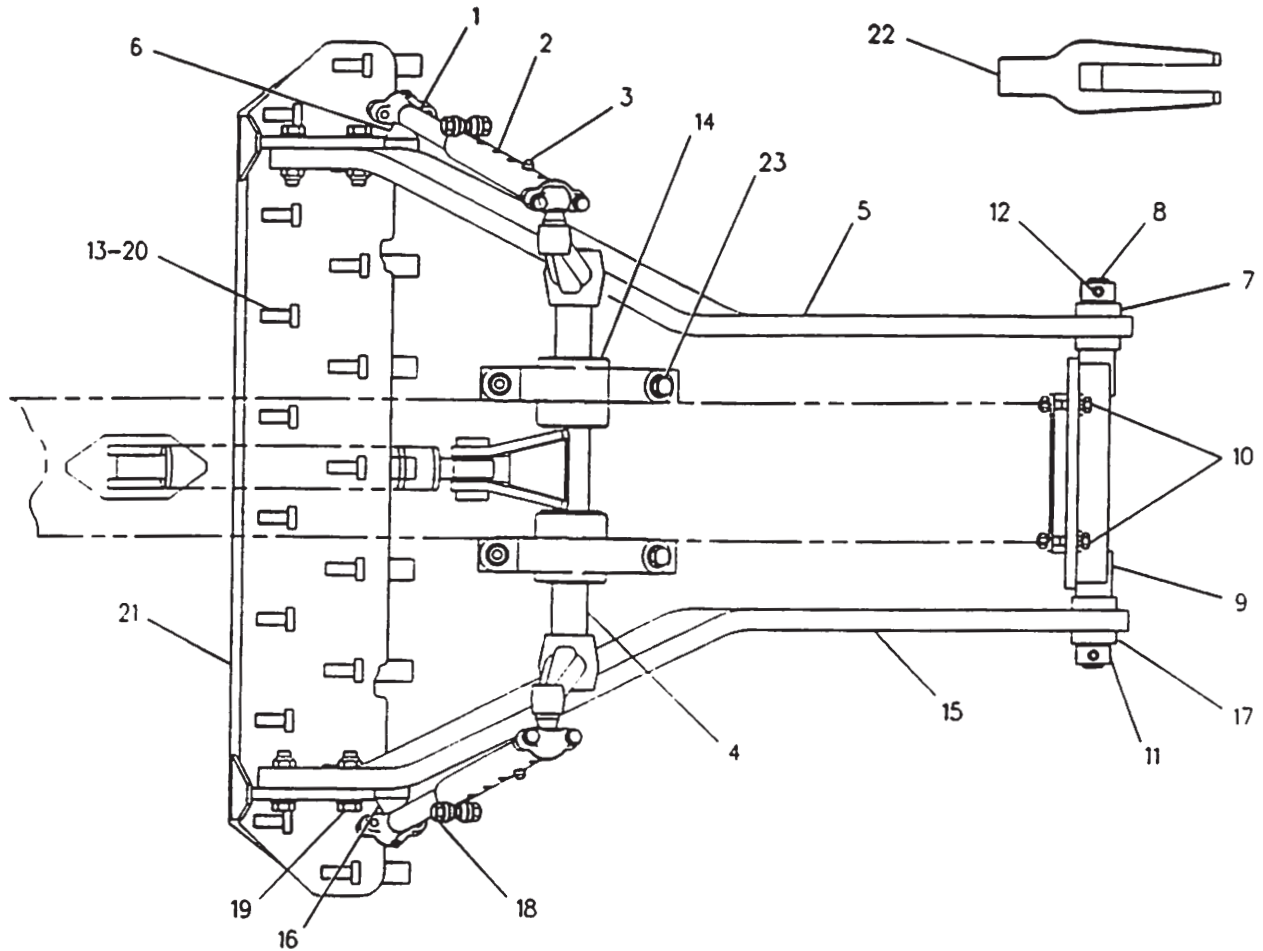
RIGHT SIDE VIEW

NOTE	REF NO	PART NUMBER	QTY	PART NAME	NOTE	REF NO	PART NUMBER	QTY	PART NAME
B	1	3B8489	4	FITTING-GREASE					
	2	406086	2	KEY					
	3	6F6992	4	CAP-BALL SOCKET					
		7F1327	32	SHIM (.30" THK)					
	4	6Y5230	11	TOOTH-SCARIFIER					
	5	6K0545	4	LOCKNUT					
	6	7X0390	4	BOLT					
		8C6913	4	WASHER-HARD					
	7	9F5124	11	SHANK-TOOTH					
	8	1A8063	8	BOLT					
	9	5P8248	8	WASHER-HARD					
	10	8D1268	2	ARM AS-LIFT					
		7D8245	1	(EACH INCLUDES) STUD-BALL					

B-USE AS REQUIRED

F-578424 EP

# IMPLEMENTS



NOTE	REF NO	PART NUMBER	QTY	PART NAME	NOTE	REF NO	PART NUMBER	QTY	PART NAME
	1	9D5516	2	LINK AS-LIFT (EACH INCLUDES)		15	1187881	1	DRAWBAR AS
		7D2135	1	SOCKET-BALL		16	8W5597	1	STUD-BALL
	2	7D2196	2	SLEEVE AS-LINK (EACH INCLUDES)		17	2G7728	2	COLLAR
		7D2136	1	SOCKET-BALL		18	1A0224	2	BOLT
	3	5D8161	2	PIN			1B4208	2	NUT-FULL
		5D8159	2	PIN AS		19	8H4040	4	BOLT
	4	1078375	1	SHAFT AS			3D4904	4	LOCKNUT
	5	1187880	1	DRAWBAR AS		20	3S1349	4	WASHER
	6	8W5597	1	STUD-BALL		21	5K1459	11	LOCKPIN
	7	2G7728	2	COLLAR		22	2G7149	1	BLOCK AS
	8	2G7309	1	SHAFT-GOVERNOR CONTROL		23	6B3260	1	TOOL
	9	8X6075	1	BOLSTER AS			2H3746	4	BOLT
	10	1D4612	4	BOLT			2K7471	4	LOCKNUT
		2J3506	4	NUT-FULL			5P8250	8	WASHER
		8X3663	8	WASHER					
	11	5B0577	2	COLLAR					
	12	9X8875	2	BOLT					
		1F7958	2	NUT-FULL					
		5P8245	2	WASHER					
	13	5K1458	11	GROMMET					
	14	8W0663	2	BRACKET AS (EACH INCLUDES)					
		3B8489	1	FITTING-GREASE					
		1078374	2	BEARING					

F-601605 CP

## IMPLEMENTS

	PAGE
1 1160379 BRACKET GP-SCARIFIER.....	352
1 8W2913 CYLINDER & MTG GP-SCARIFIER.....	261
1 8X6070 LINES GP-HYDRAULIC.....	282
1 8X6080 SCARIFIER GP.....	364

578937 P

6162

1081104 SCARIFIER AR  
An Attachment

	PAGE
1 1160379 BRACKET GP-SCARIFIER.....	352
1 8W2913 CYLINDER & MTG GP-SCARIFIER.....	261
1 8X6070 LINES GP-HYDRAULIC.....	282
1 1113883 SCARIFIER GP.....	366

578399 P

6162

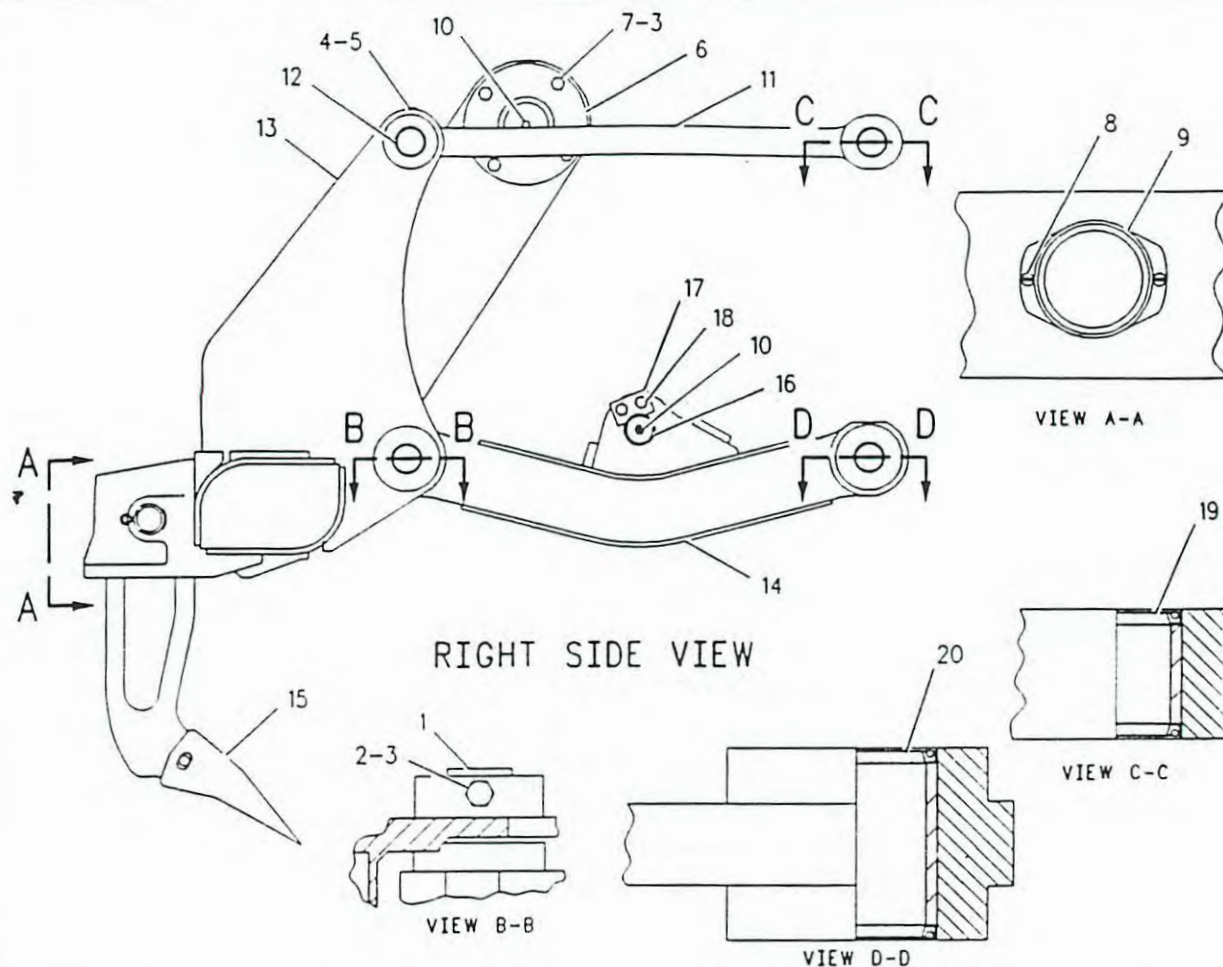
1130704 SCARIFIER AR  
Straight  
An Attachment

[illegible]

NOTE	REF NO	PART NUMBER	QTY	PART NAME	NOTE	REF NO	PART NUMBER	QTY	PART NAME
	1	9D5516	2	LINK AS-LIFT		15	1187881	1	DRAWBAR AS
				(EACH INCLUDES)		16	8W5597	1	STUD-BALL
		7D2135	1	SOCKET-BALL		17	2G7728	2	COLLAR
	2	7D2196	2	SLEEVE AS-LINK		18	1A0224	2	BOLT
				(EACH INCLUDES)			1B4208	2	NUT-FULL
		7D2136	1	SOCKET-BALL		19	8H4040	4	BOLT
	3	5D8161	2	PIN			3D4904	4	LOCKNUT
		5D8159	2	PIN AS			3S1349	4	WASHER
	4	1078375	1	SHAFT AS		20	5K1459	1	LOCKPIN
	5	1187880	1	DRAWBAR AS		21	2G4332	1	BLOCK AS-SCARIFIER
	6	8W5597	1	STUD-BALL		22	6B3260	1	TOOL
	7	2G7728	2	COLLAR		23	2H3746	4	BOLT
	8	2G7309	1	SHAFT-GOVERNOR CONTROL			2K7471	4	LOCKNUT
	9	8X6075	1	BOLSTER AS			5P8250	2	WASHER
	10	1D4612	4	BOLT					
		2J3506	4	NUT-FULL					
		8X3663	8	WASHER					
	11	5B0577	2	COLLAR					
	12	9X8875	2	BOLT					
		1F7958	2	NUT-FULL					
		5P8245	2	WASHER					
	13	5K1458	1	GROMMET					
	14	8W0663	2	BRACKET AS					
				(EACH INCLUDES)					
		388489	1	FITTING-GREASE					
		1078374	2	BEARING					



# IMPLEMENTS

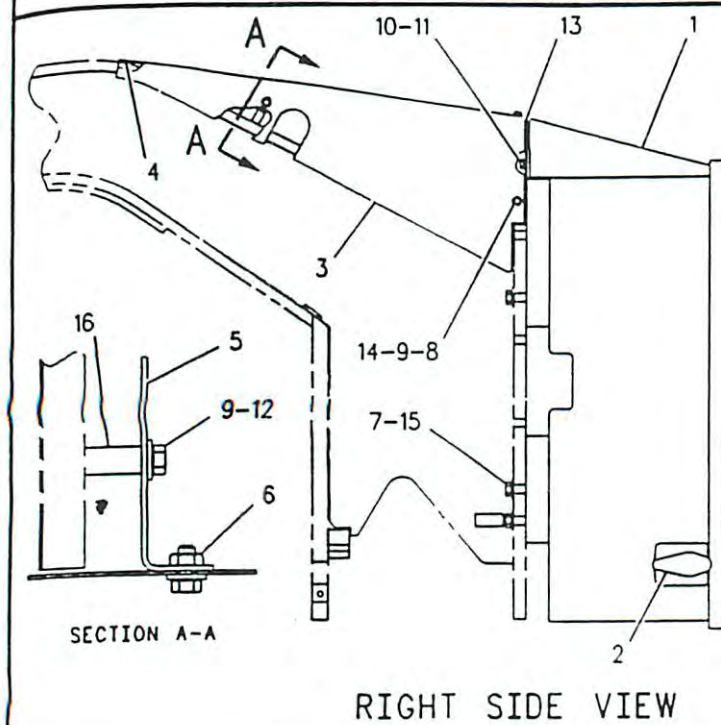


NOTE	REF NO	PART NUMBER	QTY	PART NAME	NOTE	REF NO	PART NUMBER	QTY	PART NAME
	1	4K3150		PIN					
	2	7X0333		BOLT					
	3	1K6872		LOCKNUT					
	4	8T9378		BOLT					
	5	2K4973		LOCKNUT					
	6	4K3004		BEARING-TRUNNION SUPPLEMENTARY					
	7	5P2424		BOLT					
	8	1L6931		SCREW AS-MACHINE					
	9	7L6363		MARKER-REFLEX					
	10	3B8489		FITTING-GREASE					
	11	9J0096		LINK AS-UPPER					
		3G2581		BEARING					
	12	8J7008		PIN					
	13	9W3155		CARRIAGE AS					
	14	3G2579		BEARING					
		1437501		LINK AS-LOWER					
		2K4233		BOSS					
Y	15	8J1434		TOOTH GP-SCARIFIER					
	16	2K0120		PIN					
	17	2K0703		BAR					
	18	5P2228		BOLT					
	19	2D0626		SEAL					
	20	7K9203		SEAL-LIP					

Y-SEPARATE ILLUSTRATION

F-711641 CP

# IMPLEMENTS



NOTE	REF NO	PART NUMBER	QTY	PART NAME
BD	1	8X2366	1	PLATE AS-PUSH
	2	5J7333	2	HOOK
	3	1125853	1	PLATE
	4	5P5923	1	SEAL (.4M)
	5	1125855	1	BRACKET AS
	6	9F2978	2	NUT-WELD
	7	5P6652	8	WASHER
	8	5M3062	6	BOLT (3/8-16X.750IN)
	9	5P1075	8	WASHER-HARD (3MM THK)
	10	8T8917	2	BOLT (1/2-13X1.25IN)
	11	8T4223	2	WASHER-HARD
	12	5S7379	2	BOLT (3/8-16X.875IN)
	13	1125852	1	PLATE AS
	14	9F2978	4	NUT-WELD
	15	8C6857	8	BOLT (3/4-10X2.75IN)
	16	9D6164	2	BOSS

B-USE AS REQUIRED  
D-ORDER BY THE METER

F-598172 CP

6077

8X2349 PLATE GP-PUSH

Part Of 1341212, 1341213, 1496439 Merchandise Ars  
An Attachment

PAGE

1	1137754 CYLINDER GP-RIPPER LIFT.....	270
1	1097027 LINES GP-RIPPER.....	293
1	9W7467 MOUNTING GP-RIPPER.....	360
1	8T4009 PLATE & FILM GP.....	490
1	8J7024 RIPPER GP.....	362
	-OR-	
1	1452244 RIPPER GP.....	362.01
1	2P8540 LITERATURE GP	

711926 P

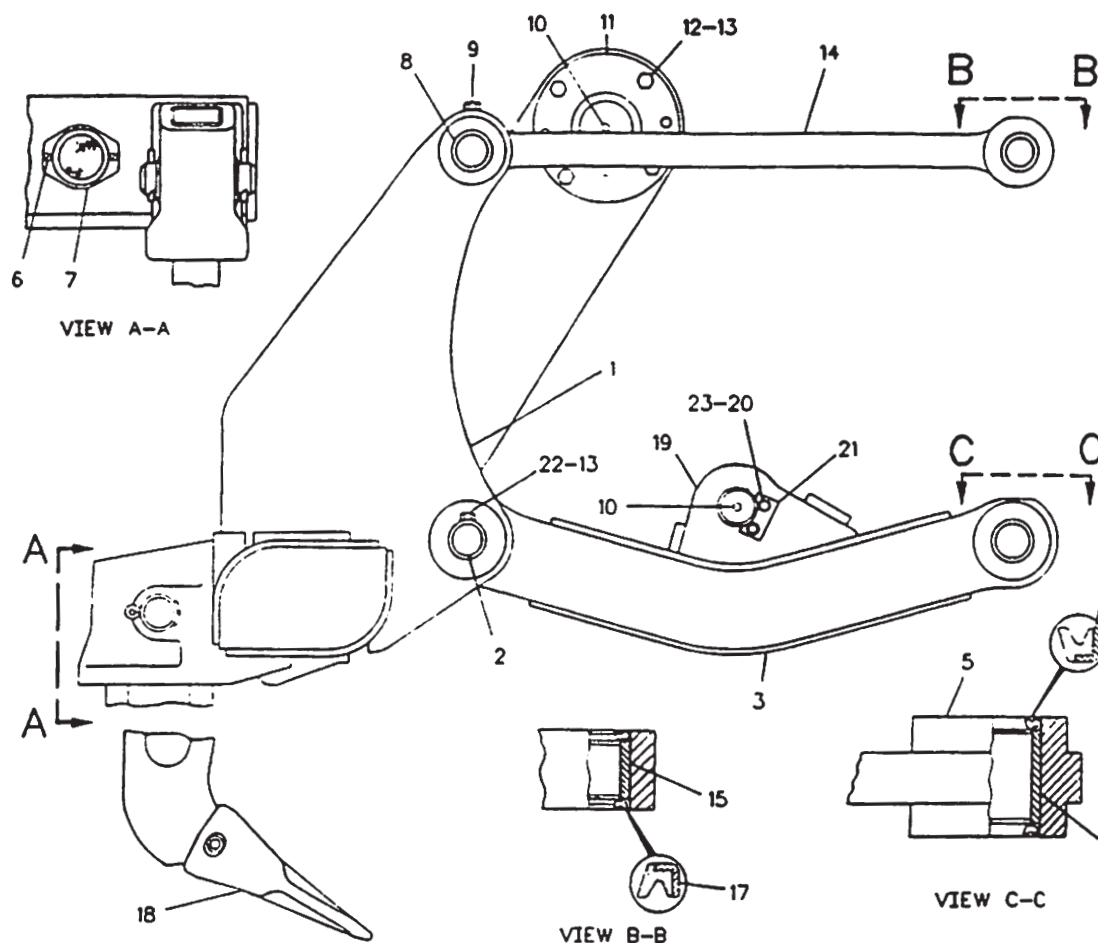
6312

9W7603 RIPPER AR

Part Of 1341212, 1341213, 1496439 Merchandise Ars  
An Attachment



# IMPLEMENTS



NOTE	REF NO	PART NUMBER	QTY	PART NAME	NOTE	REF NO	PART NUMBER	QTY	PART NAME
	1	8J7023	1	CARRIAGE AS					
	2	4K3150	2	PIN					
	3	9J0095	1	LINK AS-LOWER					
	4	3G2579	4	BEARING					
	5	2K4233	8	BOSS					
	6	1L6931	4	SCREW AS-MACHINE					
	7	7L6363	2	MARKER-REFLEX					
	8	4K3151	2	PIN					
	9	8T9378	2	BOLT					
		2K4973	2	LOCKNUT					
	10	3B8489	3	FITTING-GREASE					
	11	4K3004	2	BEARING-TRUNNION					
				SUPPLEMENTARY					
	12	5P2424	8	BOLT					
	13	1K6872	10	LOCKNUT					
	14	9J0096	2	LINK AS-UPPER					
				(EACH INCLUDES)					
	15	3G2581	2	BEARING					
	16	7K9203	8	SEAL-LIP					
	17	2D0626	8	SEAL					
Y	18	8J1434	3	TOOTH GP-SCARIFIER					
	19	2K0120	1	PIN					
	20	5P2566	2	BOLT					
	21	2K0703	1	BAR					
	22	7X0333	2	BOLT					
	23	3H7654	4	WASHER					

Y-SEPARATE ILLUSTRATION

R-5

6325

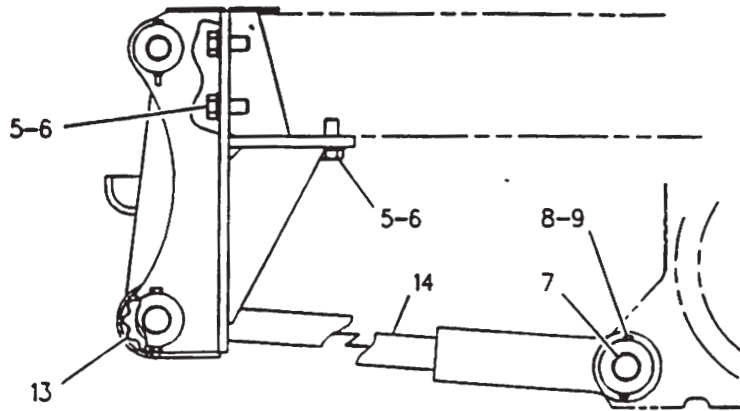
8J7024 RIPPER GP  
8J1434-Page 369  
Part Of 9W7603 Ripper Ar

# IMPLEMENTS

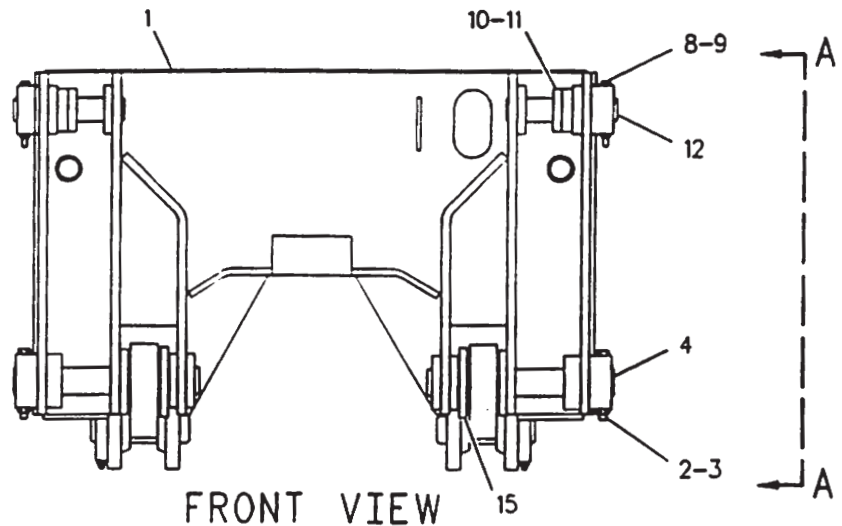
NOTE	REF NO	PART NUMBER	QTY	PART NAME	NOTE	REF NO	PART NUMBER	QTY	PART NAME
	1	8T4223	4	WASHER-HARD					
	2	8T8919	4	BOLT					
	3	7D8891	2	RETAINER					
	4	8X3616	1	ARM AS-RH					
	5	7D8889	1	BEARING					
	6	8D8168	1	BEARING					
	7	2J3506	6	NUT-FULL					
		3B6753	6	BOLT					
	8	5P8248	16	WASHER-HARD					
	9	8X5106	1	BALLSTUD					
	10	8D4332	2	PIN					
	11	8X5110	2	YOKE AS					
		2G8233	1	RING					
	12	2M0849	1	WASHER					
		9S1366	1	BOLT					
	13	8X5109	1	BAR AS					
	14	8X5108	2	BEARING-SLEEVE					
	15	9D1377	5	BUSHING-TERMINAL					
	16	OS1756	4	BOLT					
	17	9D3583	2	LOCK					
	18	7H2444	2	SEAL (75.6MM ID)					
	19	7D8878	4	WASHER-THRUST					
	20	7D8877	2	WASHER-THRUST					
B	21	7D8879	8	SHIM					
B	22	7D8881	6	SHIM					
B	23	7D8882	2	SHIM					
	24	7D8875	4	WASHER-THRUST					
	25	5F0149	2	SEAL-O-RING					
	26	7D8883	2	SEAL					
	27	8X5107	1	PIN					
	28	3P1461	4	SEAL-LIP					
	29	7D8876	2	WASHER-THRUST					
	30	8X5111	2	LOCK					
	31	7D8884	2	SEAL					
	32	8X3615	1	ARM AS-LH					
		8D8168	1	BEARING (63.65MM ID)					
		7D8889	1	BEARING (76.35MM ID)					
	33	1240435	1	PLATE					
B	34	8D4336	2	WASHER-THRUST (.075 THK)					
B	35	1238187	2	WASHER-THRUST (.100 THK)					

B-USE AS REQUIRED

# IMPLEMENTS



VIEW A-A



FRONT VIEW

NOTE	REF NO	PART NUMBER	QTY	PART NAME	NOTE	REF NO	PART NUMBER	QTY	PART NAME
	1	9W7438	1	PLATE AS					
		9F2978	1	NUT-WELD					
		1044522	2	PLATE					
	2	7X0333	2	BOLT					
	3	1K6872	2	LOCKNUT					
	4	9W7470	2	PIN					
	5	7X0403	10	BOLT					
	6	8T5361	10	WASHER					
	7	1096776	2	PIN					
	8	7X0292	4	BOLT					
	9	2K4973	4	LOCKNUT					
	10	3W7256	2	SPACER (16MM THK)					
	11	3W7254	2	SPACER (20MM THK)					
	12	9W7469	2	PIN					
	13	1044523	2	CAM AS					
	14	8E6130	2	LINK AS					
		2K4233	2	BOSS					
	15	6P5647	2	BOSS					

F-5

6324

9W7467 MOUNTING GP-RIPPER  
Part Of 9W7603 Ripper Ar  
An Attachment

# IMPLEMENTS

NOTE	REF NO	PART NUMBER	QTY	PART NAME
C C C	1	3F5108	8	BOLT-PLOW
	2	4K0367	18	NUT
	3	8X2235	1	PLATE AS
	4	8W2214	1	EXTENSION
	5	4F3658	10	BOLT-PLOW
	6	9W1835	1	EDGE-CUTTING
	7	9B1565	2	SPACER
	8	6D7563	1	ANGLE AS
C-CHANGE FROM PREVIOUS TYPE				
				F-605647 CP

6173

**8W3330 EXTENSION GP-BLADE**  
(RH). 610 MM (2 FT)  
An Attachment

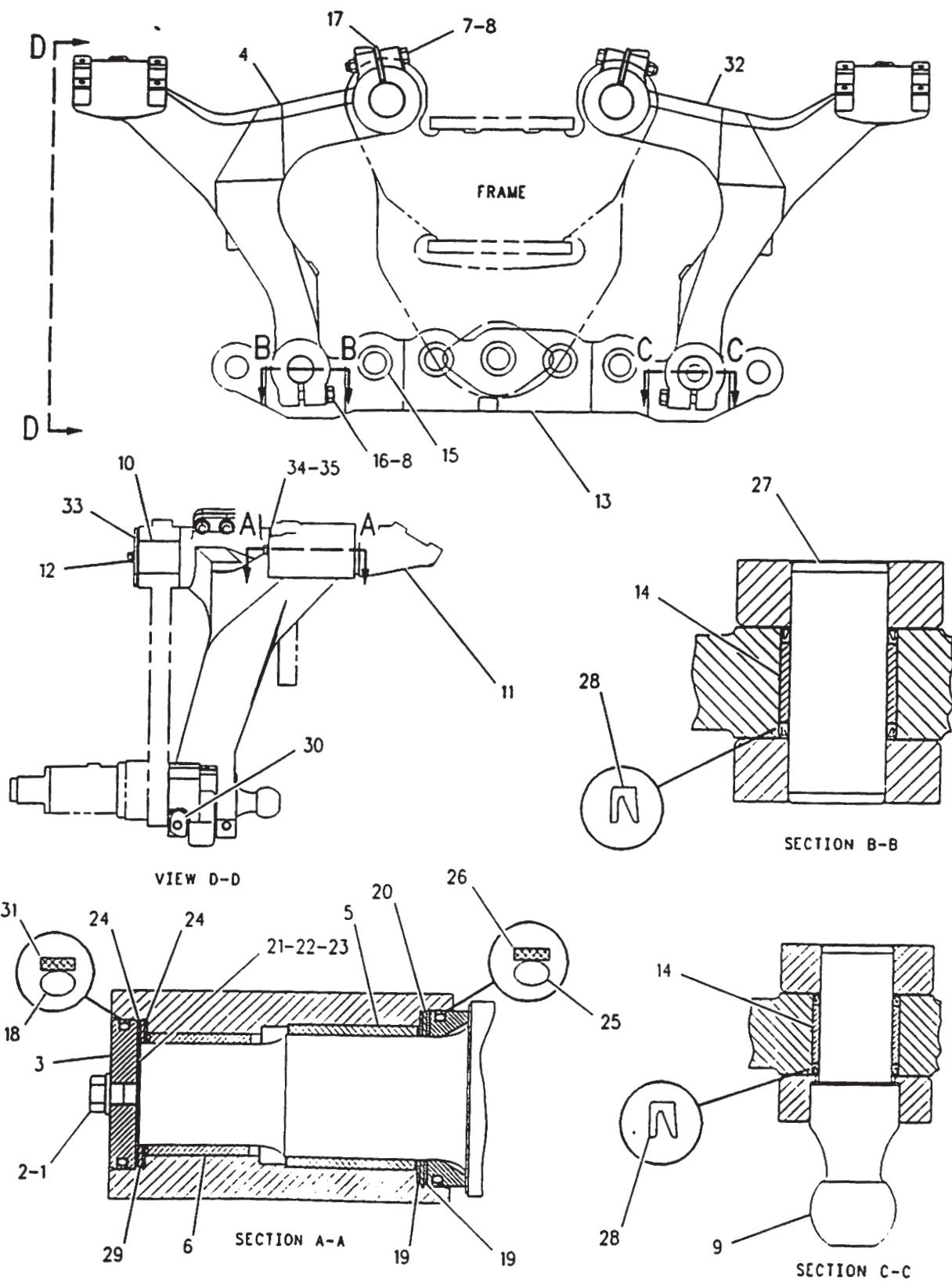
NOTE	REF NO	PART NUMBER	QTY	PART NAME
C C C	1	8W2213	1	EXTENSION
	2	3F5108	8	BOLT-PLOW
	3	4K0367	18	NUT
	4	8X2238	1	PLATE AS
	5	4F3658	10	BOLT-PLOW
	6	6D7564	1	ANGLE AS
	7	9W1835	1	EDGE-CUTTING
	8	9B1565	2	SPACER
C-CHANGE FROM PREVIOUS TYPE				
				F-605640 CP

6173

**8W3332 EXTENSION GP-BLADE**  
(LH). 610 MM (2 FT)  
An Attachment



# IMPLEMENTS



## IMPLEMENTS

2 509558 EDGE-CUTTING

578943 P

6801

1073392 EDGE GP-CUTTING  
An Attachment

2 509559 EDGE-CUTTING

578944 P

6801

1073393 EDGE GP-CUTTING  
An Attachment

## IMPLEMENTS

2 5D9562 EDGE-CUTTING

578945 P

6801

1073425 EDGE GP-CUTTING  
An Attachment

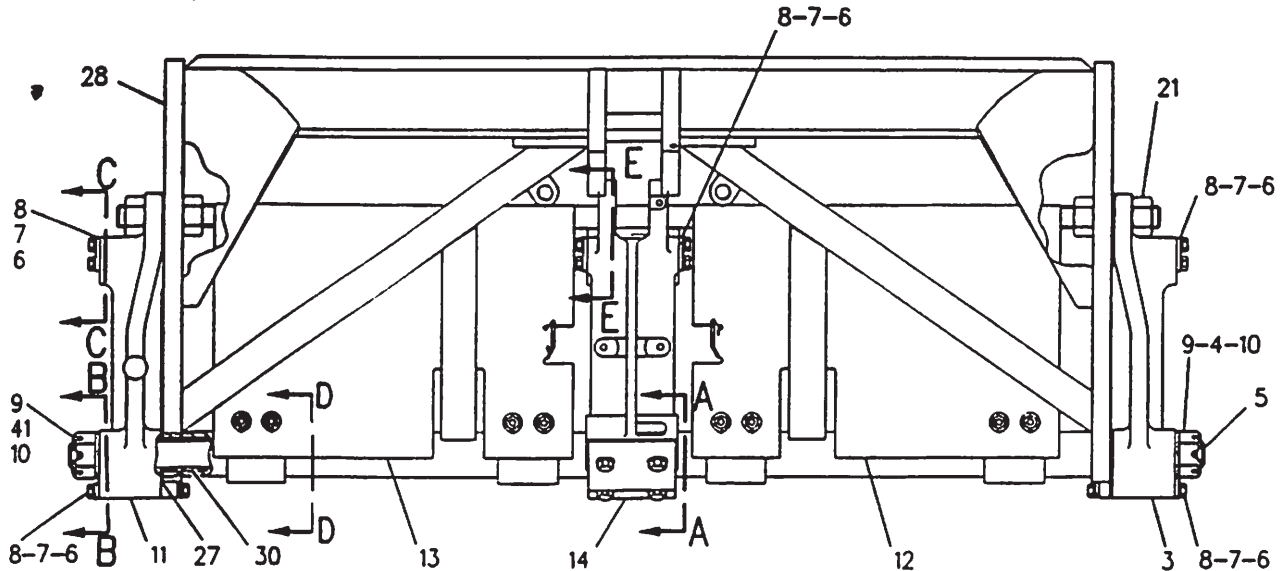
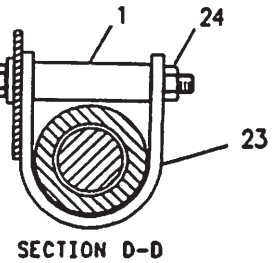
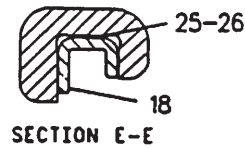
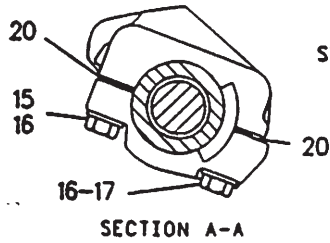
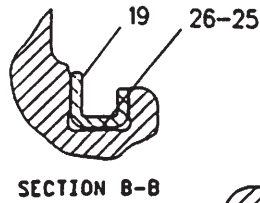
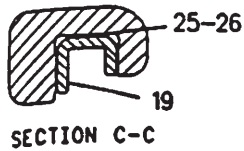
2 5D9561 EDGE-CUTTING

578942 P

6801

1073426 EDGE GP-CUTTING  
An Attachment

# IMPLEMENTS



NOTE	REF NO	PART NUMBER	QTY	PART NAME	NOTE	REF NO	PART NUMBER	QTY	PART NAME
	1	1024139	8	SPACER		23	1052080	4	BRACKET AS (EACH INCLUDES)
	2	7X0550	8	WASHER-HARD		24	1F0748	2	NUT-WELD (1/2-13 THD)
	3	1125060	1	BRACKET AS	B	25	2G3219	5	SHIM (.80MM THK)
		1048655	1	BEARING-SLEEVE	B	26	2G3221	5	SHIM (1.6MM THK)
	4	2B2673	2	NUT		27	2K0419	4	WASHER
	5	6G2947	1	SHAFT-GOVERNOR CONTROL		28	1127485	1	CIRCLE AS
	6	5P8245	30	WASHER	Y	29	8D5949	1	BAR-SPREADER
	7	6H1717	30	BOLT (1/2-13X1.125IN)		30	2A7089	2	BEARING-SLEEVE
	8	8W1749	10	PLATE					
	9	1D0503	2	WASHER					
	10	3B5320	2	COTTER					
	11	1125061	1	BRACKET AS					
		1048655	1	BEARING-SLEEVE					
	12	8W5229	1	GUARD					
	13	8W5231	1	GUARD					
	14	8W1751	1	BRACKET AS					
	15	8S9092	2	BOLT (5/8-11X2.25IN)					
	16	5P8247	4	WASHER-HARD					
	17	1A8537	2	BOLT (5/8-11X2.75IN)					
	18	5T8367	1	STRIP-WEAR					
	19	5T8366	4	STRIP-WEAR					
	20	5D6644	10	SHIM (.762MM THK)					
	21	7X0452	4	NUT-FULL (1-1/2-6 THD)					
	22	7X0334	8	BOLT (1/2-13X5IN)					

B-USE AS REQUIRED  
Y-SEPARATE ILLUSTRATION

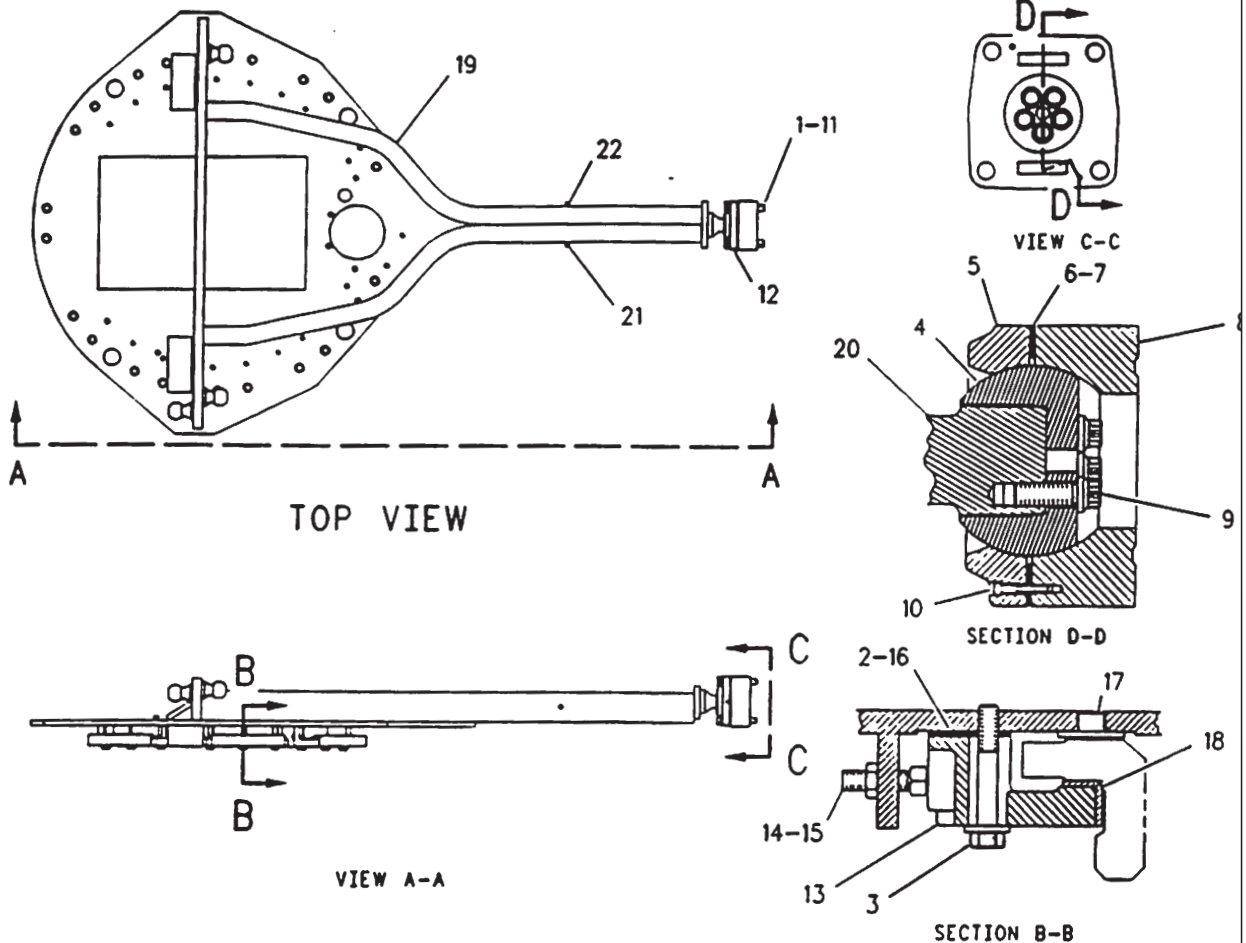
F-631761 CP

6154

1127486 CIRCLE GP  
1127485-Page 352  
Part Of 8W6219 Blade Ar



# IMPLEMENTS

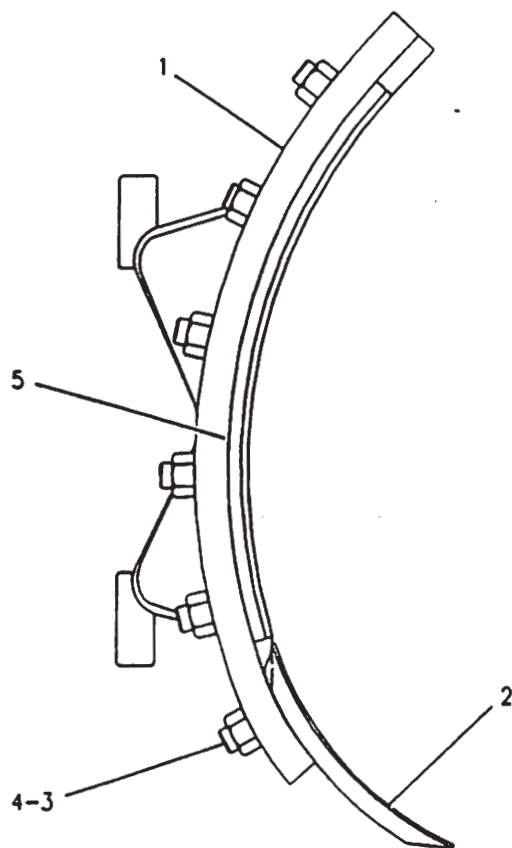


NOTE	REF NO	PART NUMBER	QTY	PART NAME	NOTE	REF NO	PART NUMBER	QTY	PART NAME
B	1	9S1322	4	BOLT					
	2	6G1915	36	SHIM					
	3	5P6652	18	WASHER					
B	4	3B6753	18	BOLT					
	5	6G5442	1	BALL					
	6	8X8406	1	CAP-DRAWBAR PIVOT					
B	7	8X8409	4	SHIM					
	8	8X8408	6	SHIM					
	9	8X8407	1	ADAPTER					
	10	5P8291	5	BOLT					
	11	2H3764	2	BOLT					
	12	9H1031	4	WASHER-HARD					
	13	3B8489	1	FITTING-GREASE					
	14	6G4526	6	SHOE-CIRCLE GUIDE					
	15	4B3604	12	SETSCREW-SQUARE HEAD					
	16	1D5119	12	NUT					
	17	6G1914	54	SHIM					
	18	6G4524	11	STRIP-WEAR					
	19	6G4525	6	STRIP-WEAR					
	20	8X7951	1	DRAWBAR & YOKE AS					
	21	8X7956	1	SHAFT AS					
	22	3T6090	5	BOSS					
		4V7412	1	BOSS					

B-USE AS REQUIRED

F-609696

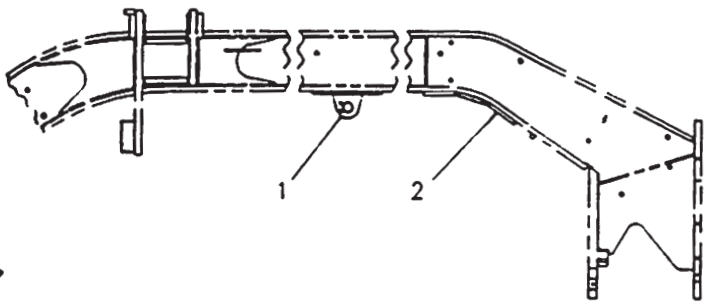
IMPLEMENTS



NOTE	REF NO	PART NUMBER	QTY	PART NAME	NOTE	REF NO	PART NUMBER	QTY	PART NAME
	1	8W2761	1	MOLDBOARD AS					
		1121814	2	RAIL-MOLDBOARD					
	2	5D9554	2	EDGE-CUTTING					
	3	3F5108	40	BOLT-PLOW					
	4	4K0367	40	NUT					
	5	8E5531	2	BIT-END					

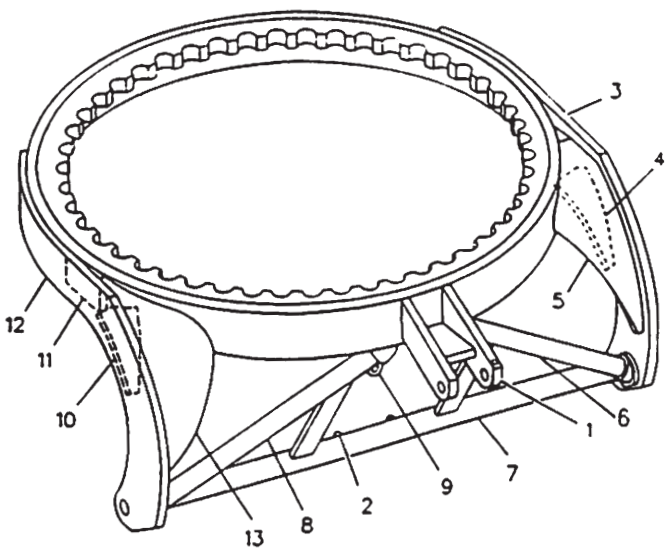
F-602072 CP

# IMPLEMENTS

	NOTE	REF NO	PART NUMBER	QTY	PART NAME
		1	8W0684	1	BRACKET AS
		2	8W0681	1	PLATE
F-578402					

3001

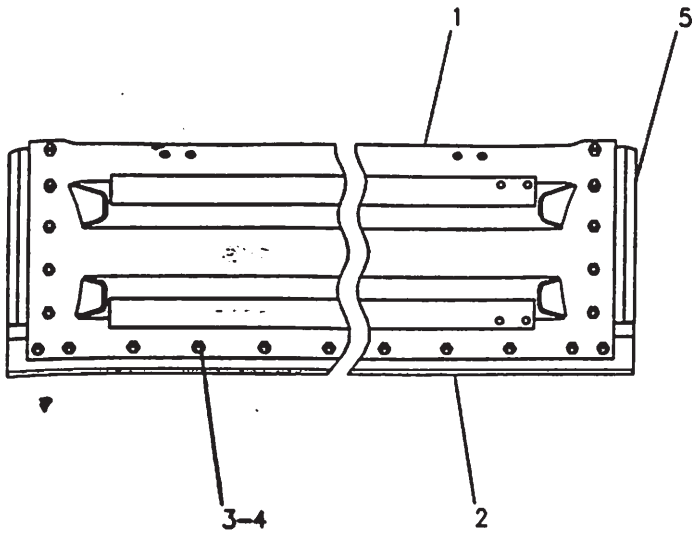
1160379 BRACKET GP-SCARIFIER  
Part Of 1081104, 1130704 Scarifier Ars  
An Attachment

	NOTE	REF NO	PART NUMBER	QTY	PART NAME
		1	2G3971	1	BRACKET AS
		2	6G2946	2	STOP
		3	1278880	1	BEAM-BLADE
		4	809883	1	GUSSET
		5	809886	1	BRACE
		6	5T3889	1	BRACE
		7	1278878	1	BRACE
		8	5T3890	1	BRACE
		9	404375	2	LUG
		10	809884	1	GUSSET
		11	809882	2	BLOCK-FILLER
		12	1278891	1	BEAM-BLADE
		13	809887	1	BRACE
R-625172					

5201

1127485 CIRCLE AS  
Part Of 1127486 Circle

# IMPLEMENTS



NOTE	REF NO	PART NUMBER	QTY	PART NAME
	1	8W2768	1	MOLOBOARD AS
	1	121813	1	RAIL-MOLOBOARD
	2	5D9553	2	EDGE-CUTTING
	3	3F5108	36	BOLT-PLOW
	4	4K0367	36	NUT
	5	8E5531	2	BIT-END

F-576545 EP

6060

8X8011 BLADE GP  
12 FT  
Part Of 8W6219 Blade Ar



# IMPLEMENTS

2 9W1767 BIT-END

10 4F3657 BOLT-PLOW

402679 P

6804

7D6671 BIT GP-END  
An Attachment

2 9W1768 BIT-END

6 4F3657 BOLT-PLOW

4 4F3658 BOLT-PLOW

578946 P

6804

1073395 BIT GP-END  
An Attachment