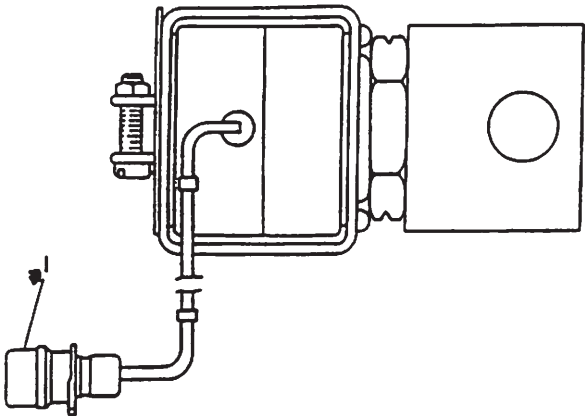


**BRAKING SYSTEM**



NOTE	REF NO	PART NUMBER	QTY	PART NAME
	1	7N9737	1	HOUSING-PLUG
		7N7779	1	SOCKET
		7N7780	1	PIN-CONNECTOR

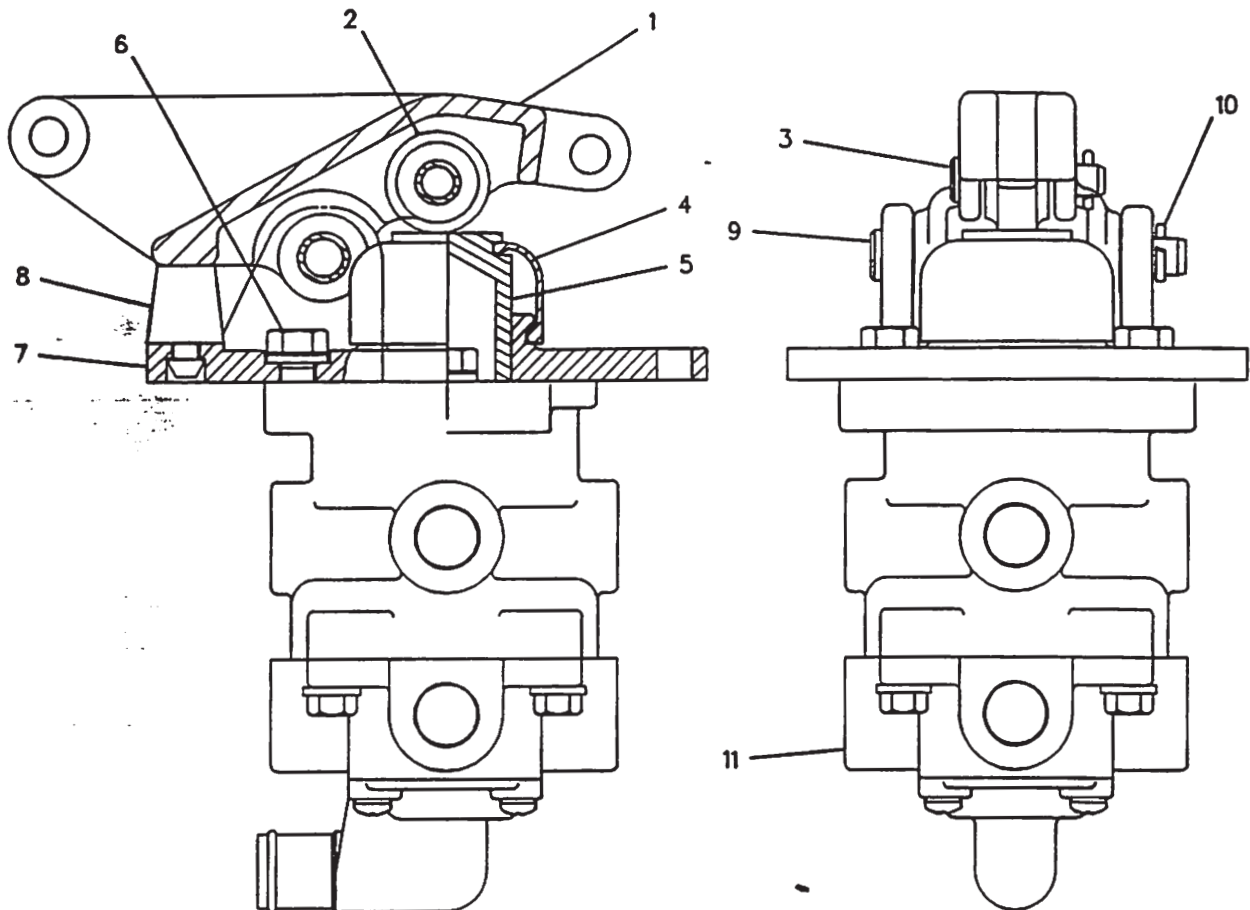
B-402070 EP

5479

**7T9074 VALVE GP-SOLENOID**  
24 Volt

Part Of 8W5934 Control-Parking Brake, 8X9440 Horn-Air

# BRAKING SYSTEM



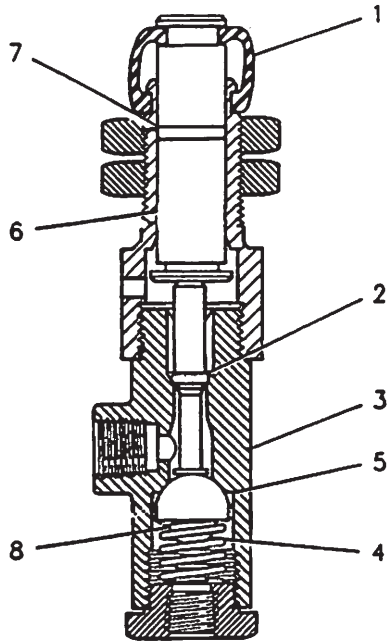
NOTE	REF NO	PART NUMBER	QTY	PART NAME	NOTE	REF NO	PART NUMBER	QTY	PART NAME
	1	8X2646	1	LEVER AS					
	2	9D8121	1	ROLLER					
	3	3B4607	1	COTTER					
	4	7B9323	1	PIN					
	5	5D3636	1	BOOT					
	6	2R0719	1	PLUNGER					
	7	1255321	3	BOLT					
	8	2R0694	1	PLATE-BRAKE VALVE					
	9	2R0724	1	BUTTON-STOP					
	10	2D6006	1	PIN					
	11	3B4610	1	PIN-COTTER					
J		8W5651	1	VALVE GP-CONTROL					
		5D0768	1	SPRING					
				THE FOLLOWING REPAIR KIT IS AVAILABLE:					
J		2G6285	1	KIT-AIR CONTROL VALVE (INCLUDES SPRINGS, INLET & EXHAUST VALVES, O-RINGS, BOOT, SCREW, LOCKNUT & FILTER)					

F-604073 CP

5506

**8X2650 VALVE GP-AIR CONTROL**  
Part Of 8W7490 Control-Service Brake

# BRAKING SYSTEM



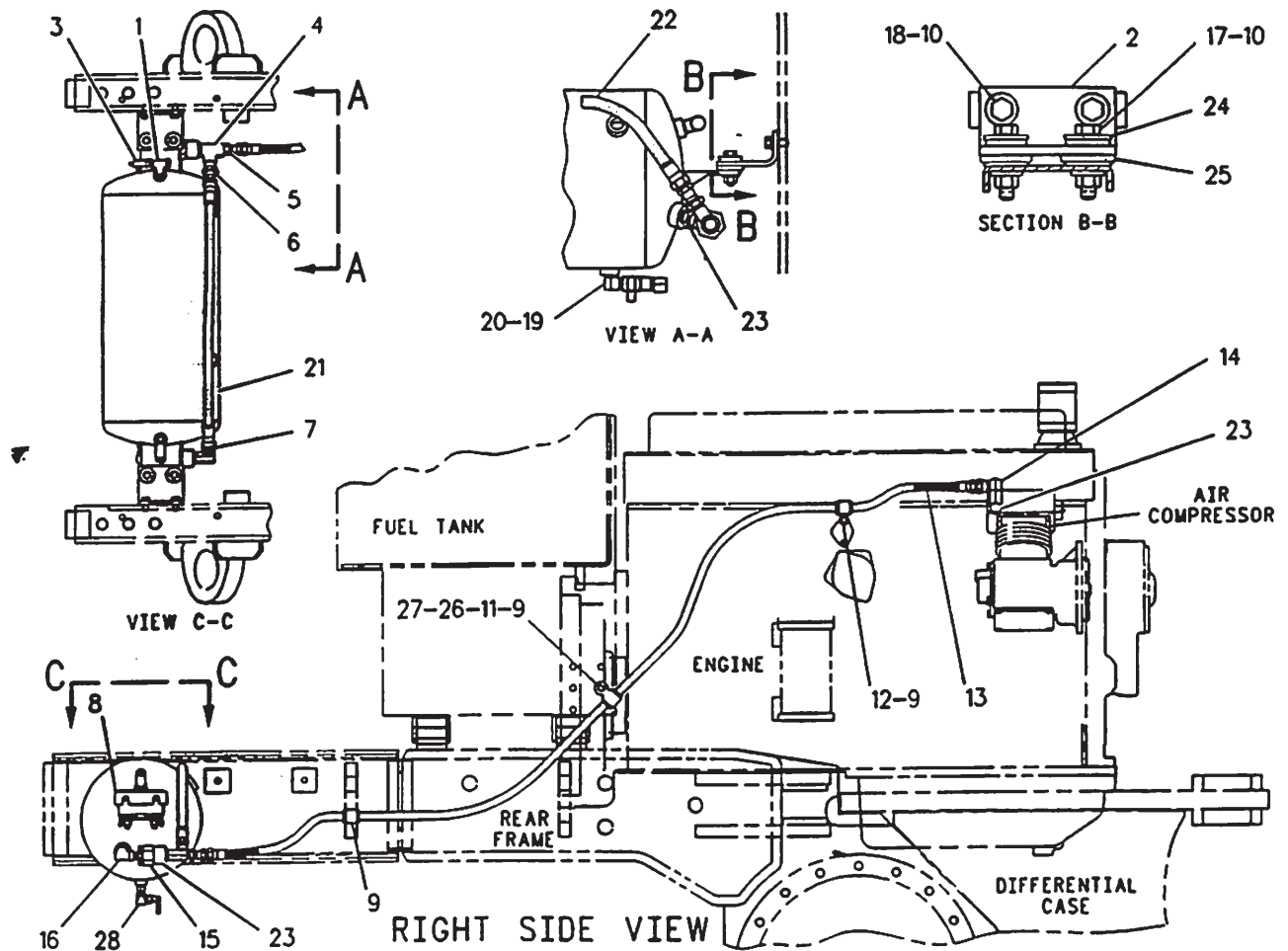
NOTE	REF NO	PART NUMBER	QTY	PART NAME
	1	5D7778	1	BOOT
	2	6H9691	1	SEAL-O-RING
	3	4J8524	1	BODY
	4	4J3957	1	SPRING
	5	4D1138	1	VALVE-INLET
	6	4J8527	1	STEM
	7	1H1023	1	SEAL-O-RING
	8	4D1135	1	SEAT-SPRING

R-604609 CP

4282

5D4382 VALVE AS-AIR CONTROL  
Part Of 8W5934 Control-Parking Brake

# BRAKING SYSTEM



NOTE	REF NO	PART NUMBER	QTY	PART NAME	NOTE	REF NO	PART NUMBER	QTY	PART NAME
I	1	45933	1	TEE-PIPE		26	8T9383	1	BOLT
	2	8W8496	2	PLATE		27	8T4223	1	WASHER-HARD
	3	2G1034	2	VALVE		28	5P8998	2	NIPPLE
	4	6A3591	1	TEE-PIPE					
	5	2H9091	1	CONNECTOR-PIPE					
	6	6D6489	1	CONNECTOR-PIPE					
	7	3D8913	1	ELBOW					
	8	8W7915	2	SHIM					
	9	8W8528	3	SLEEVE					
	10	8T4896	8	WASHER-HARD (2.5MM THK)					
	11	8X7740	1	CLIP (3/8-16X.750IN)					
	12	9G9154	1	CLIP (10.5MM ID)					
	13	1408786	1	HOSE AS					
	14	2H3940	1	ELBOW					
	15	1302940	2	VALVE AS-CHECK					
	16	26453	2	ELBOW-PIPE					
	17	5S7383	4	BOLT (3/8-16X1.75IN)					
		6V8801	4	NUT (3/8-16 THD)					
	18	5S7379	4	BOLT (3/8-16X.875IN)					
	19	9D6663	2	VALVE					
I	20	7F9311	4	FITTING					
	21	8W8575	1	RESERVOIR					
	22	9D2549	1	HOSE AS					
	23	7D4903	4	ADAPTER					
	24	7X0578	8	WASHER-HARD (2.5MM THK)					
	25	1P7115	4	GROMMET AS					

I-SEE HOSE FABRICATION GUIDE

F-712091 CP

# BRAKING SYSTEM

NOTE	REF NO	PART NUMBER	QTY	PART NAME	NOTE	REF NO	PART NUMBER	QTY	PART NAME
	1	7J8611	1	ELBOW					
	2	2D7325	1	TEE					
	3	3B7721	1	BUSHING-REDUCER					
	4	4J3914	1	ELBOW					
	5	1H7724	3	BUSHING-REDUCER					
	6	8L6005	3	TEE-PIPE					
	7	4J8922	2	ROD END					
	8	1B2578	1	NUT (3/8-16 THD)					
	9	6V8801	2	NUT (3/8-16 THD)					
	10	8T4896	9	WASHER-HARD (2.5MM THK)					
	11	8X2499	1	PEDAL-BRAKE					
	12	8X2497	1	LEVER					
	13	3S2713	2	NUT-FULL (3/8-24 THD)					
	14	1F4622	2	BEARING-NEEDLE					
	15	7V0446	2	CLIP					
	16	1B0676	1	PIN					
	17	9J8783	1	SHIM (.508MM THK)					
	18	1293173	1	BOLT-12 POINT HEAD (3/8-16THD)					
	19	5J3658	1	ROD					
	20	4M6425	3	BOLT (5/16-18X1IN)					
	21	6V8189	3	NUT (1/4-20 THD)					
	22	8T4224	3	WASHER-HARD (2MM THK)					
	23	7M7410	2	PLUG					
	24	5M3062	1	BOLT (3/8-16X.750IN)					
I	25	8X7600	1	HOSE AS					
E	26	2L3331	2	CONNECTOR-PIPE					
	27	5P0721	1	HOSE (168CM)					
I	28	4D0582	1	ELBOW (EXTERNAL PIPE)					
I	29	4D6885	1	HOSE AS					
	30	6D9598	1	HOSE AS					
	31	4D0577	1	ELBOW-EXTERNAL PIPE THREAD					
	32	1286944	1	PLATE AS					
	33	3T0050	2	CLIP (21.5 MM WIDE)					
	34	9G8140	1	SPACER					
	35	8X8921	1	CLAMP					
	36	8X8271	1	CLAMP					
	37	8X7601	1	CLAMP					
	38	2D6386	2	COUPLING					
	39	8W8537	2	CLAMP					
	40	1103326	1	PLATE AS					
	41	9B7237	2	BOLT (3/8-16X1.25IN)					
	42	8W8527	2	SLEEVE					
	43	6V4245	1	ELBOW-PIPE					
	44	3K6060	4	LOCKNUT (3/8-16 THD)					

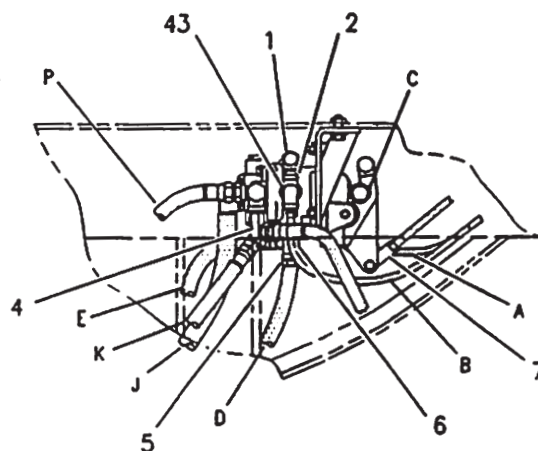
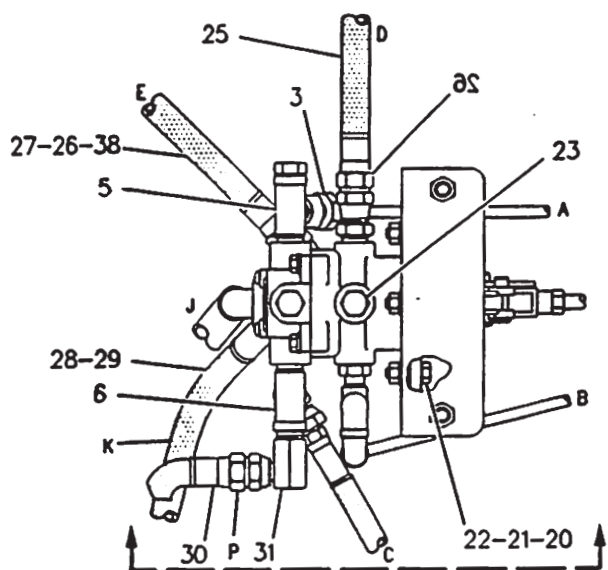
E-ORDER BY THE CENTIMETER  
I-SEE HOSE FABRICATION GUIDE

711746 CP

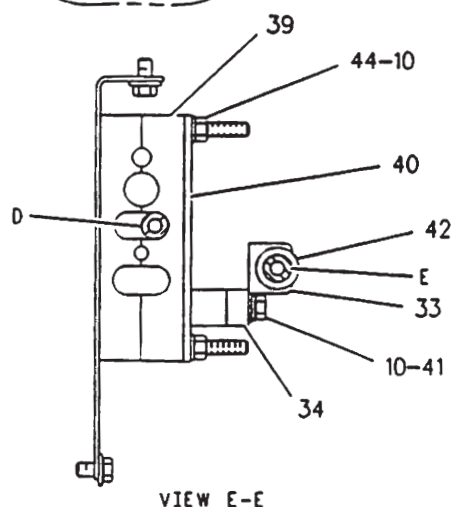
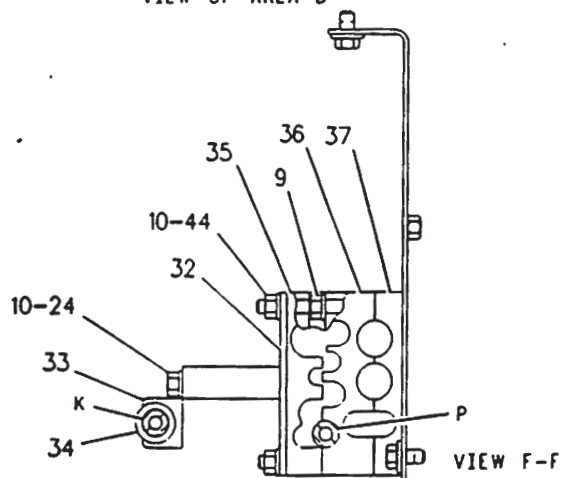
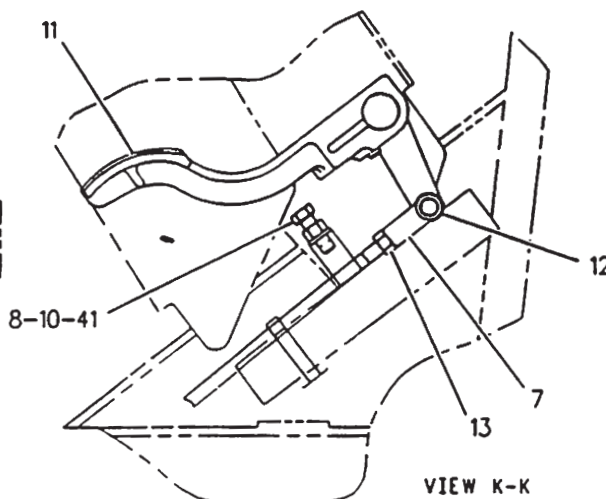
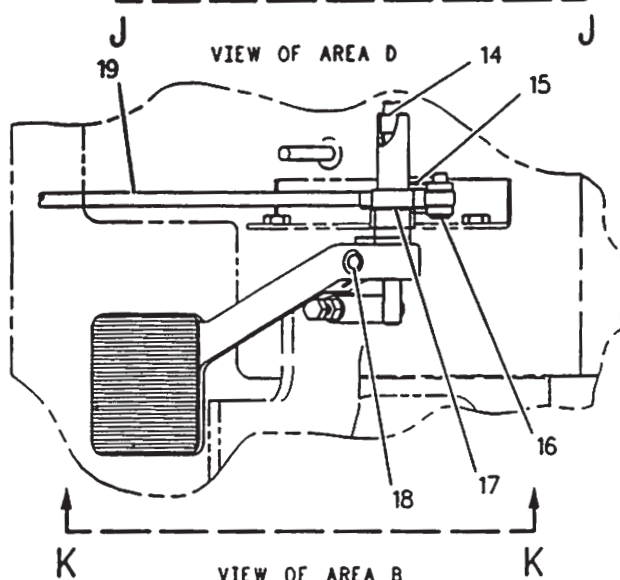
4111

8W7490 CONTROL GP-SERVICE BRAKE-PART 3 OF 3  
Part Of 1124112 Chassis Ar

# BRAKING SYSTEM



VIEW J-J



F-711745 CP

# BRAKING SYSTEM

NOTE	REF NO	PART NUMBER	QTY	PART NAME	NOTE	REF NO	PART NUMBER	QTY	PART NAME
I	1	5H4778	1	ELBOW					
	2	6D9855	1	HOSE AS					
	3	8W9004	2	TUBE AS					
	4	4D0582	2	ELBOW (EXTERNAL PIPE)					
	5	2M1908	2	FITTING-BULKHEAD					
	6	9S1302	2	WASHER					
	7	9X8606	8	CLIP					
I	8	7D7419	2	HOSE AS					
	9	4D0577	2	ELBOW-EXTERNAL PIPE					
				THREAD					
	10	5K9238	4	CONNECTOR-FLARED					
	11	6G1415	2	JUNCTION BLOCK					
	12	8T9056	4	BOLT (3/8-16X1-1/4IN)					
	13	8T4896	4	WASHER-HARD (2.5MM THK)					
	14	7M7410	2	PLUG					
	15	8W8527	7	SLEEVE					
	16	3D8913	2	ELBOW (EXTERNAL PIPE)					
	17	4H6147	1	CONNECTOR-PIPE					
	18	8D7026	4	GUARD-BRAKE TUBE					
	19	8W9005	1	TUBE AS					
	20	2L3331	2	CONNECTOR-PIPE					
	21	8W9005	1	TUBE AS					
	22	8W8528	4	SLEEVE					
	23	6K6826	4	ELBOW					

I-SEE HOSE FABRICATION GUIDE

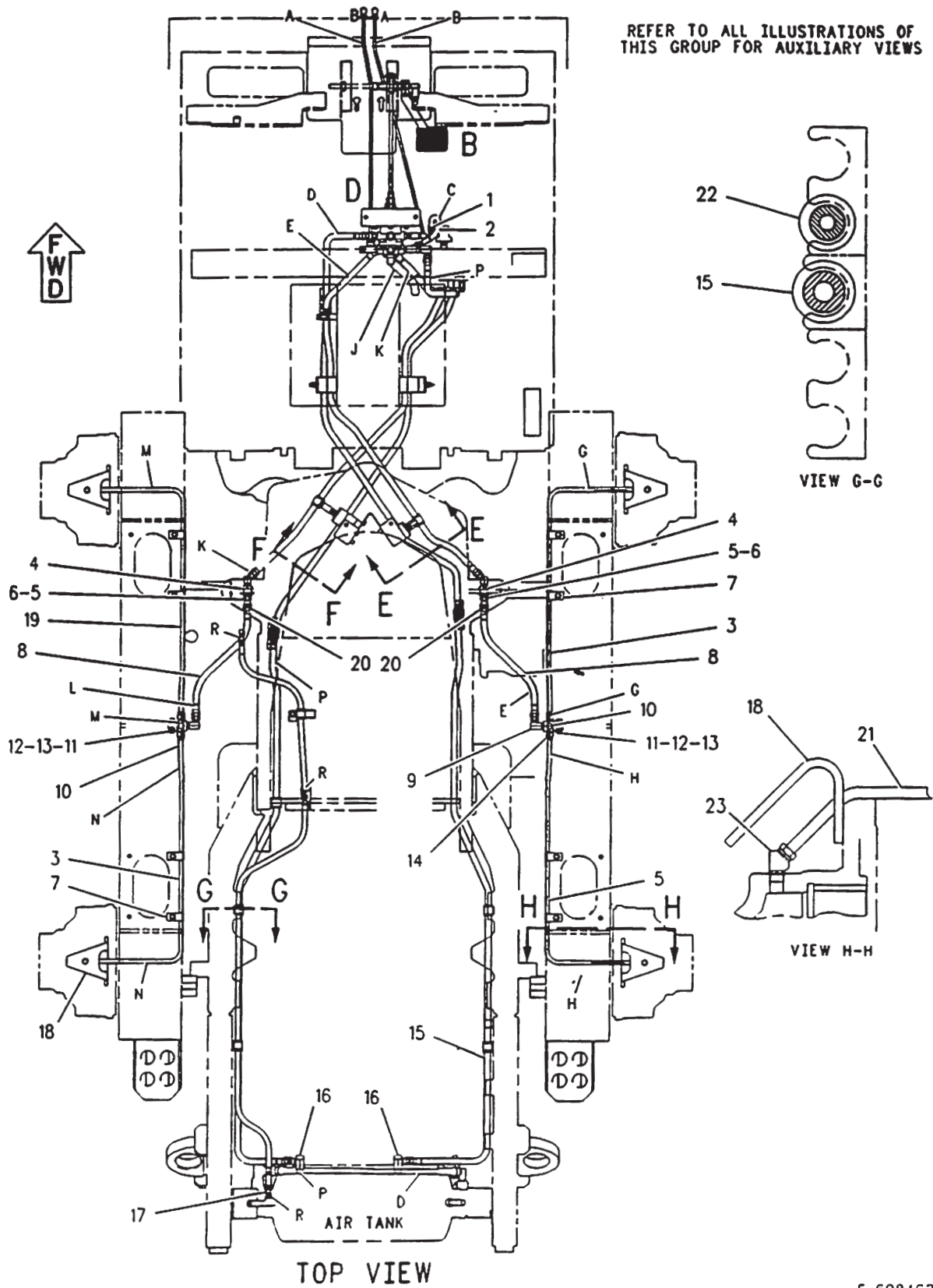
698164 CP

4111

8W7490 CONTROL GP-SERVICE BRAKE-PART 2 OF 3  
Part Of 1124112 Chassis Ar

# BRAKING SYSTEM

REFER TO ALL ILLUSTRATIONS OF THIS GROUP FOR AUXILIARY VIEWS



TOP VIEW

F-698163

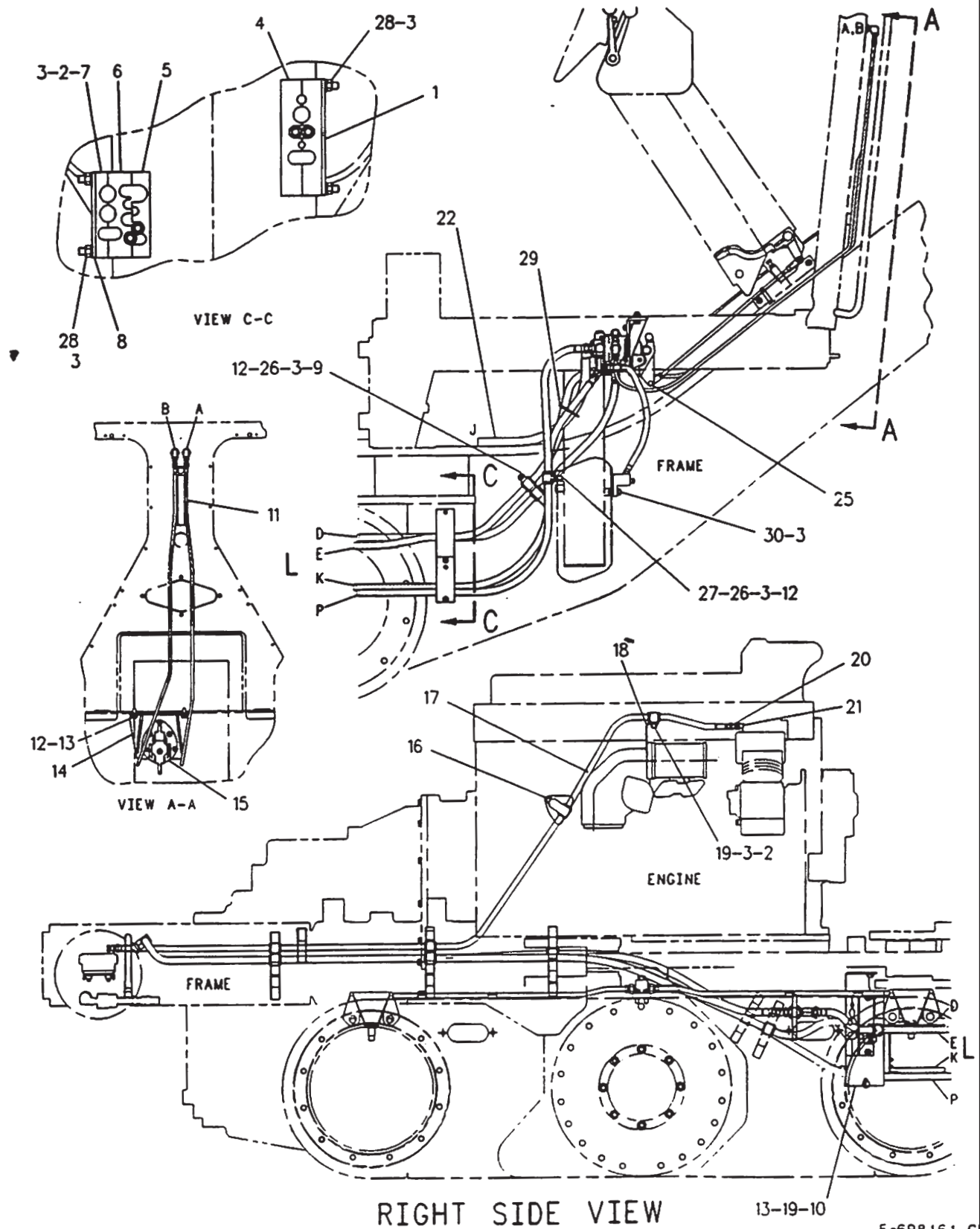
# BRAKING SYSTEM

NOTE	REF NO	PART NUMBER	QTY	PART NAME	NOTE	REF NO	PART NUMBER	QTY	PART NAME
	1	8X8450	1	PLATE					
	2	6V8801	3	NUT (3/8-16 THD)					
	3	8T4896	10	WASHER-HARD (2.5MM THK)					
	4	8W8537	2	CLAMP					
	5	8X8921	1	CLAMP					
	6	8X8271	1	CLAMP					
	7	8X7601	1	CLAMP					
	8	8X8451	1	PLATE					
	9	8W8532	1	CLIP					
	10	8X8448	1	BRACKET AS					
		9F2978	2	NUT-WELD (3/8-16 THD)					
		8X8928	2	STUD					
	11	8X7603	2	HOSE AS					
	12	4L6454	4	BOLT (3/8-16X1IN)					
	13	5P1075	6	WASHER-HARD (3MM THK)					
	14	8X2680	1	BRACKET AS					
Y	15	8X2650	1	VALVE GP-AIR CONTROL (BRAKE)					
	16	8W1614	2	CLIP					
I	17	4S7558	1	HOSE AS					
	18	9L1566	1	SUPPORT-TUBE					
	19	5M3062	5	BOLT (3/8-16X.750IN)					
	20	4D2560	1	CONNECTOR-PIPE					
E	21	4M8973	1	ELBOW					
	22	5P0767	1	HOSE (60 CM)					
	23	5T8285	1	JUNCTION BLOCK					
	24	5M6213	1	PLUG					
	25	1B0676	1	PIN					
	26	8W8527	4	SLEEVE					
	27	8W8903	1	CLIP					
	28	3K6060	4	LOCKNUT (3/8-16 THD)					
	29	3S2093	1	STRAP-CABLE (1.75IN DIA)					
	30	8T2502	1	BOLT					

E-ORDER BY THE CENTIMETER  
 I-SEE HOSE FABRICATION GUIDE  
 Y-SEPARATE ILLUSTRATION

698162 CP

# BRAKING SYSTEM



F-698161 C

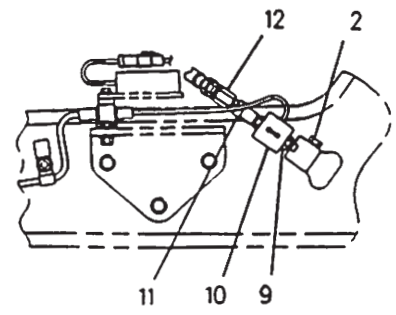
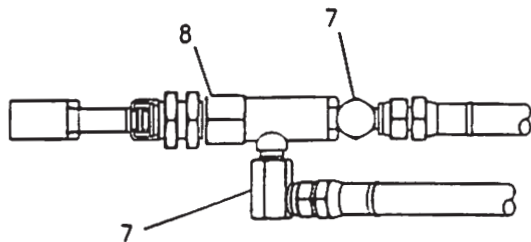
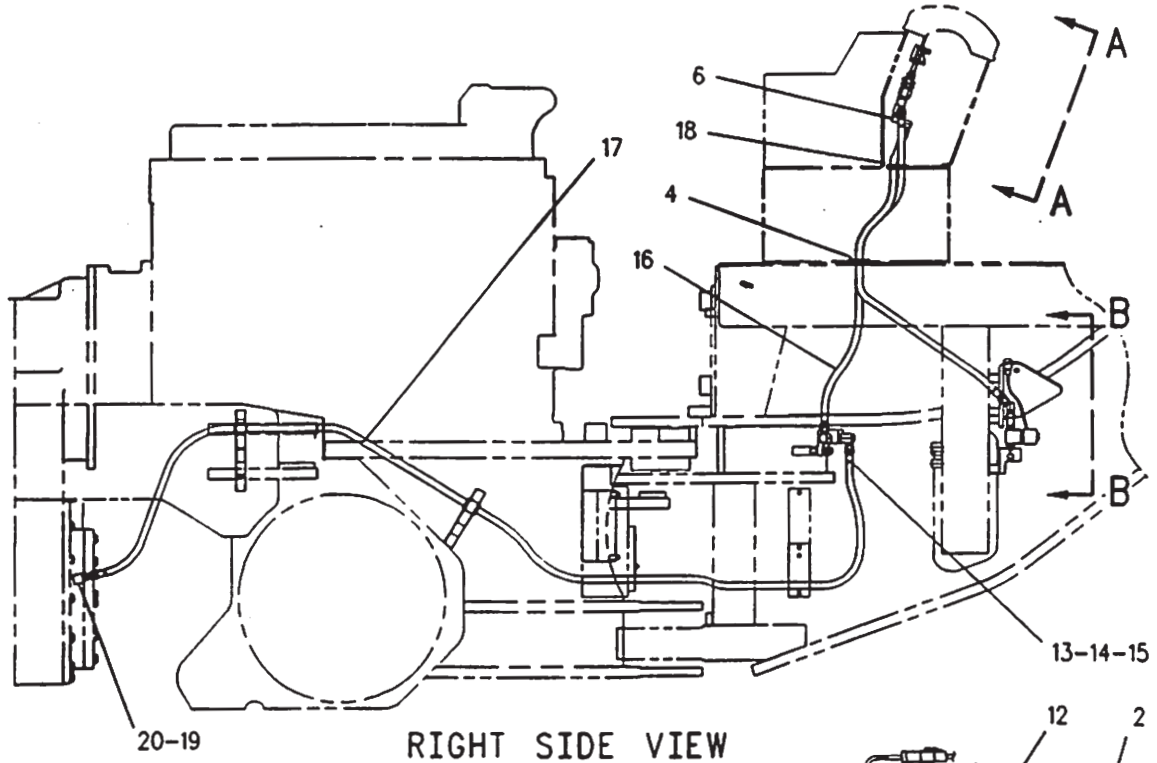
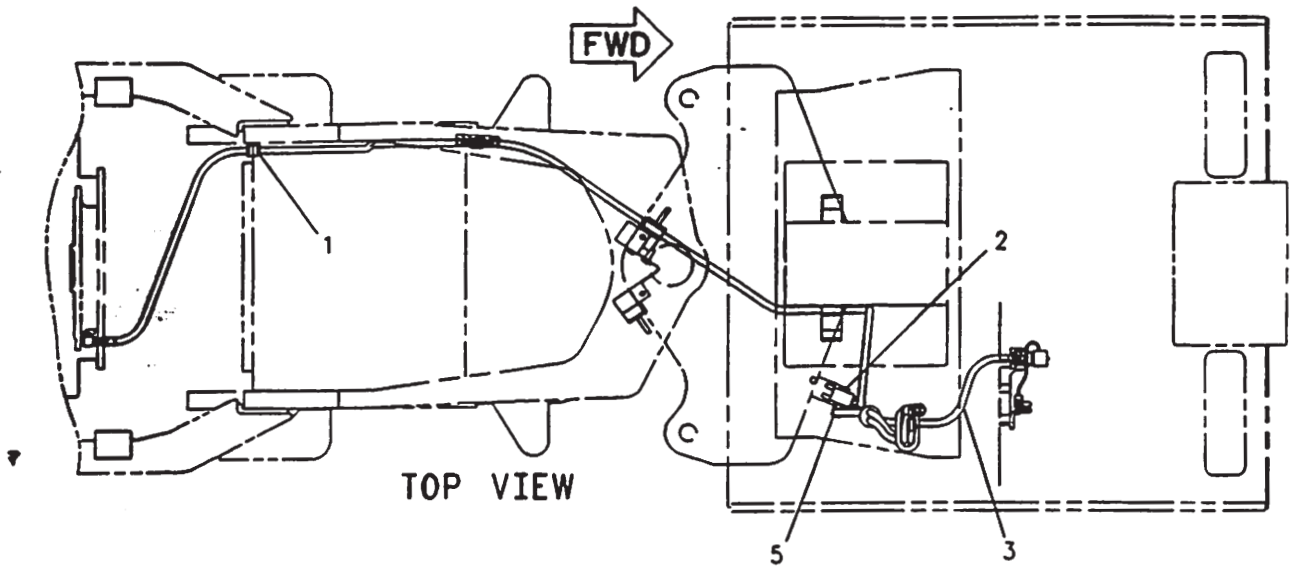
# BRAKING SYSTEM

NOTE	REF NO	PART NUMBER	QTY	PART NAME	NOTE	REF NO	PART NUMBER	QTY	PART NAME
I	1	8W8528	2	SLEEVE					
	2	5M6213	2	PLUG					
	3	4S7529	1	HOSE AS					
	4	8X5160	1	GROMMET					
	5	5H4778	2	ELBOW					
	6	3B8822	1	ELBOW					
	7	4S7606	2	ELBOW					
Y	8	5D4382	1	VALVE AS-AIR CONTROL (PARKING BRAKE)					
	9	5K2408	2	NIPPLE-HEX					
Y	10	7T9074	1	VALVE GP-SOLENOID (PARKING BRAKE)					
	11	6D1432	1	VALVE-CHECK					
	12	3D7587	1	ELBOW					
	13	5T8285	1	JUNCTION BLOCK					
	14	8T2502	2	BOLT (3/8-16X1.125IN)					
	15	8T4896	2	WASHER-HARD (2.5MM THK)					
I	16	1124834	1	HOSE AS					
	17	7D3963	1	HOSE AS					
	18	7X4736	1	GROMMET					
	19	4H6147	1	CONNECTOR-PIPE					
	20	3D8884	1	ELBOW-90 DEGREE					

I-SEE HOSE FABRICATION GUIDE  
Y-SEPARATE ILLUSTRATION

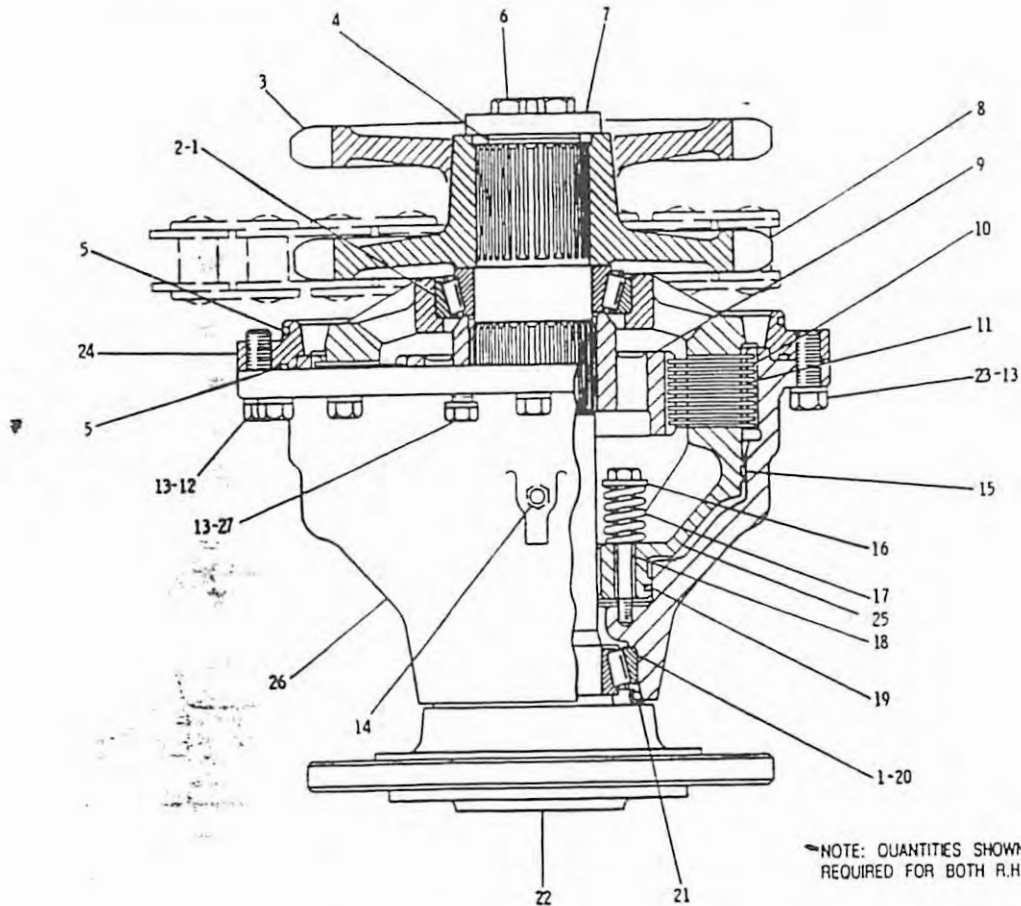
698308 CP

# BRAKING SYSTEM



F-698307 CP

# BRAKING SYSTEM



NOTE: QUANTITIES SHOWN ARE THOSE  
REQUIRED FOR BOTH R.H. & L.H. SIDES

NOTE	REF NO	PART NUMBER	QTY	PART NAME	NOTE	REF NO	PART NUMBER	QTY	PART NAME
	1	1P4693	8	CUP-ROLLER BEARING	C	23	8T6472	40	BOLT-LOCKING
	2	7D8437	4	CONE-ROLLER BEARING	C	24	7D8363	4	COVER
	3	7D8354	2	SPROCKET (REAR MTG)		25	6G5704	4	PISTON
B	4	7D8439	20	SHIM .18MM(.007IN)THK	C	26	8W8124	4	HOUSING
B		7D8441	28	SHIM .13MM(.005IN)THK	C	27	8T6473	8	BOLT-LOCKING
B		9D7047	8	SHIM .15MM(.020IN)THK					
	5	4S5879	8	SEAL-O-RING					
	6	5P9118	12	BOLT-LOCKING					
	7	9D3075	4	RETAINER					
	8	7D8354	2	SPROCKET (FRONT MTG)					
	9	2G6337	4	HUB-BRAKE					
	10	7D8434	40	DISC					
	11	6Y7916	36	DISC-FRICTION					
C	12	OS1566	16	BOLT					
C	13	4D3704	64	WASHER-HARD					
	14	3J5390	4	PLUG					
	15	4D5497	4	SEAL-D-RING					
	16	4B4279	24	WASHER					
	17	9J5498	24	SPRING					
	18	6G0905	24	BOLT					
	19	7D8436	4	SEAL-D-RING					
	20	4B7270	4	CONE-BEARING					
R	21	5K5288	4	SEAL GP-DUO-CONE (EACH INCLUDES)					
		5K5129	2	RING-SEALING					
C	22	8W2929	4	SPINDLE-WHEEL					

B-USE AS REQUIRED  
C-CHANGE FROM PREVIOUS TYPE  
R-REMG PART MAY BE AVAILABLE

B-638070 CP

4251

7D8440 BRAKE GP-SERVICE  
Part Of 1124121 Power Train Ar