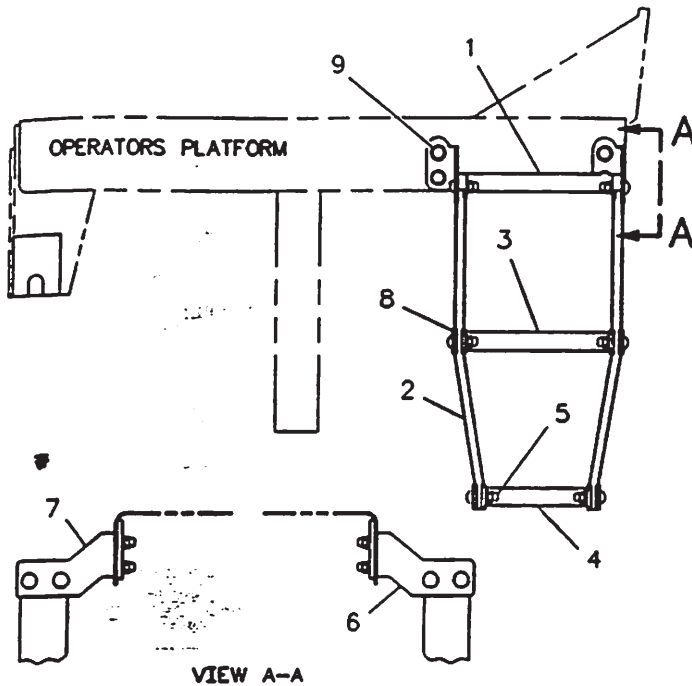


# FRAME AND BODY



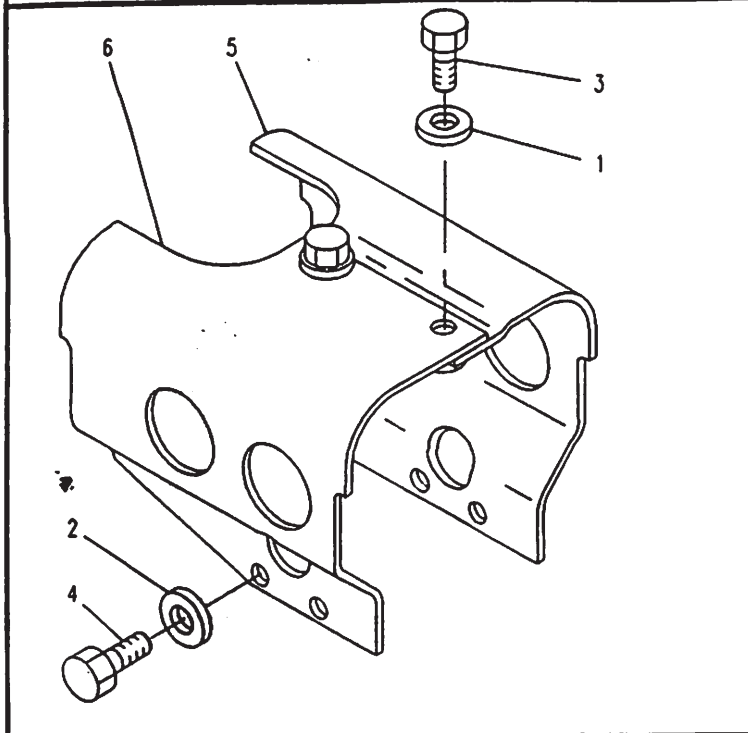
NOTE	REF NO	PART NUMBER	QTY	PART NAME
	1	8W7388	2	STEP AS
	2	8X1032	4	BELT
	3	4V9810	2	STEP AS
	4	4V9809	2	STEP AS
	5	1D4689	24	BOLT
		1K6872	24	LOCKNUT
		8T4223	24	WASHER-HARD (3MM THK)
	6	1233699	2	PLATE
	7	1233698	2	PLATE
	8	4V9804	8	PLATE
	9	8T8919	8	BOLT (1/2-13X1.50IN)
		5P1076	8	WASHER-HARD (4MM THK)

R-599556 CP

7254

8X1030 STEP GP  
Part Of 1124112 Chassis Ar

# FRAME AND BODY



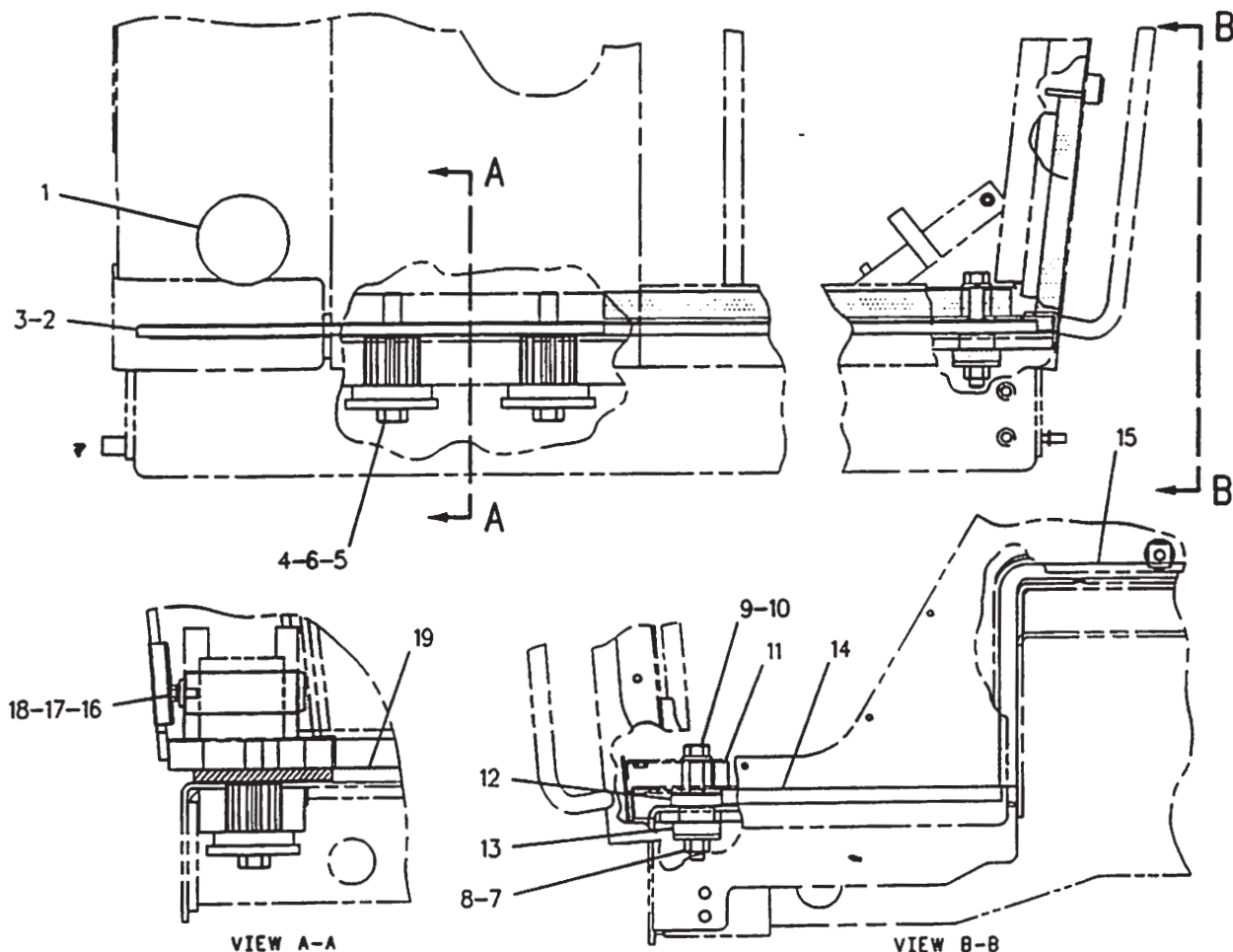
NOTE	REF NO	PART NUMBER	QTY	PART NAME
	1	5P1075	2	WASHER-HARD
	2	8T7971	4	WASHER-HARD
	3	5S7379	2	BOLT
	4	5C6565	4	BOLT
	5	1035419	1	SHIELD AS
		9F2978	2	NUT-WELD
	6	1035417	1	SHIELD

F-555270 EP

7153

**8W5870 SHIELD GP-DRIVE SHAFT**  
Part Of 1124112 Chassis Ar

# FRAME AND BODY



NOTE	REF NO	PART NUMBER	QTY	PART NAME	NOTE	REF NO	PART NUMBER	QTY	PART NAME
	1	3E4048	2	CAP-PLUG					
	2	1035515	1	PAD-RH					
	3	1035516	1	PAD-LH					
	4	1034953	4	MOUNTING					
	5	7X0375	4	BOLT (3/4-10X5IN)					
	6	8X0674	4	WASHER					
	7	383987	2	WASHER					
	8	4K0367	2	NUT					
	9	7X0354	2	BOLT					
	10	8T4122	2	WASHER					
	11	8X6131	2	SEAL					
	12	2G8641	2	PAD					
	13	9D1589	2	MOUNTING					
	14	2G7098	2	PAD					
	15	2G7097	1	PAD					
	16	1034771	2	PIN AS					
	17	308535	2	BOLT-LOCKING					
	18	8T4896	2	WASHER-HARD					
E	19	1236806		SEAL (86.8CM)					

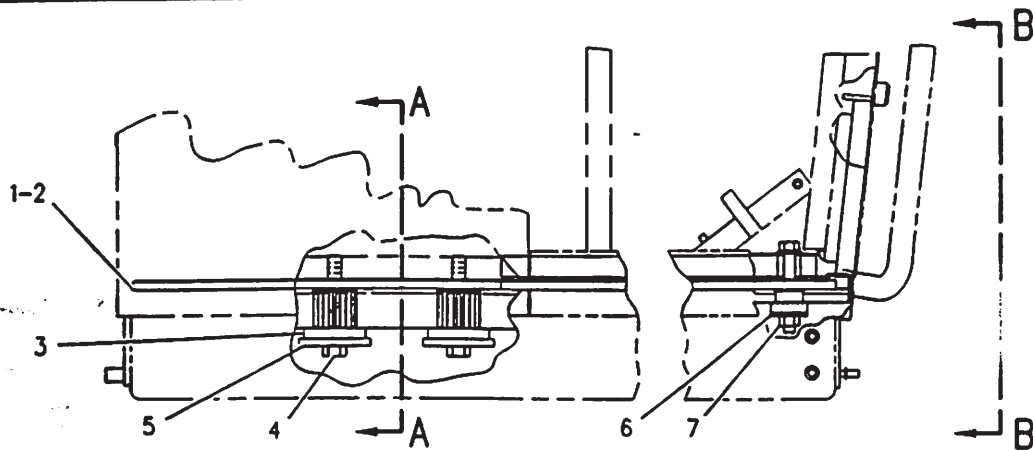
E-ORDER BY THE CENTIMETER

F-599831 CP

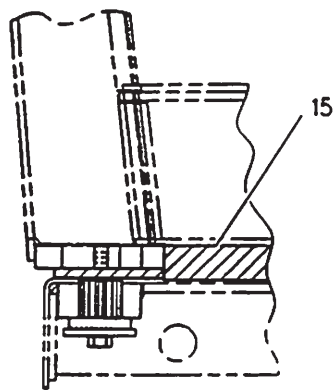
7266

2A6985 MOUNTING GP-ROPS  
Part Of 8X2241, 8X2243 ROPS

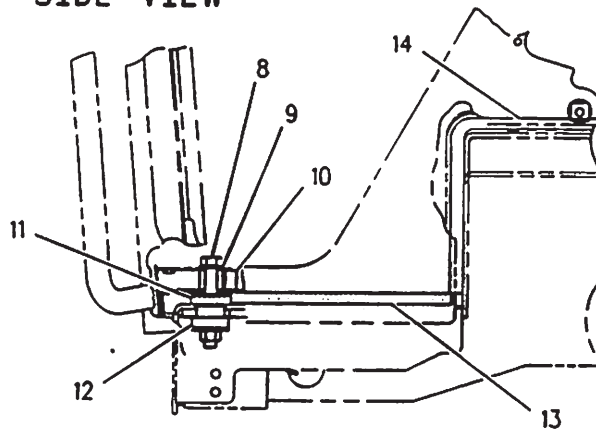
# FRAME AND BODY



RIGHT SIDE VIEW



SECTION A-A



VIEW B-B

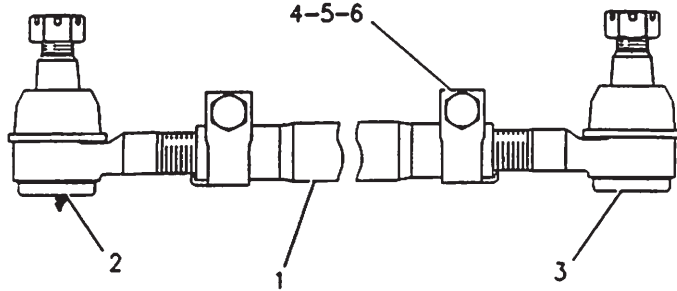
NOTE	REF NO	PART NUMBER	QTY	PART NAME	NOTE	REF NO	PART NUMBER	QTY	PART NAME
	1	1035515	1	PAD-RH					
	2	1035516	1	PAD-LH					
	3	1034953	4	MOUNTING					
	4	7X0375	4	BOLT (3/4-10X5IN)					
	5	8X0674	4	WASHER					
	6	383987	2	WASHER					
	7	4K0367	2	NUT					
	8	7X0354	2	BOLT (5/8-11X4.50IN)					
	9	8T4122	2	WASHER					
	10	8X6131	2	SEAL					
	11	2G8641	2	PAD					
	12	9D1589	2	MOUNTING					
	13	2G7098	2	PAD					
	14	2G7097	1	PAD					
	15	1236806		SEAL (87CM)					

F-634044 CP

7301

1254344 MOUNTING GP-CAB  
Non-ROPS. Enclosed

# FRAME AND BODY



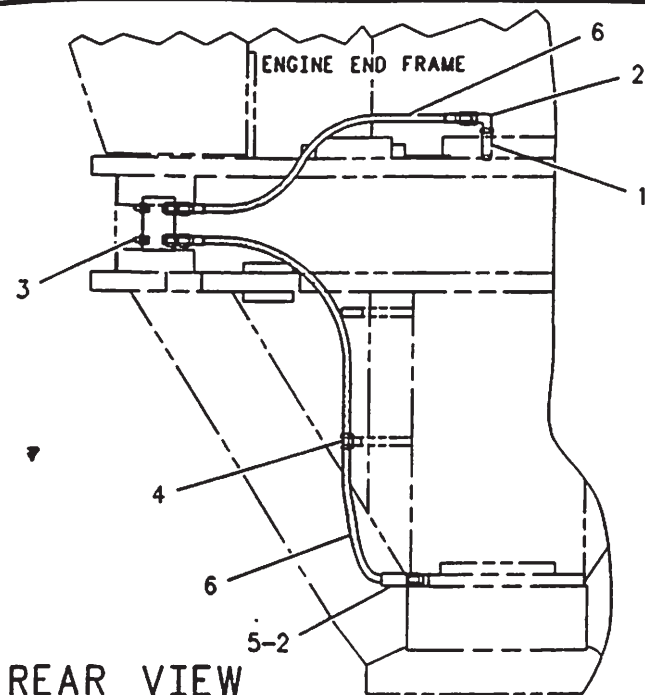
NOTE	REF NO	PART NUMBER	QTY	PART NAME
	1	1313739	1	TIE ROD
	2	1313738	1	SOCKET AS
		2F8057	1	NUT-SLOTTED
		1321143	1	SEAL-BOOT
	3	1313737	1	SOCKET AS
		2F8057	1	NUT-SLOTTED
		1321143	1	SEAL-BOOT
	4	1321144	2	CLAMP
	5	1B4367	2	BOLT (5/8-11X3IN)
	6	3K2889	2	LOCKNUT (5/8-11 THD)

F-626324 CP

5305

1313740 LINK GP-STEERING  
S/N 8MN500-Up  
Part Of 1341080 Axle-Front

# FRAME AND BODY



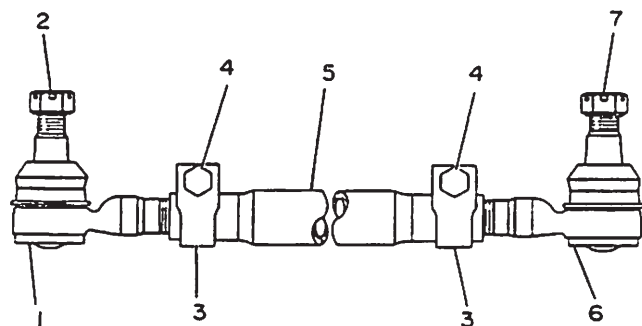
NOTE	REF NO	PART NUMBER	QTY	PART NAME
I	1	3B7733	1	NIPPLE-PIPE
	2	3B6769	2	ELBOW
	3	3B8489	2	FITTING-GREASE
	4	4D7794	1	CLIP (10 MM ID)
	5	5H7826	1	NIPPLE-PIPE
	6	3G6659	2	HOSE AS

I-SEE HOSE FABRICATION GUIDE

F-609424 CP

7510

714610 LINES GP-GREASE  
Part Of 1124112 Chassis Ar



NOTE	REF NO	PART NUMBER	QTY	PART NAME
C C C	1	9D6524	1	SOCKET AS
	2	2F8057	1	NUT-SLOTTED
	3	5D6952	2	CLAMP
	4	1B4367	2	BOLT
	5	3K2889	2	LOCKNUT
	6	9D6523	1	SOCKET AS
	7	2F8057	1	NUT-SLOTTED

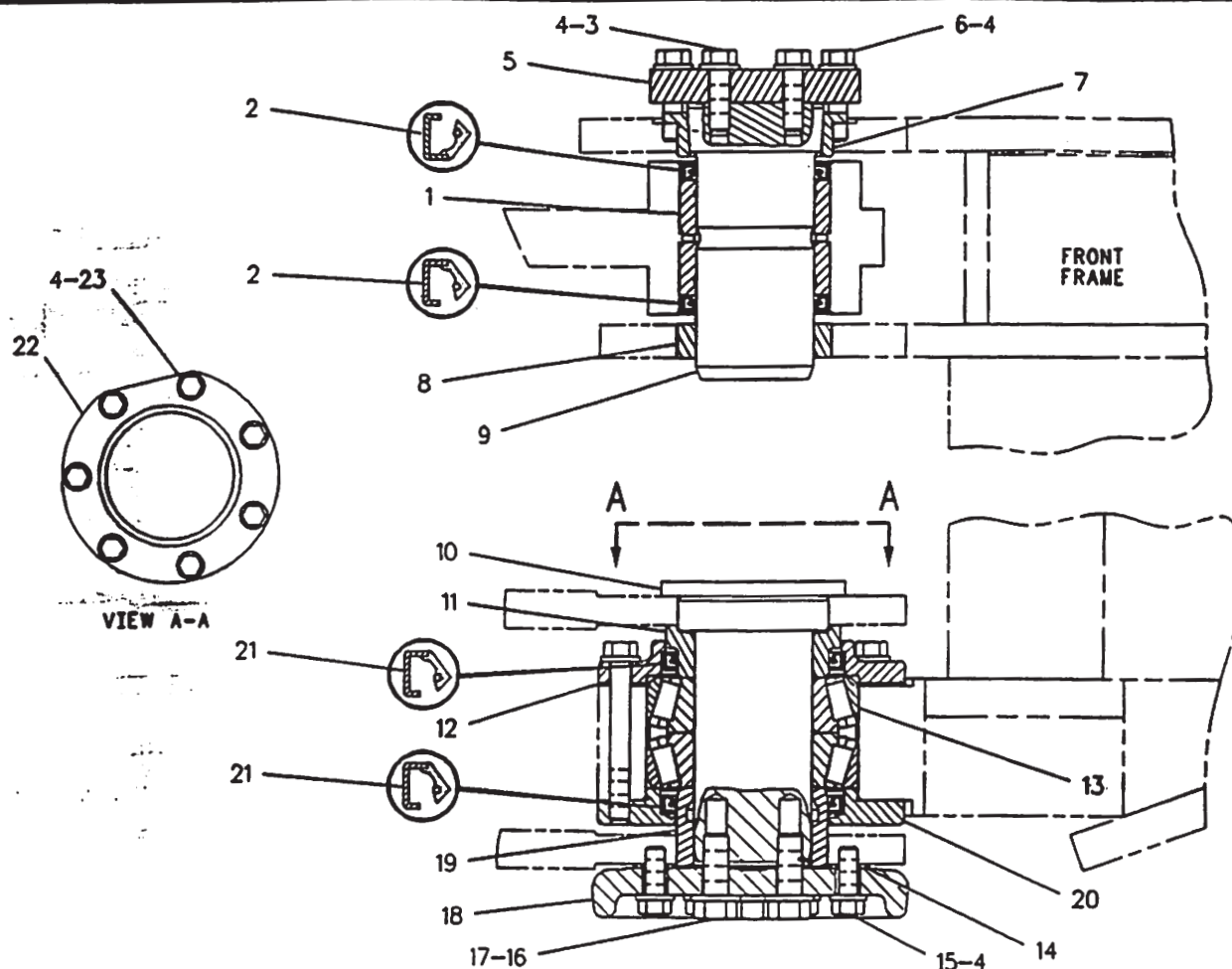
C-CHANGE FROM PREVIOUS TYPE

B-332342 EP

4305

7D8912 LINK GP-STEERING  
S/N 8MN1-499  
Part Of 1018075 Axle-Front

# FRAME AND BODY

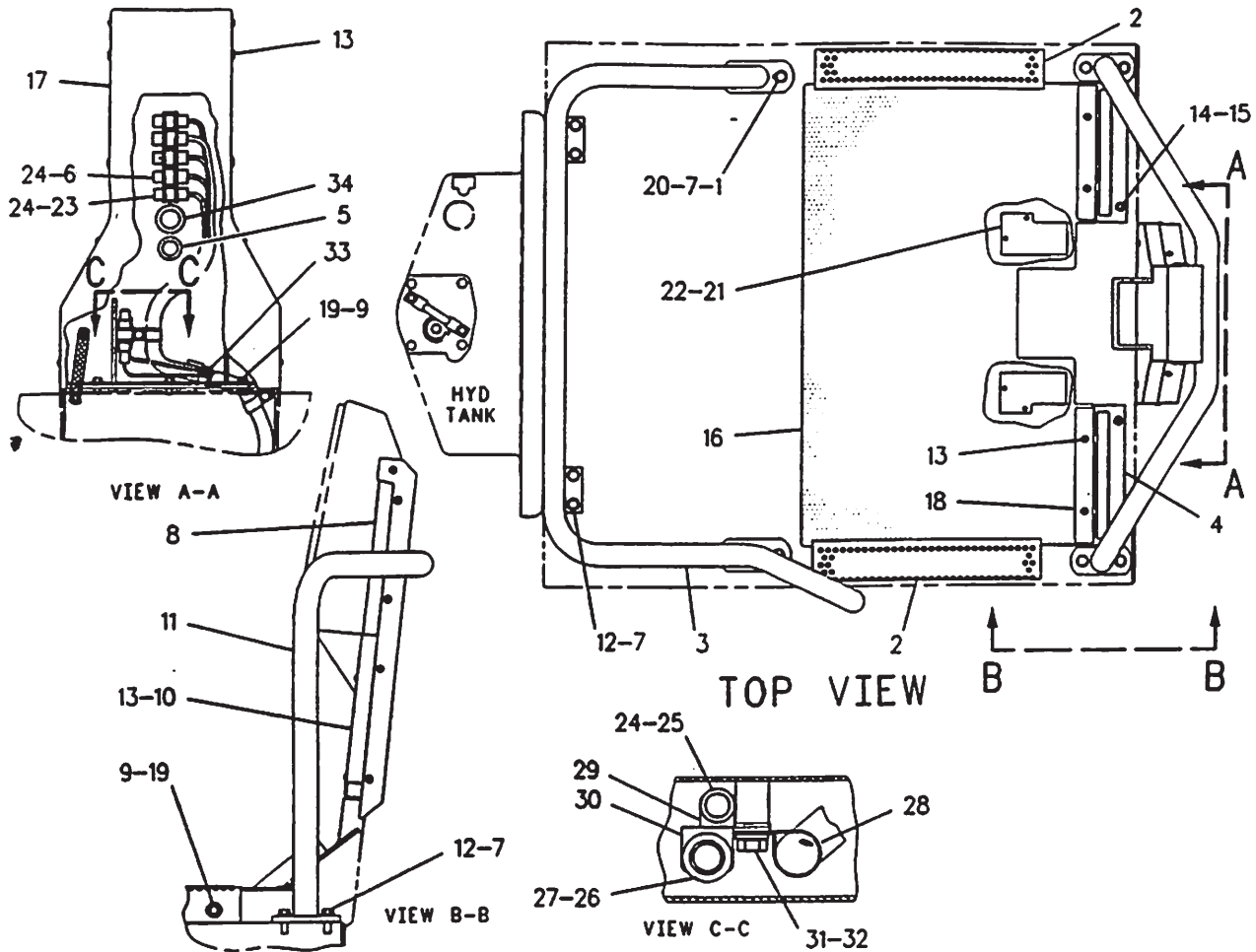


NOTE	REF NO	PART NUMBER	QTY	PART NAME	NOTE	REF NO	PART NUMBER	QTY	PART NAME
	1	4K8659	1	BEARING-SLEEVE					
	2	4K7463	2	SEAL-LIP					
	3	OS1587	2	BOLT (1/2-13X1.75IN)					
	4	5P8245	19	WASHER					
	5	6G0417	1	COVER					
	6	1A1460	4	BOLT (1/2-13X2IN)					
	7	2V4331	1	COLLAR					
	8	5K0984	1	BEARING-SLEEVE					
	9	1243240	1	PIN					
	10	5K0871	1	PIN-LOWER					
	11	5K0987	1	SPACER					
B	12	5K0988	1	SHIM PACK (18 SHIMS)					
	13	5K0985	1	BEARING AS-ROLLER					
B	14	4K7464	1	SHIM PACK (19 SHIMS)					
	15	7B3235	6	BOLT (1/2-13X1.375IN)					
	16	OS1589	4	BOLT (5/8-11X1.75IN)					
	17	5P8247	4	WASHER-HARD					
	18	4V0015	1	PLATE-LOCKING					
	19	4K6781	1	SPACER					
	20	5K0991	1	CAP-LOWER					
	21	5K0983	2	SEAL-LIP					
	22	5K0989	1	CAP-UPPER					
	23	1D4569	7	BOLT (1/2-13X4.25IN)					

B-USE AS REQUIRED

F-597719 CP

# FRAME AND BODY



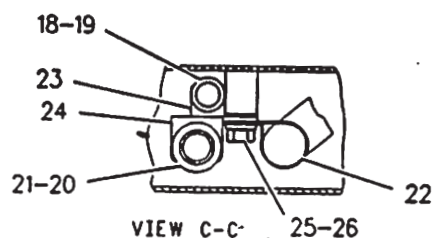
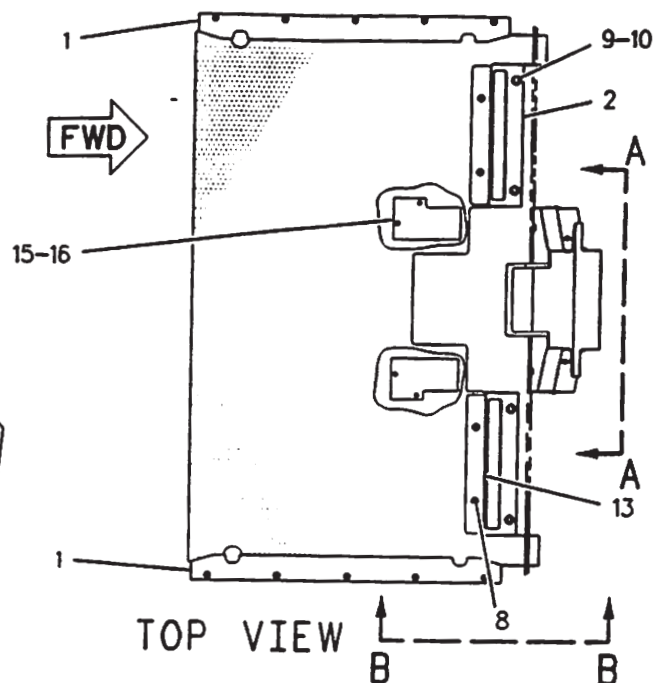
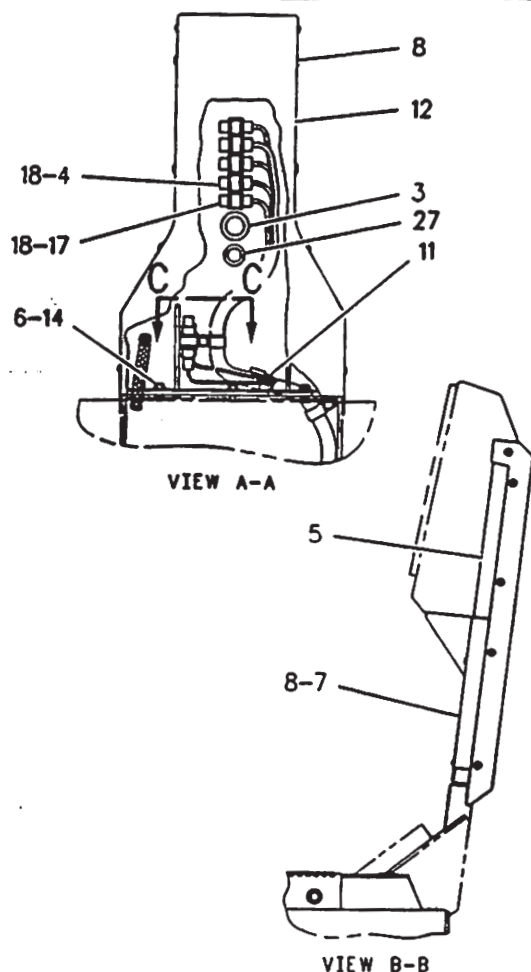
NOTE	REF NO	PART NUMBER	QTY	PART NAME	NOTE	REF NO	PART NUMBER	QTY	PART NAME
M	1	7X0328	4	BOLT (1/2-13X3.50IN)	21	8X8505	2	PLATE	
	2	8X9464	2	STEP AS	22	6V2687	4	SCREW-PAN HEAD	
	3	8W3902	1	SUPPORT AS	23	9G3670	1	HOUSING-PLUG	
	4	8X2913	2	COVER AS	24	9G3695	21	PLUG-SEAL	
				(EACH INCLUDES)	25	7N8204	1	HOUSING-RECEPTACLE	
		6V9632	1	NUT-WELD	26	9G4352	1	HOUSING-RECEPTACLE	
	5	3H2900	1	GROMMET	27	7G7919	1	PLUG-SEAL	
	6	9G3667	1	HOUSING-PLUG	28	7C4354	1	CLIP (25.4MM ID)	
	7	8T4223	16	WASHER-HARD	29	9G9152	1	CLIP (10.5MM ID)	
	8	8X6478	1	PANEL AS	30	9G9154	1	CLIP (10.5MM ID)	
M		4K8479	7	STUD-WELD	31	5S7379	1	BOLT (3/8-16X.875IN)	
		6V9632	1	NUT-WELD	32	8T4896	1	WASHER-HARD	
		9D5659	1	BOSS (3/8-16 THD)	33	3S2093	1	STRAP-CABLE (1.75IN DIA)	
		1019520	8	CLIP (1/4-20X.750IN)					
	9	5P1075	7	WASHER-HARD					
M	10	8X7978	1	COVER					
	11	13S3894	1	PIPE AS					
	12	5P2566	8	BOLT (1/2-13X1.50IN)					
	13	9X2043	16	SCREW-TRUSS HEAD					
	14	4M5281	4	BOLT (1/4-20X.750IN)					
	15	5P4115	4	WASHER					
	16	8X6419	1	FLOOR MAT					
	17	8X6496	1	PANEL					
	18	8X6475	2	PLATE					
	19	4L6454	7	BOLT (3/8-16 X 1.0IN)					
	20	6V8188	4	NUT					

M-METRIC PART

F-642337 CP



# FRAME AND BODY

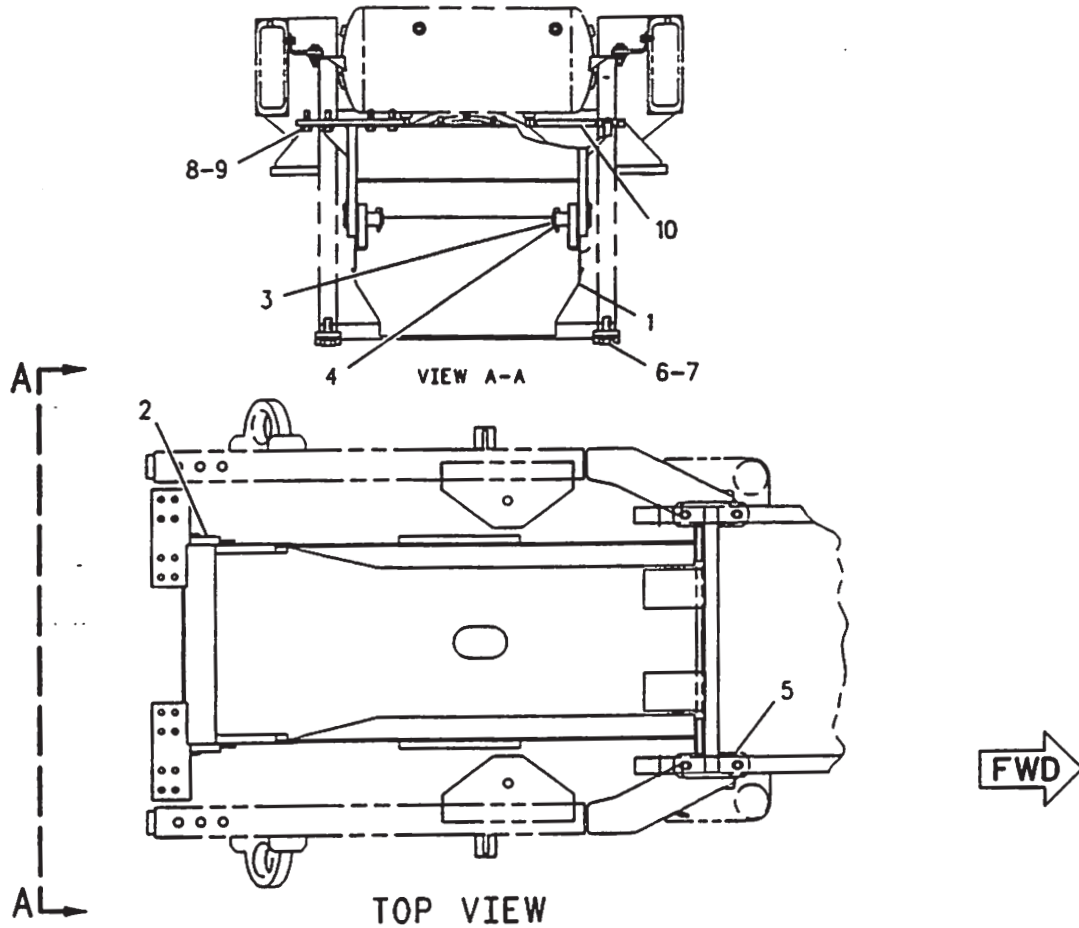


NOTE	REF NO	PART NUMBER	QTY	PART NAME	NOTE	REF NO	PART NUMBER	QTY	PART NAME
M I	1	8X2226	2	PLATE		22	7C4354	1	CLIP (25.4MM ID)
	2	8X2913	2	COVER AS (EACH INCLUDES)		23	9G9152	1	CLIP (10.5MM ID)
	3	6V9632	2	NUT-WELD		24	9G9154	1	CLIP (10.5MM ID)
	4	8Y8608	1	HOSE AS		25	5S7379	1	BOLT (3/8 X 16 X .875IN)
M	5	9G3667	1	HOUSING-PLUG		26	8T4896	1	WASHER-HARD
	6	8X6478	1	PANEL AS		27	3P3839	1	GROMMET
	7	4K8479	7	STUD-WELD					
	8	6V9632	1	NUT-WELD					
M	9	9D5659	18	BOSS					
	10	1019520	4	CLIP					
	11	5P1075	3	WASHER-HARD					
	12	8X7978	1	COVER					
	13	9X2043	26	SCREW-TRUSS HEAD					
	14	4M5281	4	BOLT (1/4-20X.750IN)					
	15	5P4115	4	WASHER					
	16	3S2093	1	STRAP-CABLE (1.75IN DIA)					
	17	8X6496	1	PANEL					
	18	8X6475	2	PLATE					
	19	4L6454	3	BOLT (3/8 X 16 X 1.0IN)					
	20	8X8505	2	PLATE					
	21	6V2687	4	SCREW-PAN HEAD					
	22	9G3670	1	HOUSING-PLUG					
	23	9G3695	21	PLUG-SEAL					
	24	7N8204	1	HOUSING-RECEPTACLE					
	25	9G4352	1	HOUSING-RECEPTACLE					
	26	7G7919	1	PLUG-SEAL					

I-SEE HOSE FABRICATION GUIDE  
M-METRIC PART

F-642319 CP

# FRAME AND BODY



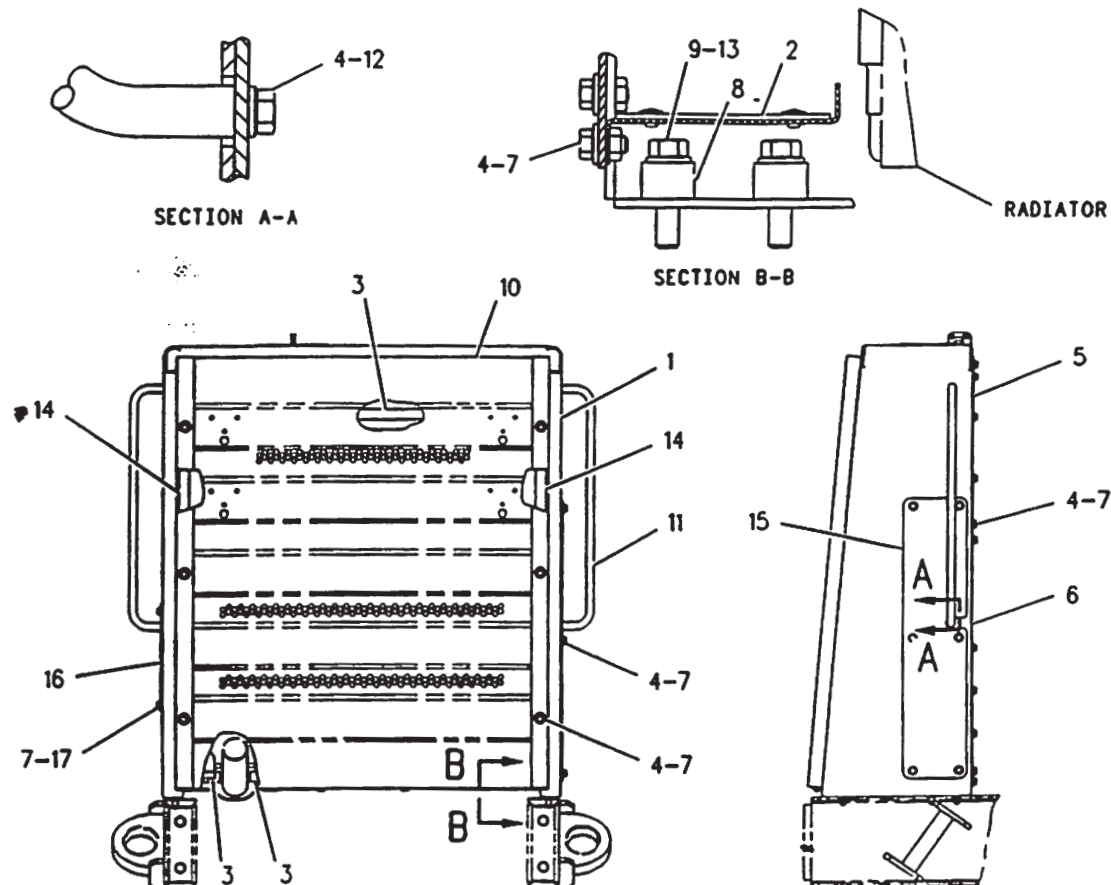
NOTE	REF NO	PART NUMBER	QTY	PART NAME	NOTE	REF NO	PART NUMBER	QTY	PART NAME
	1	8W8412	1	GUARD AS					
	2	8W6627	1	SUPPORT AS					
	3	8K0530	2	PIN-CABLE SOCKET					
	4	7D7496	2	PIN AS					
	5	8W6626	2	CAP					
	6	OL1178	4	BOLT (3/4-10X2IN)					
	7	5P6652	4	WASHER (6.0MM THK)					
	8	5P2566	8	BOLT (1/2-13X1.5IN)					
	9	8T4223	8	WASHER-HARD (4MM THK)					
	10	3B7740	2	NIPPLE-PIPE					

F-623273 CP

7153

8W6230 GUARD GP-BOTTOM  
Part Of 1341213 Merchandise Ar

# FRAME AND BODY



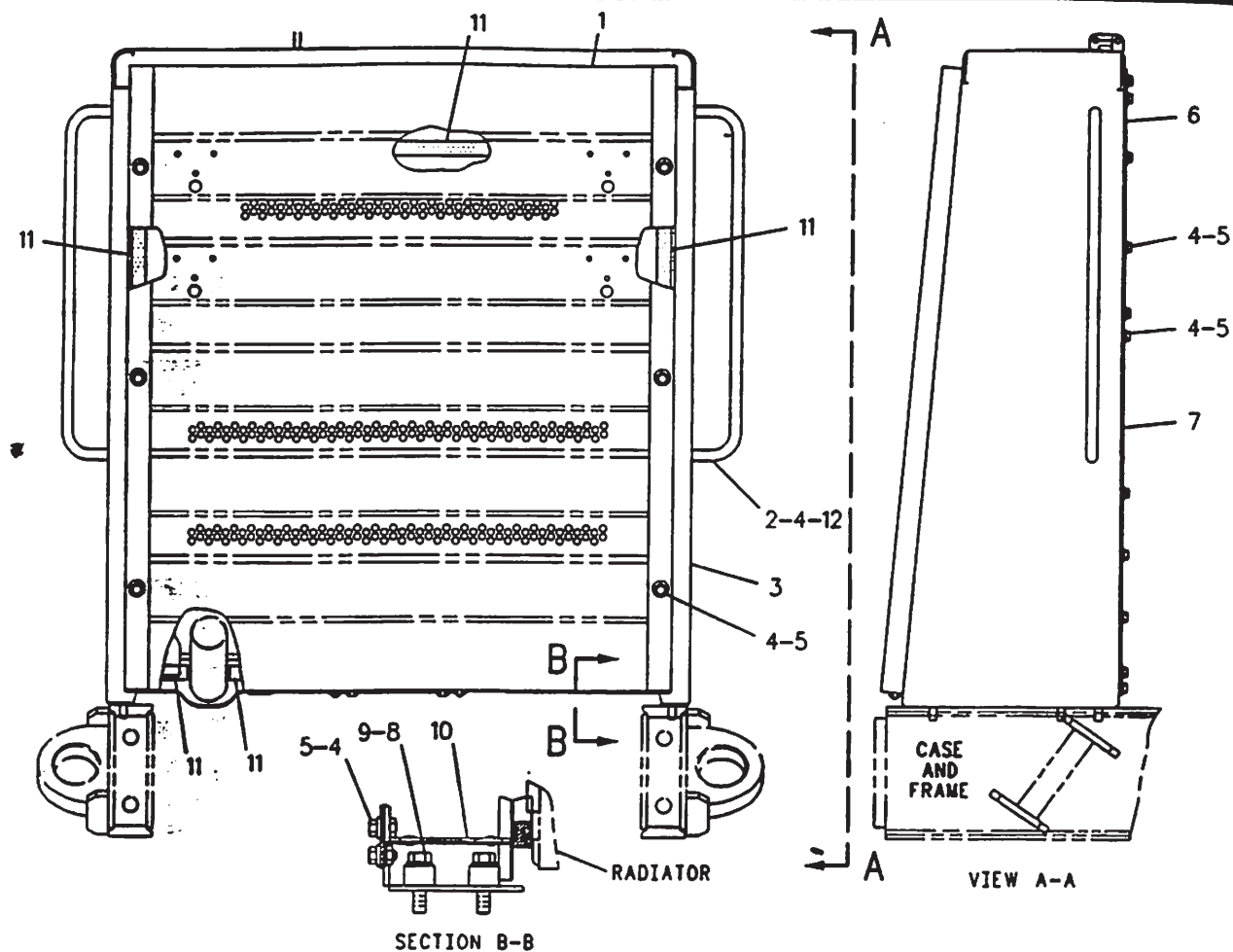
NOTE	REF NO	PART NUMBER	QTY	PART NAME	NOTE	REF NO	PART NUMBER	QTY	PART NAME
D	1	1383760	1	SUPPORT AS					
		1F0750	48	NUT-WELD					
		9M5732	3	RIVET-POP					
	2	1383779	1	PLATE AS					
		1F0750	5	NUT-WELD					
		4B4274	4	WASHER					
		9M5732	4	RIVET-POP					
	3	5P9909		SEAL (1.8M)					
	4	5M3062	50	BOLT					
	5	1383780	1	SHIELD AS					
		4B4274	4	WASHER					
		9M5732	4	RIVET-POP					
	6	1407617	1	PLATE					
	7	5P1075	50	WASHER-HARD					
	8	1W8793	6	SPACER					
	9	5P8245	6	WASHER					
	10	1031596	1	SUPPORT AS					
E		1F0750	2	NUT-WELD					
	11	1139517	2	HANDHOLD					
	12	8T4896	4	WASHER-HARD					
	13	8T4835	6	BOLT					
	14	1233827		SEAL (178CM)					
	15	1387063	1	PLATE					
	16	1387062	1	PLATE					
	17	9B7237	4	BOLT					

D-ORDER BY THE METER  
E-ORDER BY THE CENTIMETER

F-677366 CP

1407616 GUARD & SUPPORT GP-RADIATOR  
S/N 8MN460-Up

# FRAME AND BODY



SECTION B-B

NOTE	REF NO	PART NUMBER	QTY	PART NAME	NOTE	REF NO	PART NUMBER	QTY	PART NAME
BD	1	1031596	1	SUPPORT AS					
		9F2978	2	NUT-WELD					
		5D9629	5	ROD					
	2	1139517	2	HANDHOLD					
	3	1041956	1	SUPPORT AS					
		9F2978	42	NUT-WELD					
		9M5732	3	RIVET-POP					
	4	5M3062	44	BOLT (3/8-16X.750IN)					
	5	5P1075	40	WASHER-HARD (3MM THK)					
	6	2A7326	1	SHIELD AS					
		4B4274	4	WASHER					
		9M5732	4	RIVET-POP					
	7	2A7136	1	PLATE					
	8	8T4835	6	BOLT					
		5P8245	6	WASHER (3MM THK)					
	9	1W8793	6	SPACER					
	10	714616	1	PLATE AS					
		9F2978	5	NUT-WELD					
		4B4274	4	WASHER					
		9M5732	4	RIVET-POP					
	11	5P9909		SEAL					
	12	8T4896	4	WASHER-HARD					

B-USE AS REQUIRED  
D-ORDER BY THE METER

F-600802 CP

7155

8W5385 GUARD & SUPPORT GP-RADIATOR  
S/N 8MN1-459

# FRAME AND BODY

NOTE	REF NO	PART NUMBER	QTY	PART NAME	NOTE	REF NO	PART NUMBER	QTY	PART NAME
D	1	5P5969		SEAL					
	2	9D9257	1	PIN					
	3	8D3791	1	PIN					
	4	4L6454	7	BOLT					
	5	8D9159	4	BEARING-SLEEVE					
	6	9D6589	8	SEAL-LIP					
	7	9D3311	1	BEARING-SLEEVE					
	8	9D6584	1	SEAL-LIP					
	9	8X3200	1	PLATE AS					
		9F2978	4	NUT-WELD					
		7D1151	1	BLOCK					
	10	5P1075	27	WASHER-HARD					
	11	1113945	2	PLATE					
	12	1455968	1	COVER -RH					
	13	1455969	1	COVER -LH					
	14	5P8167	3	BOLT					
	15	5M3062	20	BOLT					
	16	6K4076	1	BEARING-SLEEVE					
	17	1442161	1	PLATE					
	18	1442162	1	INSULATION					
	19	8T4896	16	WASHER-HARD					
	20	1412989	1	FRAME AS-PLATFORM & SEAT					
	21	4D6293	1	BOSS					
	22	5P9743	2	BOSS-WELD					
	23	5T9020	4	LUG					
	24	6J0499	4	LUG					
	25	8D8879	2	STUD					
	26	9D5567	3	BOSS					
	27	9D5568	1	BOSS					
	28	9D5571	1	BOSS					
	29	9D5659	18	BOSS					
	30	9D6166	7	BOSS					
	31	9D6168	1	BOSS					
	32	1412986	1	FRAME AS					
	33	1F5339	4	LUG					
	34	2W8143	4	BOSS-THREADED					
	35	8T5911	4	NUT-WELD					
	36	8T5912	10	NUT-WELD					
	37	9D5657	1	BOSS					
	38	9D5659	7	BOSS					
	39	9D6164	1	BOSS					
	40	9F6445	4	NUT					
	41	9G9151	2	CLIP					
	42	9G9153	1	CLIP					
	43	1049726	2	PLATE					
	44	1F0750	9	NUT-WELD					

O-ORDER BY THE METER

694744 CP

1412990 FRAME GP-FRONT

S/N 8MN500-Up

Part of 1412990 Chassis As

# FRAME AND BODY

This technical drawing illustrates the frame and body of a mechanical assembly, featuring a main perspective view and several detailed cross-sections and auxiliary views. The main view shows a curved frame structure with various components labeled with numbers. Key sections include:

- SECTION A-A:** A cross-section of the frame's upper portion, showing internal components like 5, 7, 8, and 6.
- SECTION B-B:** A cross-section of the frame's lower portion, showing internal components like 12-13, 26, 30, 29, 27, and 32.
- SECTION C-C:** A cross-section of the frame's side, showing internal components like 14, 29, and 3.
- SECTION D-D:** A cross-section of the frame's front, showing internal components like 18, 21, 42, 19, 39, 40, 38, 17, 36, 37, and 41.
- SECTION E-E:** A cross-section of the frame's rear, showing internal components like 2, 3, and 3.
- SECTION F-F:** A cross-section of the frame's side, showing internal components like 14, 29, and 3.
- SECTION G-G:** A cross-section of the frame's front, showing internal components like 18, 21, 42, 19, 39, 40, 38, 17, 36, 37, and 41.
- SECTION H-H:** A cross-section of the frame's rear, showing internal components like 2, 3, and 3.
- SECTION I-I:** A cross-section of the frame's side, showing internal components like 14, 29, and 3.
- SECTION J-J:** A cross-section of the frame's front, showing internal components like 18, 21, 42, 19, 39, 40, 38, 17, 36, 37, and 41.

The drawing also includes several auxiliary views and details:

- VIEW OF AREA A:** A detailed view of the frame's upper portion, showing components 5, 7, 8, and 6.
- VIEW OF AREA B:** A detailed view of the frame's lower portion, showing components 12-13, 26, 30, 29, 27, and 32.
- VIEW OF AREA C:** A detailed view of the frame's side, showing components 14, 29, and 3.
- VIEW OF AREA D:** A detailed view of the frame's front, showing components 18, 21, 42, 19, 39, 40, 38, 17, 36, 37, and 41.
- VIEW OF AREA E:** A detailed view of the frame's rear, showing components 2, 3, and 3.
- VIEW OF AREA F:** A detailed view of the frame's side, showing components 14, 29, and 3.
- VIEW OF AREA G:** A detailed view of the frame's front, showing components 18, 21, 42, 19, 39, 40, 38, 17, 36, 37, and 41.
- VIEW OF AREA H:** A detailed view of the frame's rear, showing components 2, 3, and 3.
- VIEW OF AREA I:** A detailed view of the frame's side, showing components 14, 29, and 3.
- VIEW OF AREA J:** A detailed view of the frame's front, showing components 18, 21, 42, 19, 39, 40, 38, 17, 36, 37, and 41.

The drawing is a technical illustration of a frame and body assembly, showing various components and their assembly details. The main view is a perspective view of the frame and body, with various components labeled with numbers. The drawing includes several cross-sections (A-A, B-B, C-C, D-D, E-E, F-F, G-G, H-H, I-I, J-J) and auxiliary views (VIEW OF AREA A, VIEW OF AREA B, VIEW OF AREA C, VIEW OF AREA D, VIEW OF AREA E, VIEW OF AREA F, VIEW OF AREA G, VIEW OF AREA H, VIEW OF AREA I, VIEW OF AREA J) to show the internal structure and assembly details of the frame and body. The drawing is a technical illustration of a frame and body assembly, showing various components and their assembly details.

F-694743 CP

F-694743 CP

1412990 FRAME GP-FRONT  
S/N 8MN500-Up  
Part Of 1404100 Chassis As



# FRAME AND BODY

NOTE	REF NO	PART NUMBER	QTY	PART NAME	NOTE	REF NO	PART NUMBER	QTY	PART NAME
	1	8W7284	1	FRAME AS-PLATFORM & SEAT					
	2	8F9836	1	LUG					
	3	9D5567	4	BOSS					
	4	9D5657	3	BOSS					
	5	9D6166	7	BOSS					
	6	9D5659	15	BOSS (3/8-16 THD)					
	7	4K8479	3	STUD-WELD					
	8	1051921	1	SUPPORT AS					
	9	1051922	1	SUPPORT AS					
	10	6J0499	3	LUG (1/2-13 THD)					
	11	1C1895	1	PIN					
	12	8P2813	2	BOSS					
	13	9D5568	2	BOSS					
	14	8D8879	2	STUD					
	15	7D3898	3	BOSS					
	16	5P9743	2	BOSS-WELD					
	17	5P1075	27	WASHER-HARD (3MM THK)					
	18	5M3062	20	BOLT (3/8-16X.750IN)					
	19	1113945	2	PLATE					
	20	1107004	1	COVER-RH					
	21	1107005	1	COVER-LH					
	22	4L6454	7	BOLT (3/8-16 X 1.0IN)					
	23	8X3200	1	PLATE AS					
		9F2978	4	NUT-WELD					
		7D1151	1	BLOCK					
		8G0452	6	LUG					
	24	8D3791	1	PIN					
	25	9D9257	1	PIN					
	26	8D9159	4	BEARING-SLEEVE					
	27	9D6589	8	SEAL-LIP					
	28	9D3311	1	BEARING-SLEEVE					
	29	9D6584	1	SEAL-LIP					
	30	5P8167	3	BOLT					
	31	6K4076	1	BEARING-SLEEVE					
	32	1442161	1	PLATE					
	33	1442162	1	INSULATION					
	34	8T4896	16	WASHER-HARD					
8D	35	5P5969		SEAL					

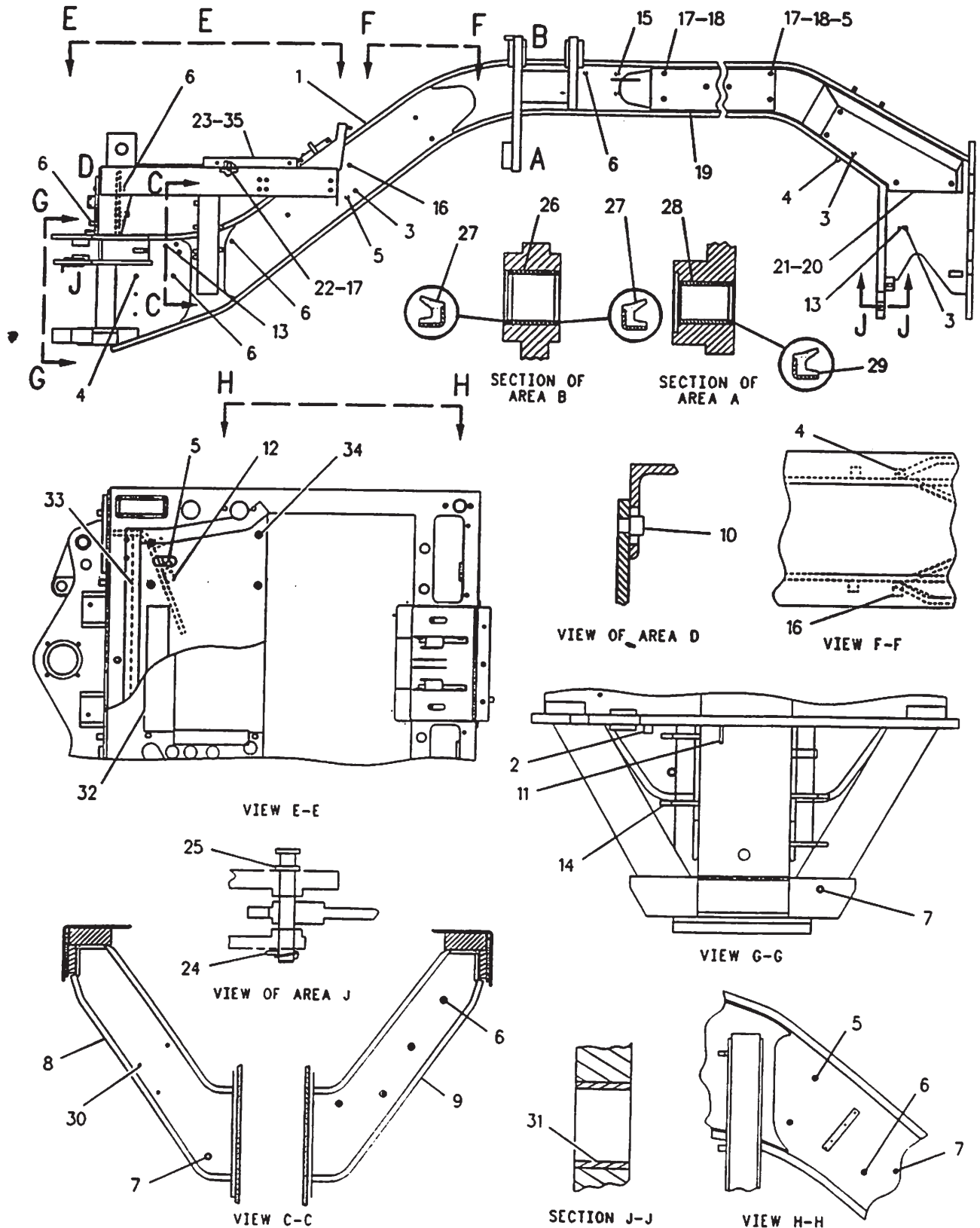
B-USE AS REQUIRED  
D-ORDER BY THE METER

691748 CP

7051

8W6249 FRAME GP-FRONT  
S/N 8MN1-499

# FRAME AND BODY





# FRAME AND BODY

NOTE	REF NO	PART NUMBER	QTY	PART NAME	NOTE	REF NO	PART NUMBER	QTY	PART NAME
	1	4L6454	47	BOLT (3/8-16X1.0IN)					
	2	5P1075	43	WASHER-HARD (3MM THK)					
	3	1357101	2	BRACKET					
	4	5P2424	2	BOLT (1/2-13X2.25IN)					
	5	6V8188	4	NUT (1/2-13 THD)					
	6	9V0344	2	PIN (LATCH STRIKER)					
	7	7I4982	2	HINGE AS					
	8	7I4983	4	PLATE AS (EACH INCLUDES)					
		9F2978	1	NUT-WELD (3/8-16 THD)					
	9	8N7837	8	PLATE AS (EACH INCLUDES)					
		9F2978	1	NUT-WELD (3/8-16 THD)					
	10	7I4979	2	HINGE AS					
	11	7I4981	2	HINGE AS					
	12	7I4959	4	PLATE					
	13	1118992	2	PLATE					
	14	5P2424	4	BOLT (1/2-13X2.25IN)					
	15	1340165	6	WASHER					
	16	8D3786	4	MOUNTING					
	17	8T8917	4	BOLT (1/2-13X1.25IN)					
	18	7X0550	6	WASHER-HARD					
	19	7I4985	2	PLATE					
	20	7I4977	1	PLATE					
	21	7I4960	2	HINGE AS					
	22	3V0613	4	BUMPER					
	23	3B4615	2	PIN-COTTER					
	24	3T5763	2	BUMPER					
	25	8T4224	2	WASHER-HARD (2MM THK)					
	26	6V8189	2	NUT (5/16-18 THD)					
	27	7I4965	1	BRACKET AS-LH					
	28	7I4963	1	BRACKET AS-RH					
	29	5P8502	2	PADLOCK GP (EACH INCLUDES)					
A		5P8500	1	KEY					
A		8Y6364	1	SLEEVE					
	30	9V0450	2	PIN					
	31	7P7975	2	LATCH					
	32	8G0873	2	SPRING					
	33	1S4244	2	PIN (9.40MM OD)					
	34	7X1387	2	WASHER (1.9MM THK)					
	35	7X0618	2	WASHER-HARD (5.0MM THK)					
B	36	5R4787	6	PLATE					
	37	8T2561	2	WASHER (5.0MM THK)					
	38	1357099	2	PLATE AS					

A-NOT PART OF THIS GROUP  
B-USE AS REQUIRED

661967 P

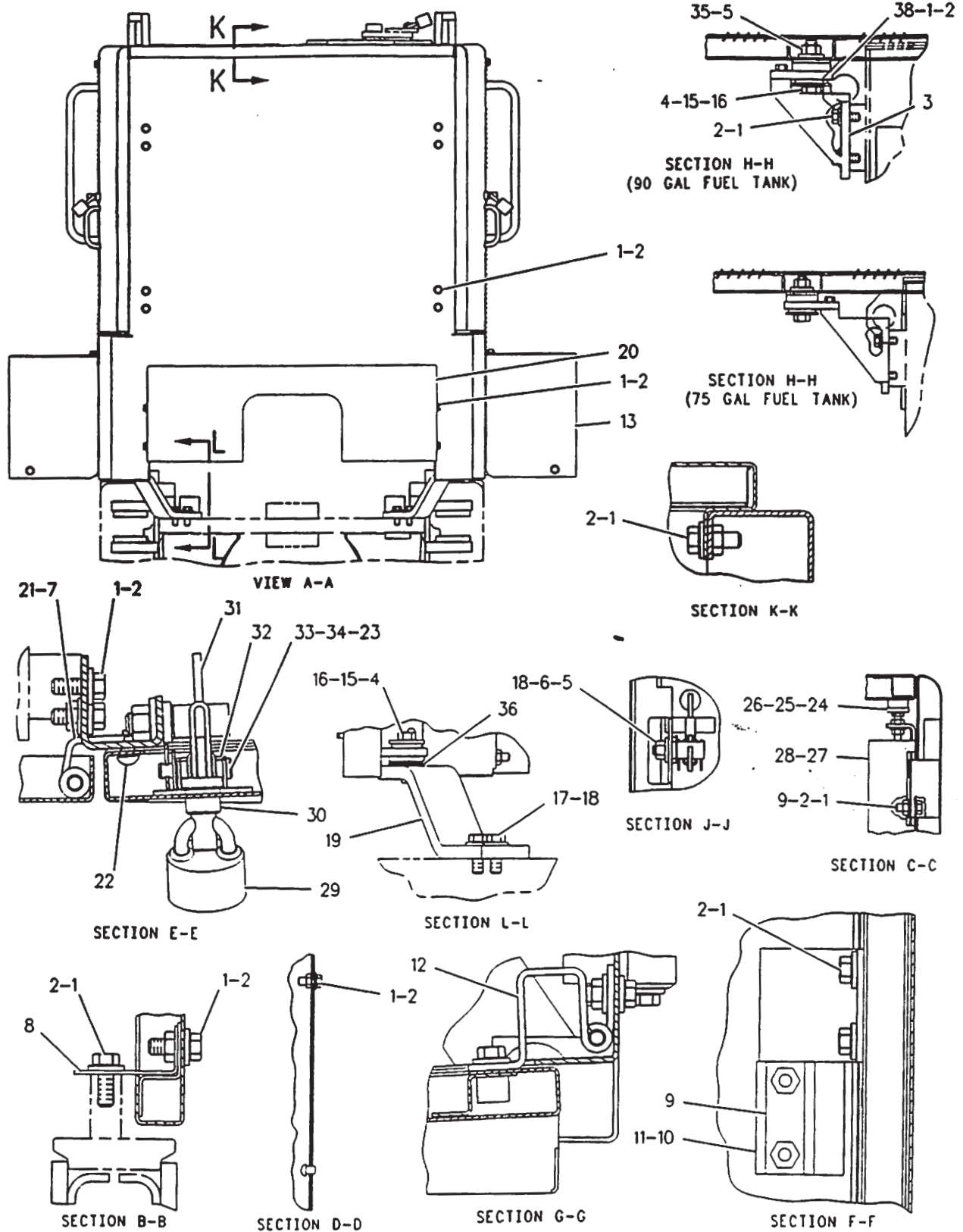
7263

1127494 ENCLOSURE GP-ENGINE-PART 2 OF 2

S/N 8MN1-459

Part of 1124112 Chassis As

# FRAME AND BODY



F-661966 P

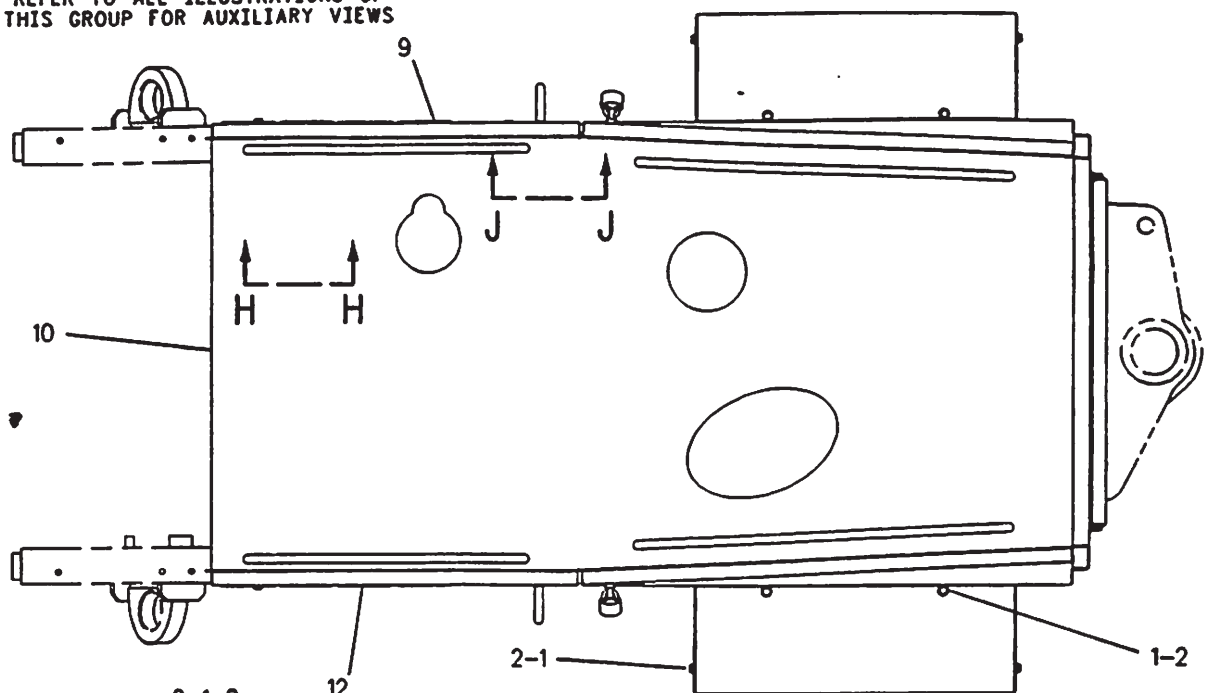
# FRAME AND BODY

NOTE	REF NO	PART NUMBER	QTY	PART NAME	NOTE	REF NO	PART NUMBER	QTY	PART NAME
	1	4L6454	30	BOLT (3/8-16X1.0IN)					
	2	5P1075	32	WASHER-HARD (3MM THK)					
	3	7I4973	1	DASH AS					
		9F2978	6	NUT-WELD (3/8-16 THD)					
		5V7003	12	BOSS-WELD (23.9MM LONG)					
		7I4983	1	PLATE AS					
		9F2978	1	NUT-WELD (3/8-16 THD)					
	4	7I4943	1	DOOR AS-RH					
		8G0871	1	HANDLE					
		9V0453	1	BUSHING-TERMINAL					
	5	7I4945	1	DOOR AS-LH					
		8G0871	1	HANDLE					
		9V0453	1	BUSHING-TERMINAL					
	6	7I4954	1	PLATE AS					
		9F2978	1	NUT-WELD (3/8-16 THD)					
	7	7I4957	1	PLATE AS					
		9F2978	1	NUT-WELD (3/8-16 THD)					
	8	1139517	2	HANDHOLD					
	9	7I4952	1	DOOR AS-LH					
		2M4009	2	PLUG-BUTTON					
		4B4274	9	WASHER (1.2MM THK)					
		7I4949	2	TUBE					
		9M5732	9	RIVET-POP (4.78MM DIA)					
	10	1161939	1	HOOD AS					
	11	7I4995	2	HANDHOLD					
	12	7I4948	1	DOOR AS-RH					
		2M4009	2	PLUG-BUTTON					
		4B4274	9	WASHER (1.2MM THK)					
		7I4949	2	TUBE					
		9M5732	9	RIVET-POP (4.78MM DIA)					
	13	8X5156	2	HANDHOLD					
	14	8X5155	2	PLATE					
	15	7X1387	4	WASHER (1.9MM THK)					
	16	6V8801	2	NUT (3/8-16 THD)					
	17	1138457	2	ROD					
	18	5P8439	2	GROMMET					
	19	3B4615	4	PIN-COTTER					

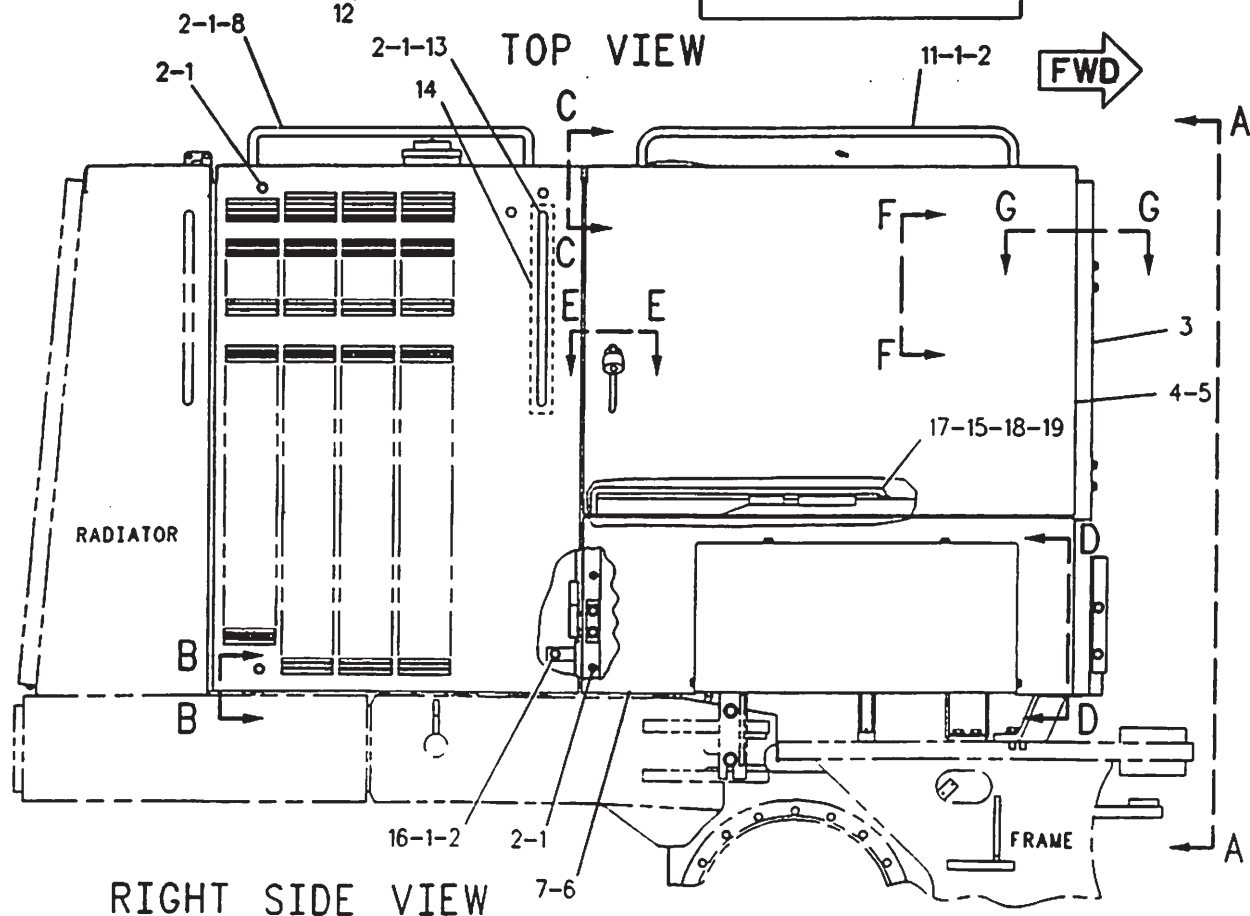
661989 P

# FRAME AND BODY

REFER TO ALL ILLUSTRATIONS OF  
THIS GROUP FOR AUXILIARY VIEWS



TOP VIEW



RIGHT SIDE VIEW

F-598472 CP

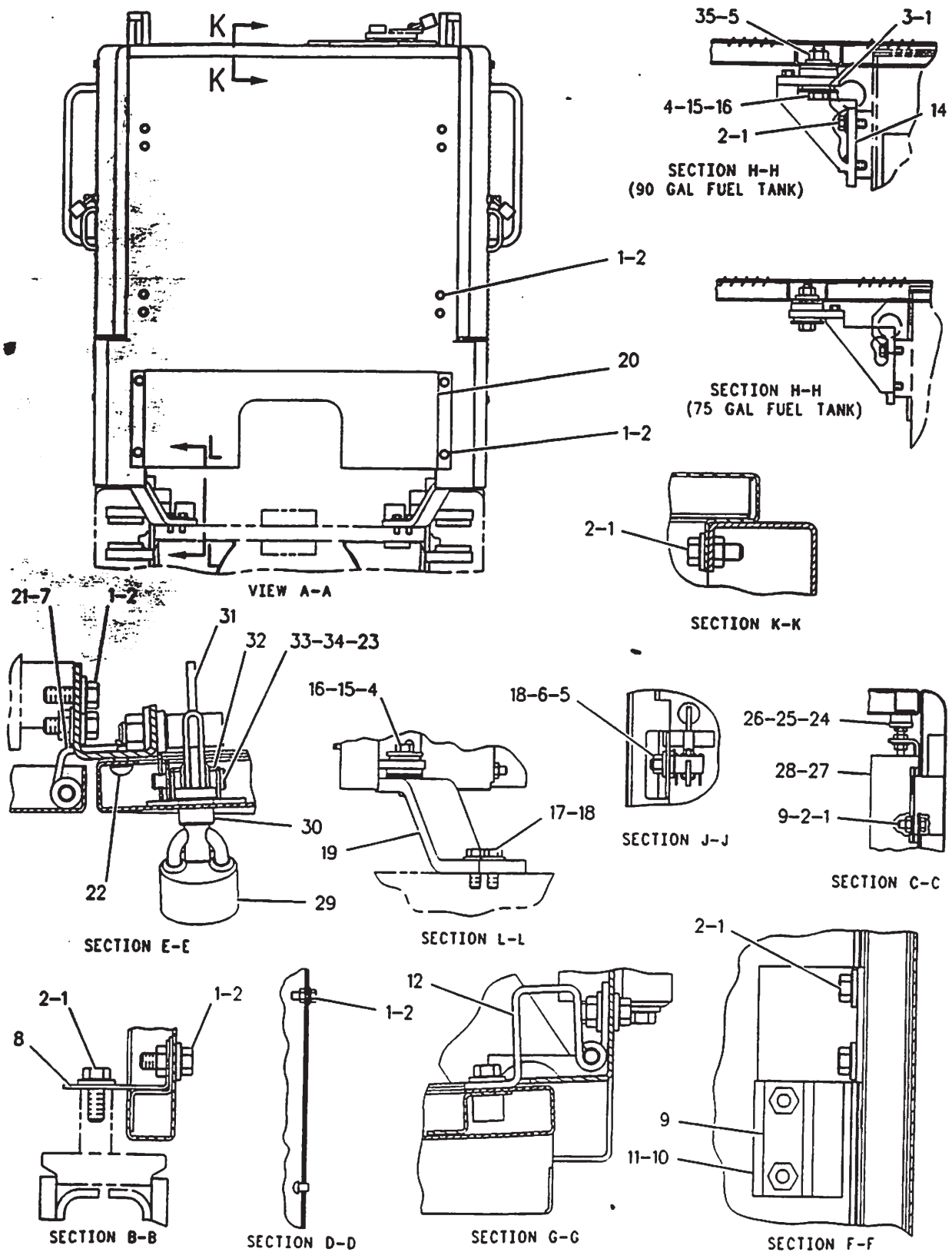
# FRAME AND BODY

NOTE	REF NO	PART NUMBER	QTY	PART NAME	NOTE	REF NO	PART NUMBER	QTY	PART NAME
	1	4L6454	47	BOLT (3/8-16X1IN)					
	2	5P1075	47	WASHER-HARD					
	3	1357099	2	PLATE AS					
				(EACH INCLUDES)					
		1F0750	1	NUT-WELD					
	4	5P2424	4	BOLT (1/2-13X2.25IN)					
	5	6V8188	4	NUT					
	6	9V0344	2	PIN (LATCH STRIKER)					
	7	7I4982	2	HINGE AS (LH)					
	8	7I4983	2	PLATE AS					
		9F2978	1	NUT-WELD					
	9	8N7837	8	PLATE AS					
		9F2978	1	NUT-WELD					
	10	7I4979	2	HINGE AS (RH)					
	11	7I4981	2	HINGE AS (LH)					
	12	7I4959	4	PLATE					
	13	7X0618	2	WASHER-HARD					
	14	1357101	2	BRACKET					
	15	1340165	6	WASHER					
	16	8D3786	4	MOUNTING					
	17	8T8917	4	BOLT (1/2-13X1.25IN)					
	18	7X0550	6	WASHER-HARD					
	19	7I4985	2	PLATE					
	20	1445725	1	PLATE					
	21	7I4960	2	HINGE AS (RH)					
	22	3V0613	4	BUMPER					
	23	3B4615	2	PIN-COTTER					
	24	3T5763	2	BUMPER					
	25	8T4224	2	WASHER-HARD					
	26	6V8189	2	NUT					
	27	7I4965	1	BRACKET AS-LH					
	28	7I4963	1	BRACKET AS-RH					
	29	5P8502	1	PADLOCK GP					
A		5P8500	1	KEY					
A		8Y6364	1	SLEEVE					
	30	9V0450	2	PIN					
	31	7P7975	2	LATCH					
	32	8G0873	2	SPRING					
	33	1S4244	2	PIN					
	34	7X1387	2	WASHER					

A-NOT PART OF THIS GROUP

700476 CP

# FRAME AND BODY



# FRAME AND BODY

NOTE	REF NO	PART NUMBER	QTY	PART NAME	NOTE	REF NO	PART NUMBER	QTY	PART NAME
	1	4L6454	22	BOLT					
	2	5P1075	20	WASHER-HARD					
	3	1445724	1	DASH AS					
		1F0750	9	NUT-WELD (3/8-16 THD)					
		5V7003	12	BOSS-WELD (23.9MM LONG)					
	4	7I4943	1	DOOR AS-RH					
		8G0871	1	HANDLE					
		9V0453	1	BUSHING-TERMINAL					
	5	7I4945	1	DOOR AS-LH					
		8G0871	1	HANDLE					
		9V0453	1	BUSHING-TERMINAL					
	6	1406131	1	PLATE AS (RH)					
		1F0750	5	NUT-WELD					
	7	1406133	1	PLATE AS (LH)					
		1F0750	5	NUT-WELD					
	8	1132536	1	COVER					
		9N1995	7	RIVET-POP					
	9	7I4952	1	DOOR AS-LH					
		2M4009	2	PLUG-BUTTON					
		4B4274	9	WASHER					
		7I4949	2	TUBE					
		9M5732	9	RIVET-POP					
	10	7I4968	1	HOOD AS					
	11	7I4995	2	HANDHOLD					
	12	7I4948	1	DOOR AS-RH					
		2M4009	2	PLUG-BUTTON					
		4B4274	9	WASHER					
		7I4949	2	TUBE					
		9M5732	9	RIVET-POP					
	13	8X5156	2	HANDHOLD					
	14	8X5155	2	PLATE					
	15	1139517	2	HANDHOLD					
	16	1138457	2	ROD					
	17	7X1387	4	WASHER					
	18	3B4615	4	PIN-COTTER					
	19	6V8801	2	NUT					
	20	5P8439	2	GROMMET					
	21	7I4983	2	PLATE AS					
	22	8T2561	4	WASHER					

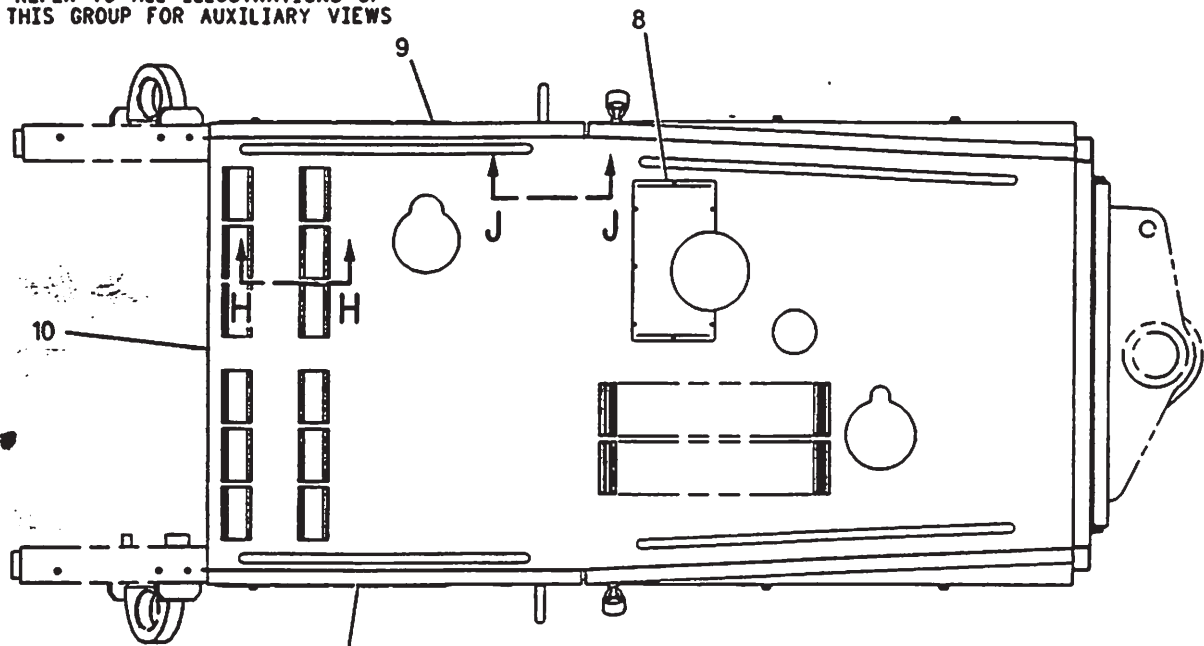
700474 CP

7263

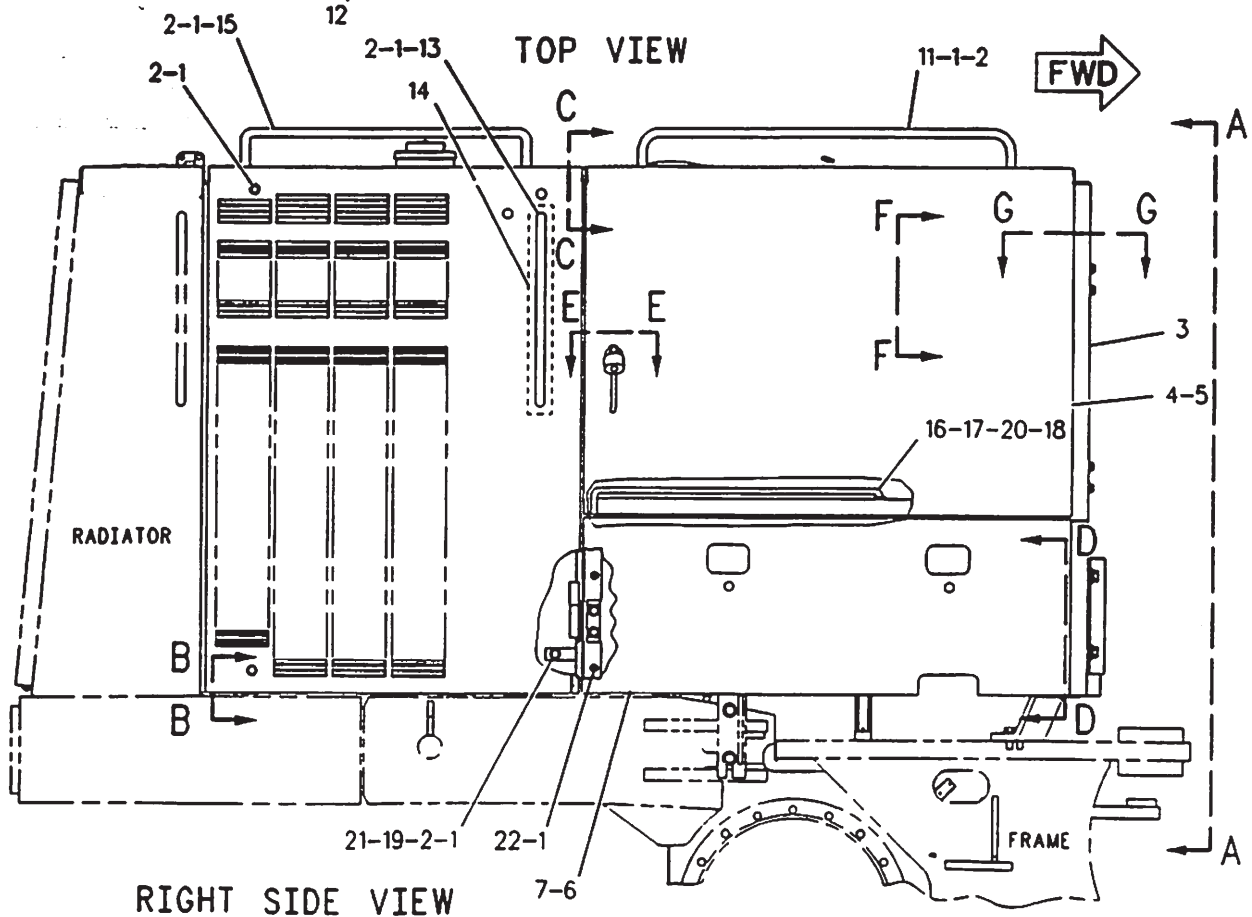
7I4942 ENCLOSURE GP-ENGINE-PART 1 OF 2  
S/N 8MN460-UD

# FRAME AND BODY

REFER TO ALL ILLUSTRATIONS OF  
THIS GROUP FOR AUXILIARY VIEWS



TOP VIEW

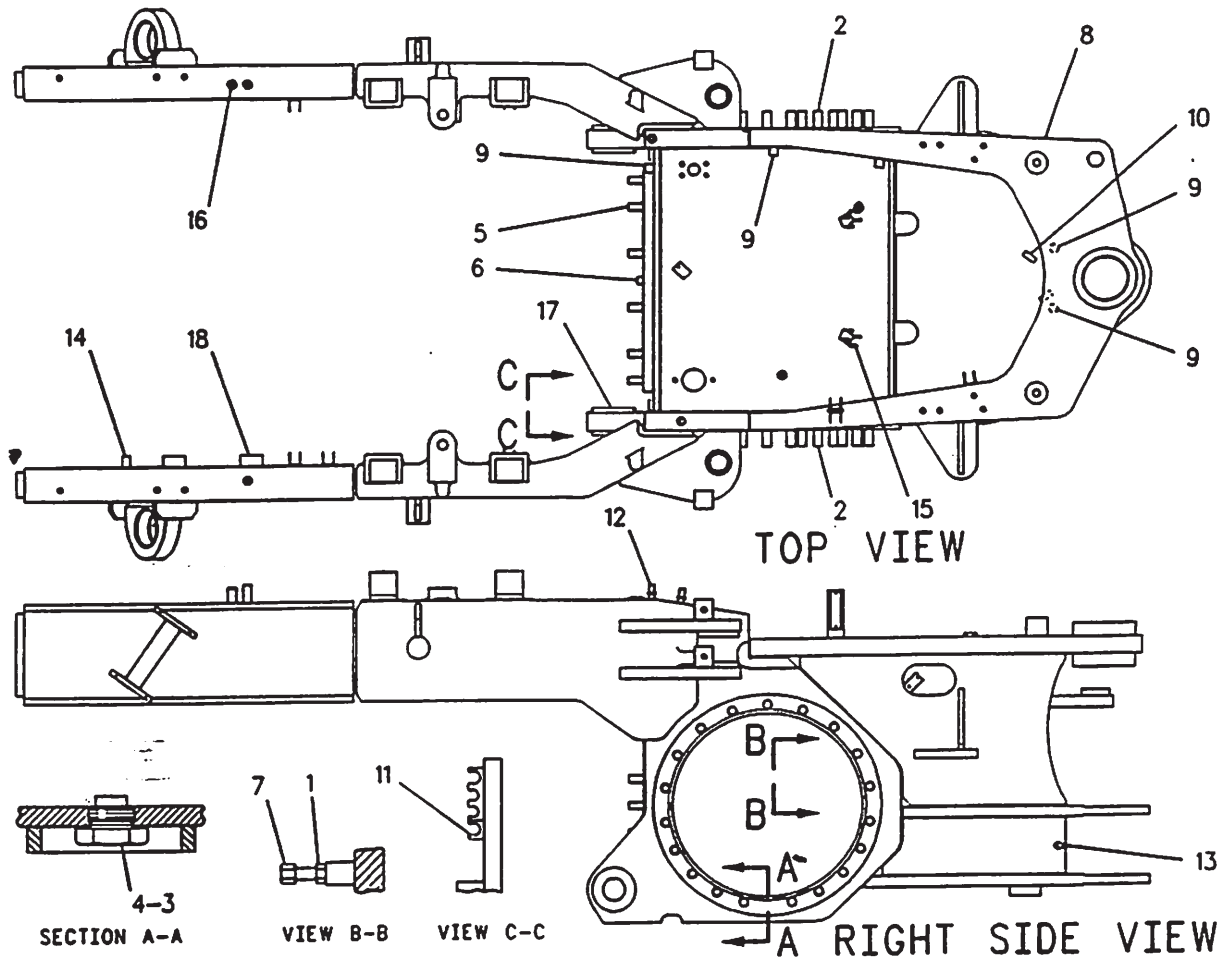


RIGHT SIDE VIEW

F-700473 CP



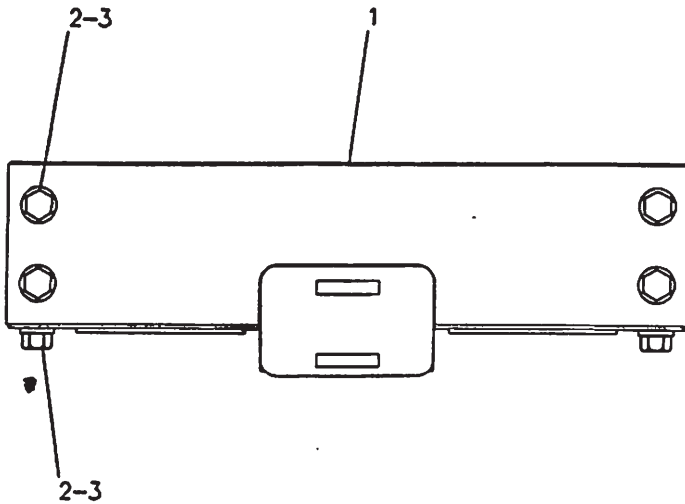
# FRAME AND BODY



NOTE	REF NO	PART NUMBER	QTY	PART NAME	NOTE	REF NO	PART NUMBER	QTY	PART NAME
	1	4K0367	1	NUT					
	2	2R1600	38	STUD-TAPERLOCK					
	3	2A3398	1	GASKET					
	4	8M3837	1	PLUG					
	5	2D8822	12	STUD-TAPERLOCK					
	6	4D8148	1	DOWEL					
	7	1O56491	1	BOLT-ADJUSTMENT					
	8	8W5501	1	CASE & FRAME AS					
	9	9G5742	5	BOSS					
	10	8D1059	2	BLOCK					
	11	3T0049	3	CLIP					
	12	9K3050	2	STUD-WELD					
	13	4K8479	1	STUD-WELD					
	14	8D3508	1	BOSS					
	15	9G9155	4	CLIP					
	16	4D6293	1	BOSS					
	17	2K3028	4	BOSS					
	18	9P5391	2	BLOCK					

F-569645 EP

# FRAME AND BODY



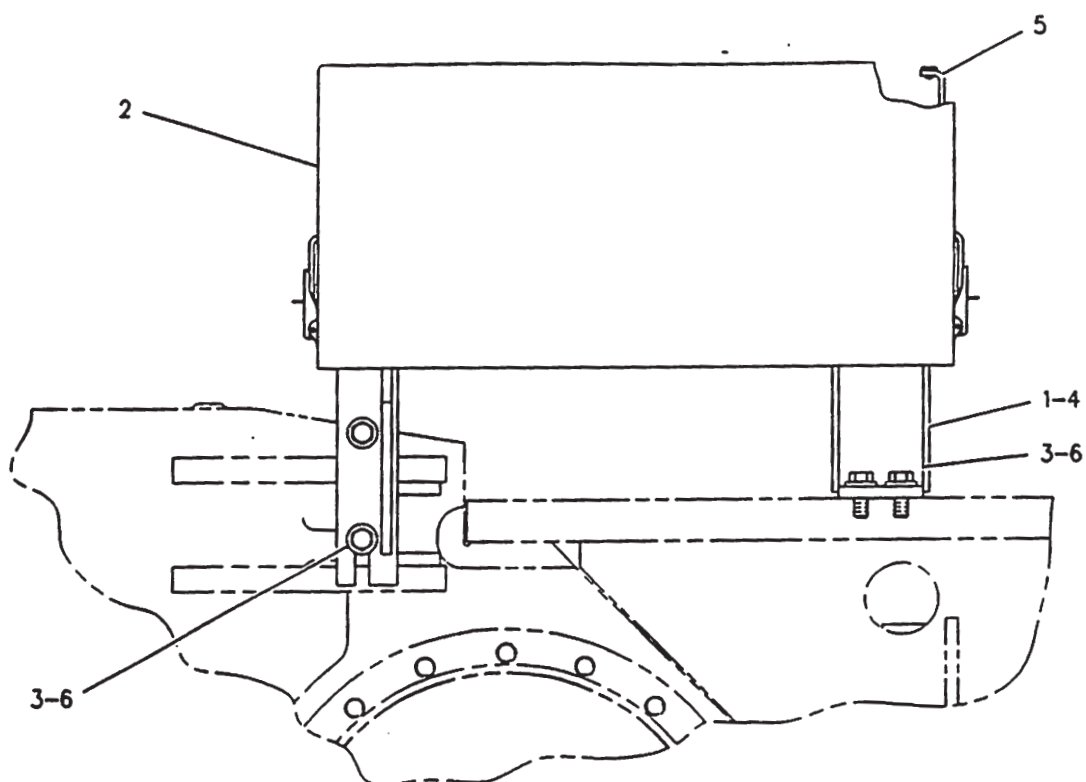
NOTE	REF NO	PART NUMBER	QTY	PART NAME
	1	715083	1	BUMPER AS
		9F2978	1	NUT-WELD
	2	7X0401	8	BOLT (1-8X1.75IN)
	3	8T5361	8	WASHER

F-628594 CP

7156

715116 BUMPER GP-REAR  
Part Of 1124112 Chassis Ar

# FRAME AND BODY



RIGHT SIDE VIEW

NOTE	REF NO	PART NUMBER	QTY	PART NAME	NOTE	REF NO	PART NUMBER	QTY	PART NAME
	1	1393225	1	SUPPORT AS-LH					
		1F0750	4	NUT-WELD					
		1F5339	2	LUG					
		1407720	2	LATCH AS					
2		1432097	2	COVER					
3		8C4436	8	BOLT					
4		1393226	1	SUPPORT AS-RH					
		1F0750	4	NUT-WELD					
		1F5339	2	LUG					
		1407720	2	LATCH AS					
5		1434792	8	BUMPER					
6		5P1076	8	WASHER-HARD					

F-687099 CP

# FRAME AND BODY

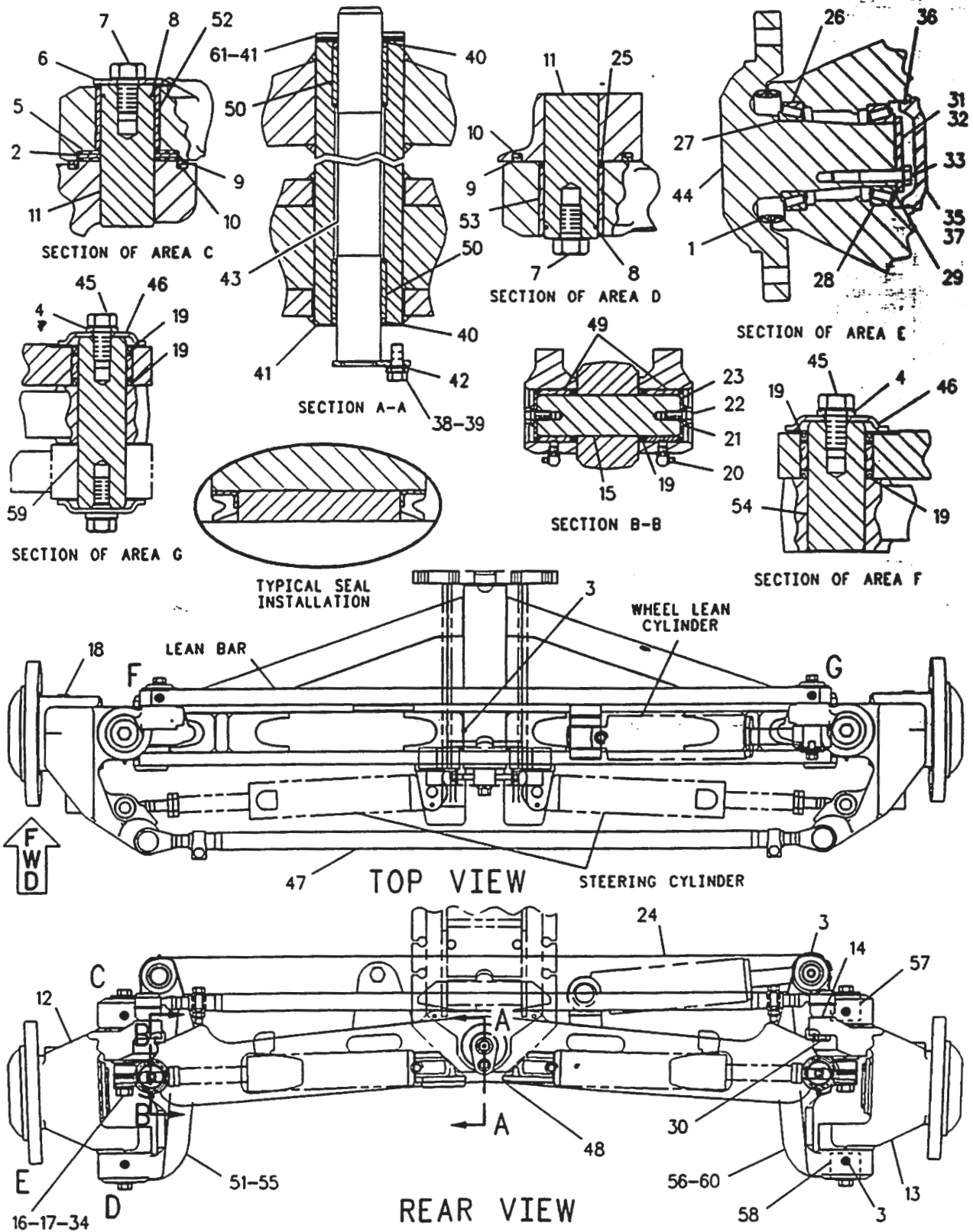
NOTE	REF NO	PART NUMBER	QTY	PART NAME	NOTE	REF NO	PART NUMBER	QTY	PART NAME
	1	9W6645	2	SEAL GP-DUO-CONE (EACH INCLUDES)		56	8X3435	1	ARM AS-LEANING
A		5K5129	2	RING-SEALING		57	2G7387	1	BEARING-SLEEVE
A		1U8698	1	INSTALLER AS-SEAL		58	2G7388	1	BEARING-SLEEVE
A		8T0533	1	GAUGE-SEAL HEIGHT		59	8W6497	1	PIN
		8T0540	1	TOOL-ADJUSTMENT		60	8X3437	1	ARM-FRONT AXLE
	2	2G8626	2	WASHER-THRUST		61	9D3523	1	WASHER
	3	388489	7	FITTING-GREASE					
	4	4D3704	2	WASHER-HARD					
	5	2G8615	4	WASHER-THRUST					
	6	2G8742	2	WASHER-HARD					
	7	2H3740	4	BOLT (3/4-16X1.25IN)					
	8	2G8741	4	RING-METAL SEAL					
	9	2G8777	4	SEAL (3.688IN ID)					
	10	9W2092	4	SEAL-O-RING (97.79MM ID)					
	11	8W5293	4	PIN					
	12	8W4652	1	HOUSING-SPINDLE					
	13	8W4653	1	HOUSING-SPINDLE					
	14	8D2811	2	WASHER					
	15	2G8633	2	PIN					
	16	1D4627	2	BOLT (7/8-9X3IN)					
	17	2J3505	2	NUT-FULL (7/8-9 THD)					
	18	7X7731	2	PLUG-PIPE (3/4-14 NPTF THD)					
	19	5P8842	8	SEAL-LIP (44.45MM ID)					
	20	388489	4	FITTING-GREASE					
	21	5P1075	4	WASHER-HARD (3MM THK)					
	22	5S7379	4	BOLT (3/8-16X.875IN)					
	23	2G8768	4	WASHER (3MM THK)					
	24	1039125	1	BAR AS-LEAN					
		2G8624	2	BEARING-SLEEVE					
	25	5P8890	2	SEAL-LIP (50.80MM ID)					
	26	300060	2	CUP-ROLLER BEARING					
	27	300061	2	CONE-ROLLER BEARING					
	28	7D8637	2	CUP-BEARING					
	29	7D8636	2	CONE-BEARING					
	30	384618	2	COTTER					
	31	7D8643	2	RETAINER					
B	32	2G3865	6	SHIM (.127MM THK)					
	33	OV0375	6	BOLT (1/2-13X3.25IN)					
	34	9D9797	2	LOCK					
	35	5T0906	2	COVER					
	36	2J8163	2	SEAL-O-RING (117.07MM ID)					
	37	5D0353	4	BOLT-LOCKING (3/8-16X1IN)					
	38	7B3235	1	BOLT (1/2-13X1.375IN)					
	39	7D1649	1	WASHER					
	40	5P8843	2	SEAL-LIP (50.8MM ID)					
B	41	2G5673	2	WASHER					
	42	9G5211	1	SPACER					
	43	1303595	1	PIN AS					
	44	8W8610	2	SPINDLE-FRONT AXLE					
	45	OS1592	2	BOLT (5/8-11X1.25IN)					
	46	2G5667	2	RETAINER					
Y	47	1313740	1	LINK GP-STEERING					
	48	1341081	1	AXLE AS-FRONT					
	49	2G8631	4	BEARING-SLEEVE					
	50	1314428	2	BEARING-SLEEVE					
		8W6466	2	END-AXLE					
		8W6469	1	BRACKET					
	51	8X3434	1	ARM AS-LEANING					
	52	2G7387	1	BEARING-SLEEVE					
	53	2G7388	1	BEARING-SLEEVE					
	54	8W6476	1	PIN					
	55	8X3436	1	ARM-FRONT AXLE					

A-NOT PART OF THIS GROUP  
B-USE AS REQUIRED  
Y-SEPARATE ILLUSTRATION

693983 CP

1341080 AXLE GP-FRONT  
S/N 8MN500-Up, 1313740-Page 231.01  
Part Of 1124112 Chassis As

# FRAME AND BODY



F-693982 CP

# FRAME AND BODY

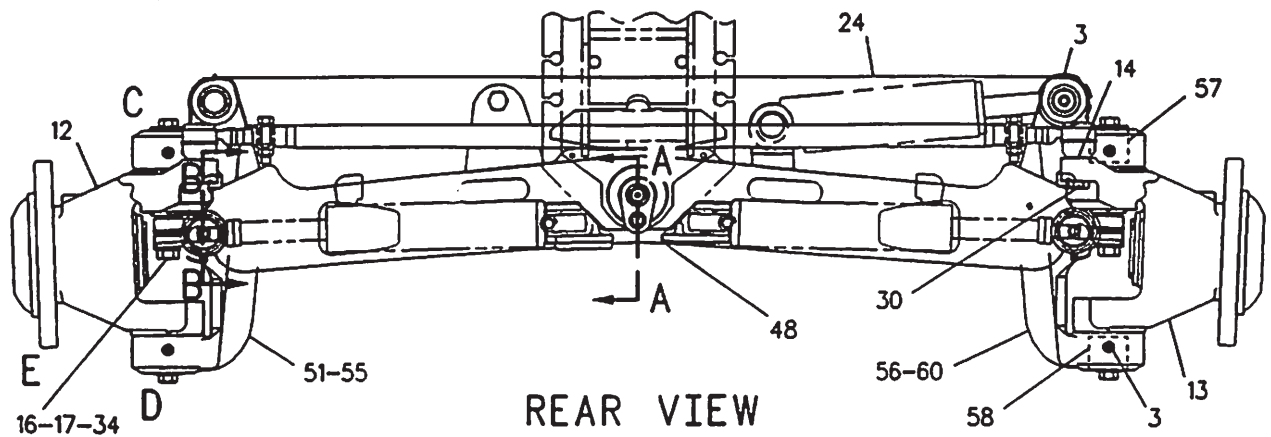
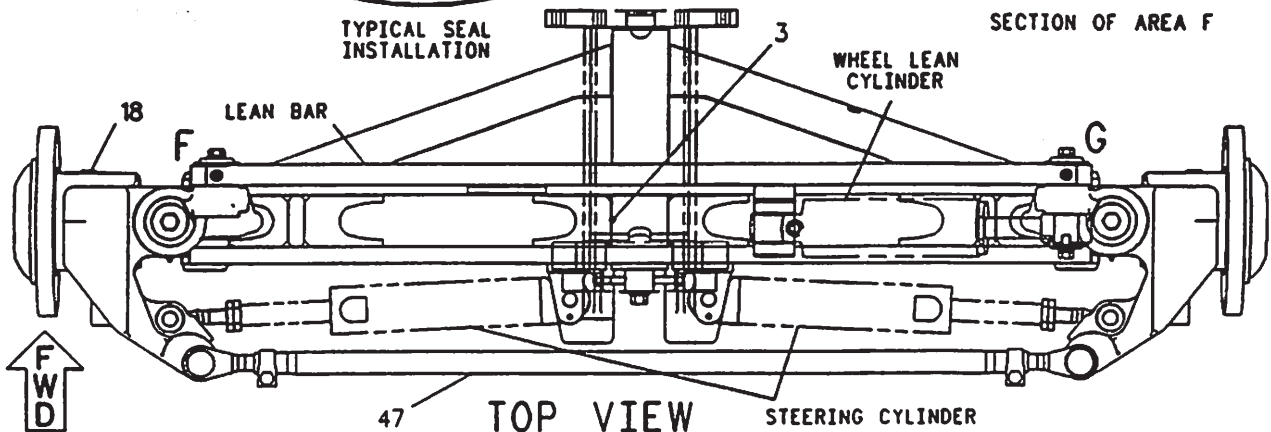
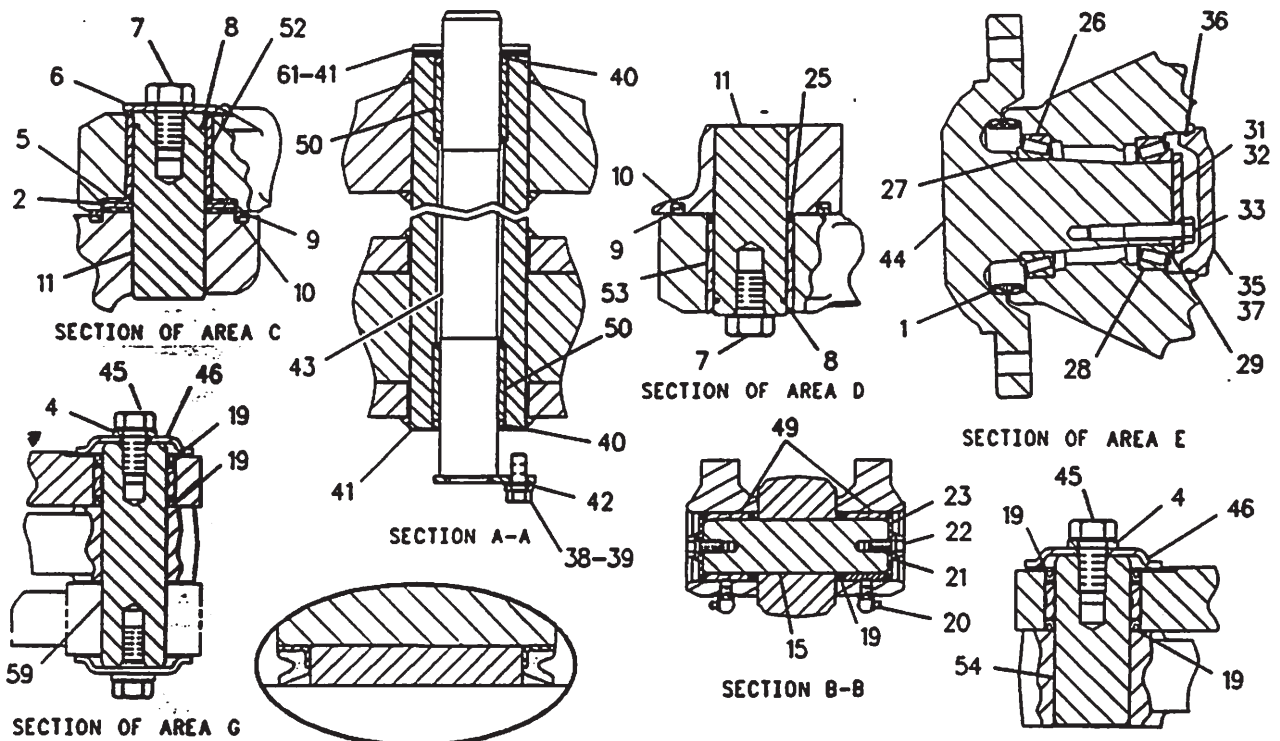
NOTE	REF NO	PART NUMBER	QTY	PART NAME	NOTE	REF NO	PART NUMBER	QTY	PART NAME
	1	9W6645	2	SEAL GP-DUO-CONE		56	8X3435	1	ARM AS-LEANING
				(EACH INCLUDES)		57	2G7387	1	BEARING-SLEEVE
A		5K5129	2	RING-SEALING		58	2G7388	1	BEARING-SLEEVE
A		1U8698	1	INSTALLER AS-SEAL		59	8W6497	1	PIN
A		8T0533	1	GAUGE-SEAL HEIGHT		60	8X3437	1	ARM-FRONT AXLE
		8T0540	1	TOOL-ADJUSTMENT		61	9D3523	1	WASHER
	2	2G8626	2	WASHER-THRUST					
	3	3B8489	7	FITTING-GREASE					
	4	4D3704	2	WASHER-HARD (5MM THK)					
	5	2G8615	4	WASHER-THRUST					
	6	2G8742	2	WASHER-HARD					
	7	2H3740	4	BOLT (3/4-16X1.25IN)					
	8	2G8741	4	RING-METAL SEAL					
	9	2G8777	4	SEAL					
	10	9M2092	4	SEAL-O-RING					
	11	8W5293	4	PIN					
	12	8W4652	1	HOUSING-SPINDLE					
	13	8W4653	1	HOUSING-SPINDLE					
	14	8D2811	2	WASHER					
	15	2G8633	2	PIN					
	16	104627	2	BOLT (7/8-9X3IN)					
	17	2J3505	2	NUT-FULL (7/8-9 THD)					
	18	7X7731	2	PLUG-PIPE					
				(3/4-14 NPTF THD)					
	19	5P8842	8	SEAL-LIP					
	20	3B8488	4	FITTING-HYDRAULIC					
	21	5P1075	4	WASHER-HARD (3MM THK)					
	22	5S7379	4	BOLT (3/8-16X.875IN)					
	23	2G8768	4	WASHER (3MM THK)					
	24	1039125	1	BAR AS-LEAN					
		2G8624	2	BEARING-SLEEVE					
	25	5P8890	2	SEAL-LIP					
	26	300060	2	CUP-ROLLER BEARING					
	27	300061	2	CONE-ROLLER BEARING					
	28	7D8637	2	CUP-BEARING					
	29	7D8636	2	CONE-BEARING					
	30	3B4618	2	COTTER					
	31	7D8643	2	RETAINER					
B	32	2G3865	6	SHIM (.127MM THK)					
	33	OV0375	6	BOLT (1/2-13X3.25IN)					
	34	9D9797	2	LOCK					
	35	5T0906	2	COVER					
	36	2J8163	2	SEAL-O-RING					
				(117.07MM ID)					
	37	5D0353	4	BOLT-LOCKING					
				(3/8-16X1IN)					
	38	7B3235	1	BOLT (1/2-13X1.375IN)					
	39	7D1649	1	WASHER					
	40	5P8843	2	SEAL-LIP					
B	41	2G5673	3	WASHER					
	42	9G5211	1	SPACER					
	43	1303595	1	PIN AS					
	44	8W2357	2	SPINDLE-FRONT AXLE					
	45	OS1592	2	BOLT (5/8-11X1.25IN)					
	46	2G5667	2	RETAINER					
Y	47	7D8912	1	LINK GP-STEERING					
	48	1018077	1	AXLE AS-FRONT					
	49	2G8631	4	BEARING-SLEEVE					
	50	8W6473	2	BEARING-SLEEVE					
	51	8X3434	1	ARM AS-LEANING					
	52	2G7387	1	BEARING-SLEEVE					
	53	2G7388	1	BEARING-SLEEVE					
	54	8W6476	1	PIN					
	55	8X3436	1	ARM-FRONT AXLE					

A-NOT PART OF THIS GROUP  
B-USE AS REQUIRED  
Y-SEPARATE ILLUSTRATION

649166 P



# FRAME AND BODY



F-623488 CP