

FUEL SYSTEM

217-0640 FILTER GP-FUEL

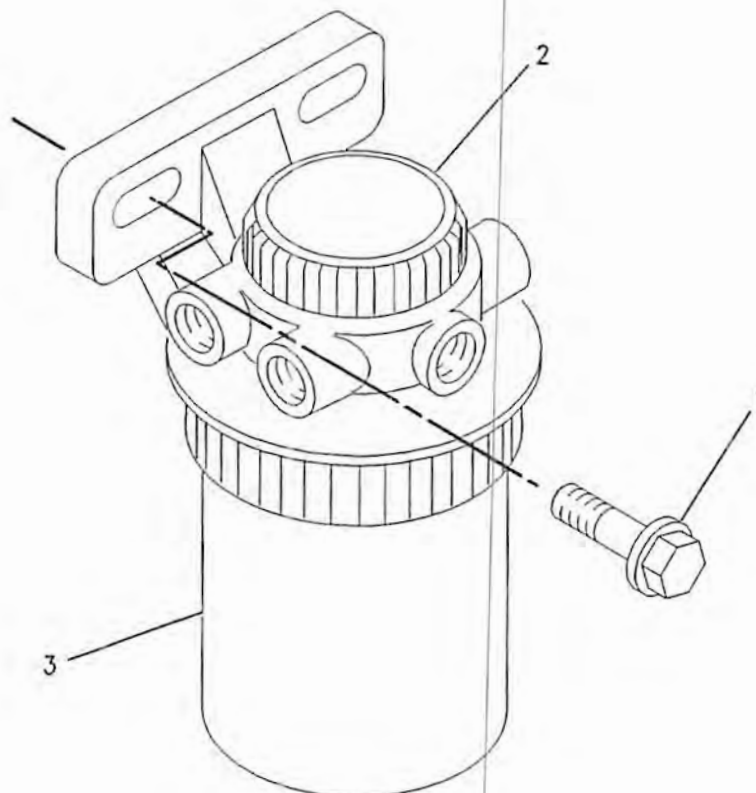
S/N: CPT1-UP

PART OF 206-2744 ENGINE AR-PRIMARY

SMCS-1261

i01725041

NOTE	REF NO	GRAPHIC REF	PART NUMBER	QTY	PART NAME						SEE PAGE
					1	2	3	4	5	6 (PRODUCT LEVEL)	
	1	1	6I-0593	2	BOLT (M10X1.5X30MM)						
	2	1	141-7844	1	FILTER ELEMENT AS-FUEL						
	3	1	145-4501	1	FILTER ELEMENT-FUEL						



GRAPHIC #1

g00889605

FUEL SYSTEM

184-1333 LINES GP-FUEL

S/N: RTA1-UP; RBB1-UP

PART OF 176-5181, 176-5201 CHASSIS AR

SMCS-1274

i01854684

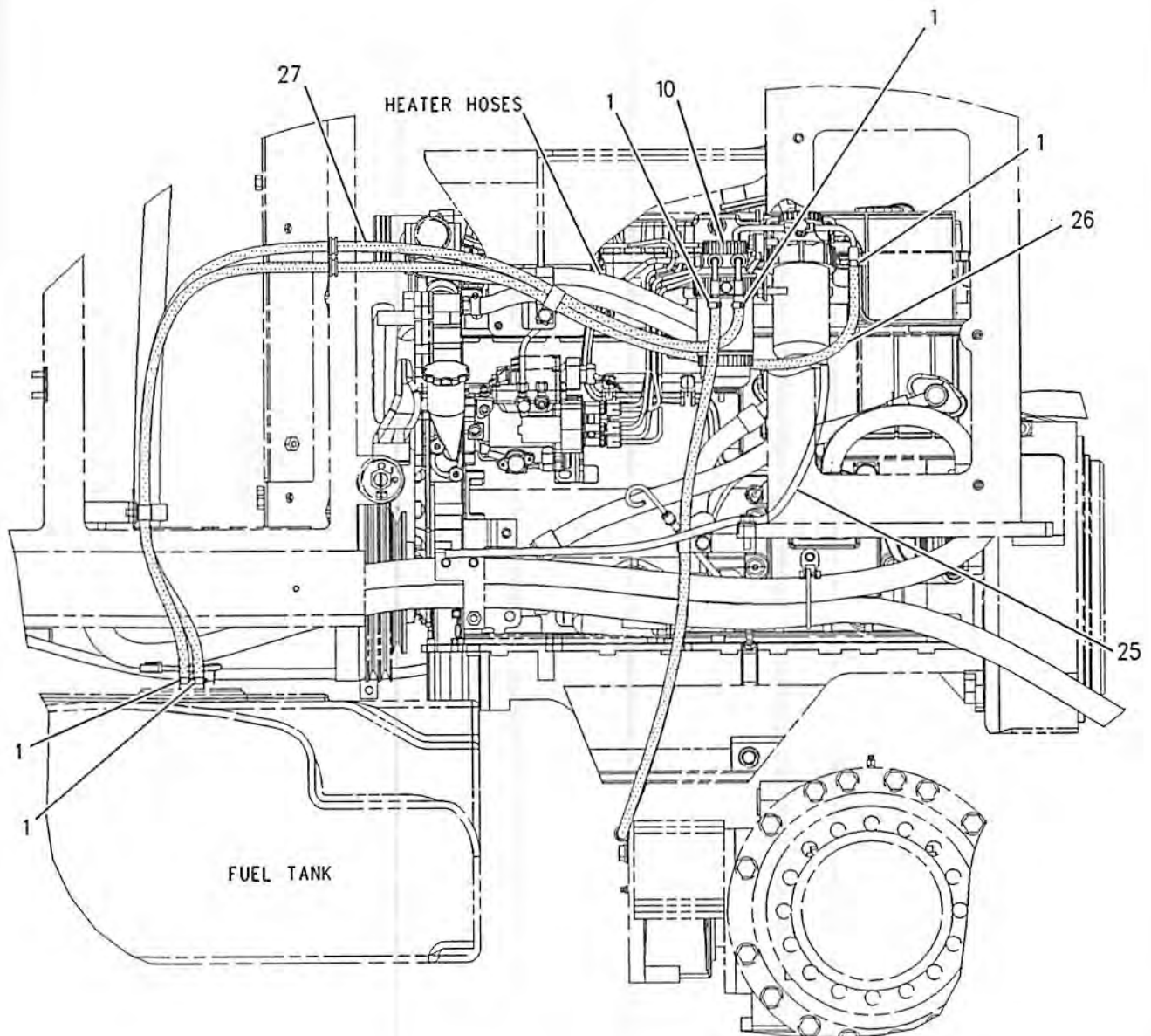
NOTE	REF NO	GRAPHIC REF	PART NUMBER	QTY	PART NAME						SEE PAGE
					1	2	3	4	5	6 (PRODUCT LEVEL)	
	1	1,3	1P-4278	6	CLAMP-HOSE						
	3	2	6G-2263	1	SPACER (10.5X19X28.5MM THK)						
	4	2	032-8100	2	WASHER (.064MM THK)						
	5	2	033-7849	2	PLUG						
	7	2	122-4873	1	BRACKET AS						
M		2	8T-3490	1	NUT-WELD (M10X1.5 THD)						
	8	2	152-0983	2	TUBE AS						
	9	2	220-1865	1	BRACKET AS						
M		2	8T-3490	1	NUT-WELD (M10X1.5 THD)						
Y	10	1	220-5557	1	SEPARATOR GP-WATER						89
	11	2	226-9424	2	GROMMET						
	12	2	4D-6466	2	CLIP						
	13	3	4K-8302	1	CLIP						
M	14	2	5C-7261	1	NUT (M8X1.25 THD)						
	15	2	5P-9085	2	CLIP						
	16	2,3	6D-3479	2	CLIP						
	17	2	7X-7729	3	WASHER (11X25X3MM THK)						
	18	2,3	8T-4121	4	WASHER-HARD (11X21X2.5MM THK)						
M	19	2	8T-4136	2	BOLT (M10X1.5X25MM)						
M	20	3	8T-4137	1	BOLT (M10X1.5X20MM)						
M	21	2	8T-4189	1	BOLT (M8X1.25X20MM)						
M	22	2	8T-4196	3	BOLT (M10X1.5X35MM)						
	23	2	8T-4224	2	WASHER-HARD (8.8X16X2MM THK)						
M	24	2	8T-6466	1	BOLT (M10X1.50X60MM)						
E	25	1	8C-3681		HOSE (80CM)						
E	26	1	5P-1420		HOSE (178CM)						
E	27	1	5P-1420		HOSE (160CM)						
E	28	3	5P-1420		HOSE (158CM)						
	29	2	122-0473	2	SPACER (6.5MM THK)						

E-ORDER BY THE CENTIMETER
M-METRIC PART
Y-SEPARATE ILLUSTRATION

FUEL SYSTEM

184-1333 LINES GP-FUEL (contd.)

i01854684



RIGHT SIDE VIEW

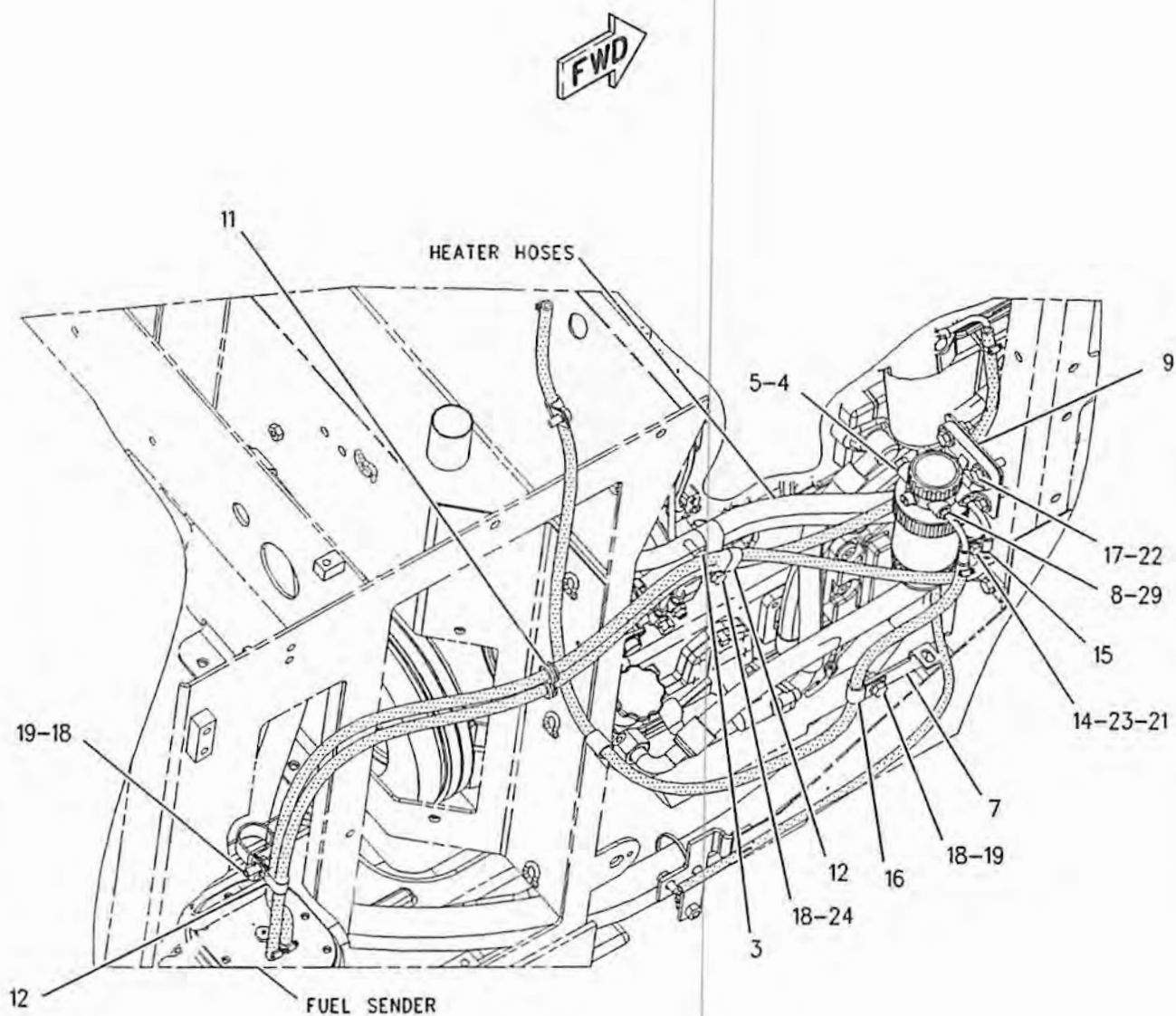
PHIC #1

g00920714

FUEL SYSTEM

184-1333 LINES GP-FUEL (contd.)

i01854684



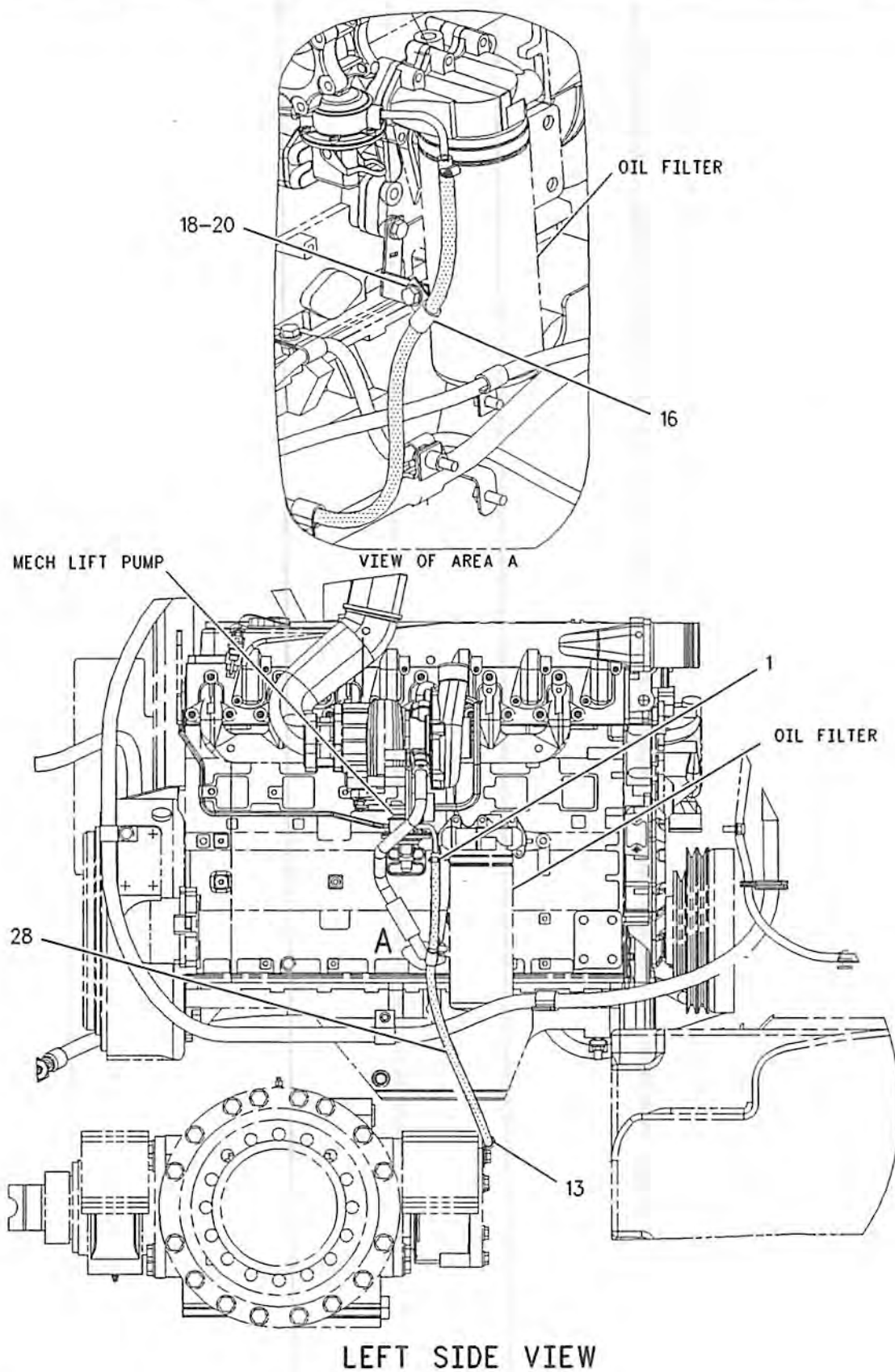
GRAPHIC #2

g00945716

FUEL SYSTEM

184-1333 LINES GP-FUEL (contd.)

i01854684



GRAPHIC #3

g00921089

FUEL SYSTEM

217-0109 PUMP GP-FUEL INJECTION

S/N: CPT1-UP

PART OF 206-2744 ENGINE AR-PRIMARY

SMCS-1251

i01831925

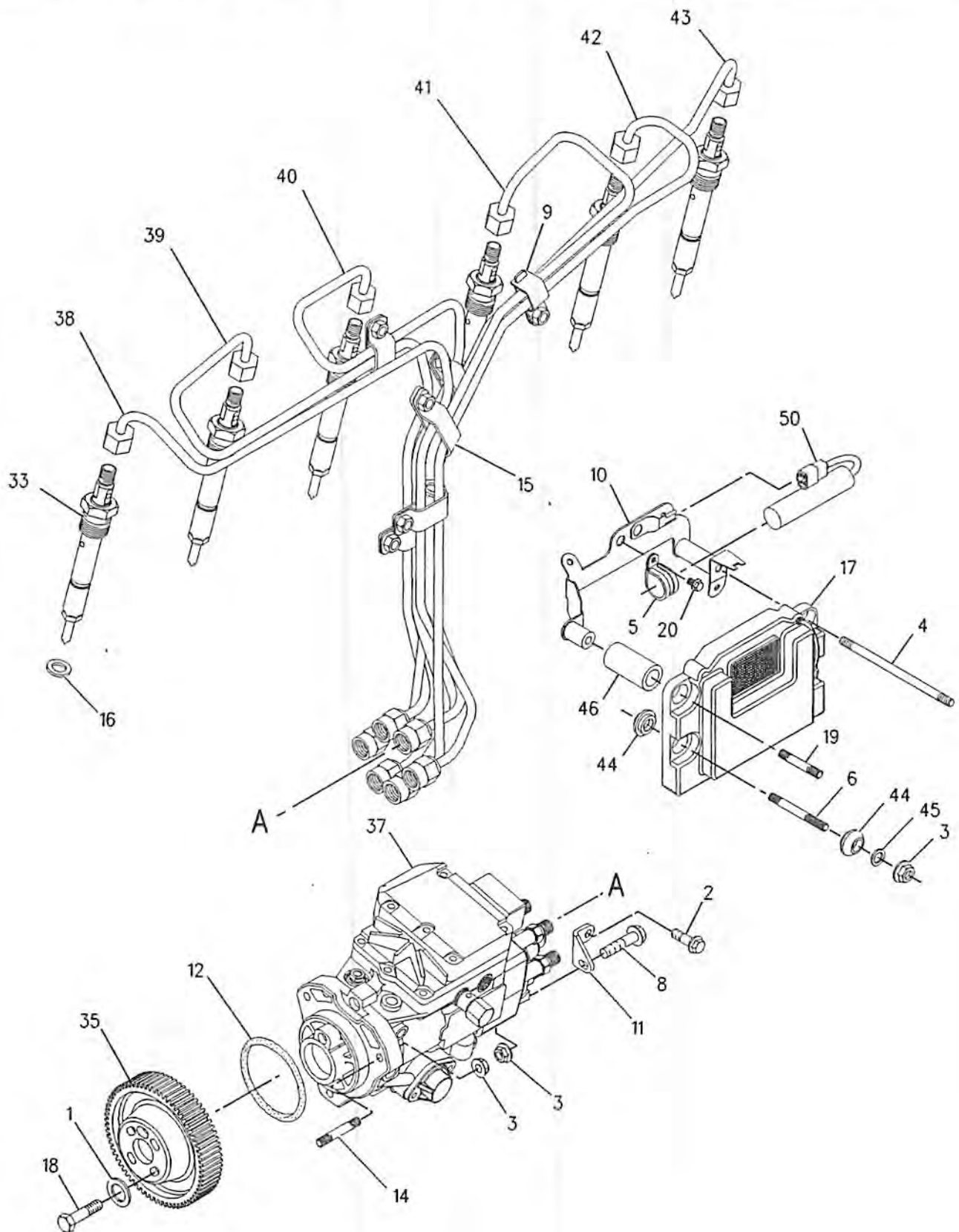
NOTE	REF NO	GRAPHIC REF	PART NUMBER	QTY	PART NAME						SEE PAGE
					1	2	3	4	5	6 (PRODUCT LEVEL)	
	1	1	4B-4277	1	WASHER (8.8X17.5X1.6MM THK)						
	2	1	6I-0217	1	BOLT (M8X1.25X20MM)						
	3	1	6I-0291	8	NUT (M8X1.25)						
	4	1	133-7668	1	STUD						
	5	1	228-8960	1	CLIP						
	6	1	228-8963	2	STUD						
	7	2	7M-7410	1	PLUG (3/8-18 NPTF)						
	8	1	100-4830	1	BOLT (M10X1.5X20MM)						
	9	1	124-3708	3	CLIP						
	10	1	228-8943	1	BRACKET						
	11	1	228-8956	1	BRACKET						
	12	1	145-8327	1	SEAL-O-RING						
	13	2	149-2091	1	SEAL-O-RING						
	14	1	101-3877	3	STUD						
	15	1	162-9992	3	CLIP						
	16	1	164-3207	6	WASHER						
	17	1	221-1018	1	CONTROL GP-ENGINE ELECTRONIC						
M	18	1	6V-5217	4	BOLT (M8X1.25X20MM)						
	19	1	141-8599	1	STUD						
	20	1,2	114-4363	3	BOLT (M8X1.25X12MM)						
	22	2	216-3448	1	SENSOR GP-PRESSURE (ENGINE OIL)						
	23	2	216-3436	1	SENSOR GP-TEMPERATURE (ENGINE COOLANT)						
	24	2	216-3436	1	SENSOR GP-TEMPERATURE (AIR INLET)						
	25	2	216-3446	1	SENSOR GP-SPEED (TIMING)						
	27	2	199-9252	1	SEAL-O-RING						
	28	2	199-9267	1	SEAL-O-RING						
	29	2	199-9751	2	SEAL-O-RING						
	30	2	216-3450	1	SENSOR GP-PRESSURE (BOOST)						
	33	1	216-9786	6	INJECTOR AS-FUEL						
	35	1	216-9790	1	GEAR (FUEL PUMP)						
	37	1	216-9824	1	PUMP GP-FUEL INJECTION						
	38	1	216-9826	1	TUBE AS (CYL NO.1)						
	39	1	216-9828	1	TUBE AS (CYL NO.2)						
	40	1	216-9830	1	TUBE AS (CYL NO.3)						
	41	1	216-9831	1	TUBE AS (CYL NO.4)						
	42	1	216-9834	1	TUBE AS (CYL NO.5)						
	43	1	216-9835	1	TUBE AS (CYL NO.6)						
	44	1	155-0576	8	MOUNT-ISOLATION						
	45	1	217-0099	7	SPACER						
	46	1	217-0100	4	SPACER						
	50	1	215-9430	4	CONTROL GP-VOLTAGE (24 VOLT) (LOAD PROTECTION)						
		1	1S-9593	2	STRAP-CABLE						
		1	7T-0093	4	PIN-CONNECTOR						
		1	177-9653	1	KIT-RECEPTACLE (4 PIN)						

M-METRIC PART

FUEL SYSTEM

217-0109 PUMP GP-FUEL INJECTION (contd.)

i01831925



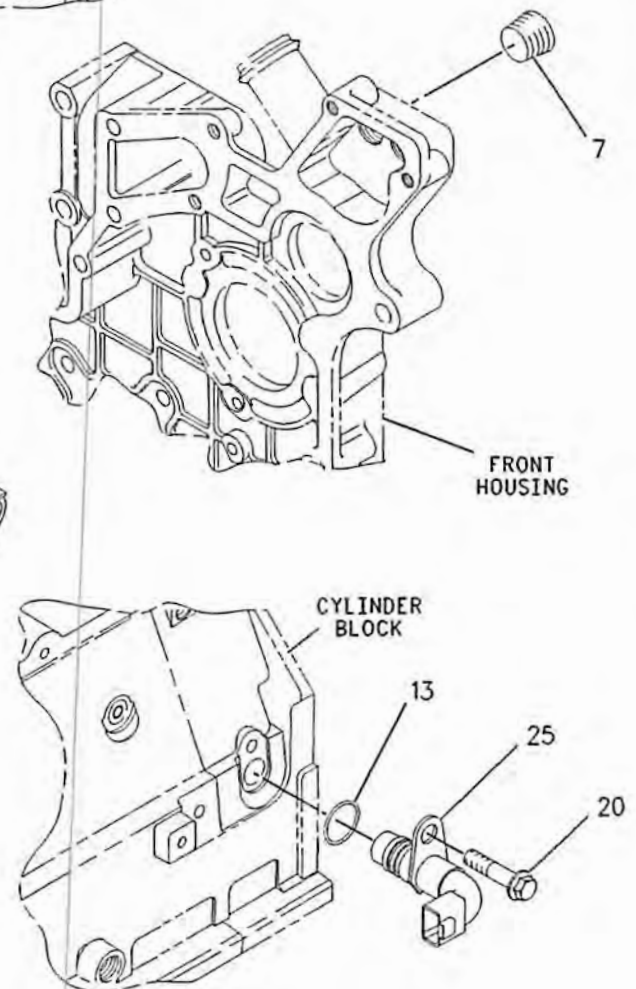
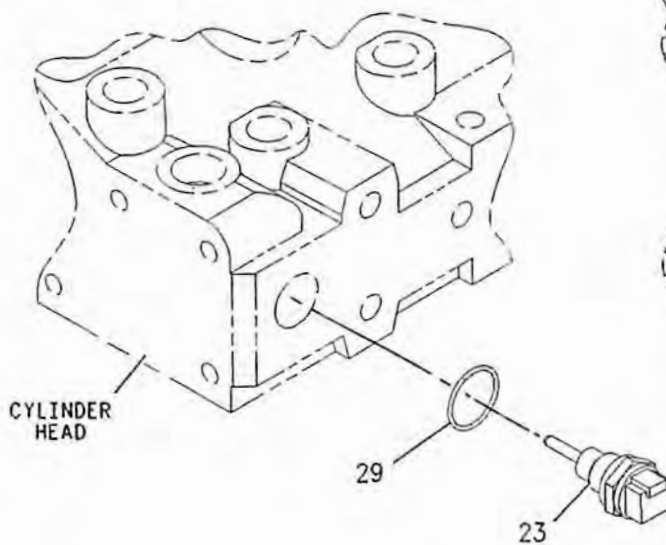
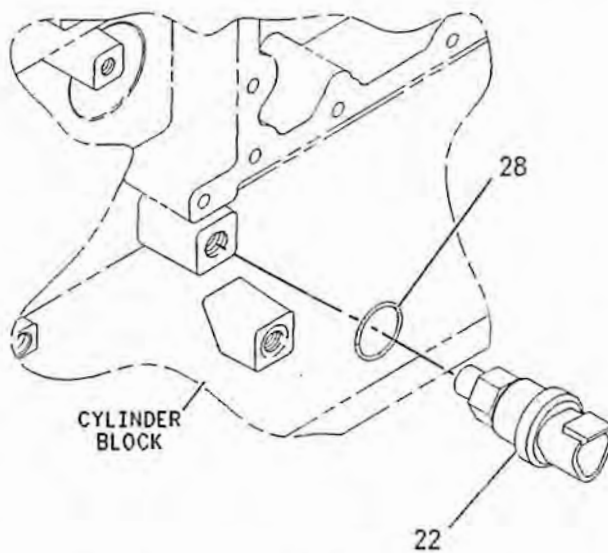
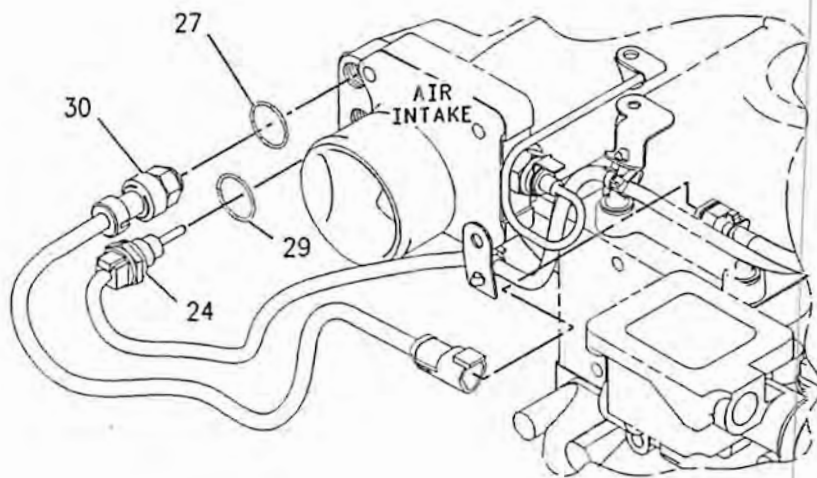
GRAPHIC #1

g00936420

FUEL SYSTEM

217-0109 PUMP GP-FUEL INJECTION (contd.)

i01831925



GRAPHIC #2

g00936421

FUEL SYSTEM

219-2455 PUMP GP-FUEL TRANSFER

S/N: CPT1-UP

PART OF 206-2744 ENGINE AR-PRIMARY

SMCS-1256

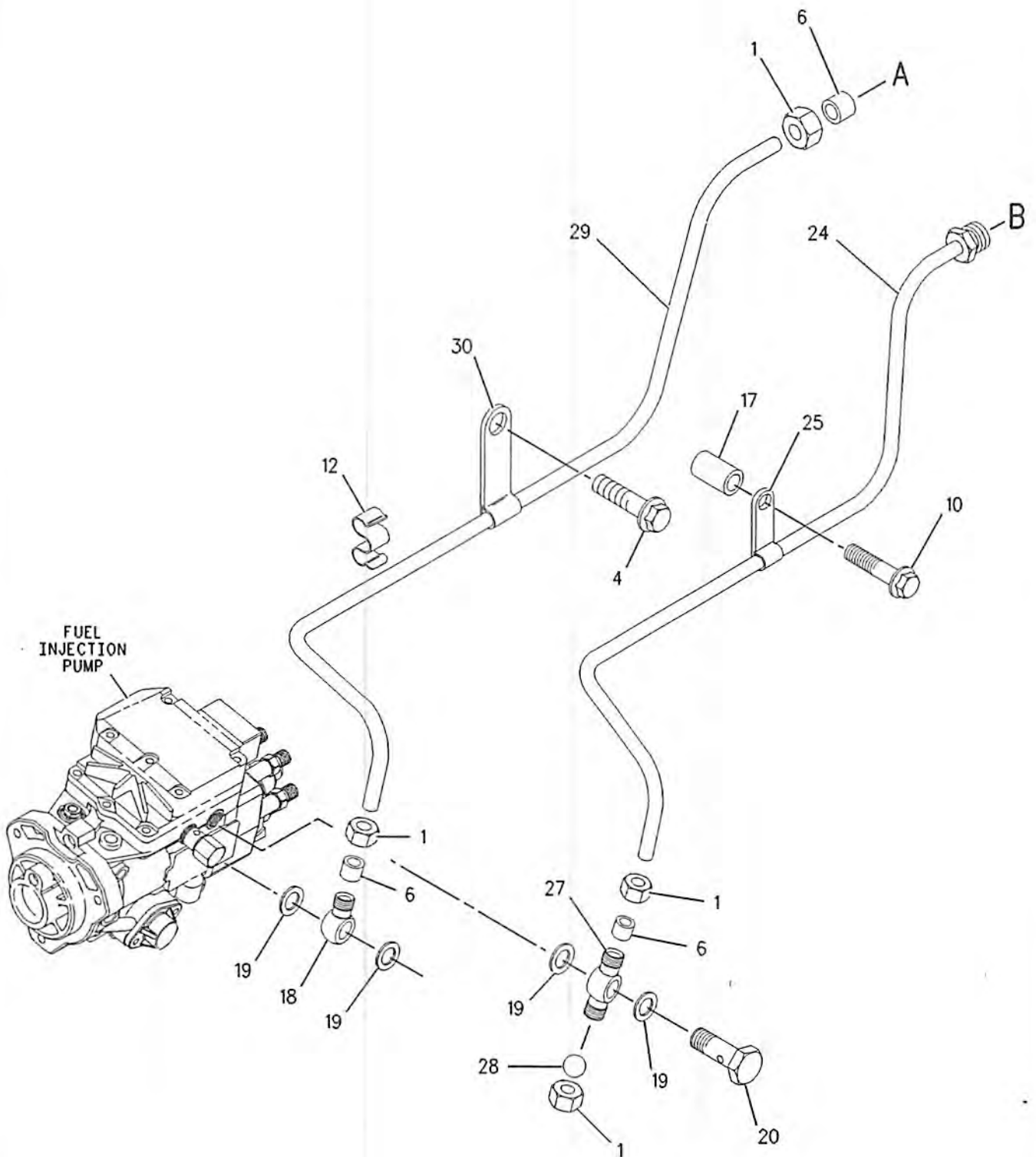
i01774001

NOTE	REF NO	GRAPHIC REF	PART NUMBER	QTY	PART NAME						SEE PAGE
					1	2	3	4	5	6 (PRODUCT LEVEL)	
	1	1	5C-1777	5	NUT						
	2	2	6I-0217	1	BOLT (M8X1.25X20MM)						
	3	2	6I-0254	4	BOLT (M8X1.25X30MM)						
	4	1	6I-1090	1	BOLT (M8X1.25X40MM)						
	5	2	033-7849	1	PLUG						
	6	1	067-6269	4	FITTING (5/16IN)						
	7	2	100-4830	3	BOLT (M10X1.5X20MM)						
	8	2	101-3906	1	BOLT						
	9	2	101-3907	2	WASHER						
	10	1	101-7178	1	BOLT (M10X55MM)						
	11	2	102-9988	1	SPACER						
	12	1	127-8162	1	CLIP						
	13	2	162-2000	1	WASHER						
	14	2	216-9043	1	PUMP AS-FUEL PRIMING						
	15	2	7W-4553	1	GASKET-FUEL PUMP						
	16	2	216-9053	1	CONNECTOR						
	17	1	216-9086	1	SPACER						
	18	1	216-9092	1	CONNECTOR						
	19	1	216-9752	4	WASHER						
	20	1	217-0721	1	BOLT						
	21	2	219-2442	1	TUBE AS						
	22	2	102-9986	1	CLIP						
	23	2	102-9987	1	CLIP						
	24	1	219-2443	1	TUBE AS						
	25	1	102-9986	1	CLIP						
	26	2	219-2450	1	BRACKET						
	27	1	219-2451	1	CONNECTION						
	28	1	219-2452	1	BALL						
	29	1	219-2453	1	TUBE AS						
	30	1	149-6117	1	CLIP						

FUEL SYSTEM

219-2455 PUMP GP-FUEL TRANSFER (contd.)

i01774001



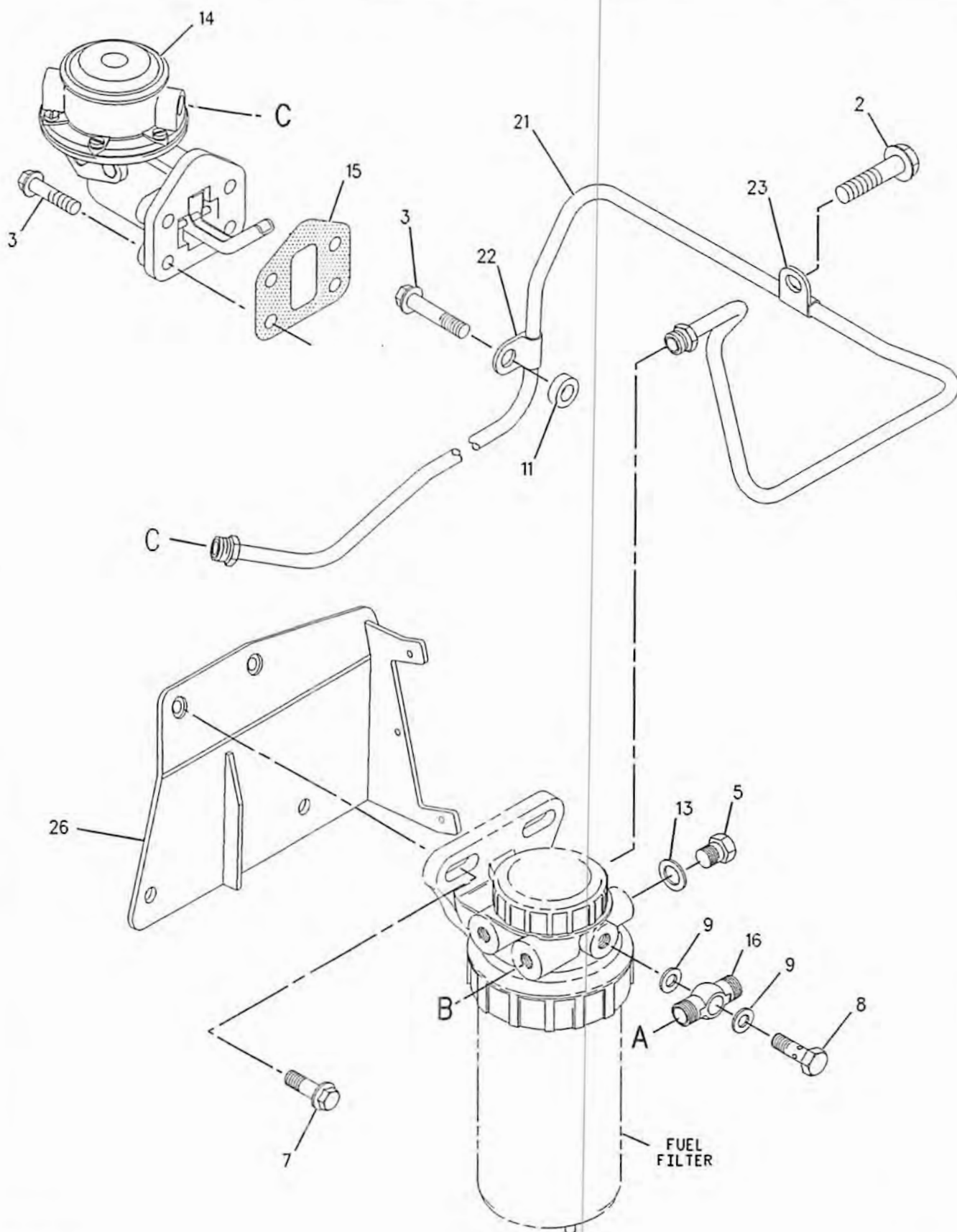
GRAPHIC #1

g00891374

FUEL SYSTEM

219-2455 PUMP GP - FUEL TRANSFER (contd.)

i01774001



GRAPHIC #2

g00891375

FUEL SYSTEM

220-5557 SEPARATOR GP-WATER

S/N: RTA1-UP; RBB1-UP

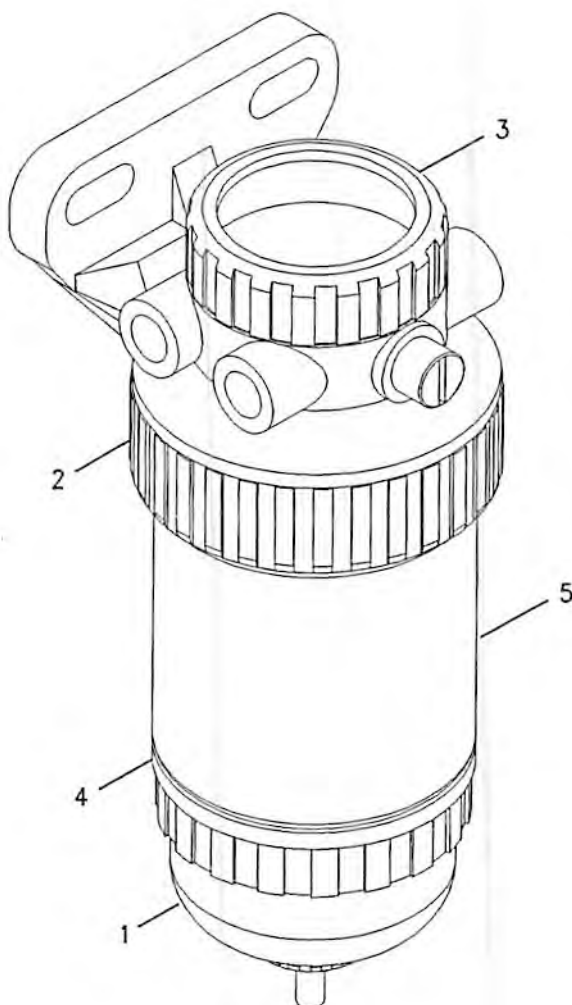
WITH BOWL

PART OF 184-1333 LINES GP-FUEL

SMCS-1263

i01813851

NOTE	REF NO	GRAPHIC REF	PART NUMBER	QTY	PART NAME						SEE PAGE
					1	2	3	4	5	6 (PRODUCT LEVEL)	
	1	1	112-9401	1	BOWL AS-WATER COLLECTION						
		1	128-8614	1	KIT-BOWL SEAL						
	2	1	118-8118	1	RING-RETAINING						
	3	1	118-8119	1	NUT						
	4	1	121-4480	1	KIT-WATER BASE (WATER SEPARATOR)						
					(INCLUDES NUT-CAP, CAP-HEADER, SEAL-CAP, PLUG-VOLUME, SEAL-O-RING, PLUG-VENT, SEAL-DUST & RING RETAINER)						
	5	1	131-1812	1	FILTER ELEMENT-WATER (SEPARATOR)						



GRAPHIC #1

g00916889

FUEL SYSTEM

202-0354 TANK & MTG GP-FUEL

S/N: RTA1-UP; RBB1-UP

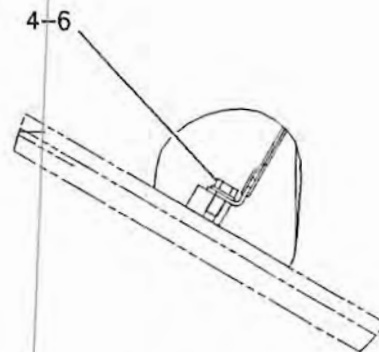
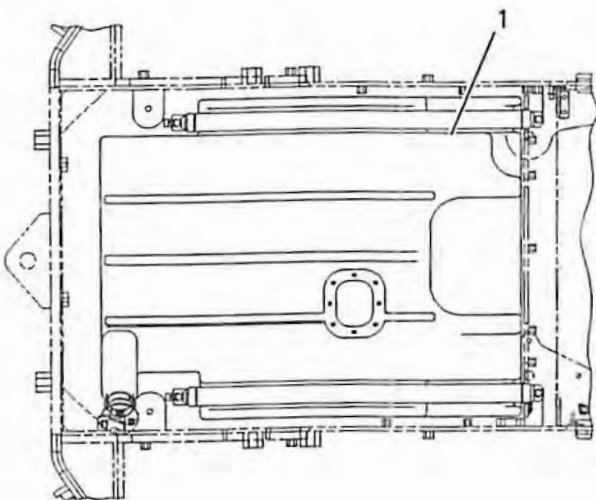
PART OF 176-5181, 176-5201 CHASSIS AR

SMCS-1273

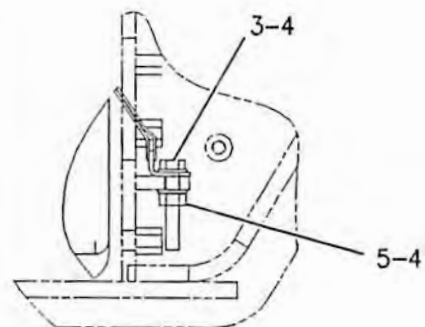
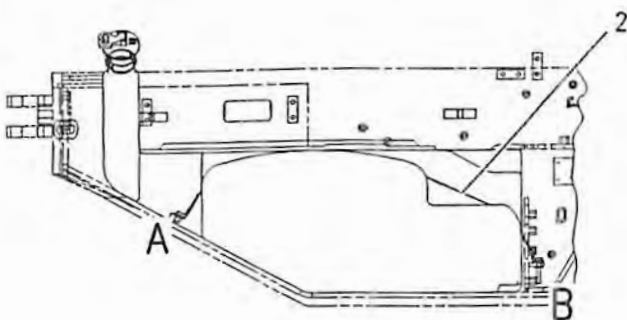
i0181420

NOTE	REF NO	GRAPHIC REF	PART NUMBER	QTY	PART NAME						SEE PAGE
					1	2	3	4	5	6 (PRODUCT LEVEL)	
	1	1	202-0355	1	TANK AS-FUEL						
		1	142-8828	1	CAP AS-FUEL						
		1	180-3730	1	FILTER AS-FUEL						
		1	206-4441	1	ADAPTER						
	2	1	202-0360	2	STRAP AS						
					(EACH INCLUDES)						
		1	202-0358	1	STRAP						
M	3	1	180-4686	2	BOLT-HEX HEAD						
	4	1	8T-4121	6	WASHER-HARD (11X21X2.5MM THK)						
M	5	1	8T-4133	2	NUT (M10X1.5 THD)						
M	6	1	8T-4137	2	BOLT (M10X1.5X20MM)						

M-METRIC PART



VIEW OF AREA A



VIEW OF AREA B

GRAPHIC #1

g0091546