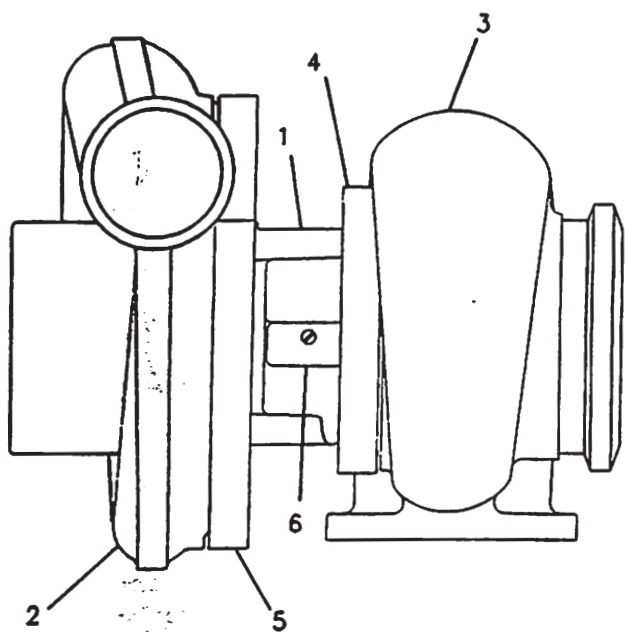


AIR INLET AND EXHAUST SYSTEM



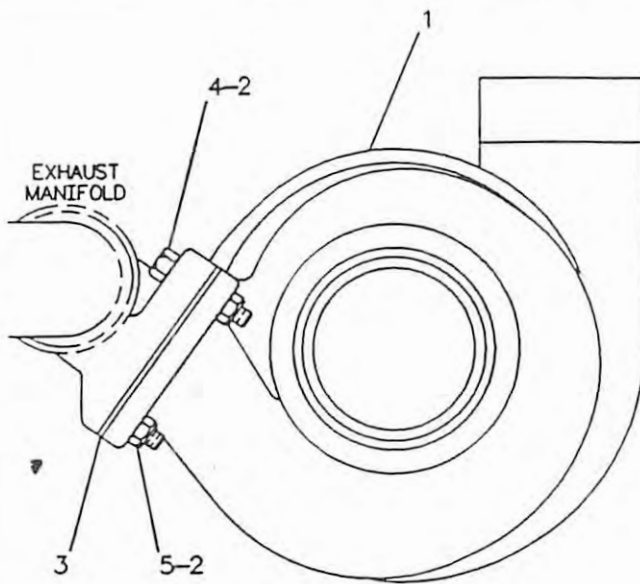
NOTE	REF NO	PART NUMBER	QTY	PART NAME
	1	1138315	1	CARTRIDGE
	2	1138317	1	GP-TURBOCHARGER
	3	1138316	1	COVER-COMPRESSOR
	4	709532	1	HOUSING-TURBINE
	5	7C9538	1	CLAMP AS
	6	1W4795	1	CLAMP AS-COMPRESSOR
		8H3710	1	PLATE-IDENTIFICATION
			1	SCREW-TAPPING

F-571098 EP

1052

1137919 TURBOCHARGER GP
Part Of 1135340 Turbocharger

AIR INLET AND EXHAUST SYSTEM

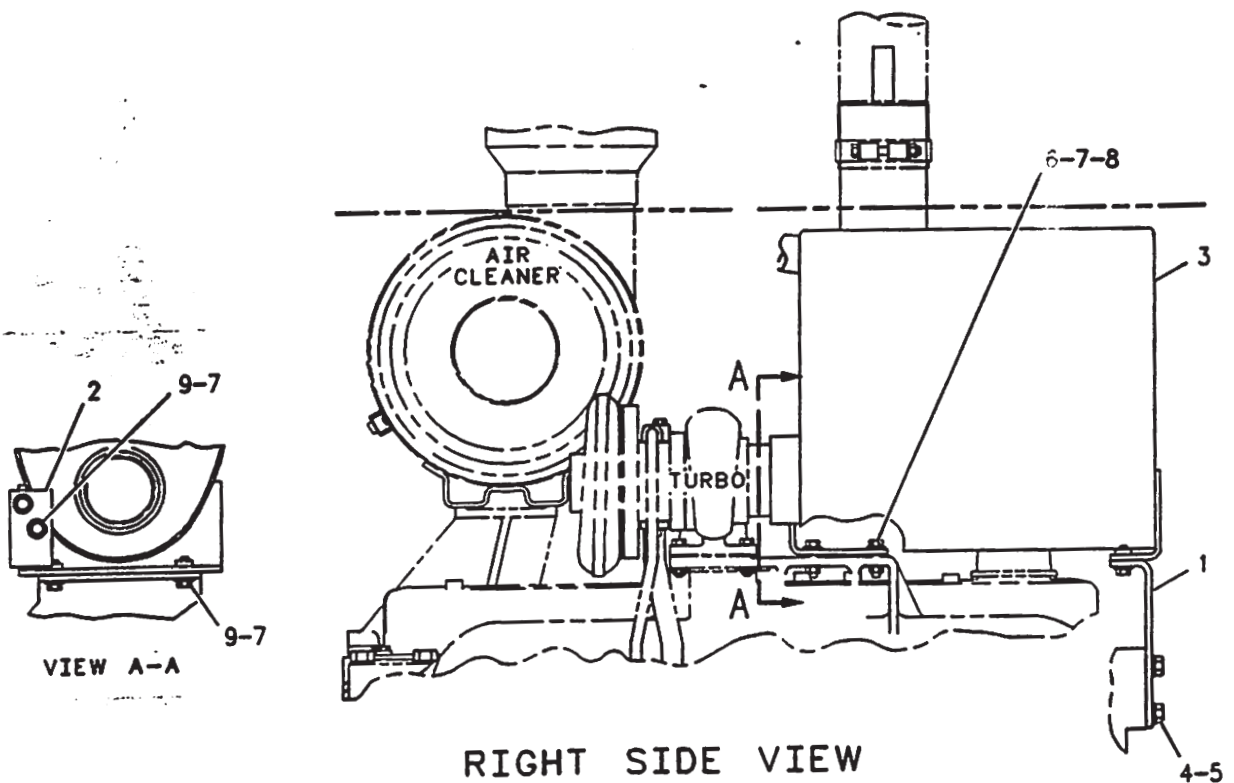


NOTE	REF NO	PART NUMBER	QTY	PART NAME
Y	1	1137919	1	TURBOCHARGER GP
	2	2N2766	4	LOCKNUT
	3	1P0451	1	GASKET-TURBOCHARGER
	4	9L2295	2	BOLT-HIGH TEMPERATURE (3/8-16X1 1/2)
-	5	7L6443	2	BOLT (3/8-16X2 1/4)
	BA	5P3931		COMPOUND-THREAD

A-NOT PART OF THIS GROUP
 B-USE AS REQUIRED
 Y-SEPARATE ILLUSTRATION

R-571121 EP

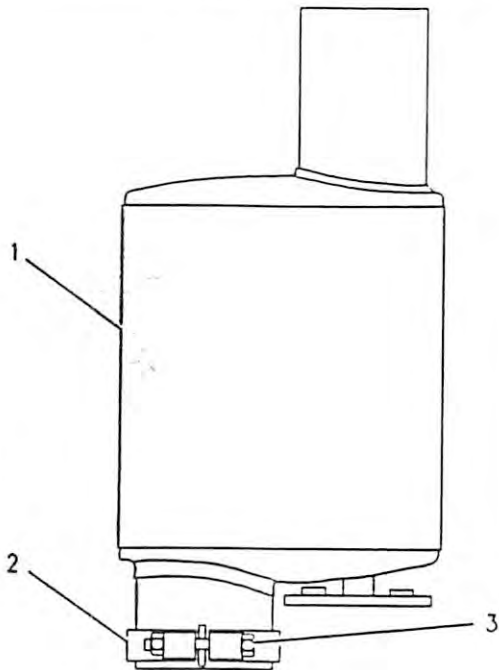
AIR INLET AND EXHAUST SYSTEM



NOTE	REF NO	PART NUMBER	QTY	PART NAME	NOTE	REF NO	PART NUMBER	QTY	PART NAME
	1	7C5134	1	SUPPORT					
	2	7E8454	1	BRACKET					
	3	1138510	1	MUFFLER AS					
	4	8T8917	2	BOLT (1/2-13X1.25IN)					
	5	8T4223	2	WASHER-HARD					
	6	4L9337	2	BOLT (3/8-16X1.5IN)					
	7	5P1075	6	WASHER-HARD					
	8	1B5355	2	NUT-FULL (3/8-16 THD)					
	9	8T2502	4	BOLT (3/8-16X1.125IN)					

F-641250

AIR INLET AND EXHAUST SYSTEM



NOTE	REF NO	PART NUMBER	QTY	PART NAME
	1	1270308	1	MUFFLER AS
	2	7N1087	1	CLAMP
	3	OS 1619	1	BOLT
		1B5355	1	NUT-FULL
		5M2894	2	WASHER

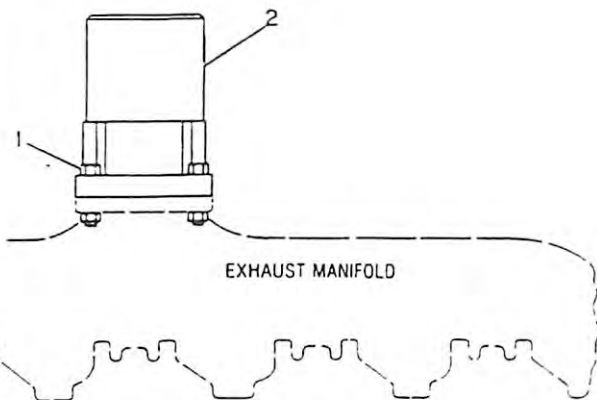
B-632375 CP

1062

1274930 MUFFLER GP

S/N 8MN1-459

Part Of 1162891 Installation Ar-Engine



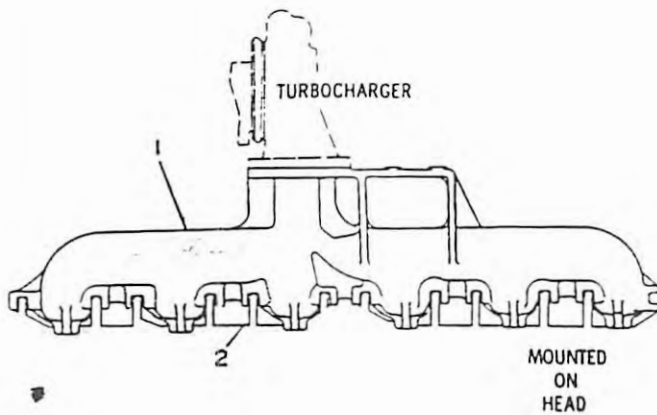
NOTE	REF NO	PART NUMBER	QTY	PART NAME
	1	OS 1571	4	BOLT
		1B5355	4	NUT-FULL
	2	2W9094	1	ADAPTER-EXHAUST

B-315600 EP

1061

2W9093 PIPE GP-EXHAUST

AIR INLET AND EXHAUST SYSTEM



NOTE	REF NO	PART NUMBER	QTY	PART NAME
	1	7N3486	1	MANIFOLD-EXHAUST
C	2	9Y1979	3	GASKET-MANIFOLD
-				
-				

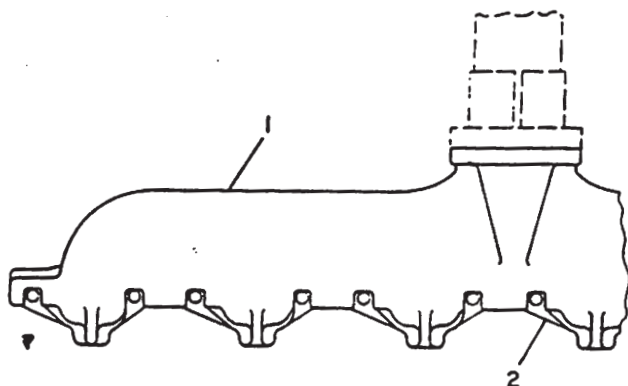
C-CHANGE FROM PREVIOUS TYPE

R-469883 EP

1059

6N0164 MANIFOLD GP-EXHAUST

AIR INLET AND EXHAUST SYSTEM



NOTE	REF NO	PART NUMBER	QTY	PART NAME
C	1	952355	1	MANIFOLD-EXHAUST
	2	1W7964	6	GASKET-MANIFOLD

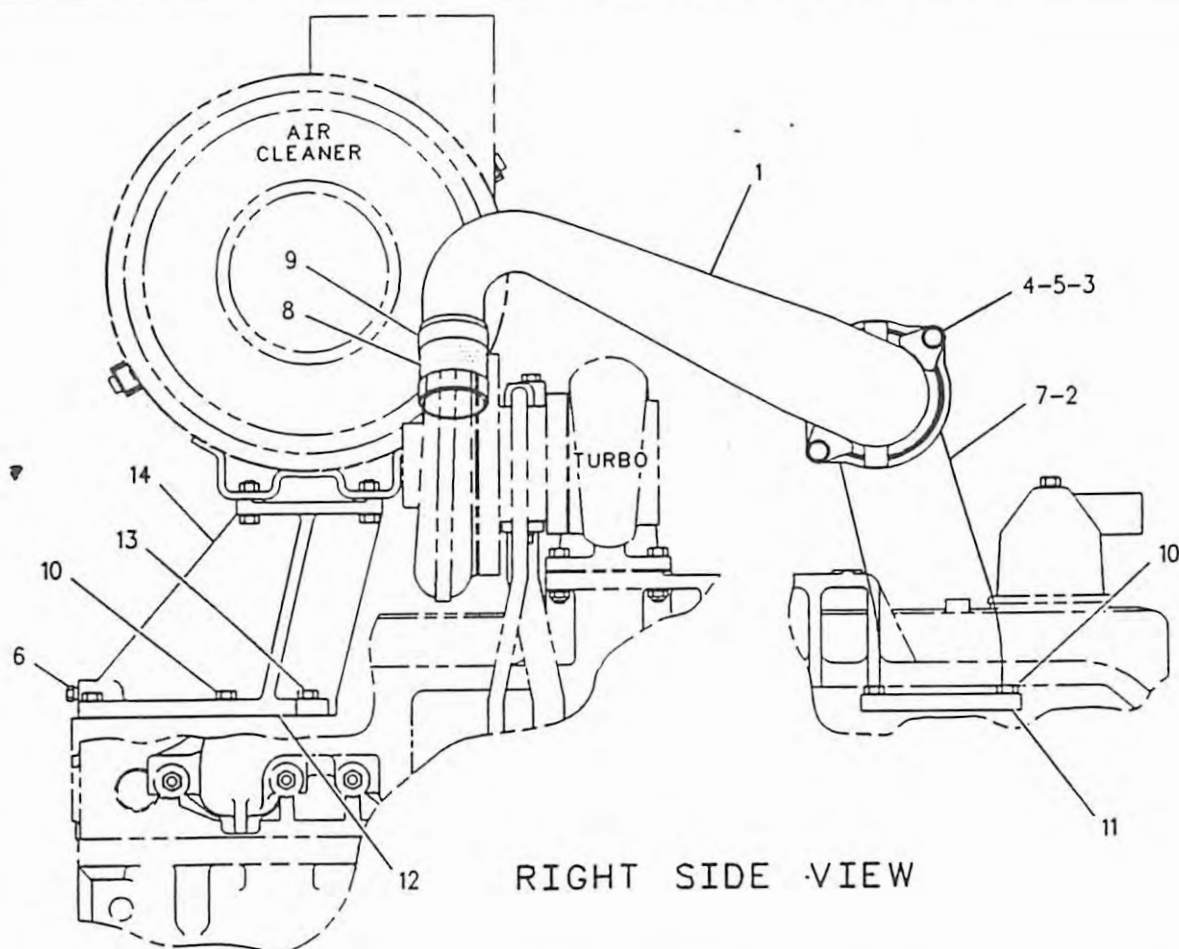
C-CHANGE FROM PREVIOUS TYPE

B-457436 EP

1059

2P6572 MANIFOLD GP-EXHAUST

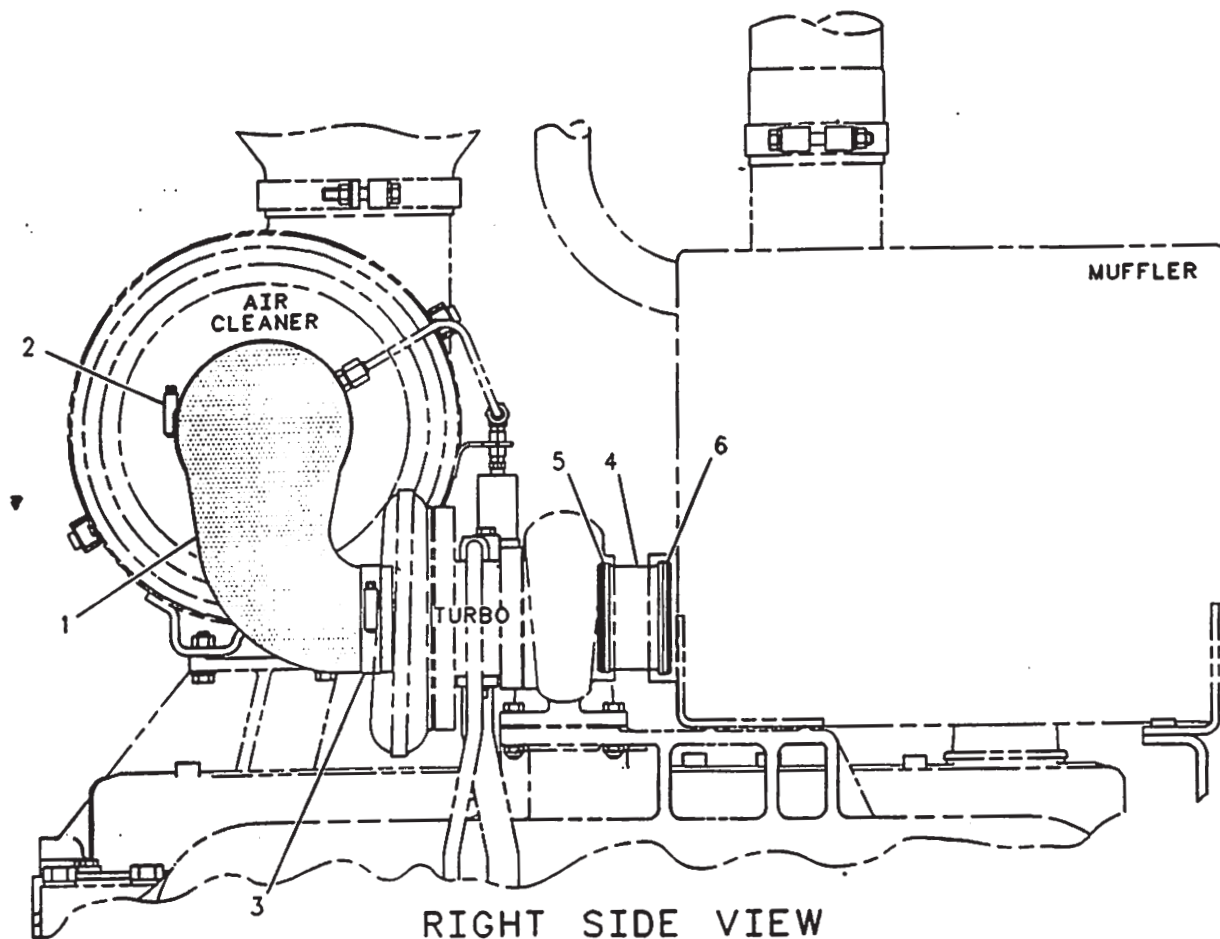
AIR INLET AND EXHAUST SYSTEM



NOTE	REF NO	PART NUMBER	QTY	PART NAME	NOTE	REF NO	PART NUMBER	QTY	PART NAME
	1	1063392	1	PIPE-AIR					
	2	5H7704	2	SEAL-O-RING					
	3	7W1945	2	RETAINER					
	4	OL1351	2	BOLT					
	5	5M2894	2	WASHER					
	6	8T6764	1	PLUG-PIPE					
	7	1100019	1	PIPE					
	8	4N9216	1	HOSE-AIR					
	9	5P0597	2	CLAMP					
	10	1A2029	9	BOLT					
	11	5S6735	1	GASKET					
	12	9S7083	1	GASKET-INLET					
	13	5F4899	1	BOLT					
	14	1100016	1	SUPPORT-AIR CLEANER					

F-571119 EP

AIR INLET AND EXHAUST SYSTEM



NOTE	REF NO	PART NUMBER	QTY	PART NAME	NOTE	REF NO	PART NUMBER	QTY	PART NAME
	1	1067658	1	HOSE					
	2	5P0599	1	CLAMP					
	3	3E7404	1	CLAMP-HOSE					
	4	7E8453	1	COUPLING-TURBOCHARGER					
	5	6N0009	1	RING-METAL SEAL					
	6	6N0992	1	RING-METAL SEAL					

F-572269 EP

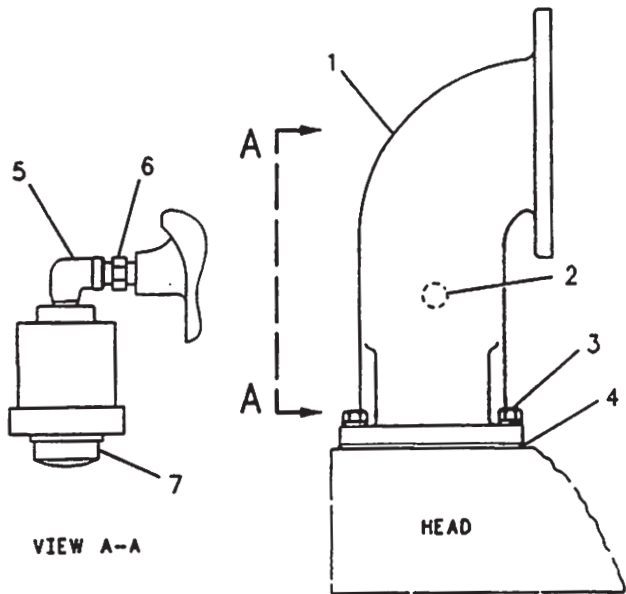
1071

7C2094 LINES GP-AIR

S/N 8MN460-Up

Part Of 1350355 Installation Ar-Engine

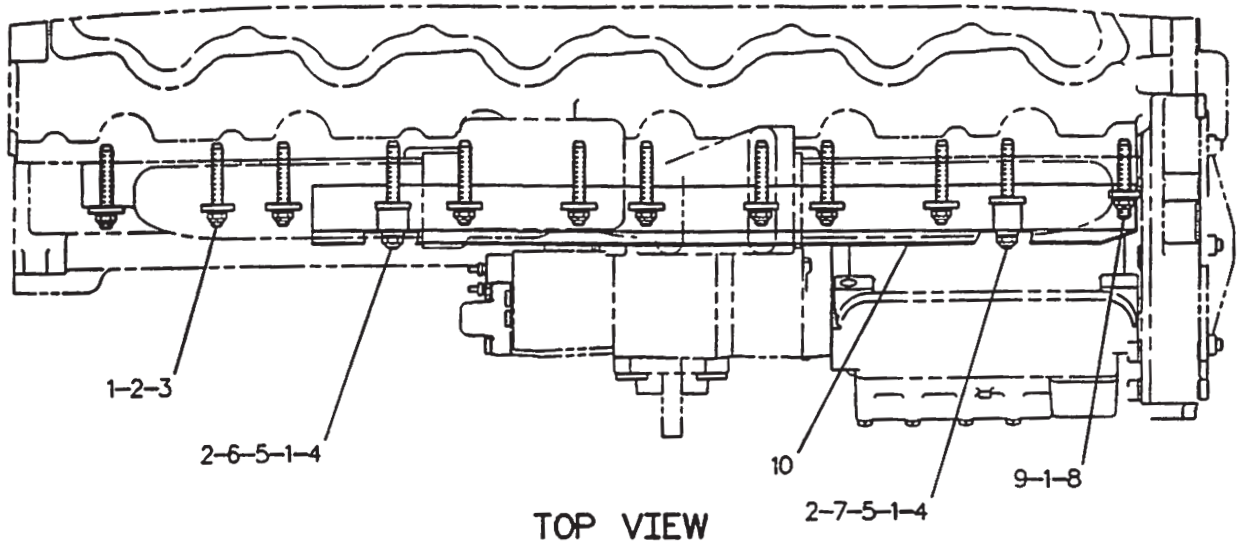
AIR INLET AND EXHAUST SYSTEM



NOTE	REF NO	PART NUMBER	QTY	PART NAME
	1	2P3337	1	PIPE AS-AIR TRANSFER
	2	7M1674	1	ELEMENT-FILTER
	3	8T2502	4	BOLT
	4	5S6735	1	GASKET
	5	3B8822	1	ELBOW
	6	5K5068	1	NIPPLE
	7	8N2694	1	INDICATOR-AIR FILTER SERVICE

R-625638 CP

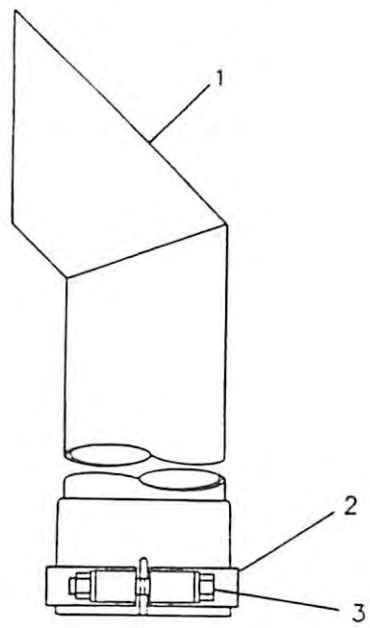
AIR INLET AND EXHAUST SYSTEM



NOTE	REF NO	PART NUMBER	QTY	PART NAME	NOTE	REF NO	PART NUMBER	QTY	PART NAME
	1	2N2766	12	LOCKNUT					
	2	8M7145	11	WASHER					
	3	6V1426	9	STUD-TAPERLOCK					
	4	6V1427	2	STUD-TAPERLOCK					
	5	5M2894	2	WASHER					
	6	1M7643	1	SPACER					
	7	6B7469	1	SPACER					
	8	1061793	1	STUD-TAPERLOCK					
	9	9M6527	1	WASHER-HARD					
	10	7E9301	1	SHIELD-HEAT					

F-571334 EP

AIR INLET AND EXHAUST SYSTEM



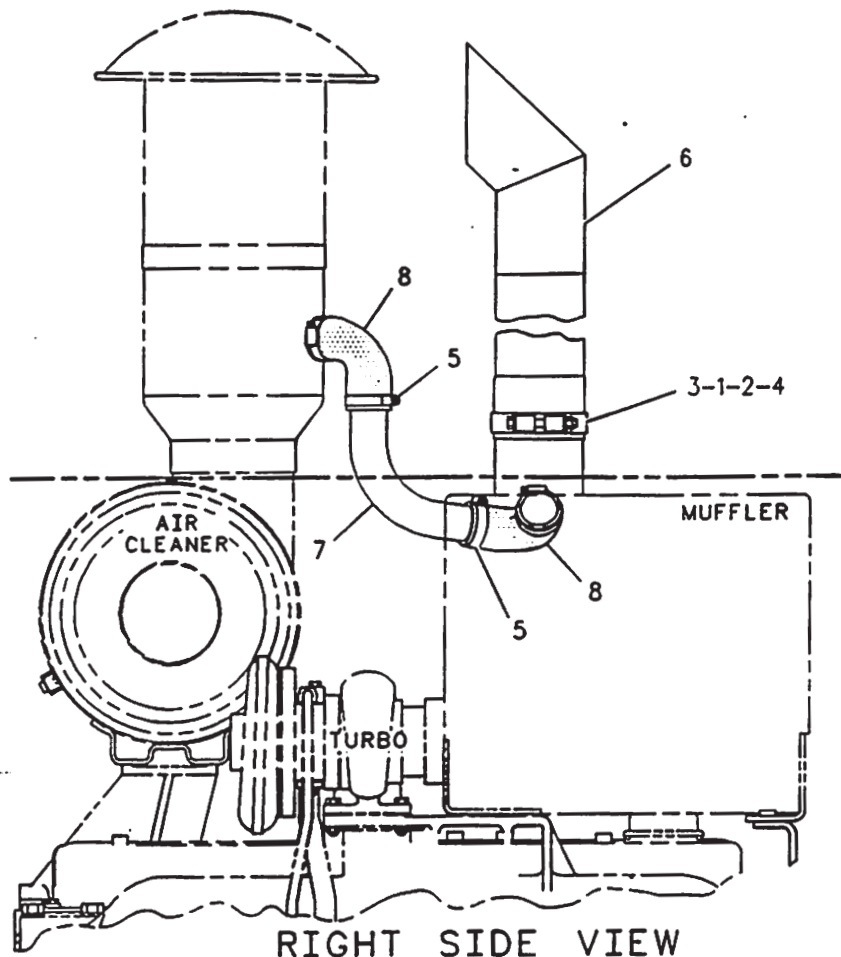
NOTE	REF NO	PART NUMBER	QTY	PART NAME
	1	2P4611	1	PIPE-EXHAUST
	2	4P3778	1	CLAMP
	3	OS1619	1	BOLT
		1B5355	1	NUT-FULL
		5M2894	2	WASHER

R-519774 EP

1061

4N8298 EXTENSION GP-EXHAUST
S/N 8MN1-459
Part Of 1162891 Installation Ar-Engine

AIR INLET AND EXHAUST SYSTEM



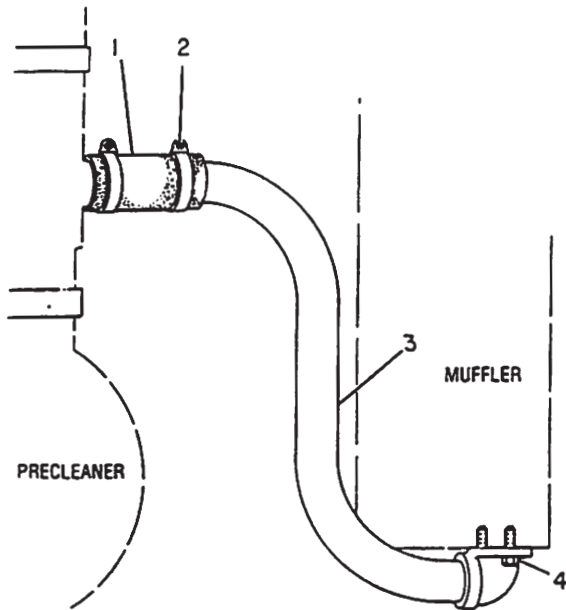
NOTE	REF NO	PART NUMBER	QTY	PART NAME	NOTE	REF NO	PART NUMBER	QTY	PART NAME
	1	0S1619	1	BOLT (3/8-16X3IN)					
	2	1B5355	1	NUT-FULL (3/8-161THD)					
	3	4P3778	1	CLAMP					
	4	5M2894	2	WASHER					
	5	9M0164	4	CLAMP-HOSE					
	6	1138512	1	EJECTOR AS-EXHAUST					
	7	4P4327	1	TUBE					
	8	9S1102	2	HOSE-FLOW					

F-602410 CP

1068

1138513 DUST EJECTOR GP
S/N 8MN460-Up
Part Of 1350355 Installation Ar-Engine

AIR INLET AND EXHAUST SYSTEM



NOTE	REF NO	PART NUMBER	QTY	PART NAME
E	1	5P0763		HOSE 11.43CM(4.50IN)
	2	5P0597	2	CLAMP
	3	2W9096	1	TUBE AS-SECONDARY FLOW
	4	3H5841	2	BOLT

E-ORDER BY THE CENTIMETER

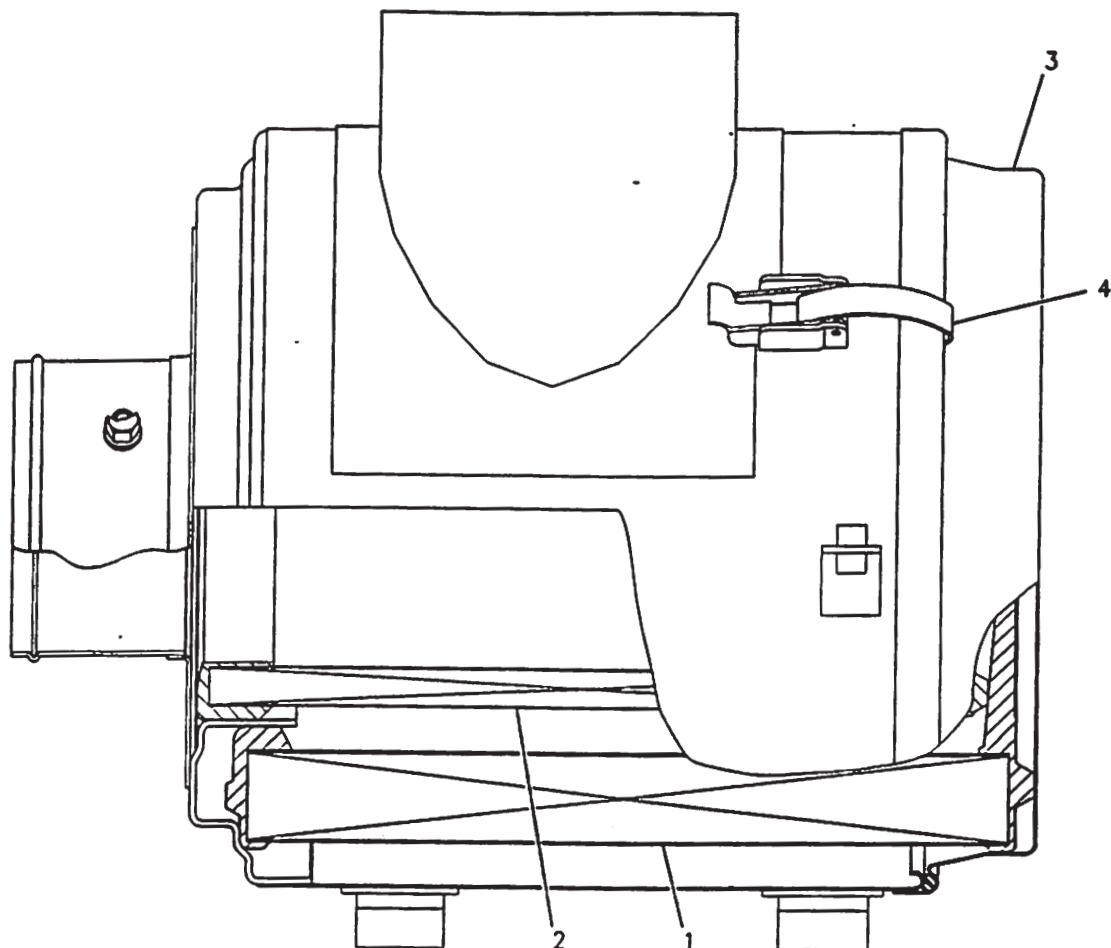
R-558916 EP

1068

2W9095 DUST EJECTOR GP
S/N 8MN1-459

Part Of 1162891 Installation Ar-Engine

AIR INLET AND EXHAUST SYSTEM



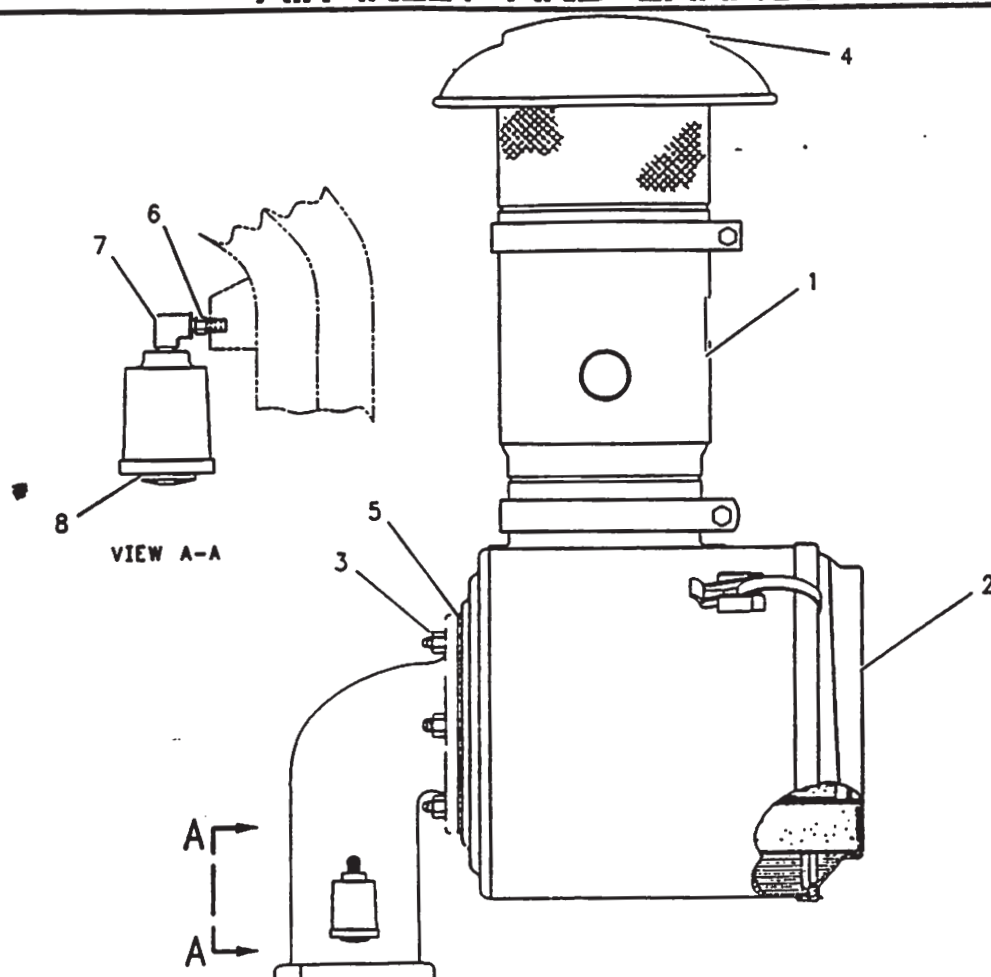
NOTE	REF NO	PART NUMBER	QTY	PART NAME	NOTE	REF NO	PART NUMBER	QTY	PART NAME
	1	610273	1	ELEMENT AS-PRIMARY					
	2	610274	1	ELEMENT AS-SECONDARY					
	3	610275	1	COVER AS-AIR CLEANER					
		4P5524	1	SEAL-O-RING					
		1012850	1	FILM-AIR CLEANER					
	4	8N4617	2	KIT-AIR CLEANER CLAMP					
		9B2596	1	RIVET					

F-573980 EP

1051

1067656 AIR CLEANER GP
S/N 8MN460-Up
Part Of 7E5677 Air Cleaner

AIR INLET AND EXHAUST SYSTEM



NOTE	REF NO	PART NUMBER	QTY	PART NAME	NOTE	REF NO	PART NUMBER	QTY	PART NAME
Y	1	458826	1	BODY AS					
		7F0192	1	BOLT (3/8-16X2.0IN)					
		1D4717	1	NUT					
	2	6I2546	1	AIR CLEANER GP					
	3	2K4973	6	LOCKNUT					
	4	7S6340	1	PREScreen AS					
		2D2285	1	BOLT					
		1D4717	1	NUT					
	5	4M1485	1	GASKET					
	6	5K5068	1	NIPPLE					
	7	388822	1	ELBOW					
	8	8N2694	1	INDICATOR-AIR FILTER SERVICE					

Y-SEPARATE ILLUSTRATION

R-632276 CP

1051

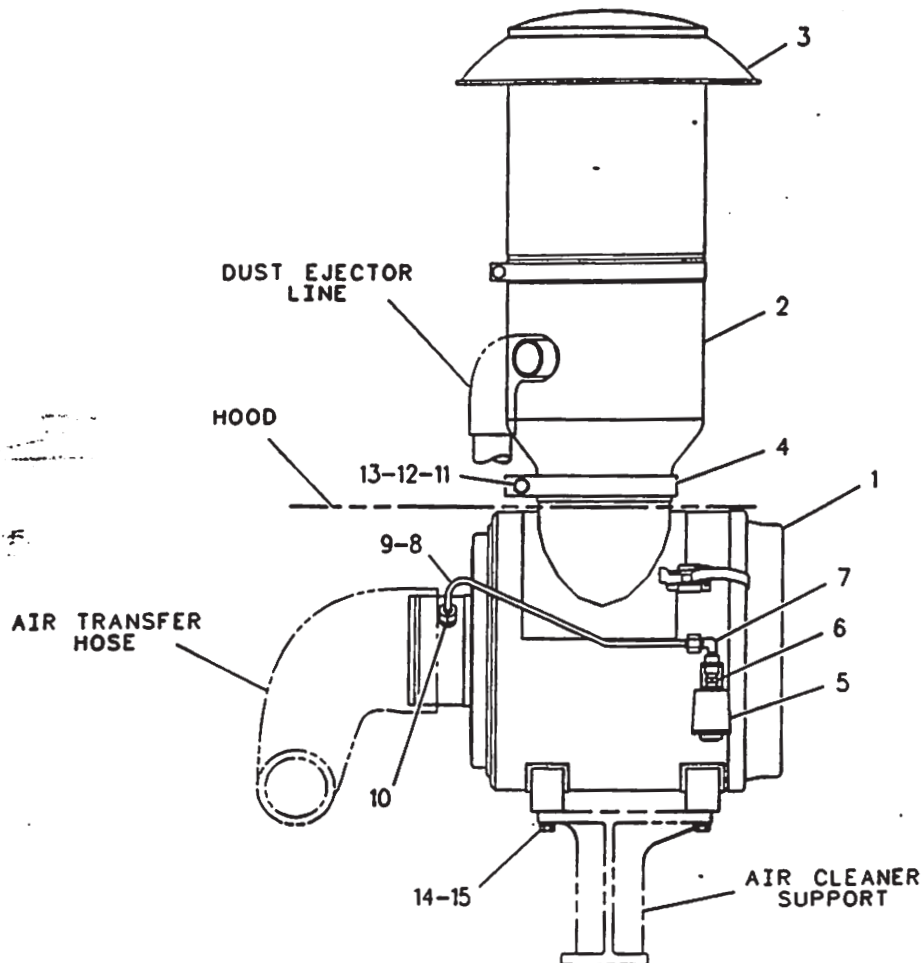
7C8196 AIR CLEANER GP

S/N 8MN1-459

6I2546-Page 49

Part Of 1162891 Installation Ar-Engine

AIR INLET AND EXHAUST SYSTEM

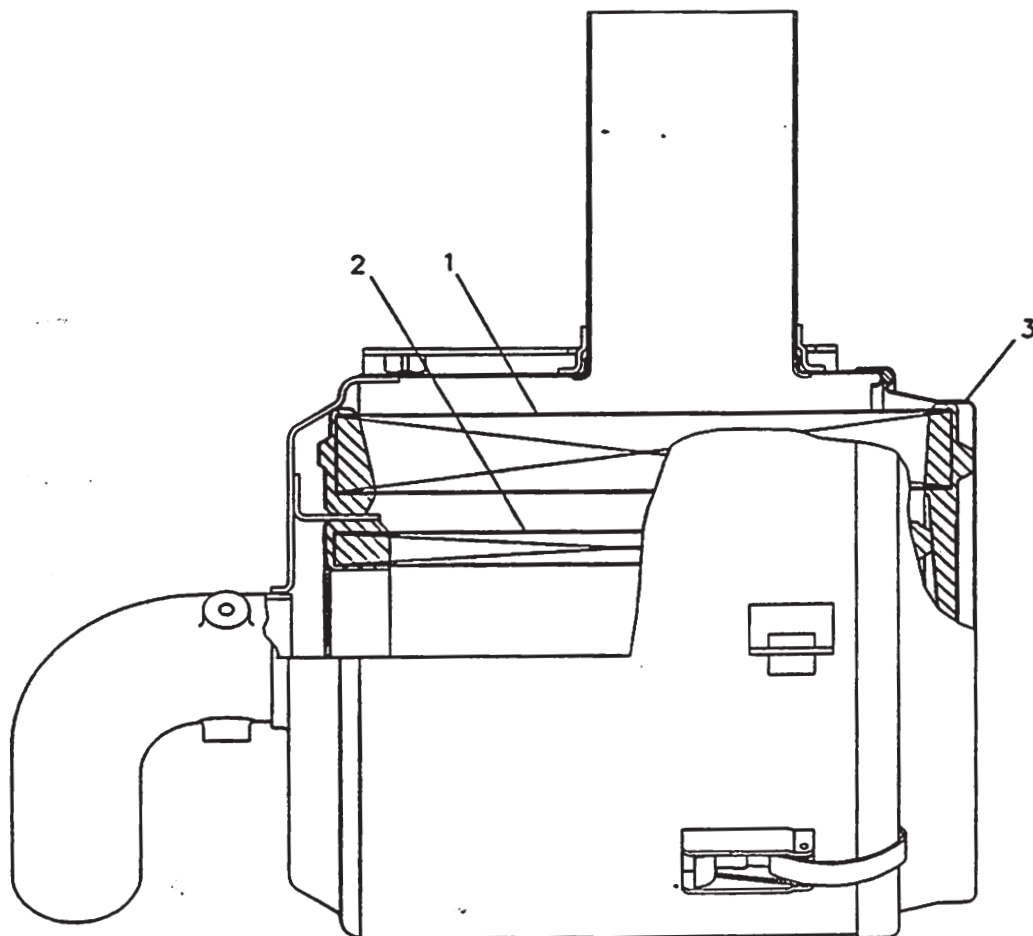


NOTE	REF NO	PART NUMBER	QTY	PART NAME	NOTE	REF NO	PART NUMBER	QTY	PART NAME
Y	1	1067656	1	AIR CLEANER GP					
	2	9S6147	1	BODY AS					
	3	7S9396	1	PRESCREENER AS					
		OS1591	1	BOLT (3/8-16X1.5IN)					
		1D4717	1	NUT (3/8-16 THD)					
	4	7S7680	1	CLAMP					
	5	8N2694	1	INDICATOR-AIR FILTER SERVICE					
	6	5K5068	1	NIPPLE					
	7	7X0492	1	ELBOW-90 DEGREE					
	8	1067657	1	TUBE AS					
	9	4J5477	2	SEAL-O-RING (8.61MM ID)					
	10	8T4128	1	ADAPTER-ORFS					
	11	6V8801	1	NUT (3/8-16 THD)					
	12	8T9377	1	BOLT (3/8-16X2.25IN)					
	13	8T4896	2	WASHER-HARD					
	14	5S7382	4	BOLT (3/8-16X1.375IN)					
	15	5P1075	4	WASHER-HARD					

Y-SEPARATE ILLUSTRATION

F-602449 CP

AIR INLET AND EXHAUST SYSTEM



NOTE	REF NO	PART NUMBER	QTY	PART NAME	NOTE	REF NO	PART NUMBER	QTY	PART NAME
	1	6I2499	1	ELEMENT AS-PRIMARY					
	2	6I2500	1	ELEMENT AS-SECONDARY					
	3	6I4466	1	COVER AS-AIR CLEANER					

F-556219 EP