

# COOLING SYSTEM

## 216-9740 CONNECTION GP-WATER

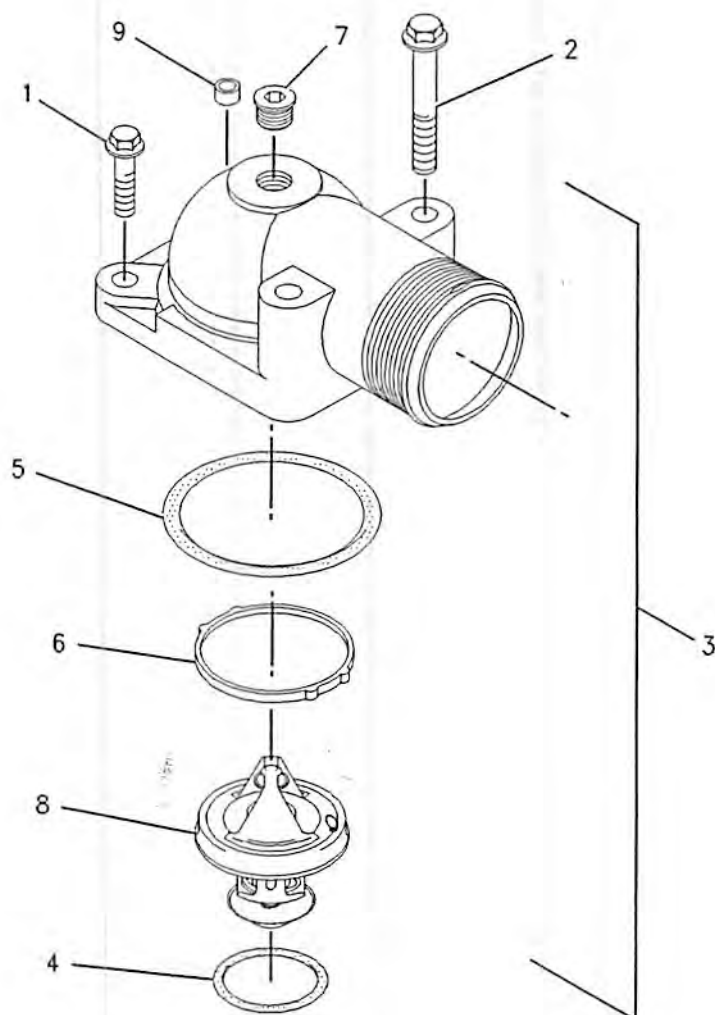
S/N: CPT1-UP

PART OF 206-2744 ENGINE AR-PRIMARY

SMCS-1380

i01855199

NOTE	REF NO	GRAPHIC REF	PART NUMBER	QTY	PART NAME						SEE PAGE
					1	2	3	4	5	6 (PRODUCT LEVEL)	
	1	1	6I-0260	1	BOLT (M8X1.25X25MM)						
	2	1	6I-4374	1	BOLT						
	3	1	216-9743	1	CONNECTION AS						
	4	1	140-7515	1	SEAL-O-RING (REGULATOR)						
	5	1	141-6188	1	SEAL (REGULATOR HOUSING)						
	6	1	162-0236	1	RING						
	7	1	162-0237	1	PLUG (M8X25MM)						
	8	1	216-9737	1	REGULATOR-WATER TEMPERATURE						
	9	1	171-1078	1	SPACER						



GRAPHIC #1

g00861524

# COOLING SYSTEM

## 221-5285 COOLER GP-FLTR BASE & ENG OIL

S/N: CPT1-UP

PART OF 206-2744 ENGINE AR-PRIMARY

SMCS-1306, 1378

i01812072

NOTE	REF NO	GRAPHIC REF	PART NUMBER	QTY	PART NAME						SEE PAGE
					1	2	3	4	5	6 (PRODUCT LEVEL)	
	1	1	2M-9780	1	SEAL-O-RING						
	2	1	5F-9657	3	SEAL-O-RING						
M	3	1	5P-8196	1	PLUG						
	4	1	6I-0260	6	BOLT (M8X1.25X25MM)						
	5	1	6I-0291	4	NUT (M8X1.25)						
	6	1	6I-4786	1	GASKET						
	7	1	7C-1493	1	VALVE AS-BYPASS (OIL FILTER)						
	8	1	7W-9028	1	BASE AS-OIL FILTER						
		1	2P-2537	1	STUD-HOLLOW						
	9	1	9L-9188	1	SPRING-VALVE						
	10	1	100-4461	6	BOLT (M10X50MM)						
M	11	1	101-3895	3	BOLT (M8X1.25X35MM)						
	12	1	124-3815	14	BOLT (M8X16X1.25MM)						
	13	1	140-8783	4	BOLT (M10X45MM)						
	14	1	162-0757	2	SEAL						
	15	1	162-0761	4	FLANGE						
	16	1	162-9754	2	SEAL						
	17	1	175-3915	1	COOLER-OIL						
	18	1	216-9637	1	HOUSING						
	19	1	216-9638	1	GASKET						
	20	1	216-9641	1	TUBE						
	21	1	216-9643	2	GASKET						
	22	1	216-9645	1	TUBE						
	23	1	220-7171	1	ADAPTER-HOUSING						
	24	1	221-5278	1	HEAD AS						
	25	1	219-1818	1	CONNECTION						
	26	1	221-4520	1	GASKET						

AVAILABLE REPAIR KIT(S):

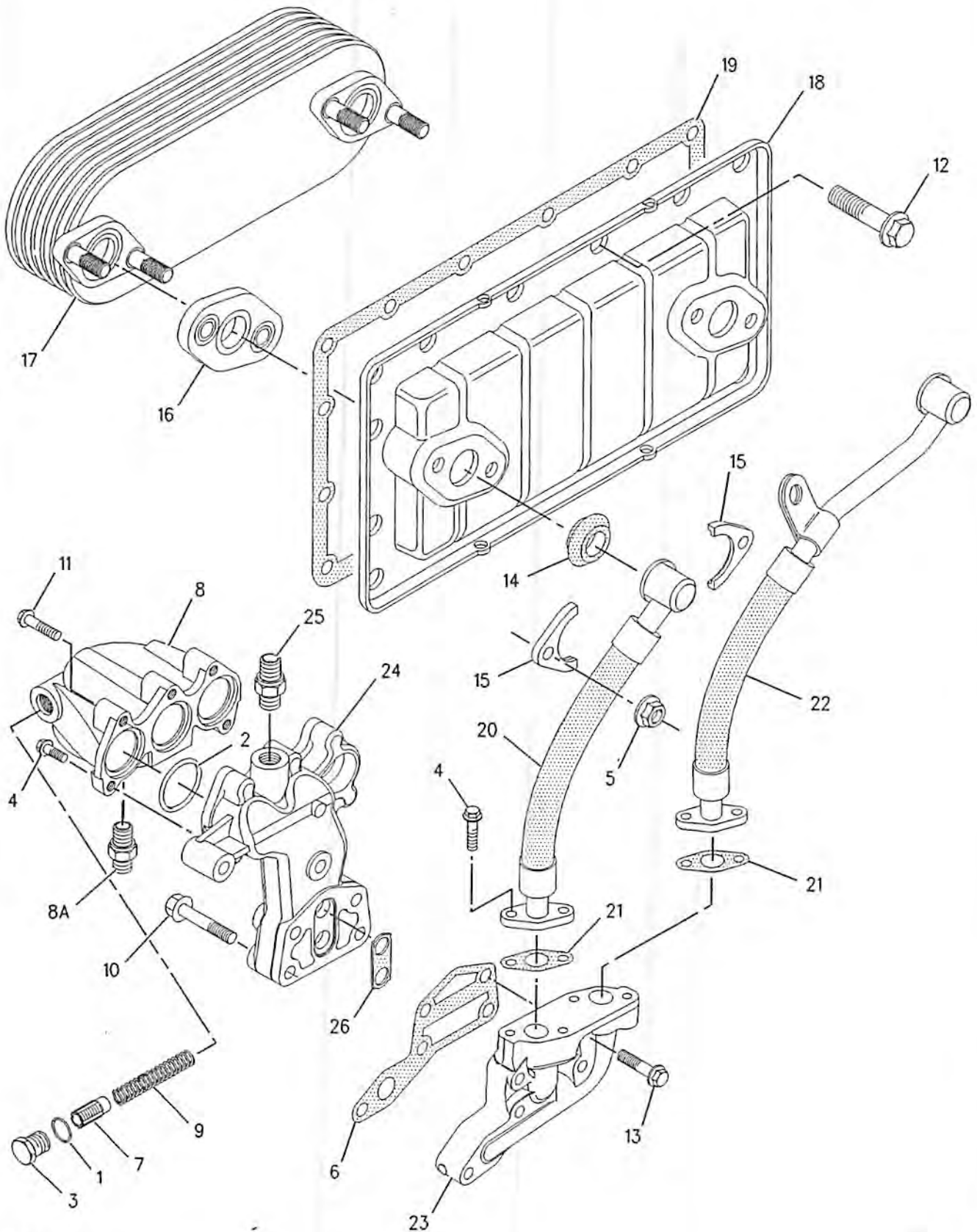
219-2172 1 KIT-REPAIR

M-METRIC PART

# COOLING SYSTEM

221-5285 COOLER GP-FLTR BASE & ENG OIL (contd.)

i01812072



GRAPHIC #1

g00887831

# COOLING SYSTEM

## 185-1045 FAN GP-SUCTION

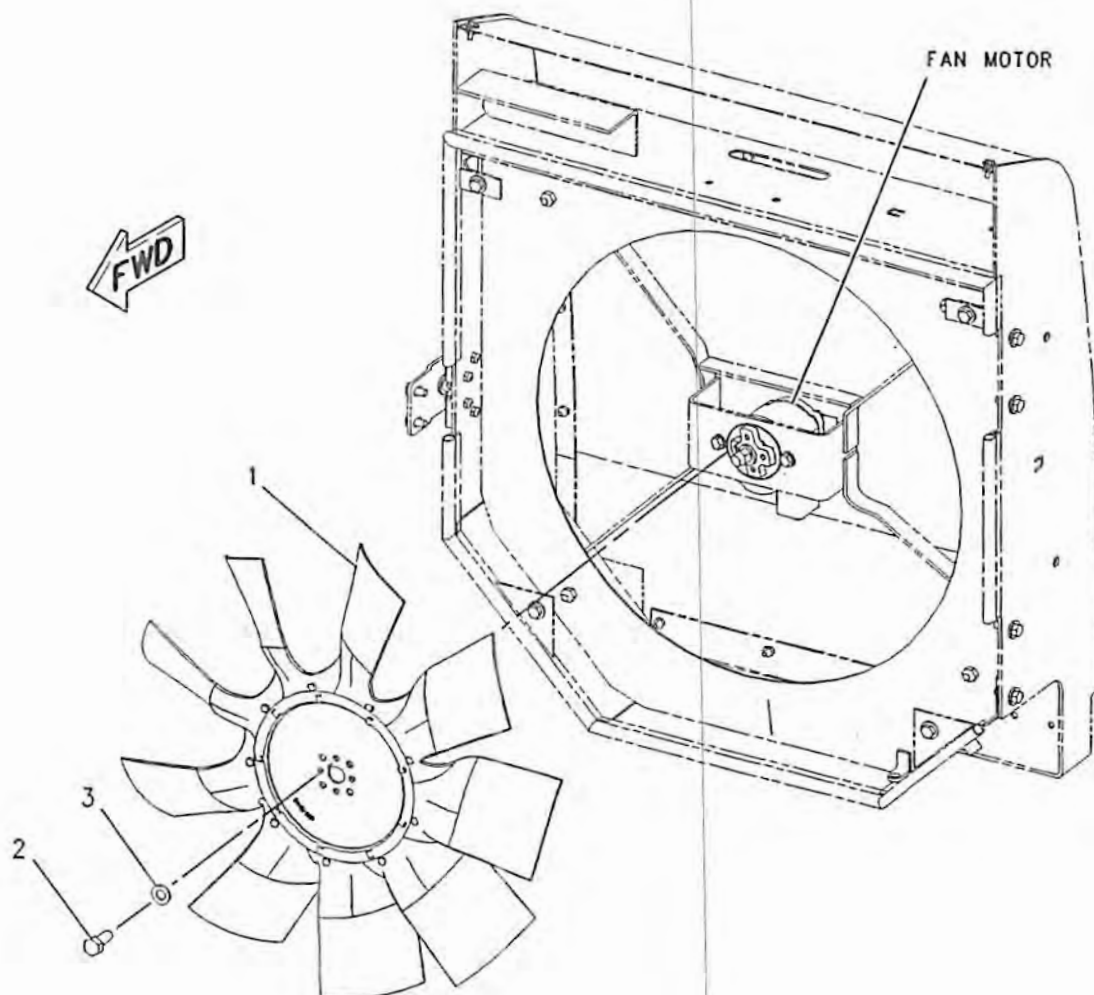
S/N: RTA1-UP; RBB1-UP  
PART OF 216-8963 INSTALLATION AR-ENGINE

SMCS-1356

i01804764

NOTE	REF NO	GRAPHIC REF	PART NUMBER	QTY	PART NAME	1	2	3	4	5	6 (PRODUCT LEVEL)	SEE PAGE
	1	1	185-1046	1	SPIDER AS-FAN							
M	2	1	8T-4189	4	BOLT (M8X1.25X20MM)							
	3	1	8T-4224	4	WASHER-HARD (8.8X16X2MM THK)							

M-METRIC PART



GRAPHIC #1

g00923981

# COOLING SYSTEM

## 202-7215 GUARD GP-FAN

S/N: RTA1-UP; RBB1-UP

PART OF 176-5181, 176-5201 CHASSIS AR

SMCS-1360

i01814754

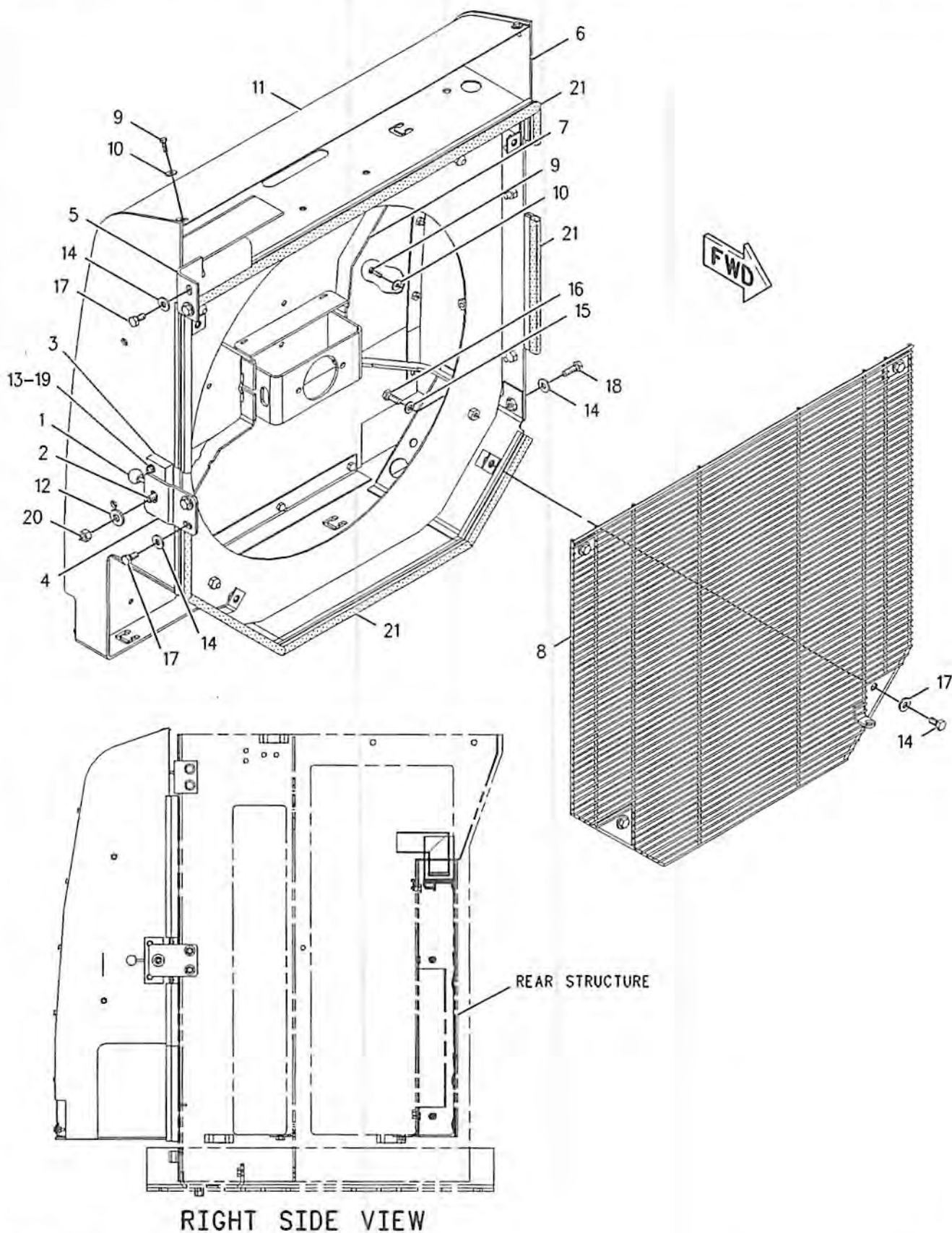
NOTE	REF NO	GRAPHIC REF	PART NUMBER	QTY	PART NAME						SEE PAGE
					1	2	3	4	5	6 (PRODUCT LEVEL)	
	1	1	5V-8780	1	KNOB						
	2	1	8T-4157	1	STRIKER AS						
		1	8T-4158	1	WASHER						
	3	1	112-5345	1	LATCH AS-DOOR						
	4	1	122-6246	1	PLATE						
	5	1	174-4246	1	BRACKET						
	6	1	202-7216	1	GUARD AS						
M		1	6V-9632	10	NUT-WELD (M6X1 THD)						
		1	9R-2672	1	BOSS (M10X20MM)						
	7	1	202-7857	1	MOUNT AS						
		1	5D-9629	2	ROD						
	8	1	205-2214	1	GRILL AS						
M	9	1	186-0815	20	BOLT-HEX HEAD (M6X1X20MM)						
	10	1	186-0817	20	WASHER-HARD (7X19X2MM THK)						
	11	1	225-8383	1	PLATE						
	12	1	5P-1076	1	WASHER-HARD (13.5X30X4MM THK)						
M	13	1	7X-2533	4	BOLT (M6X1X35MM)						
	14	1	7X-7729	12	WASHER (11X25X3MM THK)						
	15	1	8T-4121	4	WASHER-HARD (11X21X2.5MM THK)						
M	16	1	8T-4136	4	BOLT (M10X1.5X25MM)						
M	17	1	8T-4137	8	BOLT (M10X1.5X20MM)						
M	18	1	8T-4195	4	BOLT (M10X1.5X30MM)						
	19	1	8T-4205	4	WASHER-HARD (7.2X14.5X2MM THK)						
M	20	1	8T-4244	1	NUT (M12X1.75 THD)						
D	21	1	5P-7211		SEAL (2.7M)						

D-ORDER BY THE METER  
M-METRIC PART

# COOLING SYSTEM

202-7215 GUARD GP - FAN (contd.)

i01814754



GRAPHIC #1

g00916964

# COOLING SYSTEM

## 192-4360 LINES GP-WATER

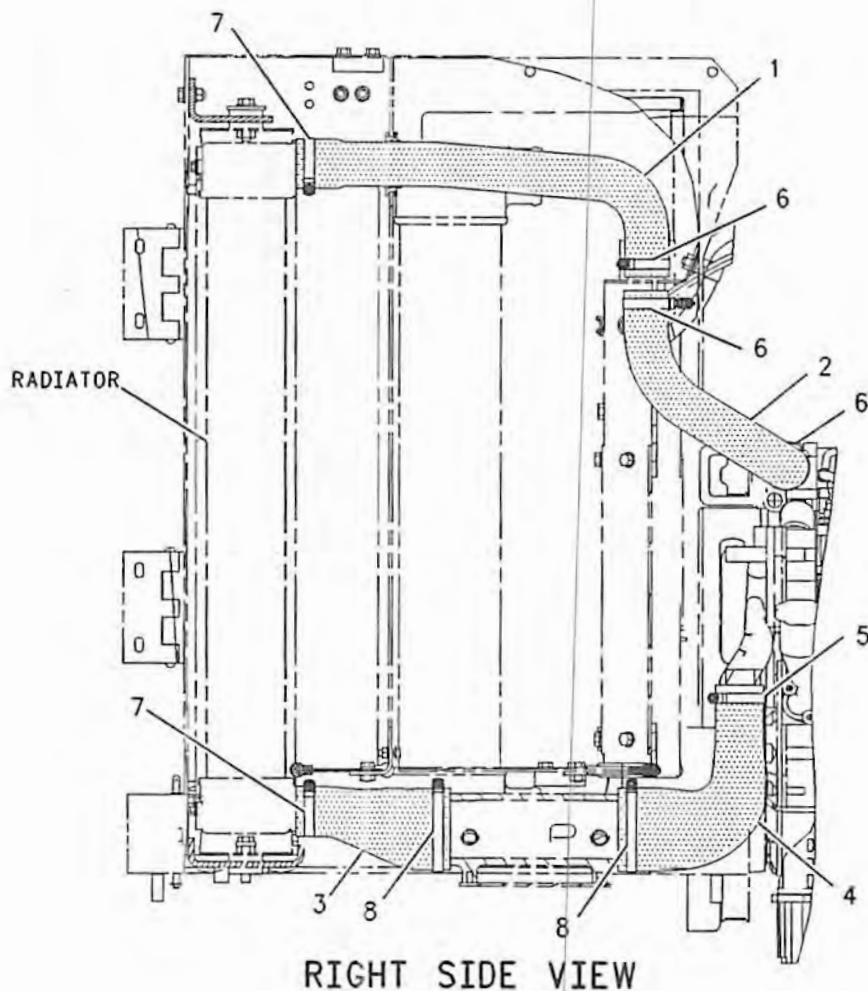
S/N: RTA1-UP; RBB1-UP

PART OF 203-5945, 203-5946 AXLE AR-OSCILLATING  
AN ATTACHMENT

SMCS-1380

i01819785

NOTE	REF NO	GRAPHIC REF	PART NUMBER	QTY	PART NAME						SEE PAGE
					1	2	3	4	5	6 (PRODUCT LEVEL)	
	1	1	185-1023	1	HOSE						
	2	1	185-1024	1	HOSE						
	3	1	185-1030	1	HOSE						
	4	1	185-1031	1	HOSE						
	5	1	214-7458	1	CLAMP-T'BOLT						
	6	1	215-4011	3	CLAMP						
	7	1	216-6944	2	CLAMP						
	8	1	216-6946	2	CLAMP						



GRAPHIC #1

g00914698

# COOLING SYSTEM

## 192-4367 LINES GP-WATER

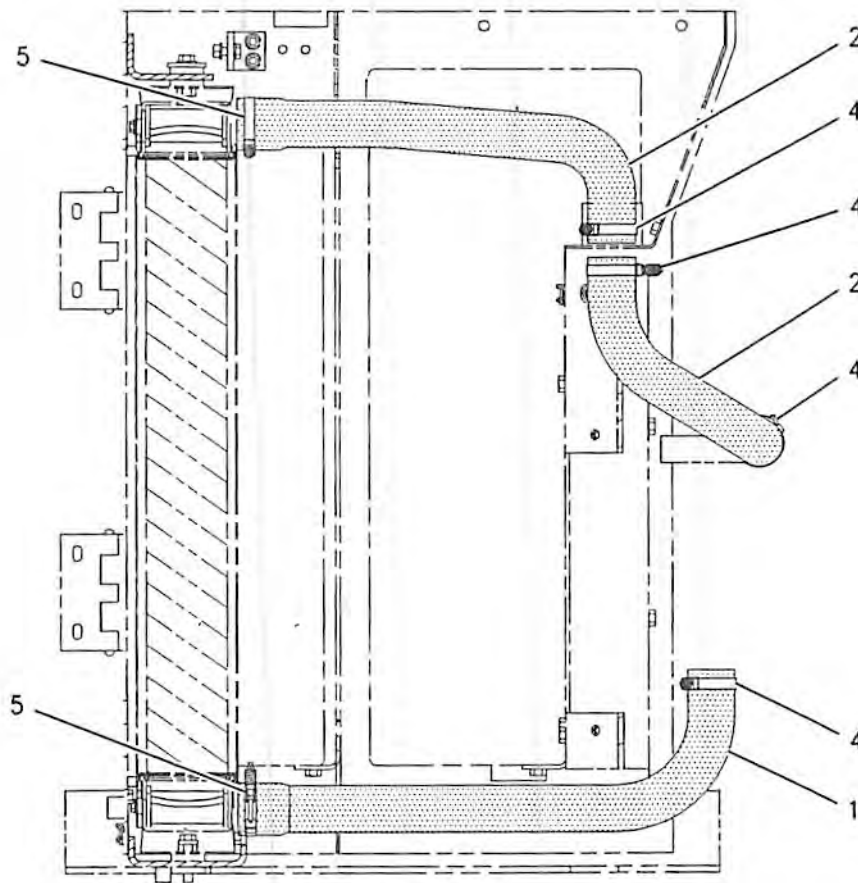
S/N: RTA1-UP; RBB1-UP

PART OF 203-5943, 203-5944 AXLE AR-OSCILLATING  
AN ATTACHMENT

SMCS-1380

i01819802

NOTE	REF NO	GRAPHIC REF	PART NUMBER	QTY	PART NAME						SEE PAGE
					1	2	3	4	5	6 (PRODUCT LEVEL)	
	1	1	185-1021	1	HOSE						
	2	1	185-1023	1	HOSE						
	3	1	185-1024	1	HOSE						
	4	1	215-4011	4	CLAMP						
	5	1	216-6944	2	CLAMP						



RIGHT SIDE VIEW

GRAPHIC #1

g00930151

# COOLING SYSTEM

## 221-5369 PUMP GP-WATER

S/N: CPT1-UP

PART OF 206-2744 ENGINE AR-PRIMARY

SMCS-1361

i01812104

NOTE	REF NO	GRAPHIC REF	PART NUMBER	QTY	PART NAME						SEE PAGE
					1	2	3	4	5	6 (PRODUCT LEVEL)	
	1	1	6I-0456	3	BOLT (M8X1.25X45MM)						
	2	1	6I-0645	3	BOLT (M8X1.25X25MM)						
	3	1	6I-4374	3	BOLT						
	4	1	6I-4793	1	BOLT						
	5	1	100-3751	2	BOLT (M8X1.25X65MM)						
	6	1	101-3771	1	BOLT						
	7	1	101-3805	3	BOLT (M8X1.25X90MM)						
	8	1	201-8745	1	GASKET (WATER PUMP)						
	9	1	140-7505	1	COVER						
	10	1	140-7506	1	GASKET-COVER						
	11	1	140-7512	1	KIT-HOSE (WATER) (REGULATOR HOUSING)						
	12	1	127-8286	2	CLAMP-HOSE						
	13	1	171-1076	1	HOUSING AS (REGULATOR)						
	14	1	172-4844	1	SEAL-O-RING						
	15	1	216-9734	1	PUMP GP-WATER						
AVAILABLE REPAIR KIT(S):											
			177-8782	1	KIT-WATER PUMP						



# COOLING SYSTEM

## 185-1015 RADIATOR GP

S/N: RTA1-UP; RBB1-UP  
PART OF 216-8963 INSTALLATION AR-ENGINE

SMCS-1353

i01855167

NOTE	REF NO	GRAPHIC REF	PART NUMBER	QTY	PART NAME						SEE PAGE
					1	2	3	4	5	6 (PRODUCT LEVEL)	
E	1	1	8C-3681		HOSE (108CM)						
E	1A	3	8C-3681		HOSE (178CM)						
E	2	2	8I-1362		HOSE (160CM)						
E	3	3	9X-2133		HOSE (107CM)						
D	4	1	5P-5755		SEAL (.9M)						
D	4A	3	5P-5755		SEAL (2.4M)						
D	4B	3	5P-5755		SEAL (2.3M)						
D	4C	3	5P-5755		SEAL (3.1M)						
D	5	3	5P-7211		SEAL (.9M)						
D	5A	3	5P-7211		SEAL (.07M)						
D	5B	3	5P-7211		SEAL (.3M)						
D	5C	3	5P-7211		SEAL (.8M)						
	6	3	5D-1026	2	CLAMP-HOSE						
	7	2	6N-6984	4	MOUNT						
	8	1	7K-1181	1	STRAP-CABLE						
	9	2	7T-8332	4	MOUNTING						
	10	2	9M-7958	2	CLAMP-HOSE						
	11	1	009-3101	1	RING-RETAINING						
	12	3	127-5447	6	SPACER						
	13	1,2	185-1016	1	RADIATOR GP						
	13A	2	185-1027	4	BRACKET AS						
	13B	2	225-4287	1	VALVE GP-RADIATOR DRAIN						
	13C	2	7X-3393	8	WASHER-HARD						
M	13D	2	8T-4189	8	BOLT (M8X1.25X20MM)						
M	13E	2	8T-4200	12	BOLT (M8X1.25X16MM)						
	13F	2	8T-4224	12	WASHER-HARD (8.8X16X2MM THK)						
	14	1	185-1017	1	AFTERCOOLER AS						
	15	2	185-1036	1	BRACKET						
	16	2	185-1049	1	PLATE						
	17	1	191-9177	1	GUARD AS						
	17A	1	7W-0815	1	SPACER						
		1	092-1136	2	BAR						
	17B	2	140-9312	2	HINGE AS						
	17C	1	7T-1099	6	LINK						
M	17D	2	8T-3612	1	NUT-WELD (M8X1.25 THD)						
	17E	1	9C-6809	5	BLOCK						
	17F	1	9R-2672	2	BOSS (M10X20MM)						
	18	2	191-9182	1	PLATE						
	19	3	191-9184	1	PLATE						
	20	3	191-9192	1	PLATE						
	21	1	215-8978	1	ROD						
	22	3	227-0104	1	TANK GP-COOLANT						
	22A	3	227-4376	1	CAP AS-RADIATOR						
	23	3	229-8672	1	SEAL						
	24	3	229-9286	1	SEAL						
	25	2	230-7246	1	PLATE AS						
M		2	8T-3490	1	NUT-WELD (M10X1.5 THD)						
	26	3	053-0189	1	GROMMET						
	27	3	1B-3057	2	CLIP						
	28	2	3K-9520	1	GROMMET						
	29	3	4D-7388	2	CLIP						
M	30	3	5C-7261	4	NUT (M8X1.25 THD)						
	31	3	5P-4116	8	WASHER-HARD (8.8X20.5X2MM THK)						
	32	3	5P-6887	1	GROMMET						
	33	2	8F-6437	2	WASHER (13.5X50.8X4.76MM THK)						
	34	1,2,3	8T-4121	29	WASHER-HARD (11X21X2.5MM THK)						

# COOLING SYSTEM

185-1015 RADIATOR GP (contd.)

i01855167

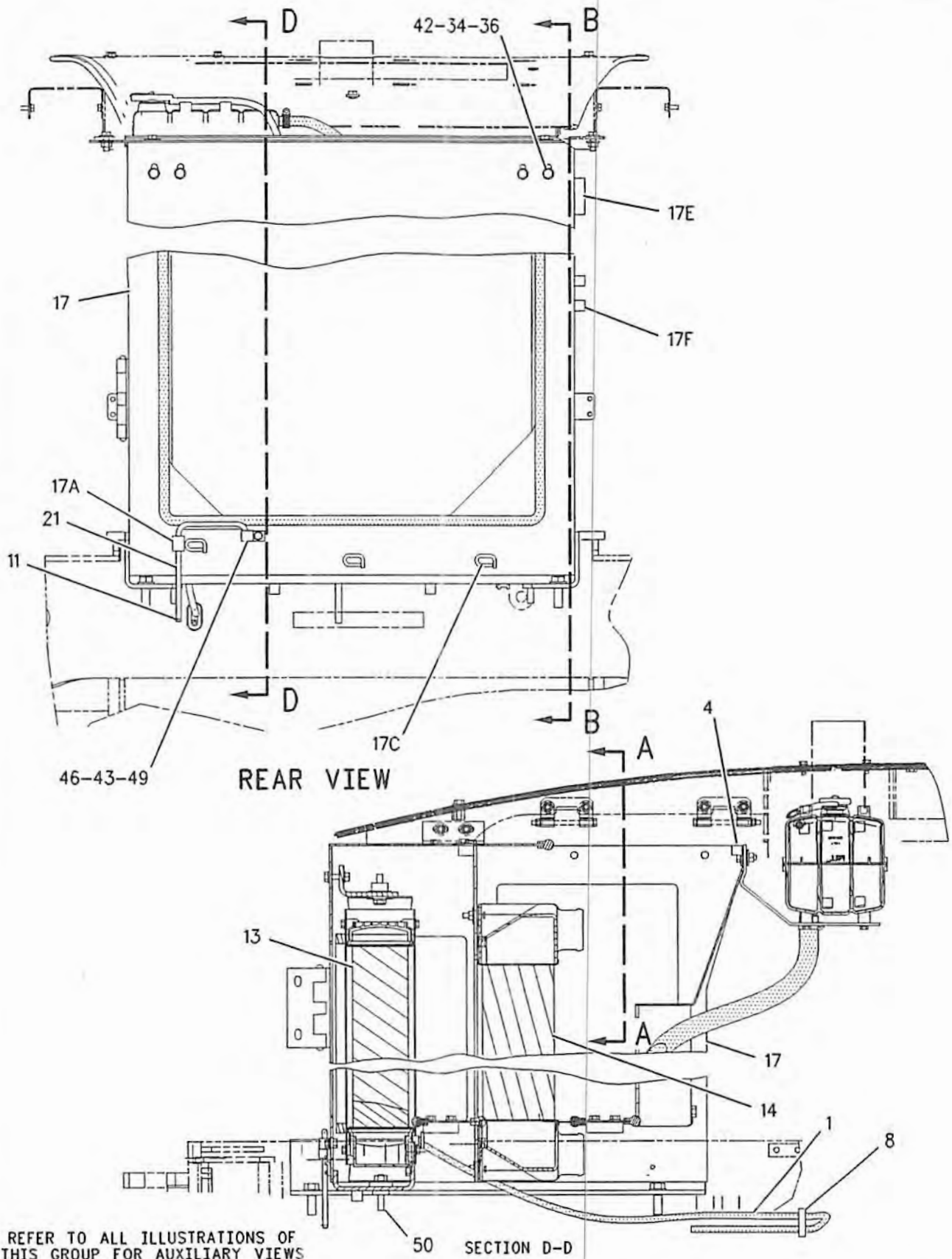
NOTE	REF NO	GRAPHIC REF	PART NUMBER	QTY	PART NAME 1 2 3 4 5 6 (PRODUCT LEVEL)	SEE PAGE
	35	3	8T-4122	4	WASHER-HARD (17X32X3.5MM THK)	
M	36	1,2	8T-4133	10	NUT (M10X1.5 THD)	
M	37	2,3	8T-4137	19	BOLT (M10X1.5X20MM)	
M	38	2	8T-4182	4	BOLT (M10X1.5X45MM)	
M	39	3	8T-4189	4	BOLT (M8X1.25X20MM)	
M	40	3	8T-4193	4	BOLT (M16X2X50MM)	
M	41	2	8T-4194	2	BOLT (M12X1.75X50MM)	
M	42	1,2,3	8T-4195	6	BOLT (M10X1.5X30MM)	
M	43	1	8T-4200	1	BOLT (M8X1.25X16MM)	
	44	2,3	8T-4222	10	WASHER-PLATED (11X32X2.5MM THK)	
	45	2	8T-4223	2	WASHER-HARD (13.5X25.5X3MM THK)	
	46	1,3	8T-4224	5	WASHER-HARD (8.8X16X2MM THK)	
	47	2	8T-4226	4	WASHER-PLATED (10.5X45X3MM THK)	
M	48	3	8T-4908	4	BOLT (M8X1.25X25MM)	
	49	1	9M-8406	1	CLIP	
M	50	1	9X-8482	2	SETSCREW-SOCKET (M12X1.75X70MM)	

D-ORDER BY THE METER  
E-ORDER BY THE CENTIMETER  
M-METRIC PART

# COOLING SYSTEM

185-1015 RADIATOR GP (contd.)

101855167



REFER TO ALL ILLUSTRATIONS OF THIS GROUP FOR AUXILIARY VIEWS

SECTION D-D

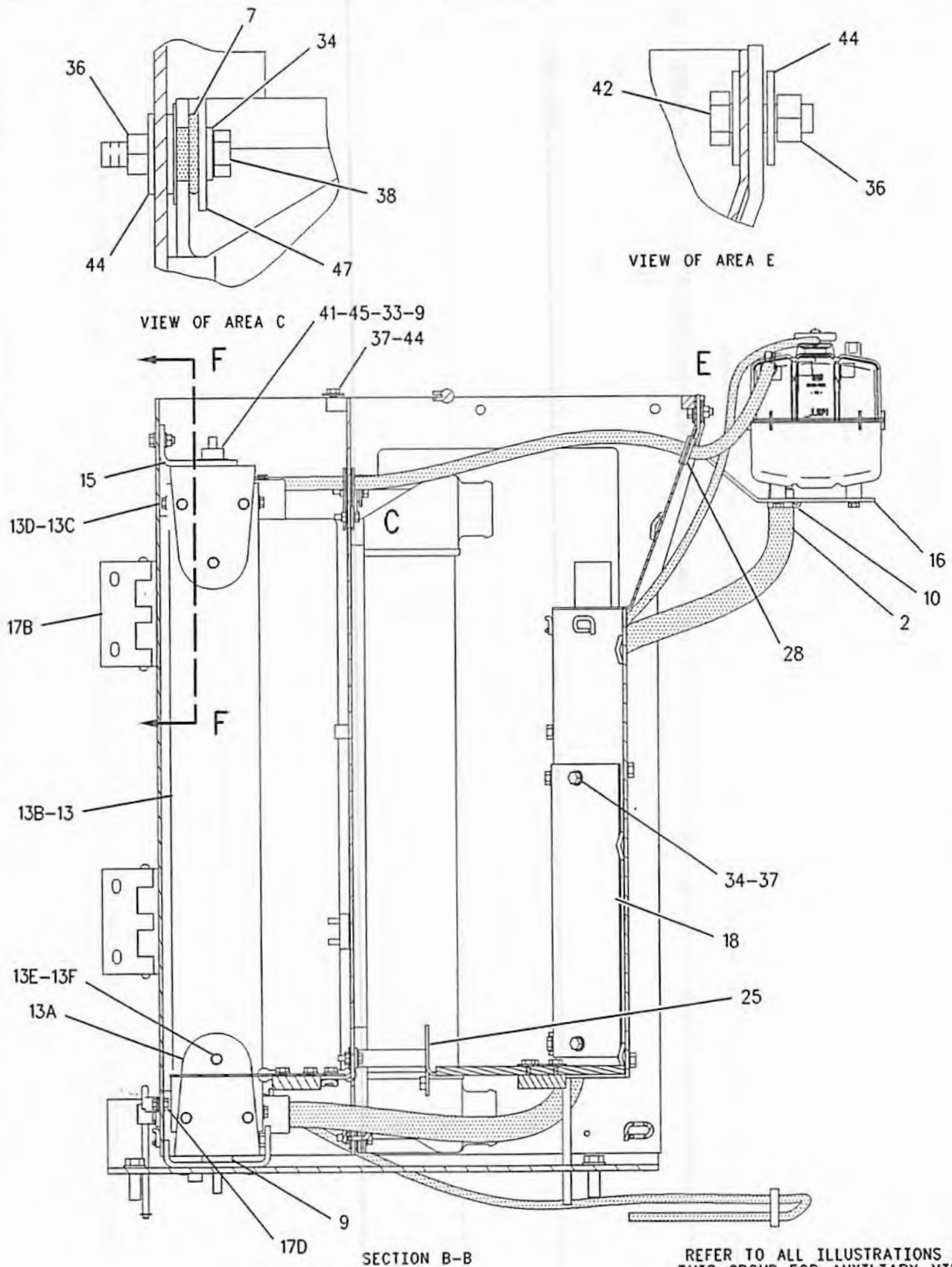
GRAPHIC #1

g00946584

# COOLING SYSTEM

185-1015 RADIATOR GP (contd.)

i01855167



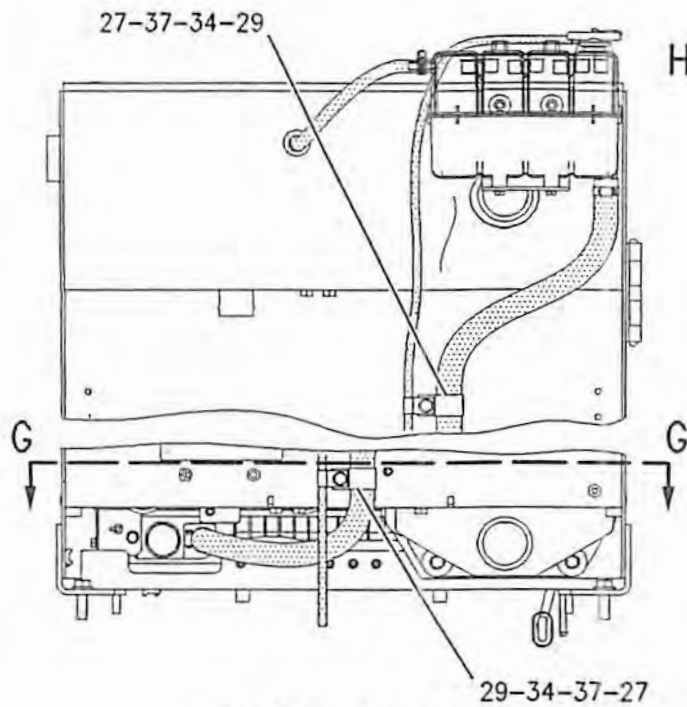
GRAPHIC #2

g00946585

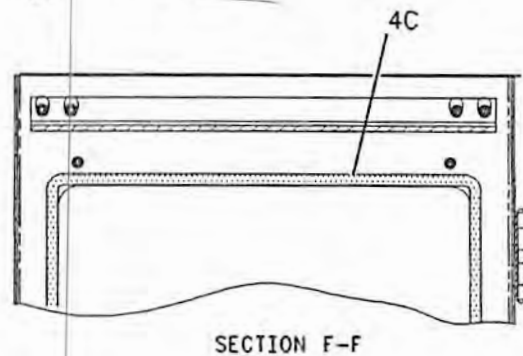
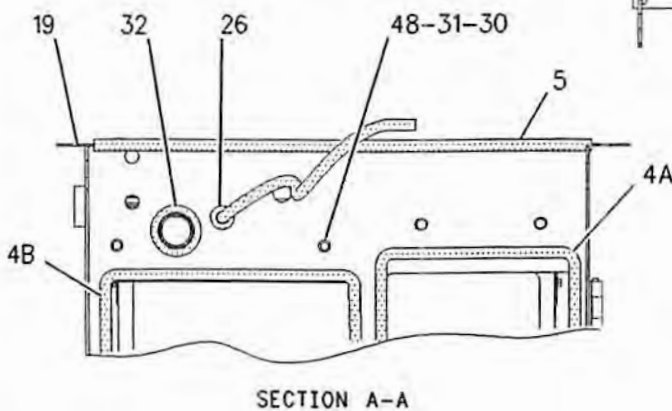
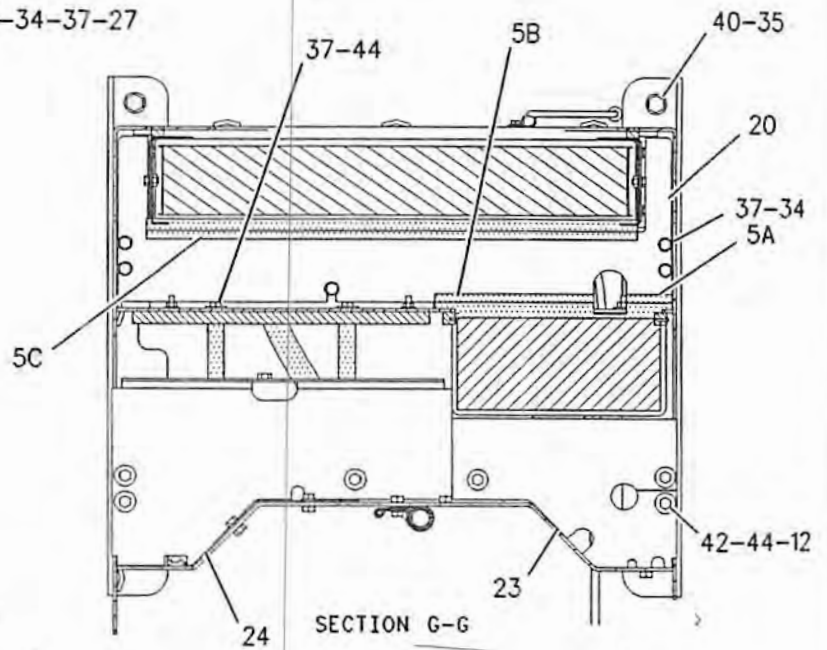
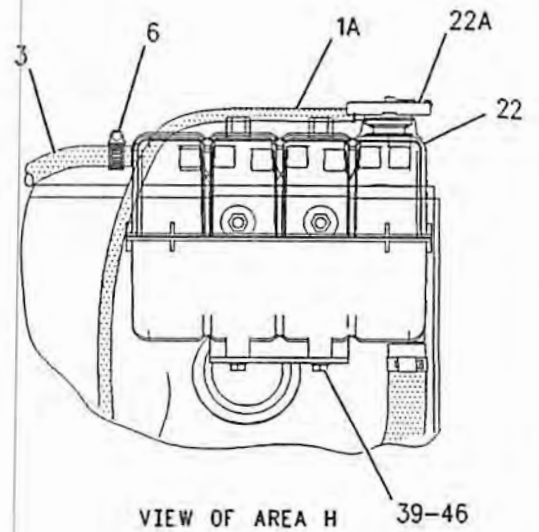
# COOLING SYSTEM

185-1015 RADIATOR GP (contd.)

101855167



FRONT VIEW



GRAPHIC #3

g0094658