

LUBRICATION SYSTEM

221-5290 FILTER GP-ENGINE OIL

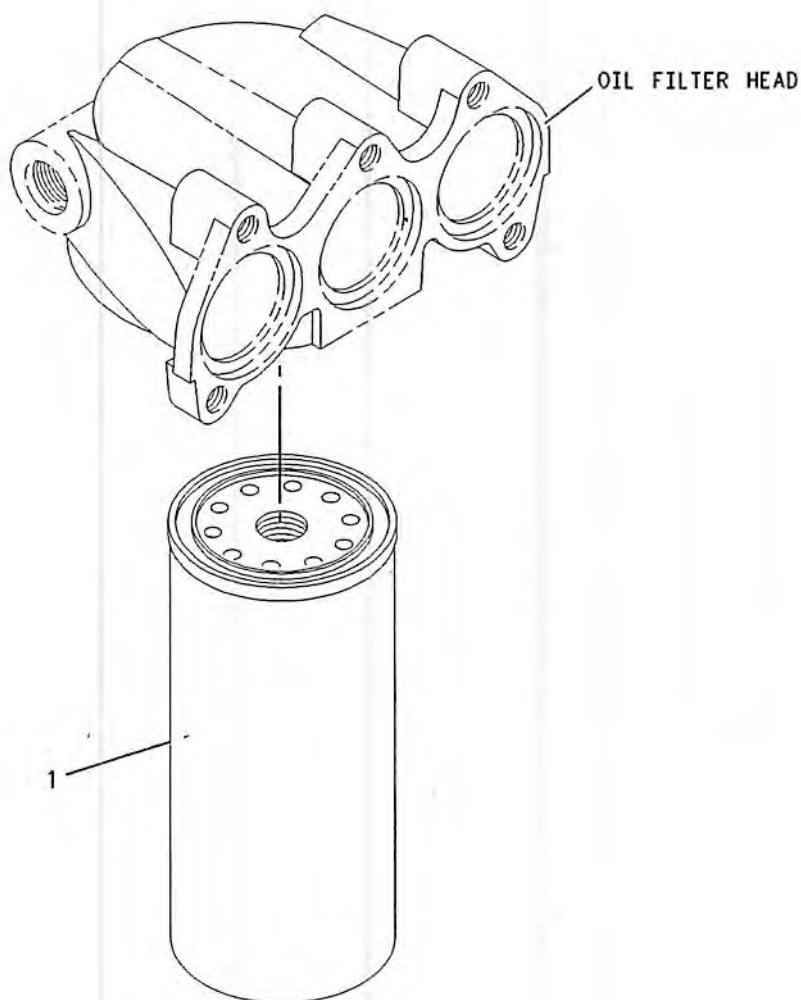
S/N: CPT1-UP

PART OF 206-2744 ENGINE AR-PRIMARY

SMCS-1306, 1308

i01725121

| NOTE | REF NO | GRAPHIC REF | PART NUMBER | QTY | PART NAME | | | | | | SEE PAGE |
|------|-----------|----------------|-------------|-----|----------------------|---|---|---|---|-------------------|-------------|
| | | | | | 1 | 2 | 3 | 4 | 5 | 6 (PRODUCT LEVEL) | |
| | 1 | 1 | 1R-0739 | 1 | FILTER AS-ENGINE OIL | | | | | | |



GRAPHIC #1

g00887435

LUBRICATION SYSTEM

186-2348 GAUGE GP-OIL LEVEL (DIPSTICK)

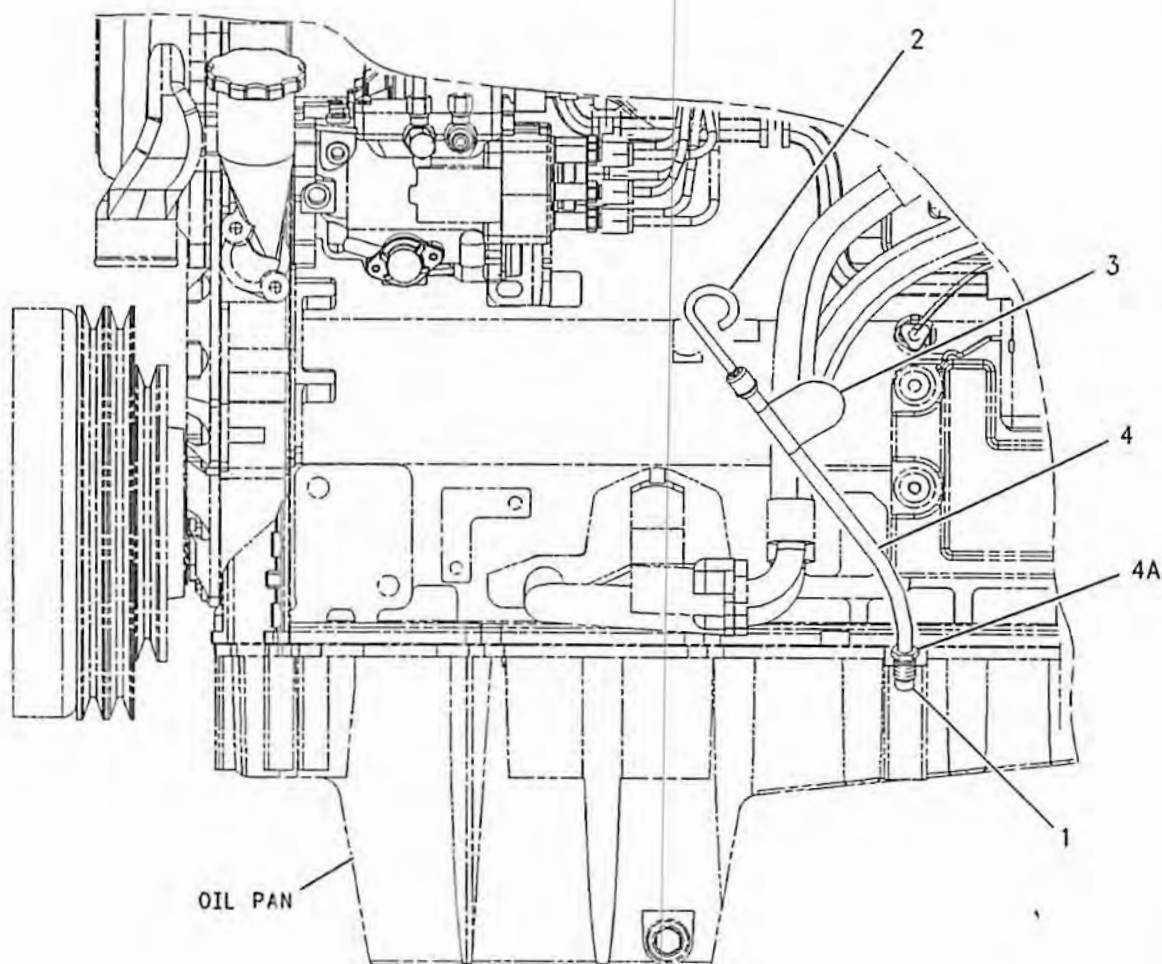
S/N: RTA1-UP; RBB1-UP

PART OF 216-8963 INSTALLATION AR-ENGINE

SMCS-1326

i01812063

| NOTE | REF NO | GRAPHIC REF | PART NUMBER | QTY | PART NAME | | | | | | SEE PAGE |
|------|--------|-------------|-------------|-----|----------------------------|---|---|---|---|-------------------|----------|
| | | | | | 1 | 2 | 3 | 4 | 5 | 6 (PRODUCT LEVEL) | |
| | 1 | 1 | 6I-1497 | 1 | SEAL | | | | | | |
| | 2 | 1 | 166-3988 | 1 | GAUGE-OIL LEVEL (DIPSTICK) | | | | | | |
| | 3 | 1 | 166-3990 | 1 | FILM-INFORMATION | | | | | | |
| | 4 | 1 | 166-3989 | 1 | TUBE AS-OIL GAUGE | | | | | | |
| | 4A | 1 | 6I-4079 | 1 | NUT | | | | | | |



LEFT SIDE VIEW

GRAPHIC #1

g00924573

LUBRICATION SYSTEM

220-6148 PUMP GP-ENGINE OIL

S/N: CPT1-UP

PART OF 206-2744 ENGINE AR-PRIMARY

SMCS-1304, 1315

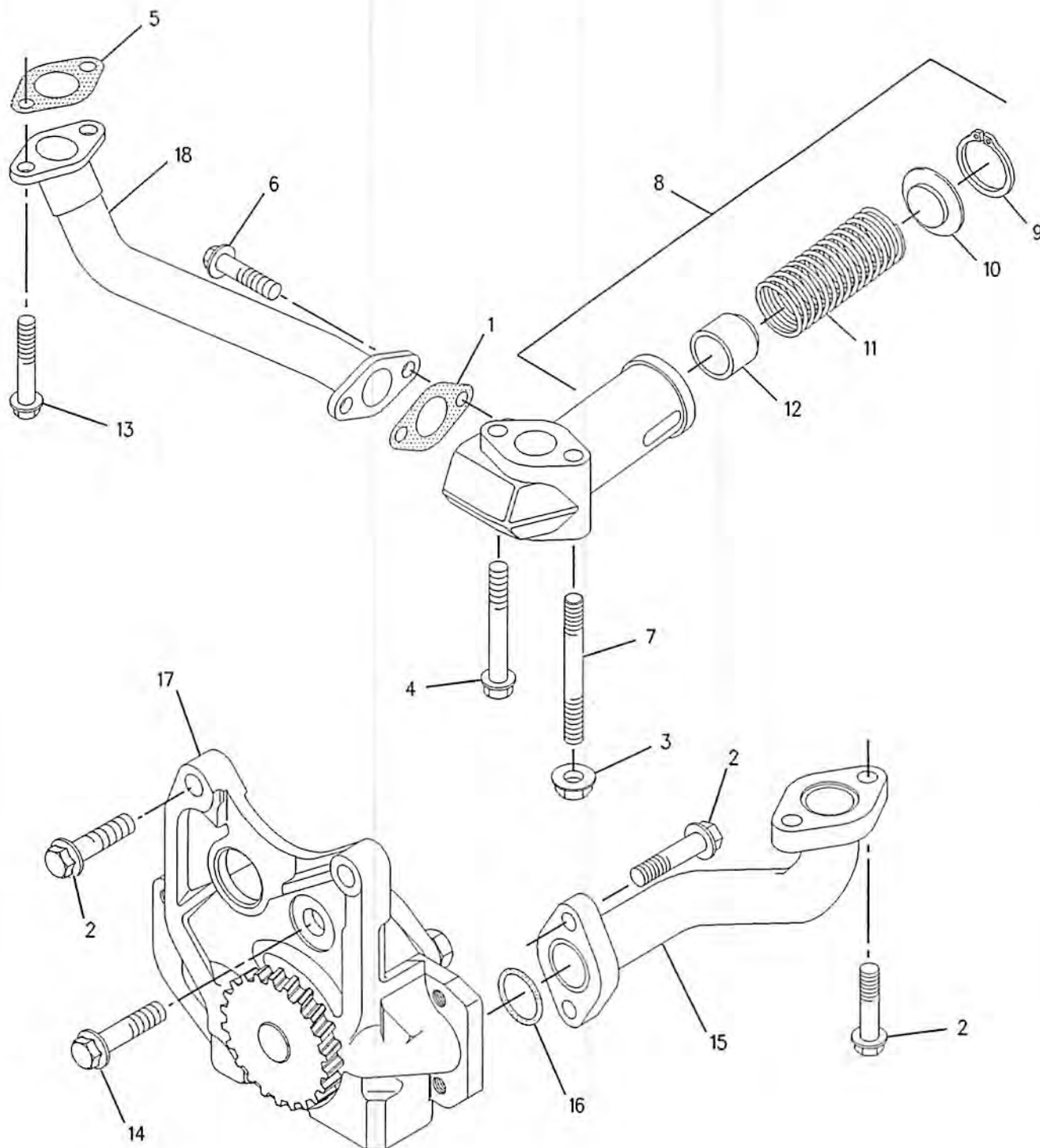
i01725189

| NOTE | REF NO | GRAPHIC REF | PART NUMBER | QTY | PART NAME | | | | | | SEE PAGE |
|------|-----------|----------------|-------------|-----|---------------------|---|---|---|---|-------------------|-------------|
| | | | | | 1 | 2 | 3 | 4 | 5 | 6 (PRODUCT LEVEL) | |
| | 1 | 1 | 5C-1796 | 1 | GASKET | | | | | | |
| | 2 | 1 | 6I-0260 | 6 | BOLT (M8X1.25X25MM) | | | | | | |
| | 3 | 1 | 6I-0291 | 1 | NUT (M8X1.25) | | | | | | |
| | 4 | 1 | 6I-4374 | 1 | BOLT | | | | | | |
| | 5 | 1 | 067-6933 | 1 | GASKET | | | | | | |
| | 6 | 1 | 106-8916 | 2 | BOLT (M6X16MM) | | | | | | |
| | 7 | 1 | 112-2370 | 1 | STUD | | | | | | |
| | 8 | 1 | 112-7702 | 1 | HOUSING AS | | | | | | |
| | 9 | 1 | 6I-0787 | 1 | RING-RETAINING | | | | | | |
| | 10 | 1 | 7W-4648 | 1 | SEAT-SPRING | | | | | | |
| | 11 | 1 | 7W-4650 | 1 | SPRING | | | | | | |
| | 12 | 1 | 7W-4782 | 1 | PLUNGER | | | | | | |
| | 13 | 1 | 112-7704 | 2 | BOLT | | | | | | |
| | 14 | 1 | 124-3815 | 1 | BOLT (M8X16X1.25MM) | | | | | | |
| | 15 | 1 | 183-6318 | 1 | TUBE AS | | | | | | |
| | 16 | 1 | 189-5601 | 1 | SEAL-O-RING | | | | | | |
| | 17 | 1 | 216-8625 | 1 | PUMP AS-ENGINE OIL | | | | | | |
| | 18 | 1 | 220-6151 | 1 | TUBE-OIL | | | | | | |

LUBRICATION SYSTEM

220-6148 PUMP GP - ENGINE OIL (contd.)

i01725189



LUBRICATION SYSTEM

140-8911 VALVE GP-FLUID SAMPLING

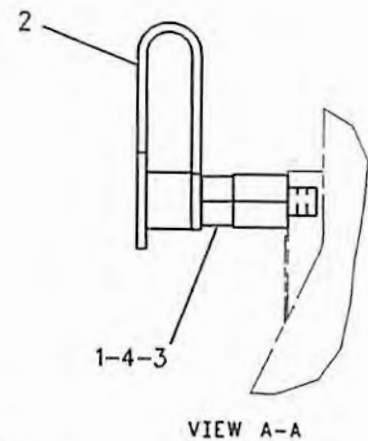
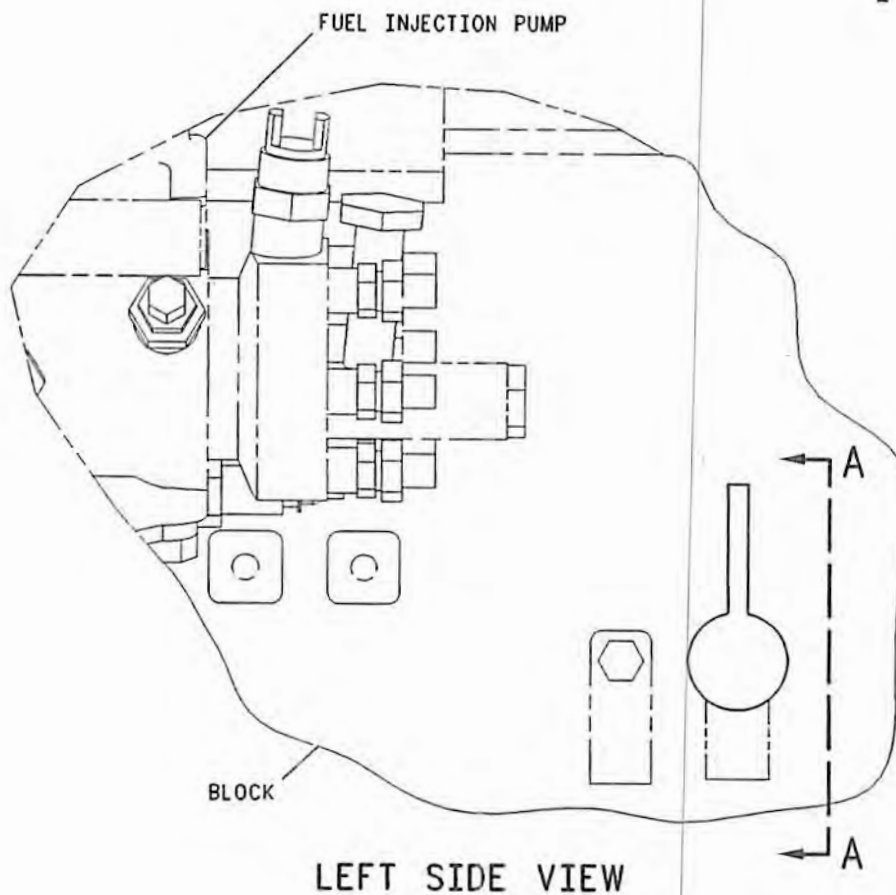
S/N: RTA1-UP; RBB1-UP

PART OF 216-8963 INSTALLATION AR-ENGINE

SMCS-7542

i01812053

| NOTE | REF NO | GRAPHIC REF | PART NUMBER | QTY | PART NAME | | | | | | SEE PAGE |
|------|--------|-------------|-------------|-----|--------------------------------------|---|---|---|---|-------------------|----------|
| | | | | | 1 | 2 | 3 | 4 | 5 | 6 (PRODUCT LEVEL) | |
| | 1 | 1 | 6V-7529 | 1 | ADAPTER | | | | | | |
| | 2 | 1 | 8C-3445 | 1 | CAP-DUST (OIL SAMPLING VALVE) | | | | | | |
| | 3 | 1 | 8C-3446 | 1 | VALVE GP-FLUID SAMPLING (ENGINE OIL) | | | | | | |
| | 4 | 1 | 3J-7354 | 1 | SEAL-O-RING | | | | | | |



GRAPHIC #1

g0061653