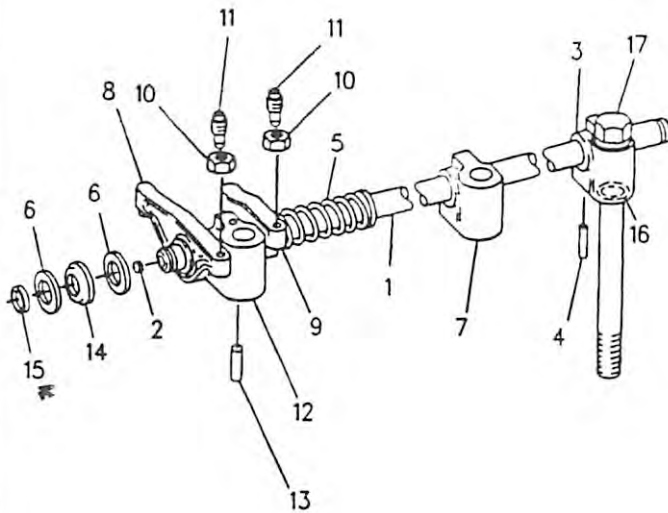


BASIC ENGINE

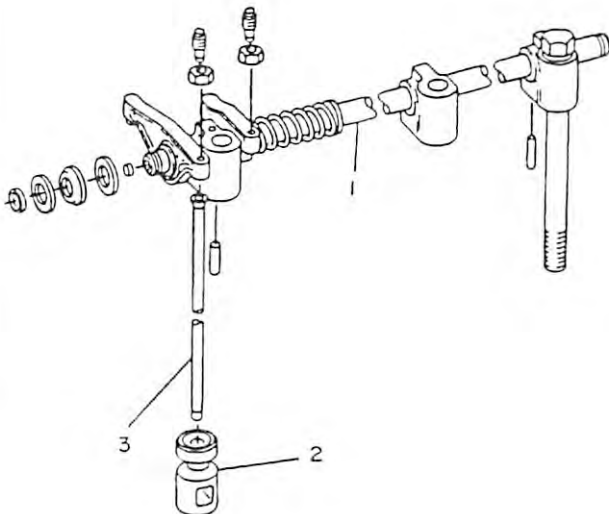


NOTE	REF NO	PART NUMBER	QTY	PART NAME
	1	8N3251	1	SHAFT-ROCKER ARM
	2	6V3508	2	PLUG-CUP
	3	3K8460	1	PLUG
	4	7C7011	1	BRACKET-SHAFT
	5	5M4606	1	DOWEL
	6	4B4910	5	SPRING
	7	9M9886	13	WASHER
	8	5S5879	4	BRACKET-SHAFT
	9	8N3325	6	ROCKER ARM GP (EXHAUST)
	10	8N3327	6	ROCKER ARM GP (INLET)
	11	713	1	(EACH ARM GP INCLUDES)
	12	917	1	NUT-FULL (3/8-24 THD)
	13	8S1499	1	SCREW-ROCKER
	14	1L5072	1	ADJUSTMENT
	15	7N0550	1	BRACKET AS-SHAFT
	16	9H1113	2	DOWEL
	17	8M4448	2	WASHER-SPRING
	18	1B7709	2	RING-RETAINER
	19	2S0736	1	SEAL-O-RING
	20		1	BOLT (5/8-11X8IN)
	21		1	WASHER-HARD

R-602929 CP

1102

7C7013 VALVE MECHANISM GP
Part Of 7N8026 Valve Mechanism



NOTE	REF NO	PART NUMBER	QTY	PART NAME
CY	1	7C7013	1	VALVE MECHANISM GP
	2	7S3161	12	LIFTER-VALVE
	3	5S5918	12	PUSHROD-VALVE

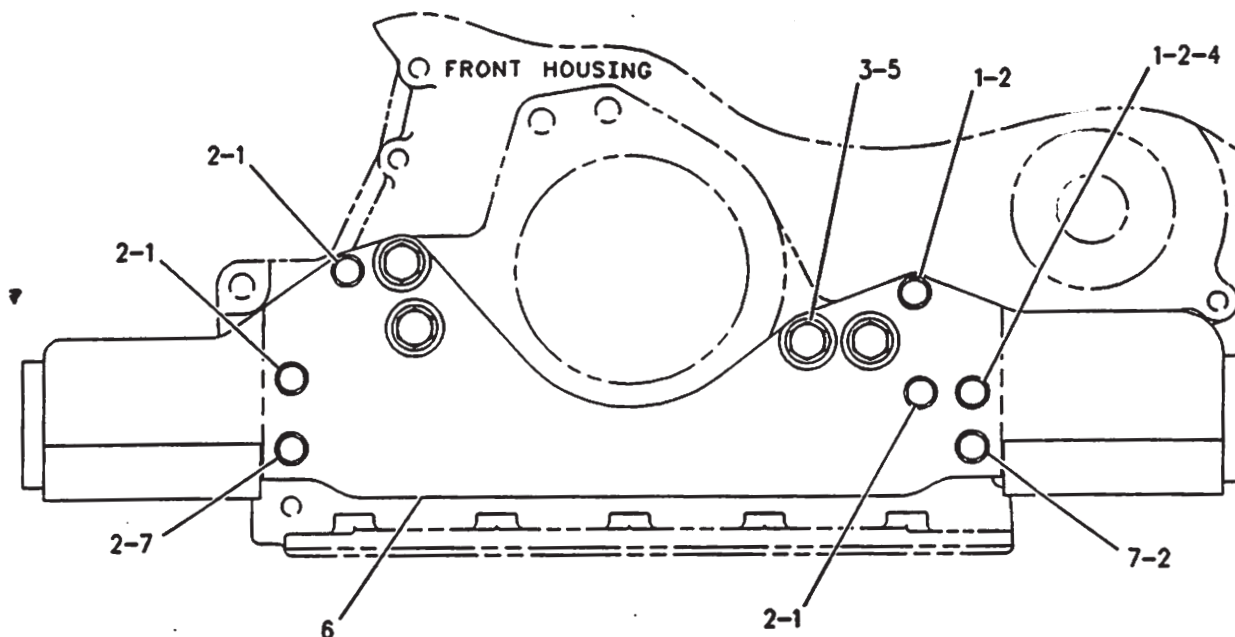
C-CHANGE FROM PREVIOUS TYPE
Y-SEPARATE ILLUSTRATION

B-471215 EP

1102

7N8026 VALVE MECHANISM GP
7C7013-Page 31

BASIC ENGINE

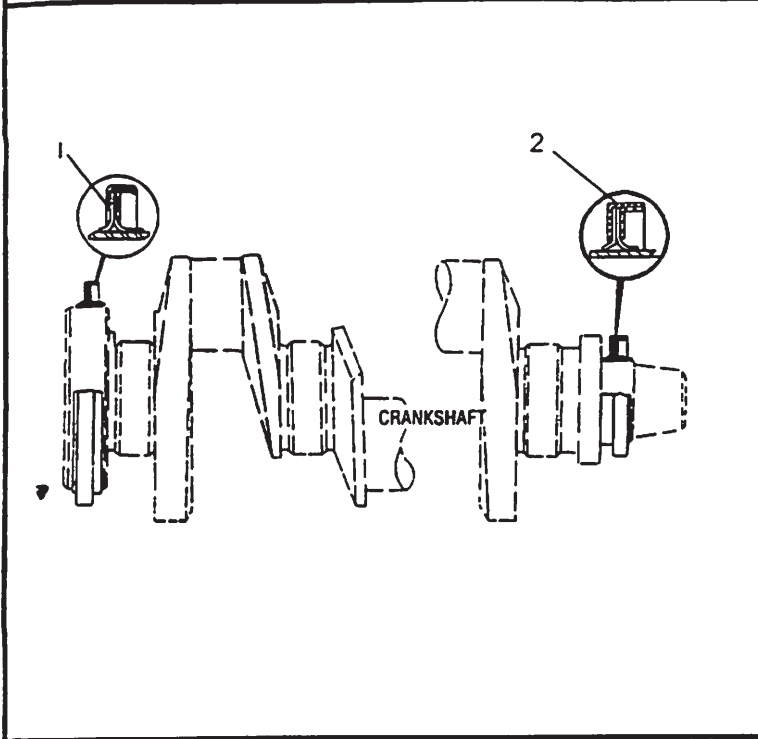


FRONT VIEW

NOTE	REF NO	PART NUMBER	QTY	PART NAME	NOTE	REF NO	PART NUMBER	QTY	PART NAME
	1	OS1619	5	BOLT					
	2	5M2894	8	WASHER					
	3	9X8874	4	BOLT					
	4	9S8752	1	NUT-FULL					
	5	5P8245	4	WASHER					
	6	7W8319	1	SUPPORT AS-ENGINE					
	7	OS1588	2	BOLT					

F-571171 EP

BASIC ENGINE



NOTE	REF NO	PART NUMBER	QTY	PART NAME
C	1	4W0452	1	SEAL GP-CRANKSHAFT
	2	9Y9895	1	SEAL GP-CRANKSHAFT

C-CHANGE FROM PREVIOUS TYPE

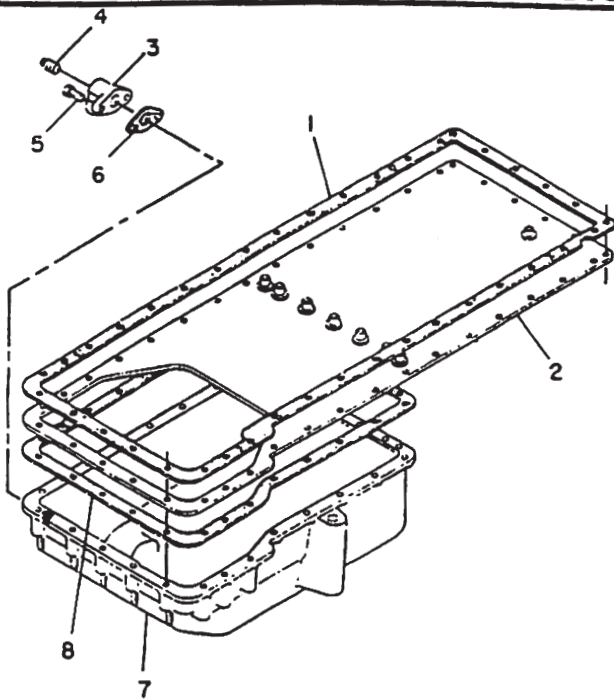
R- 709065 P

R - 709065 P

1160

2P6224 SEAL GP-CRANKSHAFT

BASIC ENGINE

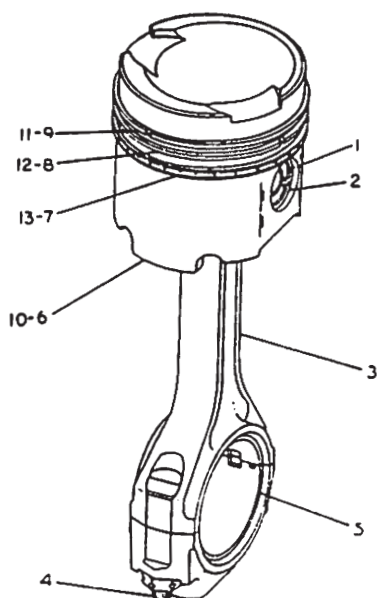


NOTE	REF NO	PART NUMBER	QTY	PART NAME
	1	1290357	1	GASKET
	2	2P1738	1	PLATE AS-OIL PAN
		1S5304	1	LUG
		6J2237	7	BOSS-WELD
	3	1135336	1	ADAPTER AS-DRAIN
		8N6849	1	ADAPTER-PLUG
	4	1261683	1	PLUG-DRAIN
	5	3B1915	2	BOLT (3/8-16X1.375IN)
	6	8N6854	1	GASKET-ADAPTER
	7	2Y9326	1	PAN-OIL
	8	8S1965	1	GASKET-OIL PAN

M- 692408 P

1302

2P9647 PAN GP-OIL



NOTE	REF NO	PART NUMBER	QTY	PART NAME
	1	7N9805	1	PIN-PISTON
	2	1S9543	2	RETAINER-PIN
R	3	8N1721	1	ROD AS-CONNECTING
		8N1849	1	BEARING-CONNECTING ROD
	4	1P9956	2	BOLT-CONNECTING ROD
		5S6348	2	NUT
C	5	4W5739	1	BEARING-CONNECTING ROD (STD)
AC		8N8221	1	BEARING-CONNECTING ROD (.25MM)UNDERSIZE)
AC		8N8222	1	BEARING-CONNECTING ROD (.51MM)UNDERSIZE)
AC		8N8223	1	BEARING-CONNECTING ROD (.76MM)UNDERSIZE)
	6	1290359	1	BODY AS-PISTON
	7	7E6047	1	RING-PISTON (OIL)
	8	5S6750	1	RING-PISTON (INTERMEDIATE)
	9	9S3029	1	RING-PISTON (TOP)
AC	10	2W6091	1	RING GP-PISTON
	11	9S3029	1	RING-PISTON
	12	5S6750	1	RING-PISTON
	13	7E6047	1	RING-PISTON (OIL)

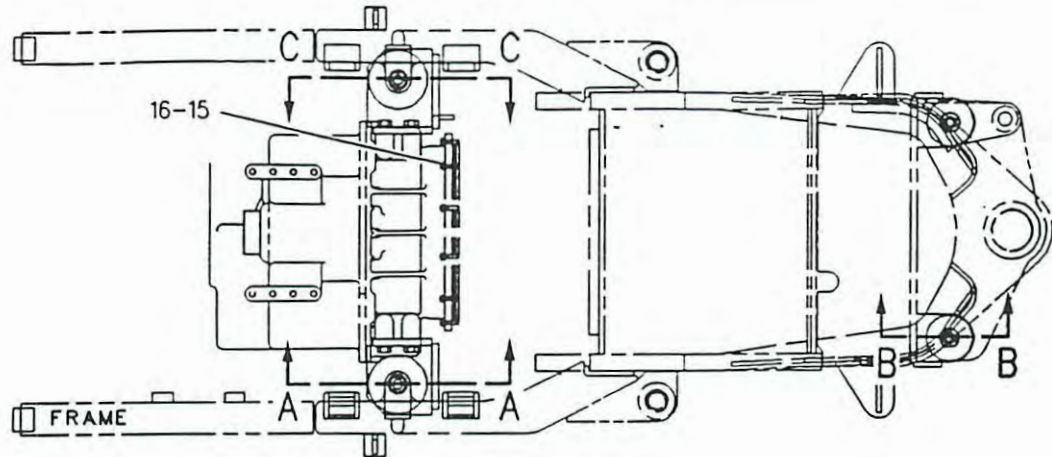
A-NOT PART OF THIS GROUP
C-CHANGE FROM PREVIOUS TYPE
R-REMFG PART MAY BE AVAILABLE

B- 666350 P

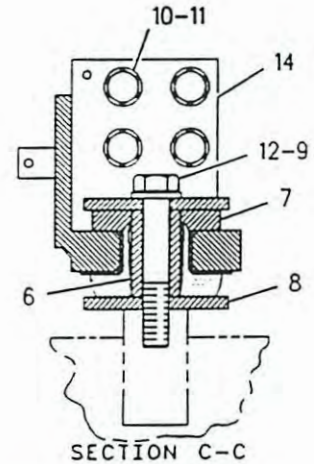
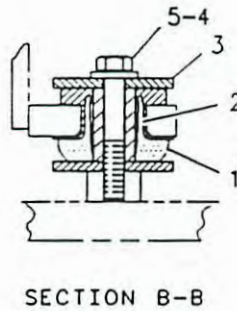
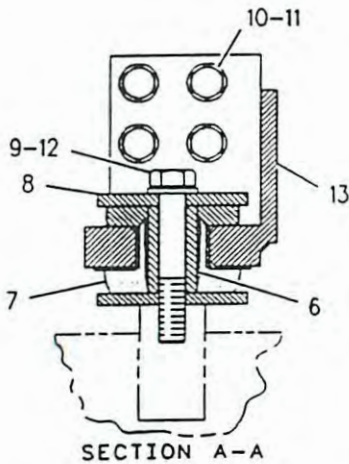
1225

1W6588 PISTON & ROD GP

BASIC ENGINE



TOP VIEW

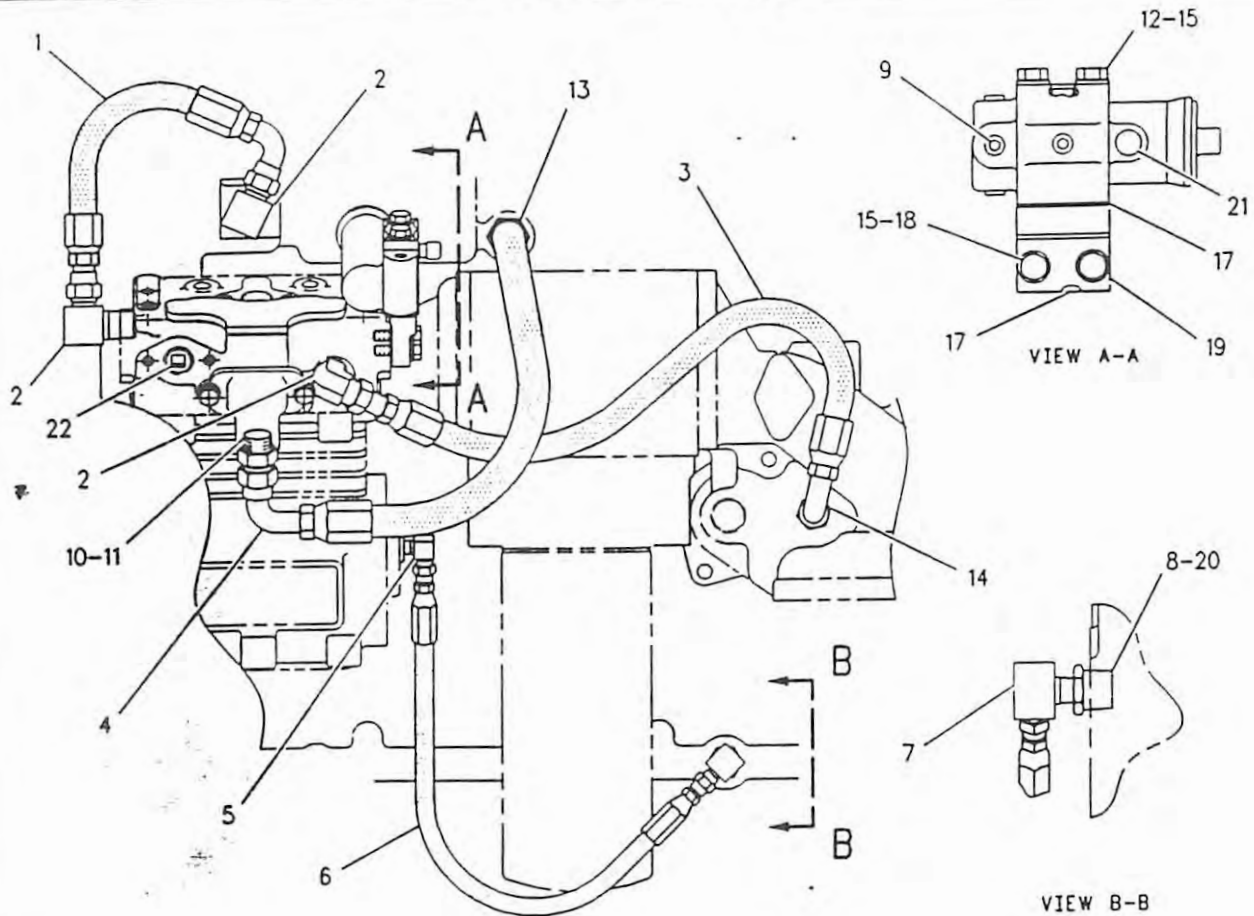


NOTE	REF NO	PART NUMBER	QTY	PART NAME	NOTE	REF NO	PART NUMBER	QTY	PART NAME
M	1	9W9920	2	MOUNT AS					
	2	9W6582	2	SLEEVE					
	3	9W6584	4	WASHER (10MM THK)					
	4	8T4994	2	WASHER (3.5MM THK)					
	5	7X0375	2	BOLT (3/4-10X5IN)					
	6	9W7385	2	SLEEVE					
	7	6Y9960	2	MOUNT AS					
	8	9W7388	4	WASHER					
	9	8T5361	2	WASHER (5MM THK)					
	10	8T6430	8	BOLT (M20X2.5X50MM)					
	11	8T4123	8	WASHER-PLATED (3.5MM THK)					
	12	1J5929	2	BOLT (1-8X6IN)					
	13	8W5897	1	SUPPORT AS-RH					
		8W5820	1	PLATE					
		8W5894	1	PLATE					
		8X8794	1	PLATE					
	14	8W5896	1	SUPPORT AS-LH					
		8G2613	1	PLATE					
		8W5895	1	PLATE					
		8X8506	1	PLATE					
		8X8507	1	PLATE					
	15	5S7382	12	BOLT (3/8-16X1.375IN)					
	16	8T4896	12	WASHER-HARD (2.5MM THK)					

M-METRIC PART

F-629795 CP

BASIC ENGINE

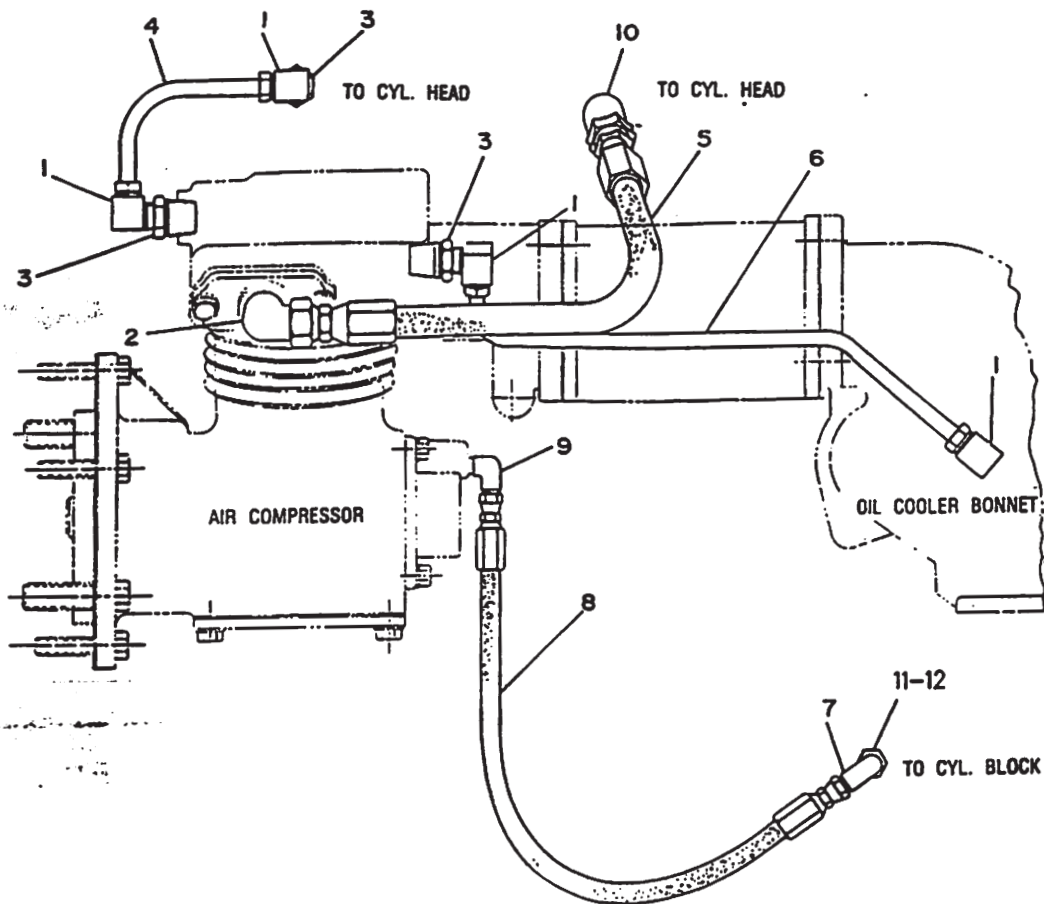


NOTE	REF NO	PART NUMBER	QTY	PART NAME	NOTE	REF NO	PART NUMBER	QTY	PART NAME
I	1	9L5810	1	HOSE AS-END					
	2	2N3378	3	ELBOW					
I	3	9L5452	1	HOSE AS-END					THE FOLLOWING KITS
I	4	1Y0684	1	HOSE AS					IS AVAILABLE:
	5	2N1287	1	ELBOW-FLARED			9M0402	1	KIT-GOVERNOR OVERHAUL
I	6	9N3040	1	HOSE AS-END					
	7	6K1972	1	ELBOW-FLARED (1/4 NPT)					
	8	3B7764	1	BUSHING-TERMINAL					
	9	8T6757	5	PLUG-PIPE					
				(1/8-27 NPTF THD)					
	10	9M4584	1	CONNECTOR-FLARED					
	11	2M9780	1	SEAL-O-RING (19.18MM ID)					
	12	1D4541	2	BOLT (5/16-18X3IN)					
	13	9M6522	1	CONNECTOR-FLARED					
	14	8M0755	1	CONNECTOR					
	15	9M1974	4	WASHER-HARD					
	16	6I1240	1	GOVERNOR AS					
		2S2923	1	COVER-GOVERNOR					
	17	6L1883	2	GASKET-GOVERNOR					
	18	4B3388	2	BOLT (5/16-18X1.125IN)					
	19	1363166	1	ADAPTER-GOVERNOR					
	20	3P1823	1	ADAPTER-PIPE					
	21	5F5434	1	VENT AS					
	22	8T6762	1	PLUG-PIPE					

I-SEE HOSE FABRICATION GUIDE

F-706446 CP

BASIC ENGINE



NOTE	REF NO	PART NUMBER	QTY	PART NAME	NOTE	REF NO	PART NUMBER	QTY	PART NAME
	1	5K9237	4	ELBOW-FLARED					
	2	321269	1	ELBOW-FLARED					
	3	3B7255	3	BUSHING-TERMINAL					
	4	7W9553	1	TUBE AS-OUTLET					
	5	4W1309	1	HOSE AS					
	6	7E6796	1	TUBE AS					
	7	6K1972	1	ELBOW-FLARED (1/4 NPT)					
	8	9N3040	1	HOSE AS-END					
	9	2N1287	1	ELBOW-FLARED					
	10	9L5254	1	ELBOW					
	11	3B7764	1	BUSHING-TERMINAL					
	12	3P1823	1	ADAPTER-PIPE					

B-USE AS REQUIRED
C-CHANGE FROM PREVIOUS TYPE
I-SEE HOSE FABRICATION GUIDE

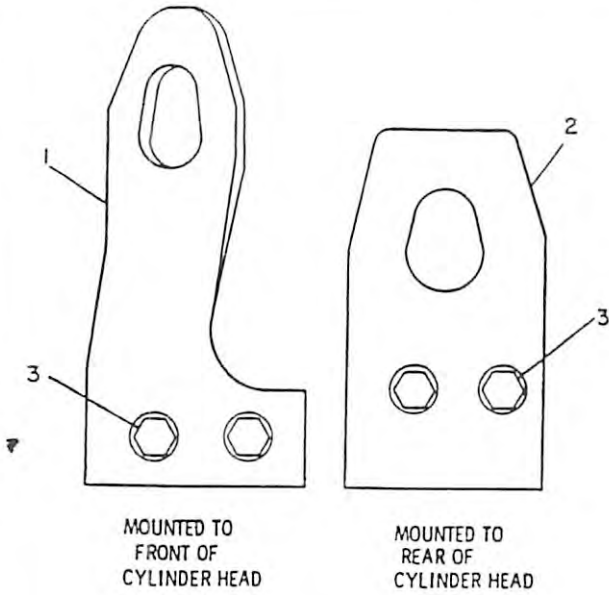
R-570970 EP

1803

7W8411 LINES GP-AIR COMPRESSOR
S/N 8MN1-459

Part Of 1162891 Installation Air-Engine

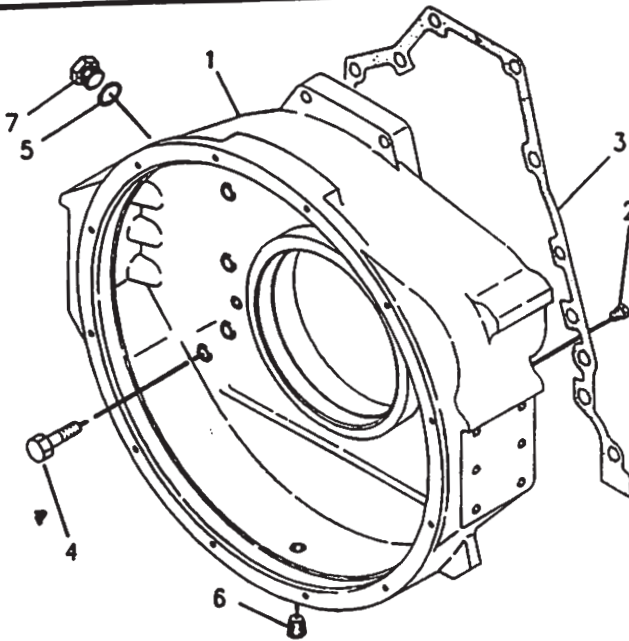
BASIC ENGINE



NOTE	REF NO	PART NUMBER	QTY	PART NAME
	1	1375314	1	PLATE-LIFTING
	2	8N8721	1	PLATE-LIFTING EYE
	3	OS1566	4	BOLT
		5P8247	4	WASHER-HARD

F - 650035 P

BASIC ENGINE

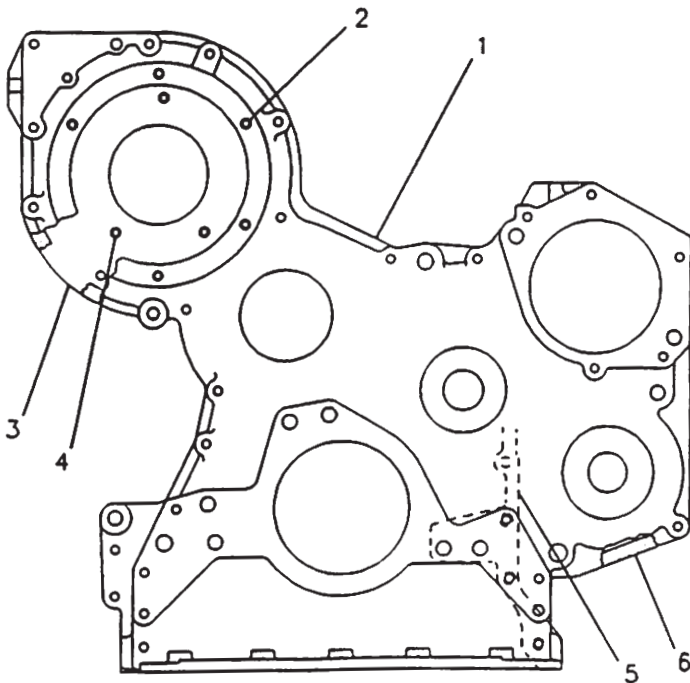


NOTE	REF NO	PART NUMBER	QTY	PART NAME
	1	7E9068	1	HOUSING-FLYWHEEL
	2	8T6765	1	PLUG-PIPE (1/4-18 NPTF THD)
	3	9H5921	1	GASKET-FLYWHEEL HOUSING
	4	OS1587	13	BOLT
	5	2A1162	1	GASKET
	6	8T6762	1	PLUG-PIPE
	7	5F0304	1	PLUG-DRAIN

R-632459 CP

1157

7E5681 HOUSING GP-FLYWHEEL



NOTE	REF NO	PART NUMBER	QTY	PART NAME
	1	8N0109	1	HOUSING AS-FRONT
	2	250042	6	STUD
C	3	1W7816	1	PLATE AS-FRONT
		1W7110	1	PLATE-FRONT
		5M6214	1	PLUG-PIPE
	4	6H0192	3	STUD
	5	8N0110	1	GASKET-FRONT PLATE
C	6	1W3900	1	GASKET

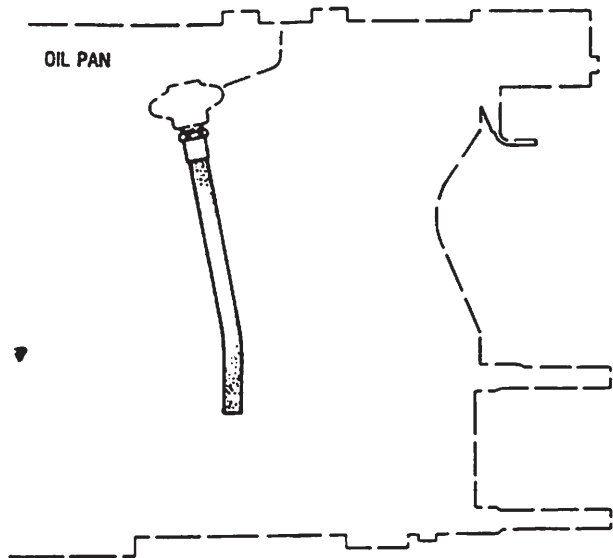
C-CHANGE FROM PREVIOUS TYPE

F-519017 EP

1162

8N0303 HOUSING GP-FRONT

BASIC ENGINE

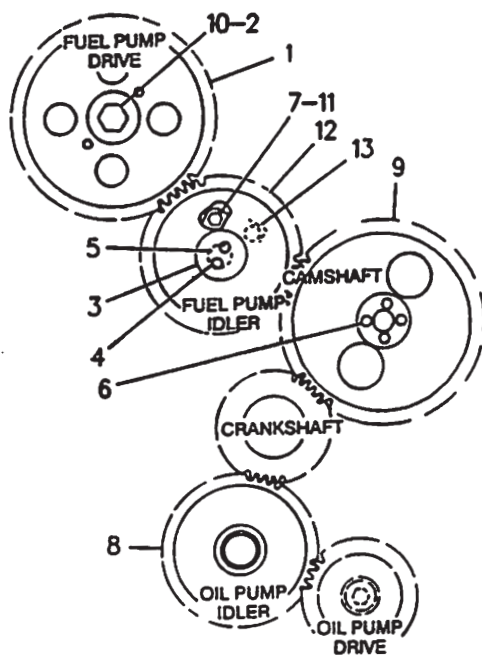


NOTE	REF NO	PART NUMBER	QTY	PART NAME
				NO SERVICEABLE PARTS

B-209856 EP

2P0698 HOSE AS-OIL DRAIN EXTENSION
Part Of 1350355 Installation Ar-Engine

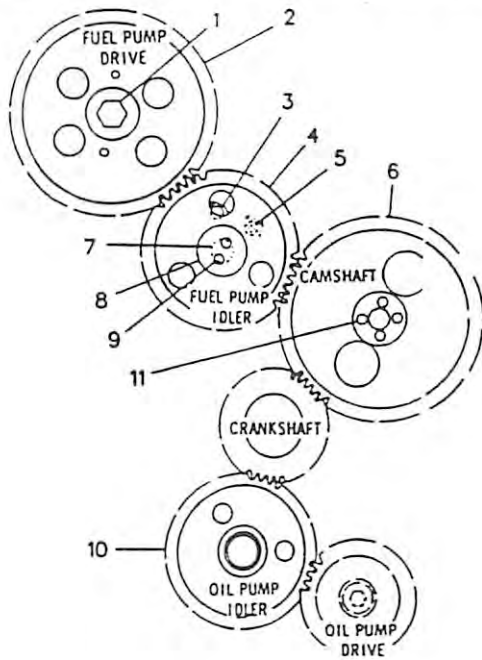
BASIC ENGINE



NOTE	REF NO	PART NUMBER	QTY	PART NAME
	1	1028636	1	GEAR-DRIVE (66 TEETH)
	2	7N2994	1	WASHER
	3	8N4960	1	PLATE-THRUST
	4	OS1618	2	BOLT
	5	1059772	1	SHAFT-DRIVE IDLER
	6	OS1748	4	BOLT
	7	5M2894	2	WASHER
	8	4P7828	1	GEAR AS-OIL IDLER (50 TEETH)
		2P1168	1	BEARING-SLEEVE
	9	4P7826	1	GEAR-CAMSHAFT (66 TEETH)
	10	1A1135	1	BOLT
	11	OS1594	2	BOLT
	12	1072206	1	GEAR AS-FUEL PUMP IDLER (27 TEETH)
		2S6692	1	BEARING-SLEEVE
	13	5B9079	1	NUT-JAM

R-574816 EP

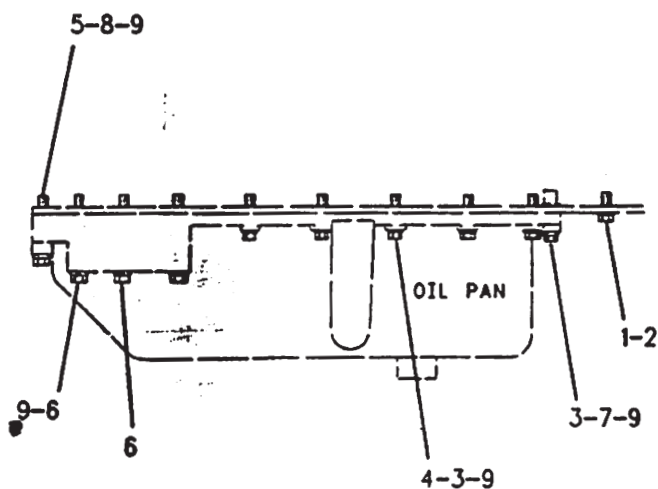
BASIC ENGINE



NOTE	REF NO	PART NUMBER	QTY	PART NAME
	1	1A1135	1	BOLT
		7N2994	1	WASHER
	2	7W0508	1	GEAR-FUEL PUMP DRIVE (80 TEETH)
	3	OS1594	2	BOLT
		5M2894	2	WASHER
C	4	1064497	1	GEAR AS-FUEL PUMP IDLER (57 TEETH)
		2S6692	1	BEARING-SLEEVE
	5	5B9079	1	NUT-JAM
	6	1W4402	1	GEAR-CAMSHAFT (80 TEETH)
C	7	1059772	1	SHAFT-DRIVE IDLER
	8	8N4960	1	PLATE-THRUST
	9	OS1618	2	BOLT
	10	7N4722	1	GEAR AS-IDLER (60 TEETH)
		2P1168	1	BEARING-SLEEVE
	11	OS1748	4	BOLT
C-CHANGE FROM PREVIOUS TYPE				

R-561130 EP

BASIC ENGINE



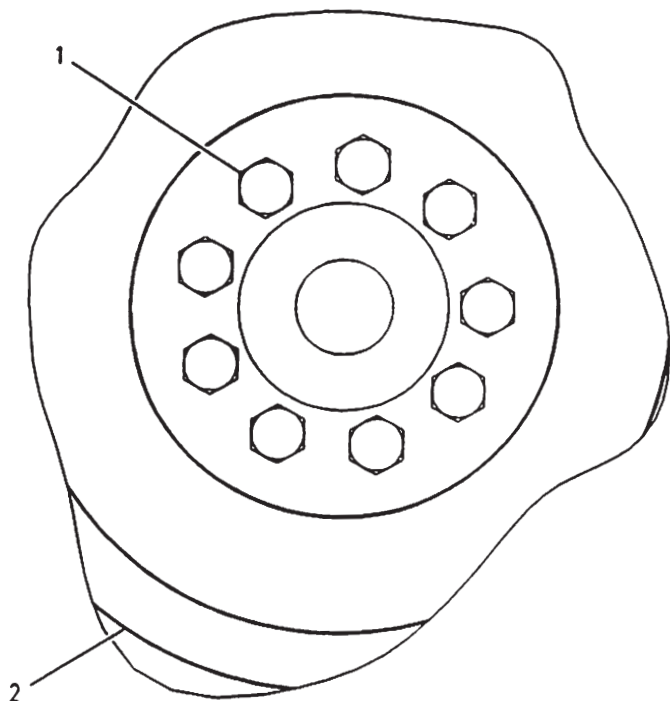
NOTE	REF NO	PART NUMBER	QTY	PART NAME
	1	308535	18	BOLT-LOCKING (3/8-16X.875IN)
	2	5M2894	18	WASHER (2.5MM THK)
B	3	OS1591	20	BOLT (3/8-16X1.5IN)
B	4	3B1915	13	BOLT (3/8-16X1.375IN)
B	5	OL1143	5	BOLT (3/8-16X2.5IN)
	6	OL1352	3	BOLT (3/8-16X3.25IN)
B	7	2A4639	7	BOLT (3/8-16X1.625IN)
B	8	OTO573	5	BOLT (3/8-16X2.75IN)
B	9	5M2894	28	WASHER

B-USE AS REQUIRED

R-713167 CP

1302

2P6200 FASTENER GP-OIL PAN



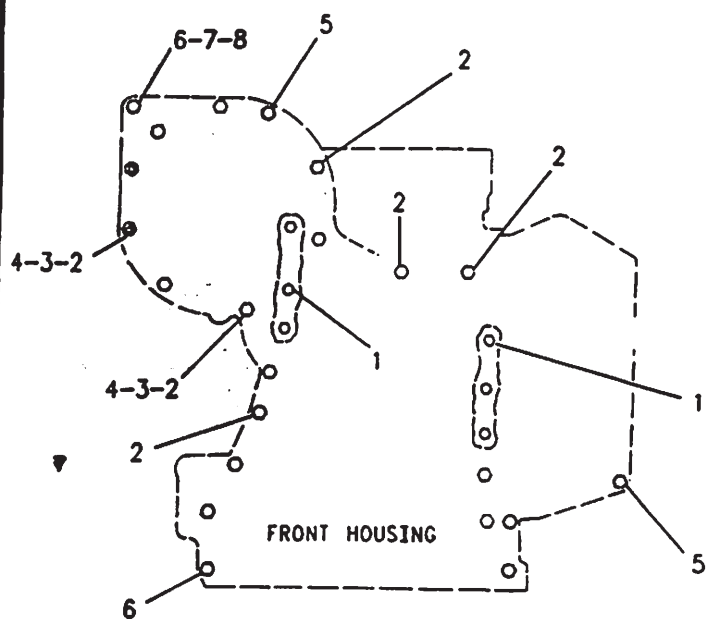
NOTE	REF NO	PART NUMBER	QTY	PART NAME
	1	OS1576	9	BOLT
	2	7E9067	1	FLYWHEEL AS
		7N9145	1	GEAR (130 TEETH)

F-571166 EP

1156

7E5680 FLYWHEEL GP

BASIC ENGINE



NOTE	REF NO	PART NUMBER	QTY	PART NAME
CJ	1	308535	6	BOLT-LOCKING
C	2	OL2070	15	BOLT
CB	3	5M2894	4	WASHER
	4	6V8801	4	NUT
	5	1C2251	2	BOLT
B	6	OL2070	5	BOLT
B	7	5M2894	4	WASHER
B	8	6V8801	4	NUT

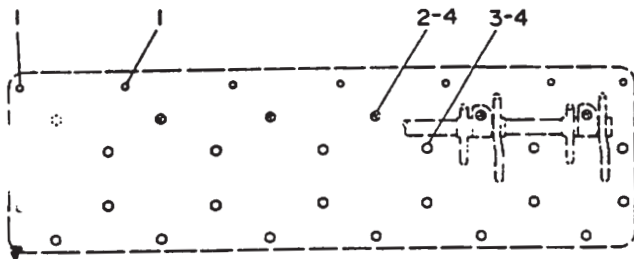
B-USE AS REQUIRED
C-CHANGE FROM PREVIOUS TYPE

R-603116 CP

1151

8N0872 FASTENER GP-FRONT HOUSING

BASIC ENGINE



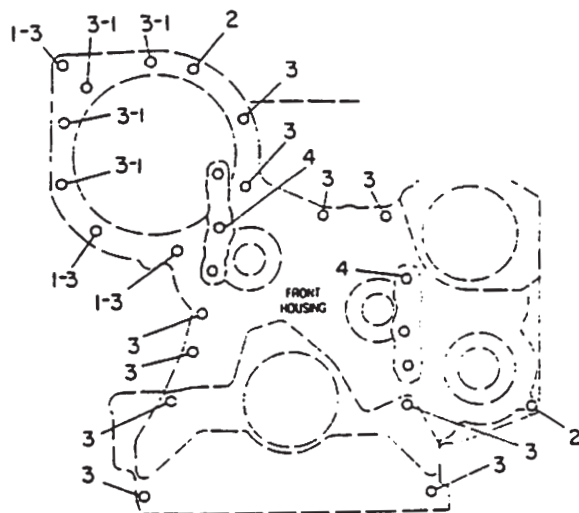
NOTE	REF NO	PART NUMBER	QTY	PART NAME
	1	589603	7	BOLT
C	2	187709	5	BOLT (LOCATION X)
B	3	104595	20	BOLT
C	4	250736	25	WASHER-HARD

B-USE AS REQUIRED
C-CHANGE FROM PREVIOUS TYPE

B-226521 EP

1100

7N9536 FASTENER GP-CYLINDER HEAD



NOTE	REF NO	PART NUMBER	QTY	PART NAME
	1	6V8801	7	NUT
		5M2894	7	WASHER
	2	1C2251	2	BOLT
C	3	0L2070	17	BOLT
	4	3E6914	6	BOLT

C-CHANGE FROM PREVIOUS TYPE

B- 683268 P

1151

1W3802 FASTENER GP-FRONT HOUSING

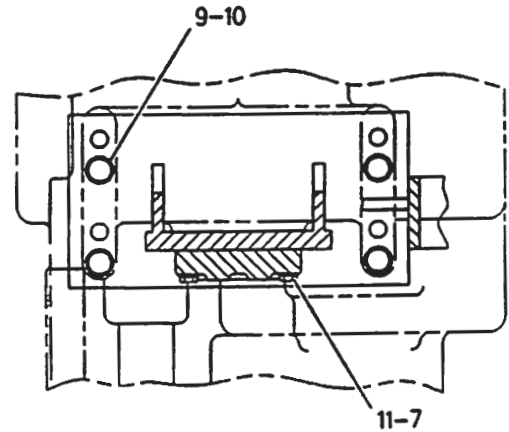
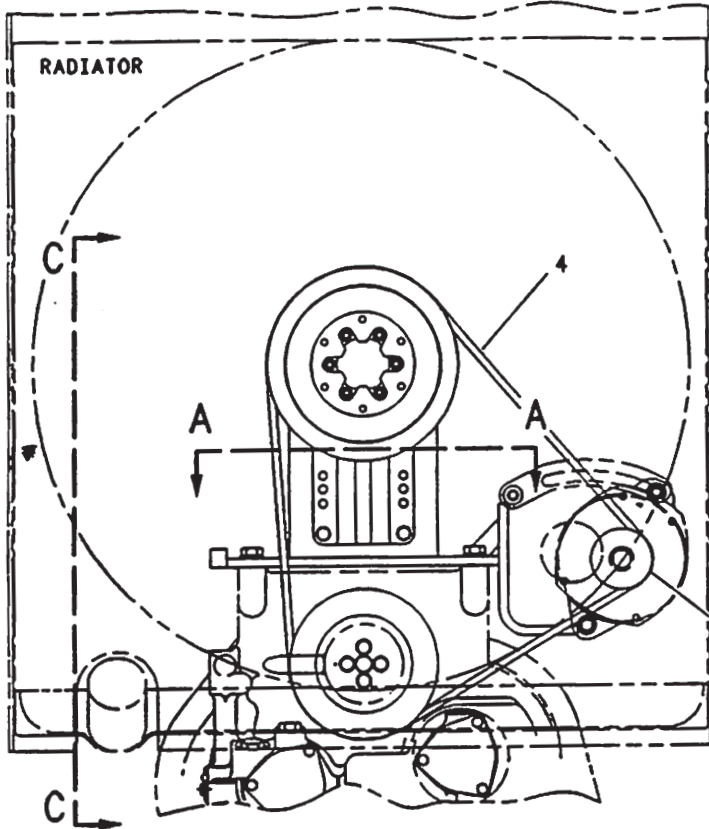
BASIC ENGINE

NOTE	REF NO	PART NUMBER	QTY	PART NAME	NOTE	REF NO	PART NUMBER	QTY	PART NAME
	1	8W5537	1	SUPPORT AS					
		1F5339	1	LUG					
		5H9394	1	BOSS					
M	2	8T4908	6	BOLT					
	3	1079575	1	PULLEY					
	4	1137795	1	V-BELT SET (INCLUDES 3 BELTS)					
	5	8X1805	1	PULLEY					
M	6	8T4196	4	BOLT					
	7	8T4121	8	WASHER					
	8	1079579	1	PULLEY					
	9	9X8257	4	WASHER					
M	10	7X2553	4	BOLT					
M	11	8T4185	4	BOLT					
M	12	5A3604	6	BOLT-SOCKET HEAD					
	13	8T4224	12	WASHER-HARD					
	14	7C8371	1	ADAPTER-FAN					
	15	7C8365	1	DRIVE GP-FAN					
	16	4W1203	2	CUP-ROLLER BEARING					
		4W1204	2	CONE-ROLLER BEARING					
	17	4W2042	1	SPACER (38.33 MM)					
	18	5S9062	1	SPACER (15.88 MM)					
M	19	6V8004	1	BOLT					
	20	6V9748	1	SEAL-LIP					
	21	7C8366	1	BRACKET AS					
	22	7C8369	1	HUB					
	23	7C8370	1	CAP					
	24	7C8634	1	PLATE					

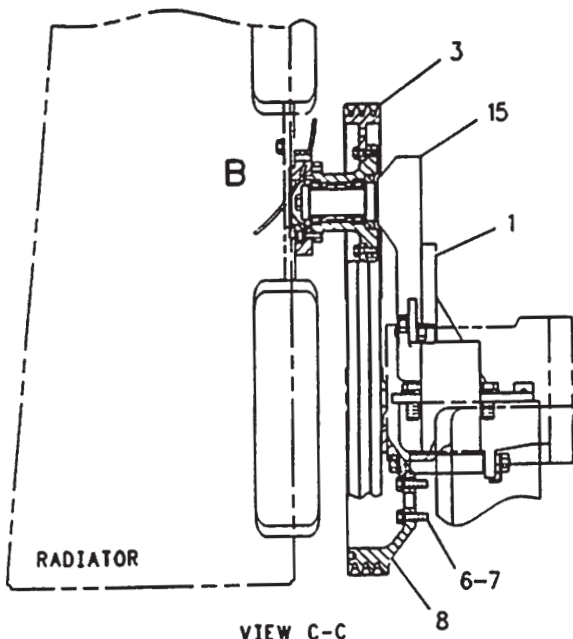
M-METRIC PART

601178 CP

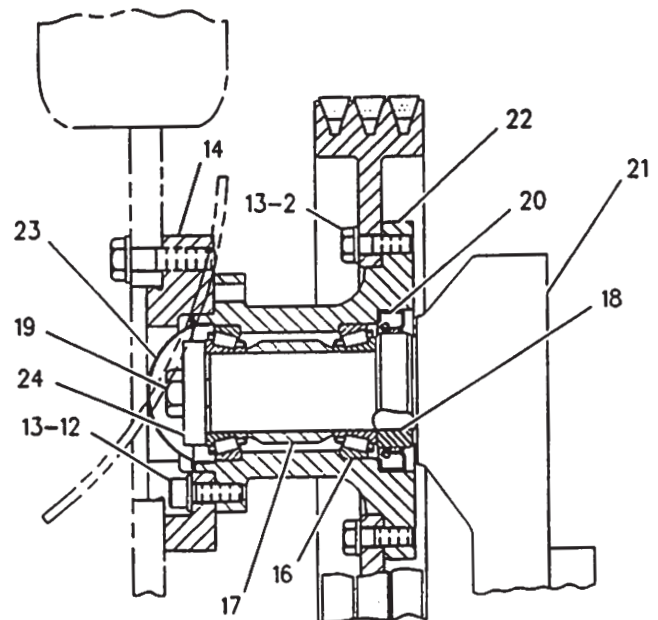
BASIC ENGINE



SECTION A-A



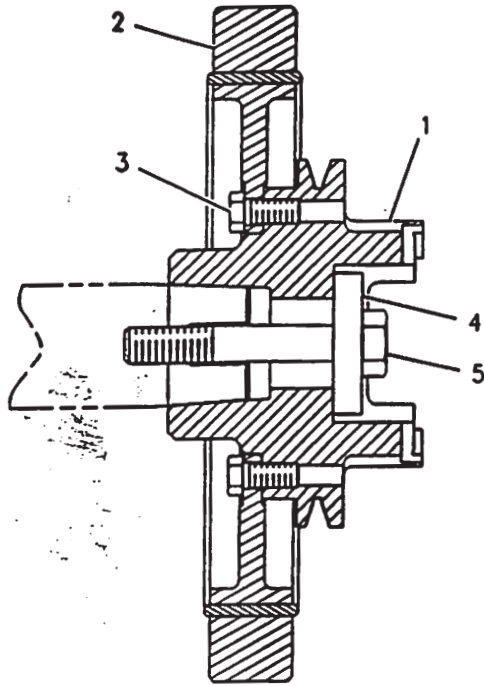
VIEW C-C



VIEW OF AREA B

F-598325 CP

BASIC ENGINE



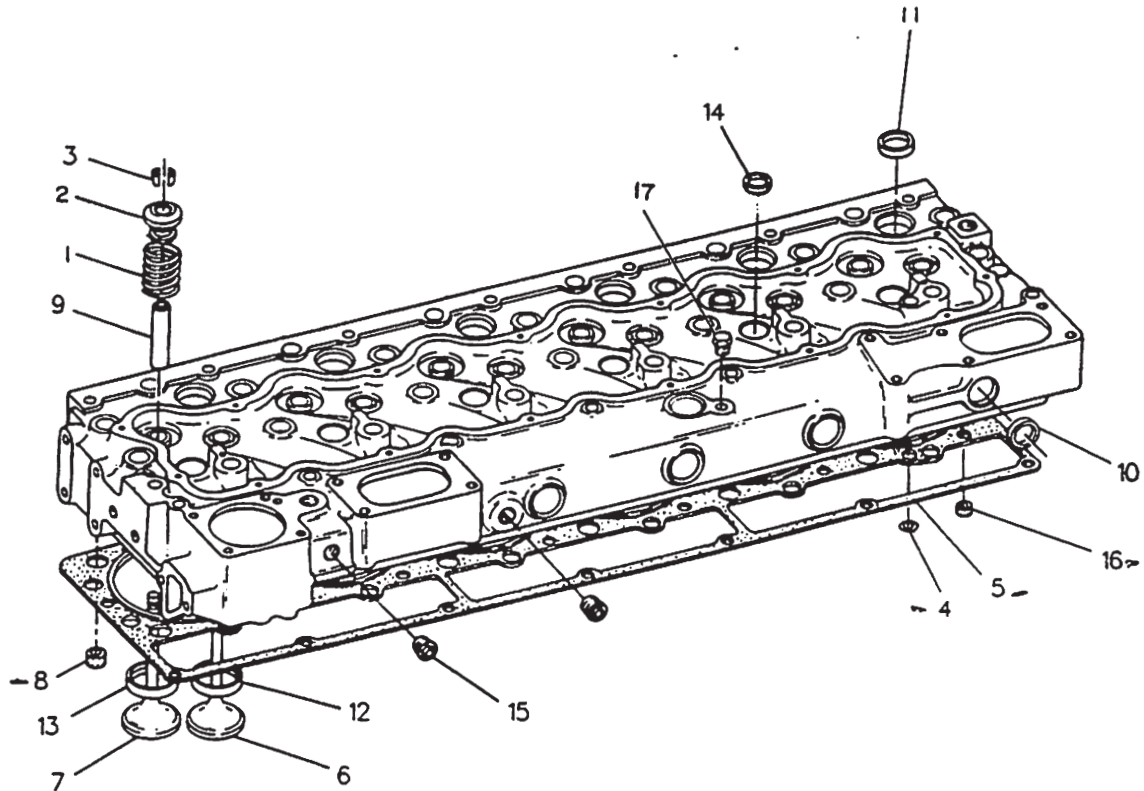
NOTE	REF NO	PART NUMBER	QTY	PART NAME
	1	7C9997	1	HUB-CRANKSHAFT
	2	7N9312	1	DAMPER AS-CRANKSHAFT
	3	6H1717	6	BOLT
	4	5S9948	1	WASHER-PULLEY
	5	7B5163	1	BOLT

F-571168

1205

7E6200 DAMPER GP

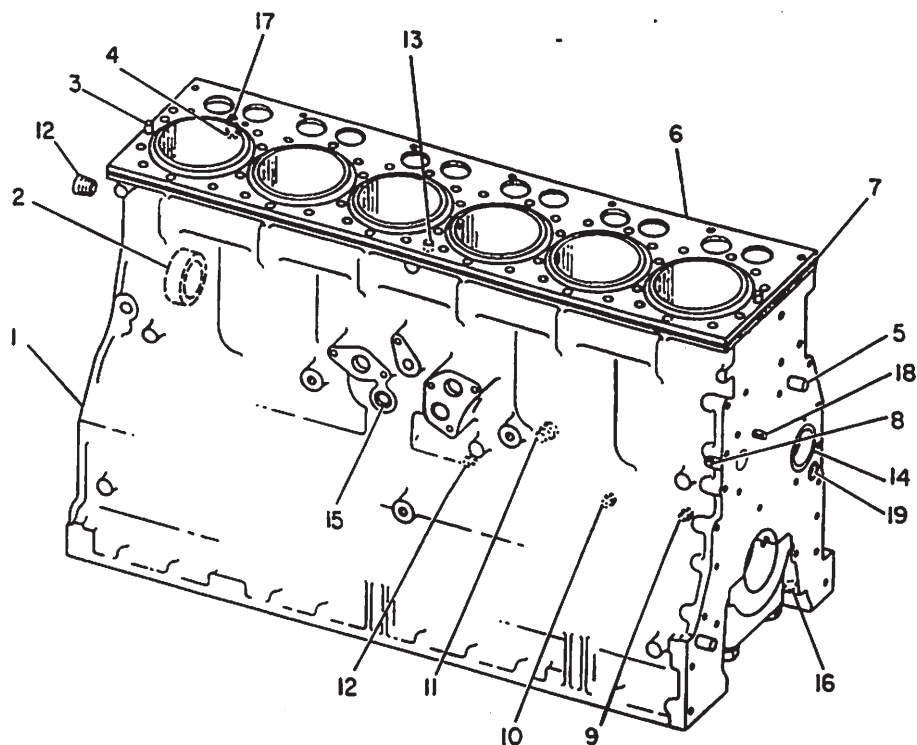
BASIC ENGINE



NOTE	REF NO	PART NUMBER	QTY	PART NAME	NOTE	REF NO	PART NUMBER	QTY	PART NAME
	1	757144	12	SPRING-VALVE					
	2	1W5300	12	ROTOCOIL AS (EACH INCLUDES)					
		6N7174	1	SHIELD-OIL					
	3	2A4429	24	LOCK-RETAINER					
	4	3S5496	1	SEAL-O-RING					
	5	1118015	1	GASKET AS-CYLINDER HEAD					
	6	1007860	6	VALVE-INLET					
	7	1007861	6	VALVE					
	8	9Y1798	18	SEAL-WATER					
	9	1167553	12	GUIDE-VALVE					
	10	3S8313	7	PLUG-CUP					
	11	3P1896	13	PLUG-CUP					
	12	7N4448	6	INSERT					
	13	2W4837	6	INSERT					
	14	3B0623	6	PLUG-CUP					
	15	8T6762	3	PLUG-PIPE (9.52 CF SO HOLE)					
	16	7N8018	6	SEAL-WATER					
	17	8T6763	1	PLUG					

R-699533 CP

BASIC ENGINE

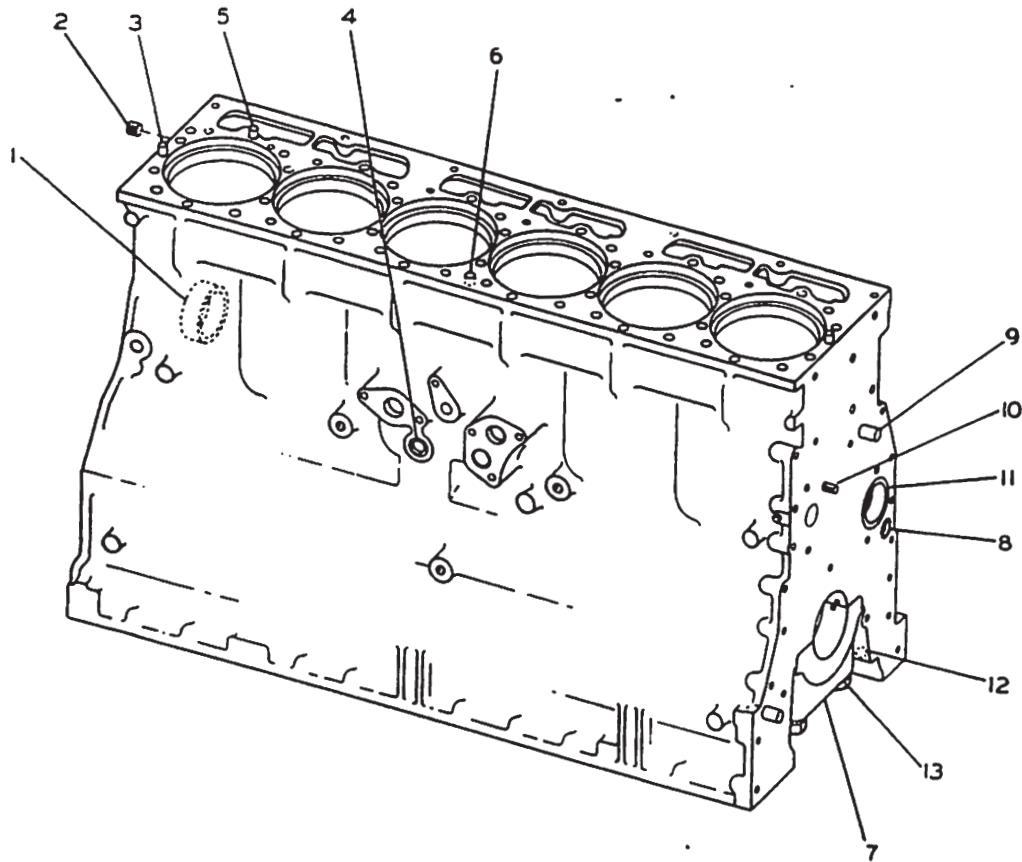


NOTE	REF NO	PART NUMBER	QTY	PART NAME	NOTE	REF NO	PART NUMBER	QTY	PART NAME
CY	1	7N6550	1	CYLINDER BLOCK AS					
	2	7M4046	4	BEARING-SLEEVE					
	3	8K1207	2	DOWEL					
	4	3S5496	1	SEAL-O-RING					
	5	8B6349	2	DOWEL					
	6	7N7998	1	PLATE-BLOCK					
C	7	11S7550	1	GASKET-PLATE					
	8	8T6764	1	PLUG-PIPE					
	9	8T6763	1	PLUG					
	10	8T6765	4	PLUG-PIPE					
	11	8M9307	1	PLUG-DRAIN					
	12	6F7062	1	WASHER					
C	13	8T6762	3	PLUG-PIPE					
	14	5B7652	2	DOWEL					
	15	8N4110	1	BEARING-SLEEVE					
	16	4B5387	1	PLUG-CUP					
	17	4B9782	1	BALL					
	18	1S9540	1	DOWEL					
C	19	5S8462	1	STUD					
		4B3938	1	PLUG-CUP					

C-CHANGE FROM PREVIOUS TYPE
Y-SEPARATE ILLUSTRATION

B-683372 P

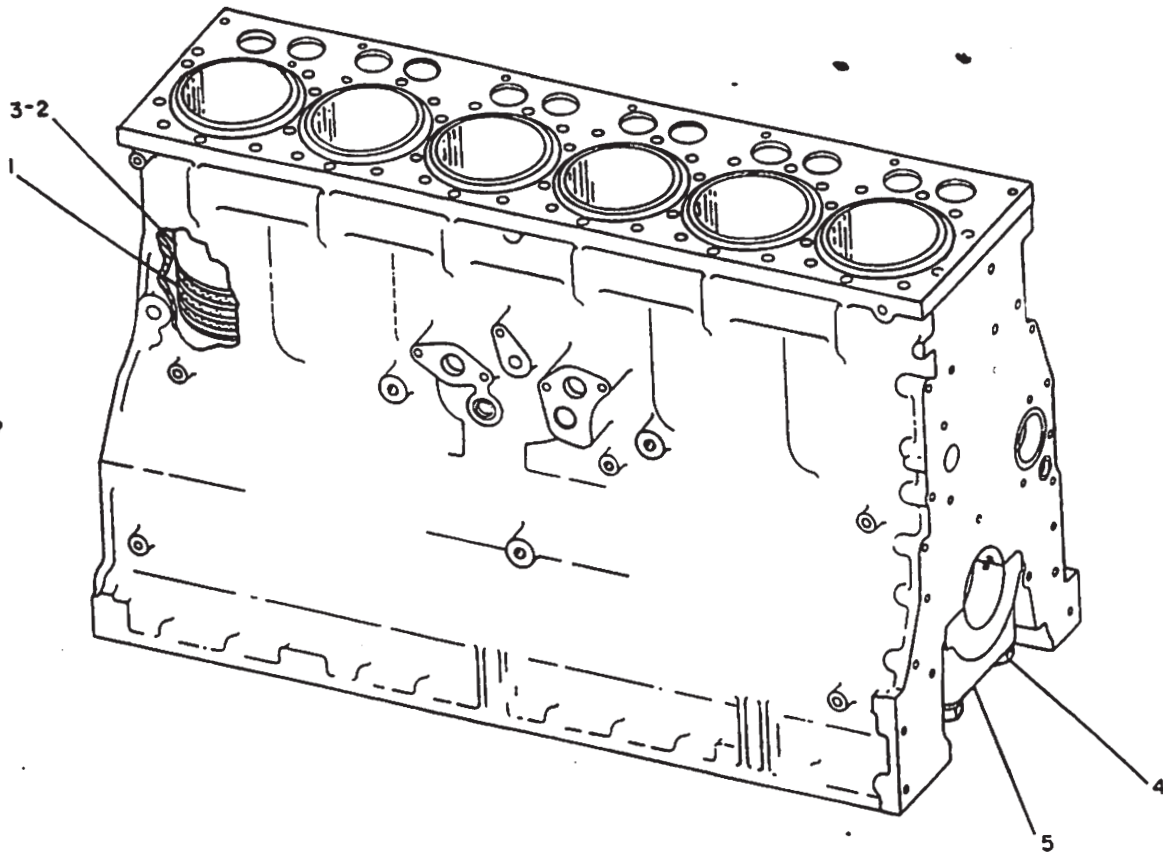
BASIC ENGINE



NOTE	REF NO	PART NUMBER	QTY	PART NAME	NOTE	REF NO	PART NUMBER	QTY	PART NAME
	1	7M4046	4	BEARING-SLEEVE					
	2	3J6019	1	PLUG					
	3	8K1207	2	DOWEL					
	4	4B5387	1	PLUG-CUP					
	5	1S9540	1	DOWEL					
	6	5B7652	2	DOWEL					
	7	6N8003	7	CAP-CRANKSHAFT BEARING					
	8	4B3938	1	PLUG-CUP					
	9	8B6349	2	DOWEL					
	10	5S8462	1	STUD					
	11	8N4110	1	BEARING-SLEEVE					
	12	4B9782	1	BALL					
	13	7S3224	14	BOLT					
		2S5658	14	WASHER-HARD					

B-484537 EP

BASIC ENGINE



NOTE	REF NO	PART NUMBER	QTY	PART NAME	NOTE	REF NO	PART NUMBER	QTY	PART NAME
	1	5S6670	18	SEAL-O-RING					
	2	1105800	6	LINER-CYLINDER					
AJ		1045512	6	INSERT-LINER SEAT (.822MM THK)					
AJ		1045518	6	INSERT-LINER SEAT (1.605MM THK)					
AJ		1045527	6	INSERT-LINER SEAT (2.710MM THK)					
AJ		1045530	6	INSERT-LINER SEAT (5.210MM THK)					
C	3	2W6134	6	BAND-FILLER					
	4	7S3224	14	BOLT					
		2S5658	14	WASHER-HARD					
M	5	6N8003	7	CAP-CRANKSHAFT BEARING					
				J - FOR USE WITH CYLINDER BLOCKS WITH LIGHT DAMAGE DUE TO EROSION/FRETTING IN THE LINER FLANGE SEATING AREA					

A-NOT PART OF THIS GROUP
C-CHANGE FROM PREVIOUS TYPE
M-METRIC PART

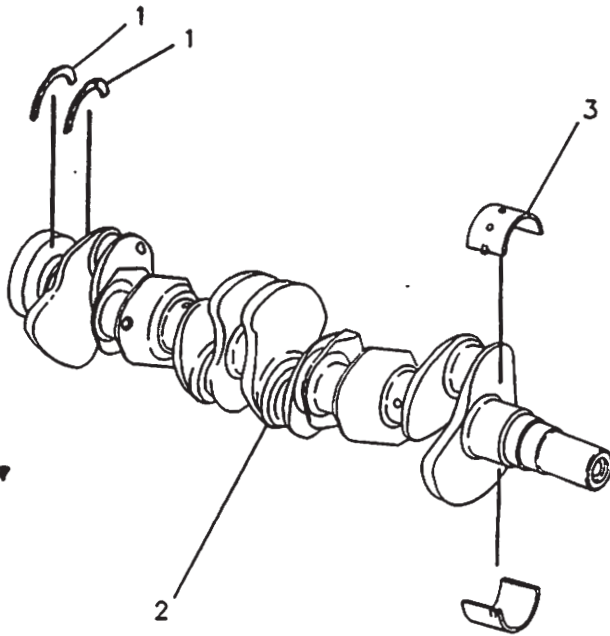
B-682276 P

1201

7N6550 CYLINDER BLOCK AS

Field Replacement Order 1N3576-Page 15 & 6N7727 Cylinder Block Kit
Part Of 8N5286 Cylinder Block

BASIC ENGINE



NOTE	REF NO	PART NUMBER	QTY	PART NAME
	1	1003652	2	PLATE-THRUST
	2	4P9857	1	CRANKSHAFT AS
		4P7827	1	GEAR-CRANKSHAFT (33 TEETH)
		5H2671	1	KEY-WOODRUFF
		9F2247	6	PLUG-PIPE
	3	4W5738	7	BEARING-MAIN (STANDARD)
AJ		8N8225	7	BEARING-MAIN (.25MM US)
AJ		8N8226	7	BEARING-MAIN (.51MM US)
AJ		8N8227	7	BEARING-MAIN (.76MM US)
AJ		8N8228	7	BEARING-MAIN (.51MM OS)
AJ		8N8229	7	BEARING-MAIN (.25MM US/.51MM OS)
AJ		4P7305	7	BEARING-MAIN (.51MM US/.51MM OS)
AJ		4P7306	7	BEARING-MAIN (.76MM US/.51MM OS)

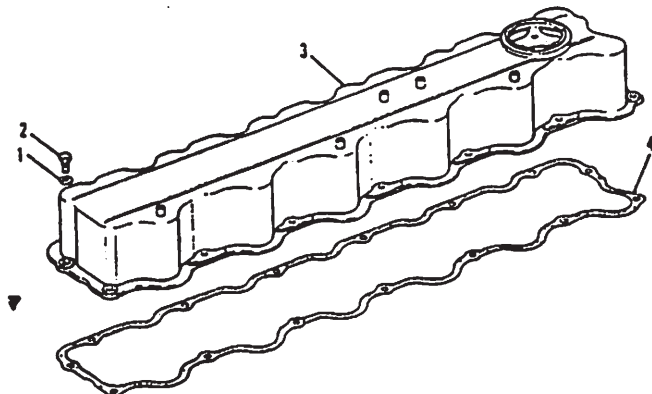
A-NOT PART OF THIS GROUP

F-571337 EP

1202

4P9856 CRANKSHAFT GP

BASIC ENGINE

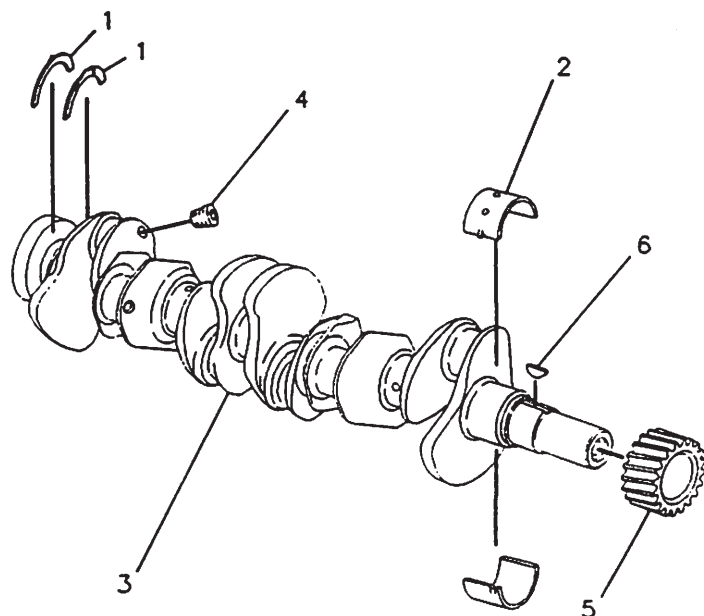


NOTE	REF NO	PART NUMBER	QTY	PART NAME
	1	9M1974	15	WASHER-HARD
	2	OS1617	15	BOLT
	3	2W1086	1	COVER AS-CYLINDER HEAD
	4	8S1605	1	GASKET-COVER

405099 EP

1107

8N4745 COVER GP-VALVE MECHANISM



NOTE	REF NO	PART NUMBER	QTY	PART NAME
	1	1003652	2	PLATE-THRUST
	2	4W5738	7	BEARING-MAIN
AB		8N8225	7	BEARING-MAIN (.25MM US)
AB		8N8226	7	BEARING-MAIN (.51MM US)
AB		8N8227	7	BEARING-MAIN (.76MM US)
AB		8N8228	7	BEARING-MAIN (.51MM OS)
AB		8N8229	7	BEARING-MAIN (.25MM US/.51MM OS)
AB		4P7305	7	BEARING-MAIN (.51MM US/.51MM OS)
AB		4P7306	7	BEARING-MAIN (.76MM US/.51MM OS)
C	3	5Y1546	1	CRANKSHAFT AS
	4	9F2247	6	PLUG-PIPE
C	5	1W4405	1	GEAR-CRANKSHAFT (40 TEETH)
C	6	5H2671	1	KEY-WOODRUFF

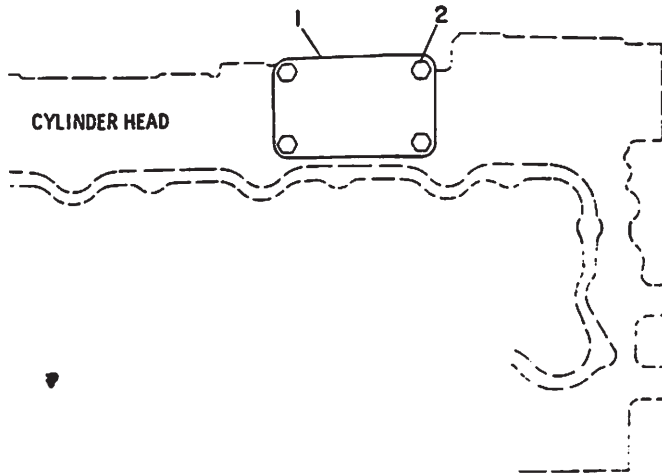
A-NOT PART OF THIS GROUP
B-USE AS REQUIRED
C-CHANGE FROM PREVIOUS TYPE

F-618047 CP

1202

2Y5206 CRANKSHAFT GP

BASIC ENGINE

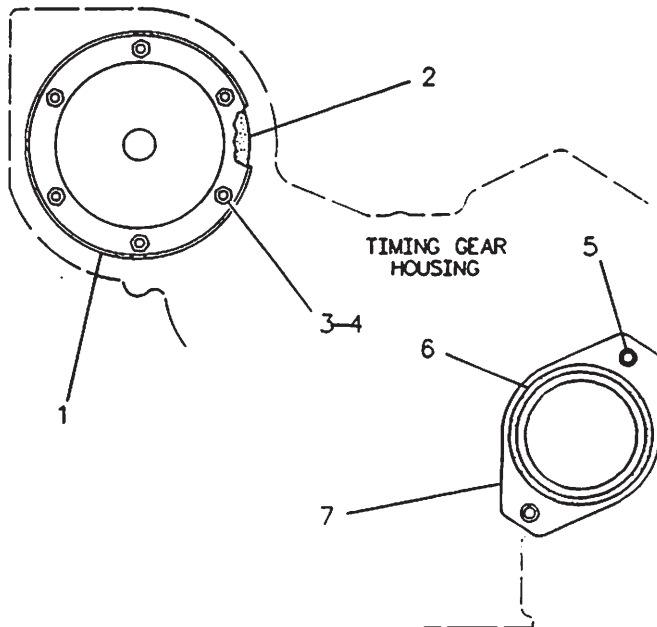


NOTE	REF NO	PART NUMBER	QTY	PART NAME
B B	1	1P6367	1	COVER
		5S6735	1	GASKET
	2	2P3201	4	BOLT-WASHER HEAD
				-OR-
		OS1594	4	BOLT (25.4MM LG)
		5M2894	4	WASHER
B-USE AS REQUIRED				

B-3484

1101

2P6530 COVER GP-CYLINDER HEAD



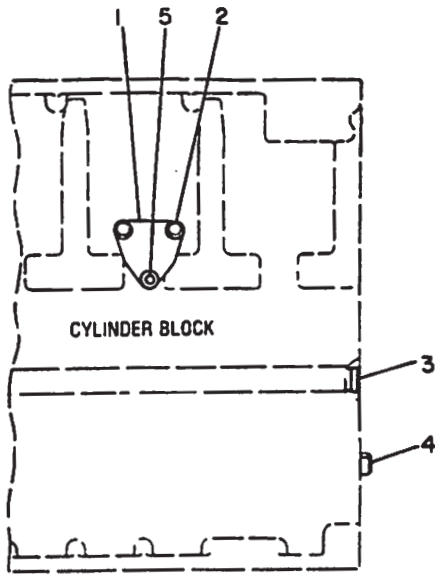
NOTE	REF NO	PART NUMBER	QTY	PART NAME
	1	9N5769	1	COVER-HOUSING
	2	6N7887	1	GASKET-HOUSING COVER
	3	3S2713	6	NUT-FULL
	4	5M2894	6	WASHER
	5	OS1589	2	BOLT
	6	5F3106	1	SEAL-O-RING
	7	6N0462	1	COVER

R-50003

1166

2P6529 COVER GP-FRONT HOUSING

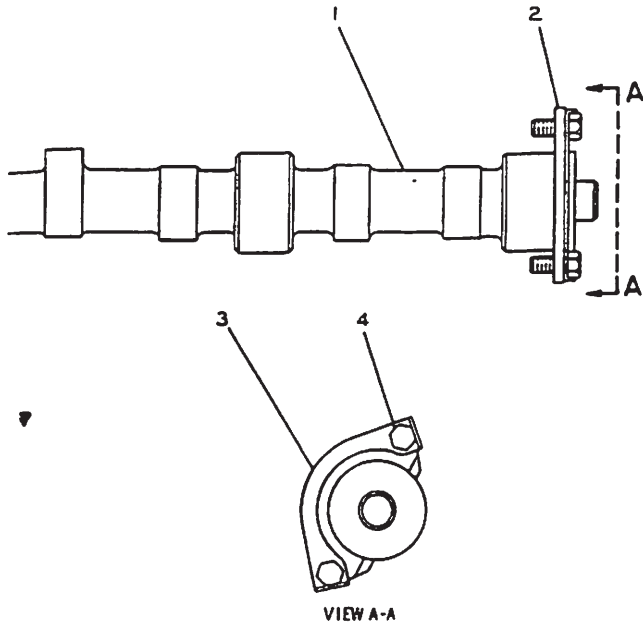
BASIC ENGINE



NOTE	REF NO	PART NUMBER	QTY	PART NAME
	1	8L8662	1	COVER
		5S8055	1	GASKET
	2	OL1351	2	BOLT
		5M2894	2	WASHER
	3	4B3938	1	PLUG-CUP
	4	2A3798	2	DOWEL
	5	8M3267	1	SCREW-HEX SOCKET

B-222880 EP

BASIC ENGINE



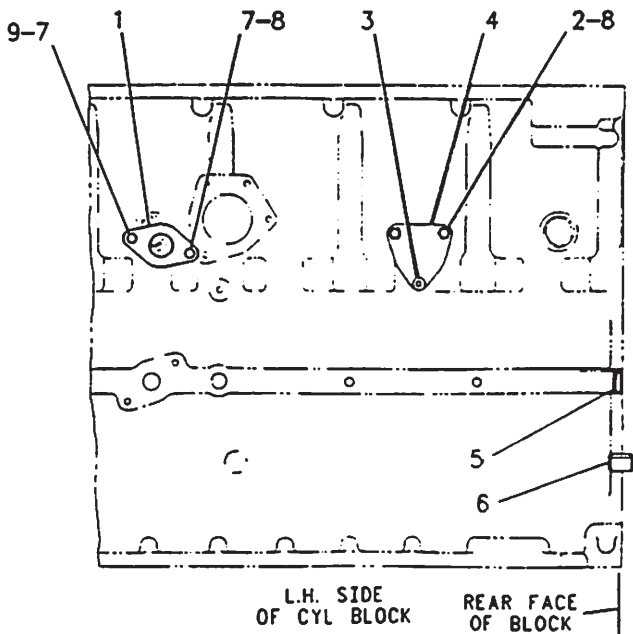
NOTE	REF NO	PART NUMBER	QTY	PART NAME
R	1	4P2942	1	CAMSHAFT AS
	2	7S2204	1	WASHER-THRUST
	3	8S1491	1	LOCK
	4	OS0509	2	BOLT

R-REMFG PART MAY BE AVAILABLE

B-556765 EP

1210

1N4406 CAMSHAFT GP



NOTE	REF NO	PART NUMBER	QTY	PART NAME
B	1	1M0130	1	COVER
	2	4M6480	1	GASKET
	3	OL1351	2	BOLT
	4	8M3267	1	SCREW-HEX SOCKET
	5	5S8055	1	GASKET
	6	8L8662	1	COVER
	7	4B3938	1	PLUG-CUP
	8	2A3798	2	DOWEL
	9	OS1594	2	BOLT
B	10	5M2894	3	WASHER
	11	5M2894	1	WASHER

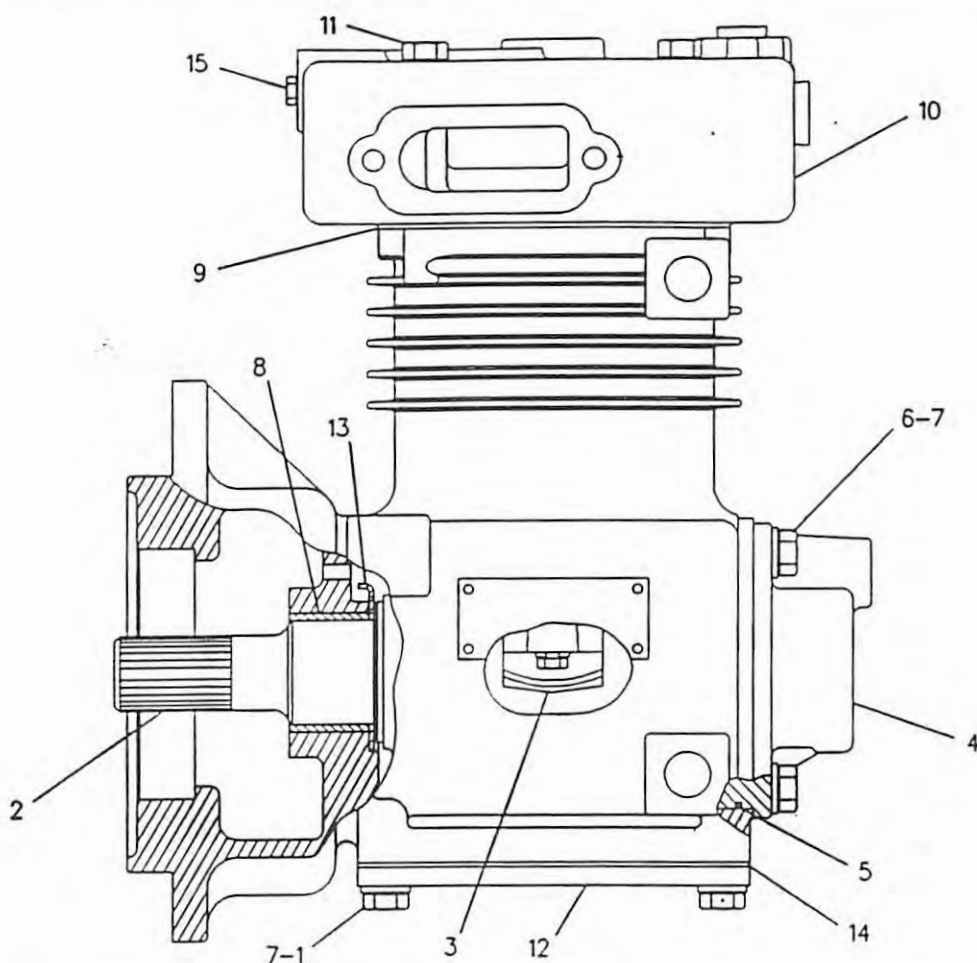
B-USE AS REQUIRED

R-583465 EP

1201

2Y1958 COVER GP-CYLINDER BLOCK

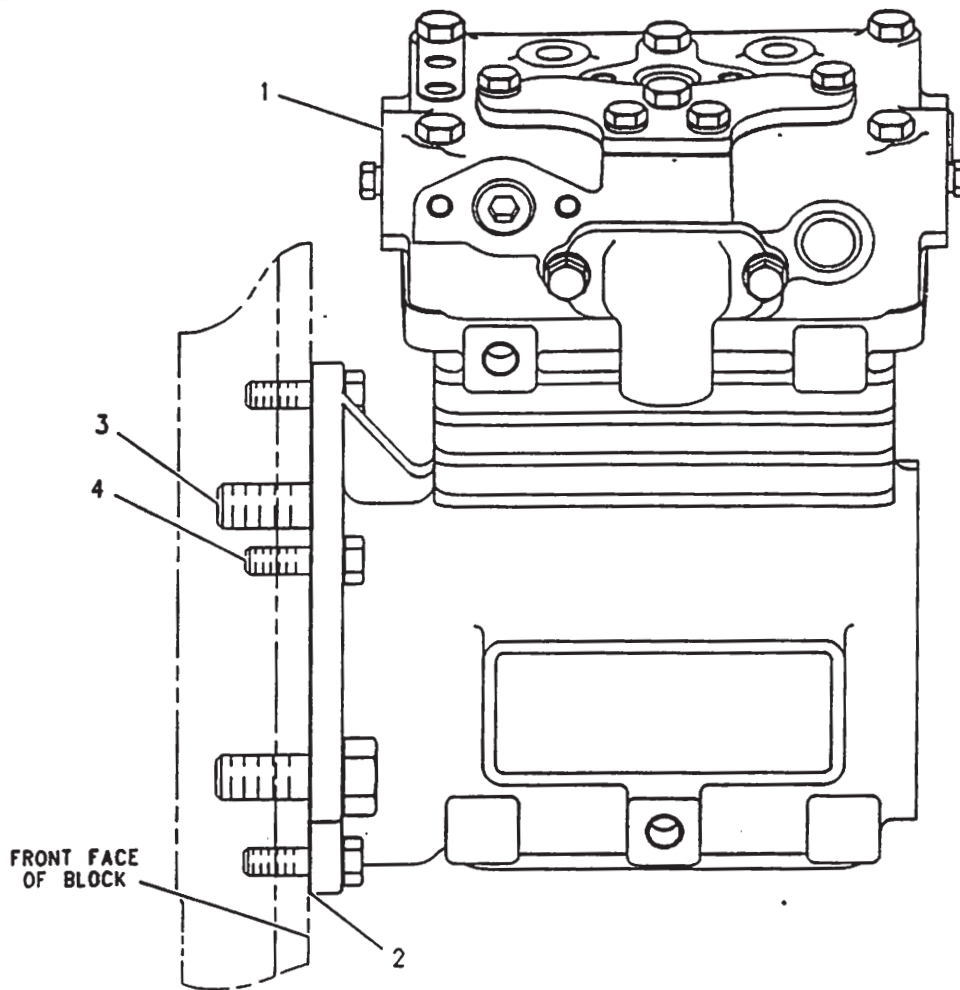
BASIC ENGINE



NOTE	REF NO	PART NUMBER	QTY	PART NAME	NOTE	REF NO	PART NUMBER	QTY	PART NAME
	1	OS1617	4	BOLT					
	2	7C0562	1	CRANKSHAFT-AIR COMPRESSOR					
	3	7C0563	1	PISTON & ROD AS			7C0570	1	THE FOLLOWING REPAIR KITS ARE AVAILABLE:
	4	7C0564	1	COVER AS-END					1 KIT-PISTON RING
	5	7C0565	1	SEAL-END COVER					1 KIT-PISTON RINGS (INCL RINGS)
	6	2B2695	4	BOLT			1070260	1	1 KIT-MAJOR REPAIR
	7	3B4505	8	LOCKWASHER					1 KIT-MAJOR REPAIR (INCL PISTON AS, STOP AS, SPRINGS, GASKETS, VALVES, SEATS, STOP, WASHERS)
	8	7C0566	2	BEARING					
	9	7C0577	1	GASKET-CYLINDER HEAD					
	10	1082522	1	CYLINDER HEAD AS					
	11	1D4540	4	BOLT					
	12	6I2124	1	COVER-BOTTOM					
	13	9L1518	2	WASHER-THRUST					
	14	6I2123	1	GASKET					
	15	8T6764	1	PLUG-PIPE					

F-599497

BASIC ENGINE



NOTE	REF NO	PART NUMBER	QTY	PART NAME	NOTE	REF NO	PART NUMBER	QTY	PART NAME
Y	1	1091317	1	AIR COMPRESSOR GP					
	2	2P0220	1	GASKET-PUMP					
	3	0S1589	2	BOLT					
	4	3B1915	3	BOLT					

Y-SEPARATE ILLUSTRATION

F-5845:3 EP

BASIC ENGINE

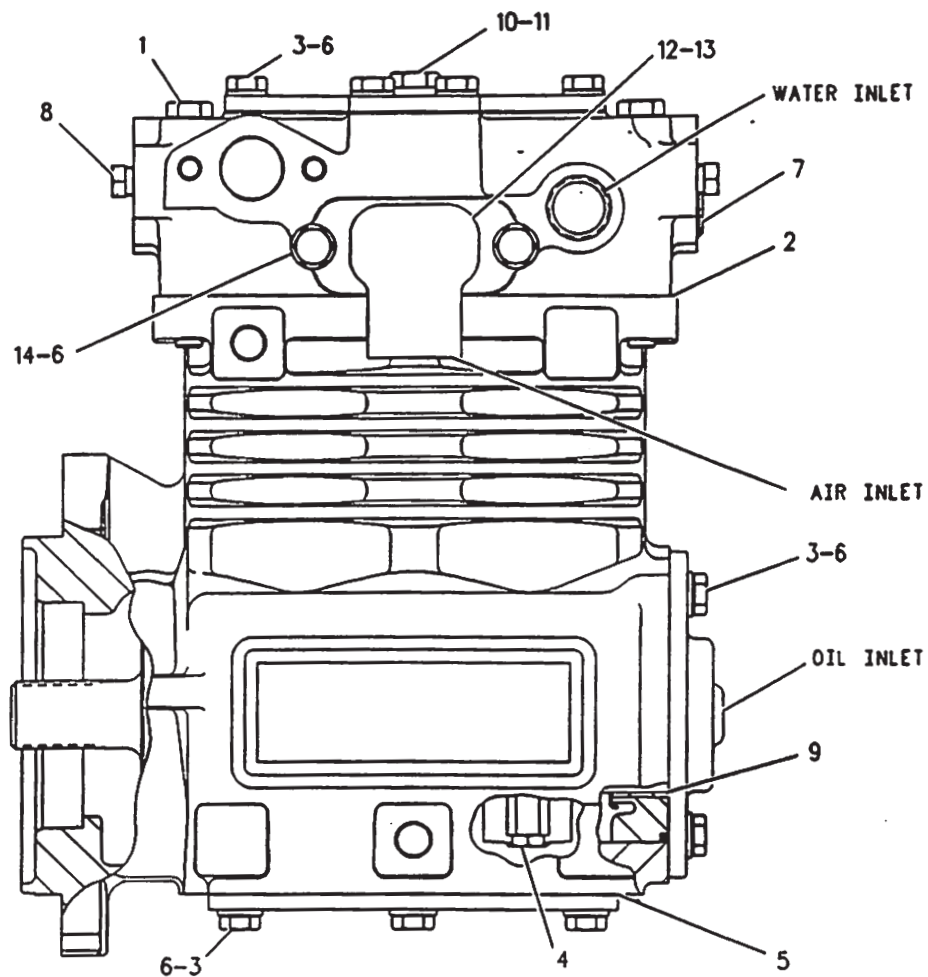
NO SERVICEABLE PARTS

664486 P

1101

1105764 AIR COMPRESSOR GP*R
Field Replacement For 1091317-Page 9.01

BASIC ENGINE



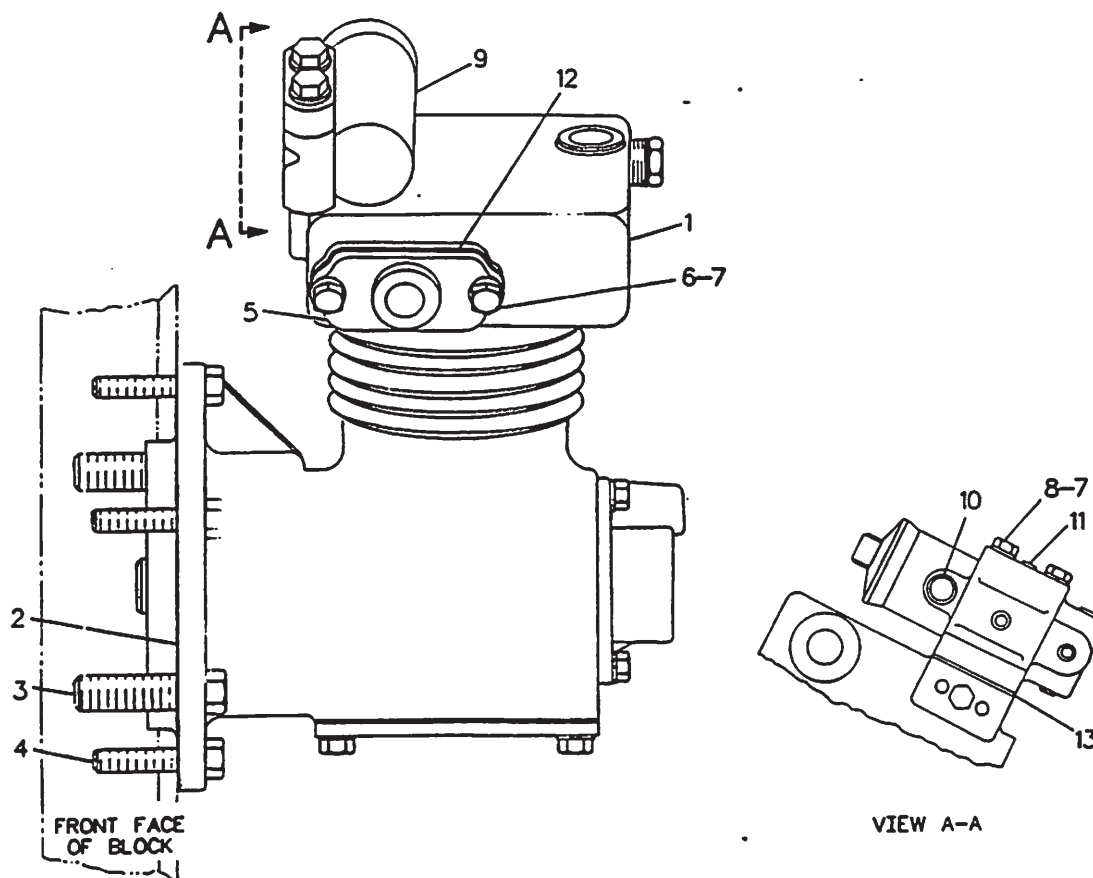
NOTE	REF NO	PART NUMBER	QTY	PART NAME	NOTE	REF NO	PART NUMBER	QTY	PART NAME
	1	OL1352	5	BOLT					
	2	4P3977	1	GASKET-CYLINDER HEAD					
	3	OS1617	14	BOLT					
	4	4P3966	2	PISTON & ROD AS					
	5	7E8928	1	GASKET-BASE					
	6	9M1974	16	WASHER-HARD					
	7	6V0387	1	PLUG-PIPE					
	8	8T6764	2	PLUG-PIPE					
	9	7C6178	2	BEARING-REAR					
	10	OT0065	1	BOLT					
	11	5M2894	1	WASHER					
	12	7W5499	1	ELBOW					
	13	8M7065	1	GASKET-AIR INLET					
	14	2B2695	2	BOLT					
				SERVICE REPAIR KITS AVAILABLE:					
		7E8923	1	KIT-CRANKSHAFT BEARING					
		7E8925	1	KIT-STANDARD RING					
		7E8926	1	KIT-CYLINDER HEAD					

F - 700268

1803

1091317 AIR COMPRESSOR GP
Part Of 1105765 Air Compressor
Field Replacement Order 1105764-Page 9.02

BASIC ENGINE



NOTE	REF NO	PART NUMBER	QTY	PART NAME	NOTE	REF NO	PART NUMBER	QTY	PART NAME
RCY	1	1117994	1	AIR COMPRESSOR GP					
	2	2P0220	1	GASKET-PUMP					
	3	OS1589	2	BOLT					
	4	3B1915	3	BOLT					
	5	9M0397	1	ADAPTER-INLET					
	6	2B2695	2	BOLT					
	7	9M1974	4	WASHER-HARD					
	8	1D4540	2	BOLT					
	9	6I1240	1	GOVERNOR AS					
		2S2923	1	COVER-GOVERNOR					
	10	5F5434	1	VENT AS					
	11	8T6757	4	PLUG-PIPE					
	12	8M7065	1	GASKET-AIR INLET					
J	13	6L1883	1	GASKET-GOVERNOR					
		9M0402	1	THE FOLLOWING REPAIR KIT IS AVAILABLE: KIT-GOVERNOR OVERHAUL (INCL GROMMETS, FILTERS, SPRING, VALVE, COVER RING & GASKET)					

C-CHANGE FROM PREVIOUS TYPE
R-REMFG PART MAY BE AVAILABLE
Y-SEPARATE ILLUSTRATION

R- 647496 P

1803

7W8399 AIR COMPRESSOR GP

S/N 8MN1-459

1117994-Page 10

Part Of 1162891 Installation Ar-Engine